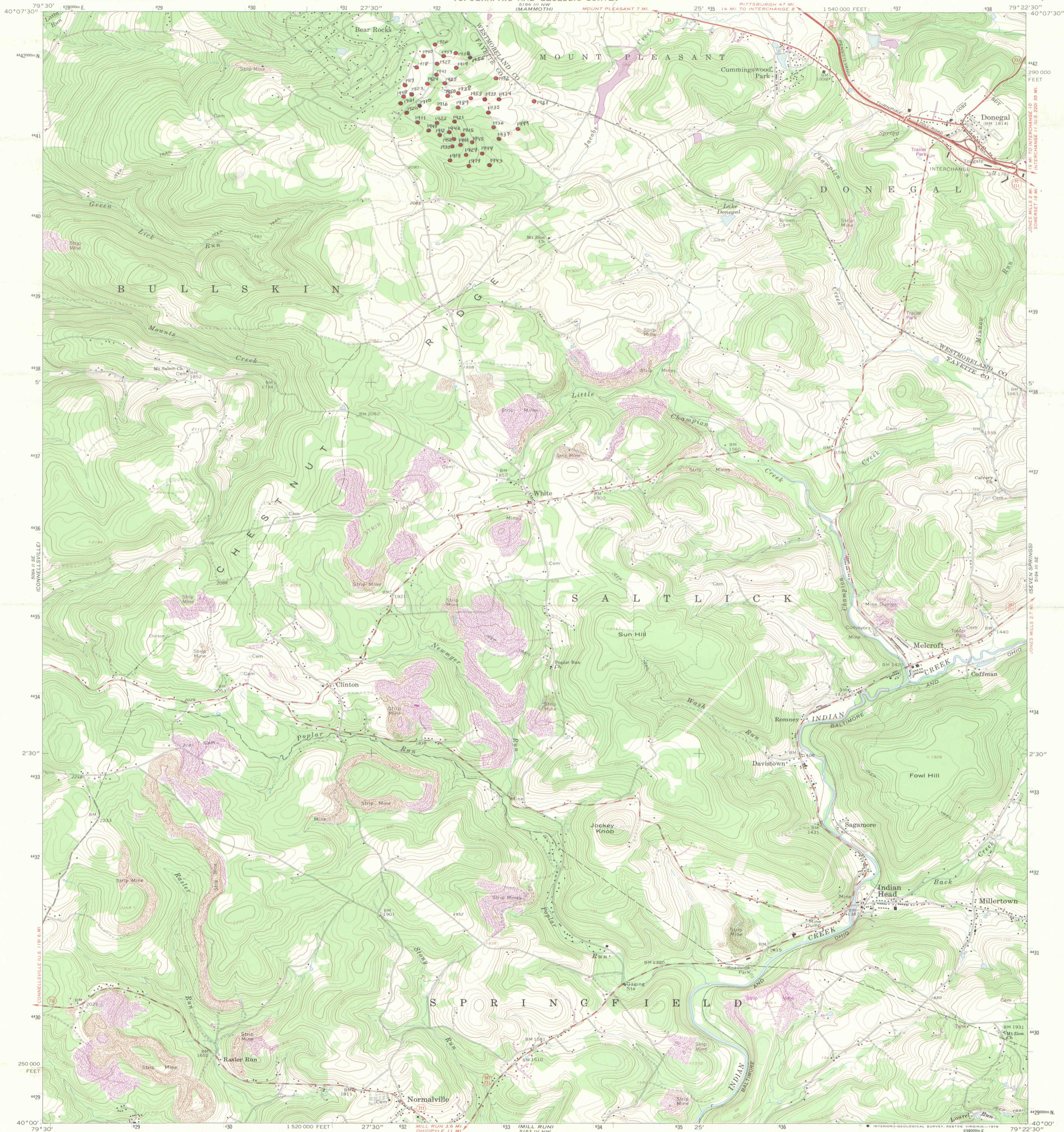


UNITED STATES  
DEPARTMENT OF THE INTERIOR  
GEOLOGICAL SURVEY

COMMONWEALTH OF PENNSYLVANIA  
DEPARTMENT OF ENVIRONMENTAL RESOURCES  
TOPOGRAPHIC AND GEOLOGIC SURVEY

DONEGAL QUADRANGLE  
PENNSYLVANIA  
7.5 MINUTE SERIES (TOPOGRAPHIC)



Mapped, edited, and published by the Geological Survey  
Control by USGS and USC&GS  
Topography by photogrammetric methods from aerial  
photographs taken 1967. Field checked 1967  
Polyconic projection. 1927 North American datum  
10,000-foot grid based on Pennsylvania coordinate system, south zone  
1000-meter Universal Transverse Mercator grid ticks,  
zone 17, shown in blue  
To place on the predicted North American Datum 1983  
move the projection lines 5 meters south and  
19 meters west as shown by dashed corner ticks  
Fine red dashed lines indicate selected fence and field lines where  
generally visible on aerial photographs. This information is unchecked  
Revisions shown in purple compiled in cooperation with State of  
Pennsylvania agencies from aerial photographs taken 1977 and other  
source data. This information not field checked. Map edited 1979

UTM GRID AND 1979 MAGNETIC NORTH  
DECLINATION AT CENTER OF SHEET

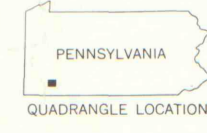
DIAMOND DRILL HOLE  
Location Maps  
A-02

NOT TO BE TAKEN FROM OFFICE

ROAD CLASSIFICATION  
Primary highway, all weather, hard surface  
Secondary highway, all weather, hard surface  
Light-duty road, all weather, improved surface  
Unimproved road, fair or dry-weather  
Interstate Route  
State Route

DONEGAL, PA.  
N4000—W7922.5/7.5

1967  
PHOTOREVISED 1979  
AMS 5164 III SW—SERIES 5831



IMAPS#09327