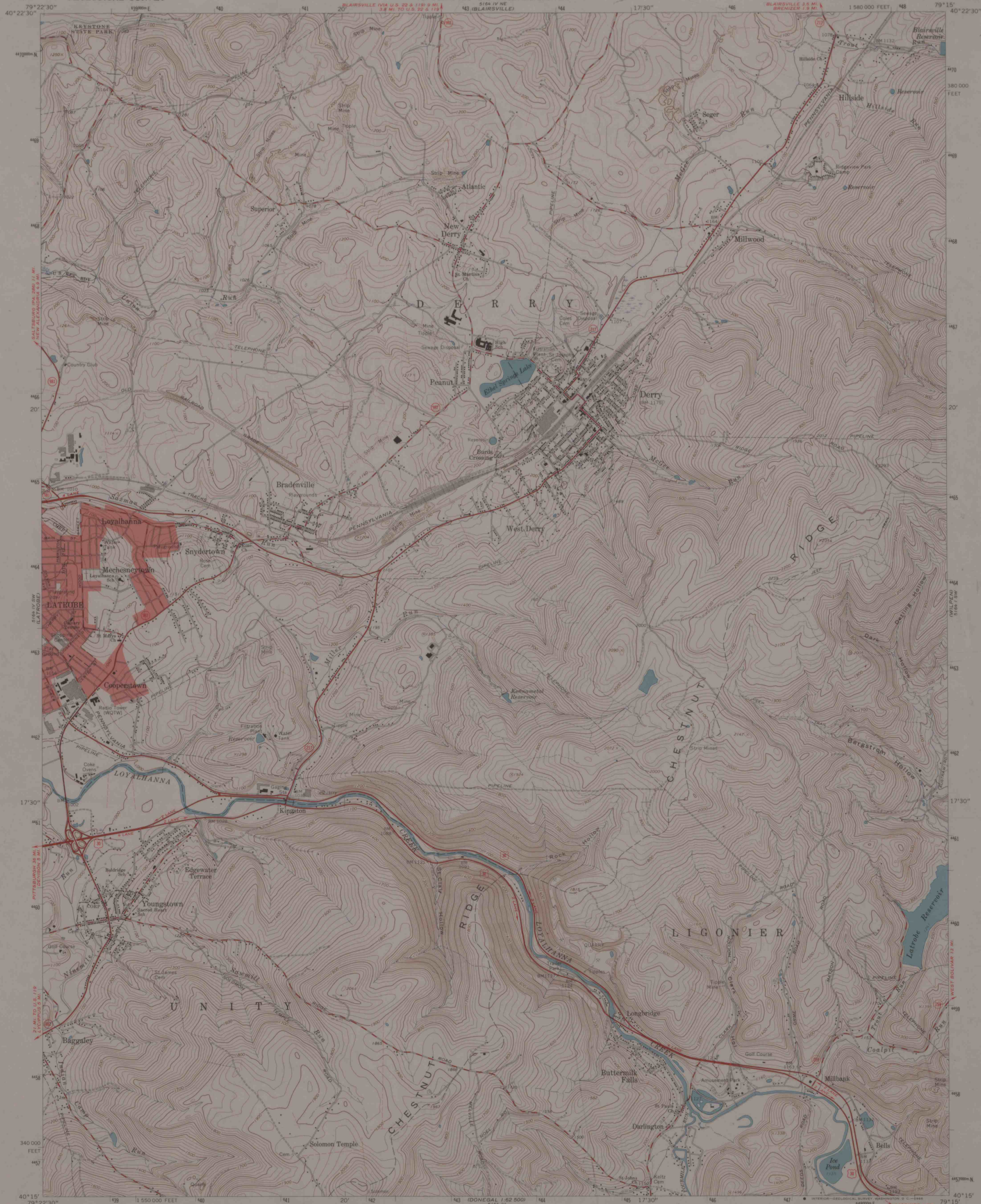


UNITED STATES  
DEPARTMENT OF THE INTERIOR  
GEOLOGICAL SURVEY

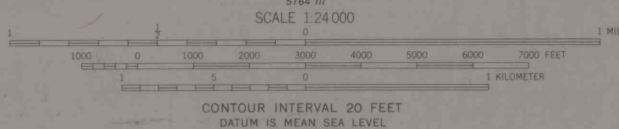
STATE OF PENNSYLVANIA  
DEPARTMENT OF INTERNAL AFFAIRS  
TOPOGRAPHIC AND GEOLOGIC SURVEY

DERRY QUADRANGLE  
PENNSYLVANIA—WESTMORELAND CO.  
7.5 MINUTE SERIES (TOPOGRAPHIC)



Mapped, edited, and published by the Geological Survey  
Control by USGS and USC&GS  
Topography by photogrammetric methods from aerial photographs  
taken 1962. Field checked 1964  
Polyconic projection. 1927 North American datum  
10,000-foot grid based on Pennsylvania coordinate system, south zone  
1000-meter Universal Transverse Mercator grid ticks, zone 17,  
shown in blue  
Fine red dashed lines indicate selected fence and field lines where  
generally visible on aerial photographs. This information is unchecked  
Red tint indicates area in which only landmark buildings are shown  
U. S. Reservation boundary from maps by U. S. Corps of Engineers  
Area covered by dashed light-blue pattern is subject to controlled  
inundation by Loyalhanna Dam

UTM GRID AND 1984 MAGNETIC NORTH  
DECLINATION AT CENTER OF SHEET



THIS MAP COMPLIES WITH NATIONAL MAP ACCURACY STANDARDS  
FOR SALE BY U. S. GEOLOGICAL SURVEY, WASHINGTON, D. C. 20242  
A FOLDER DESCRIBING TOPOGRAPHIC MAPS AND SYMBOLS IS AVAILABLE ON REQUEST

ROAD CLASSIFICATION  
Heavy-duty ——— Light-duty ———  
Medium-duty ——— Unimproved dirt ———  
U. S. Route ——— State Route ———

FILE COPY  
RETURN

DERRY, PA.  
SE/4 LATROBE 15' QUADRANGLE  
N4015—W7915/7.5  
1964  
AMS 5164 IV SE—SERIES V831