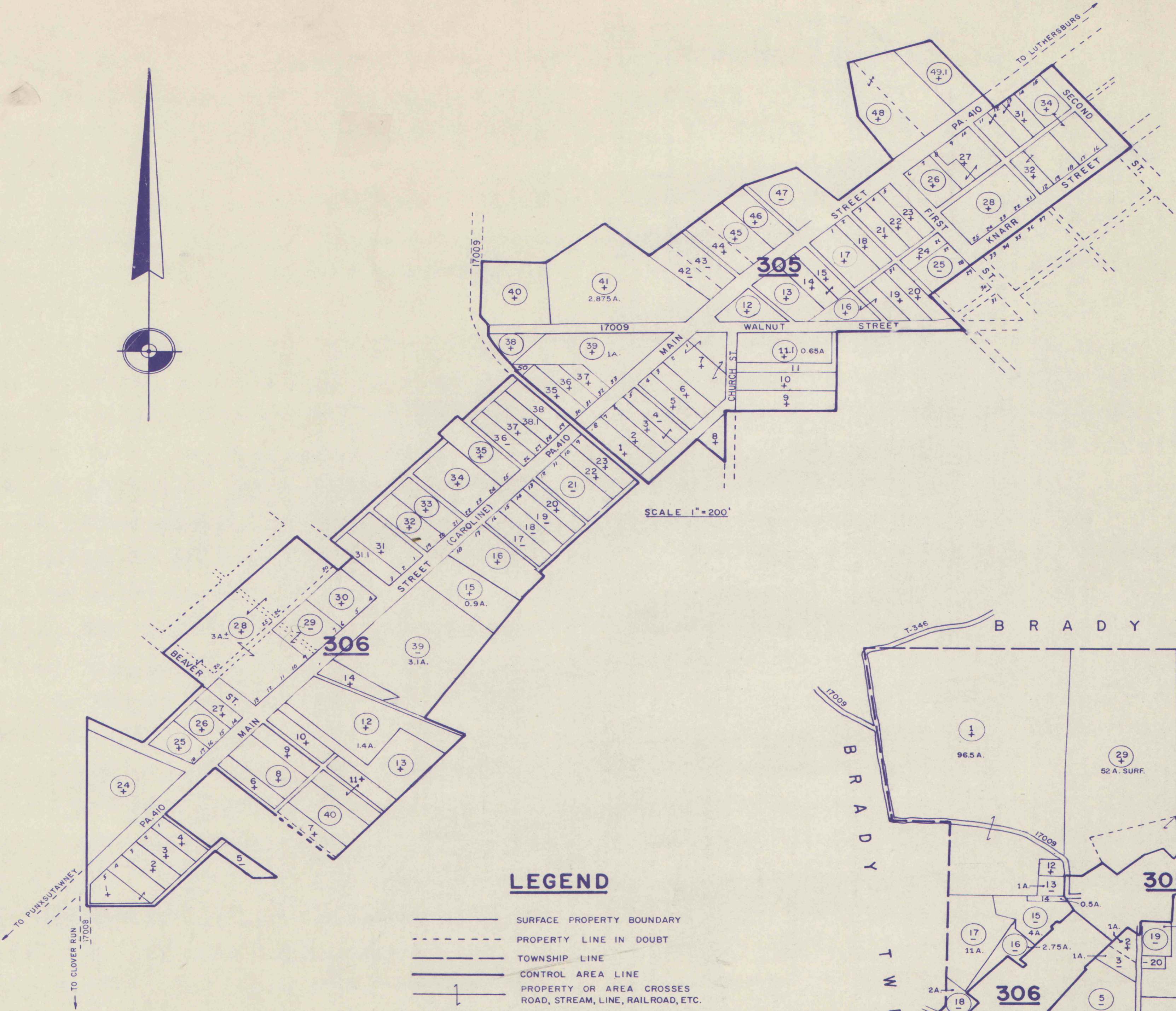


**CLEARFIELD COUNTY**  
SANDY TWP. BRADY TWP. TROUTVILLE  
Rec'd 3-28-75

10143-85

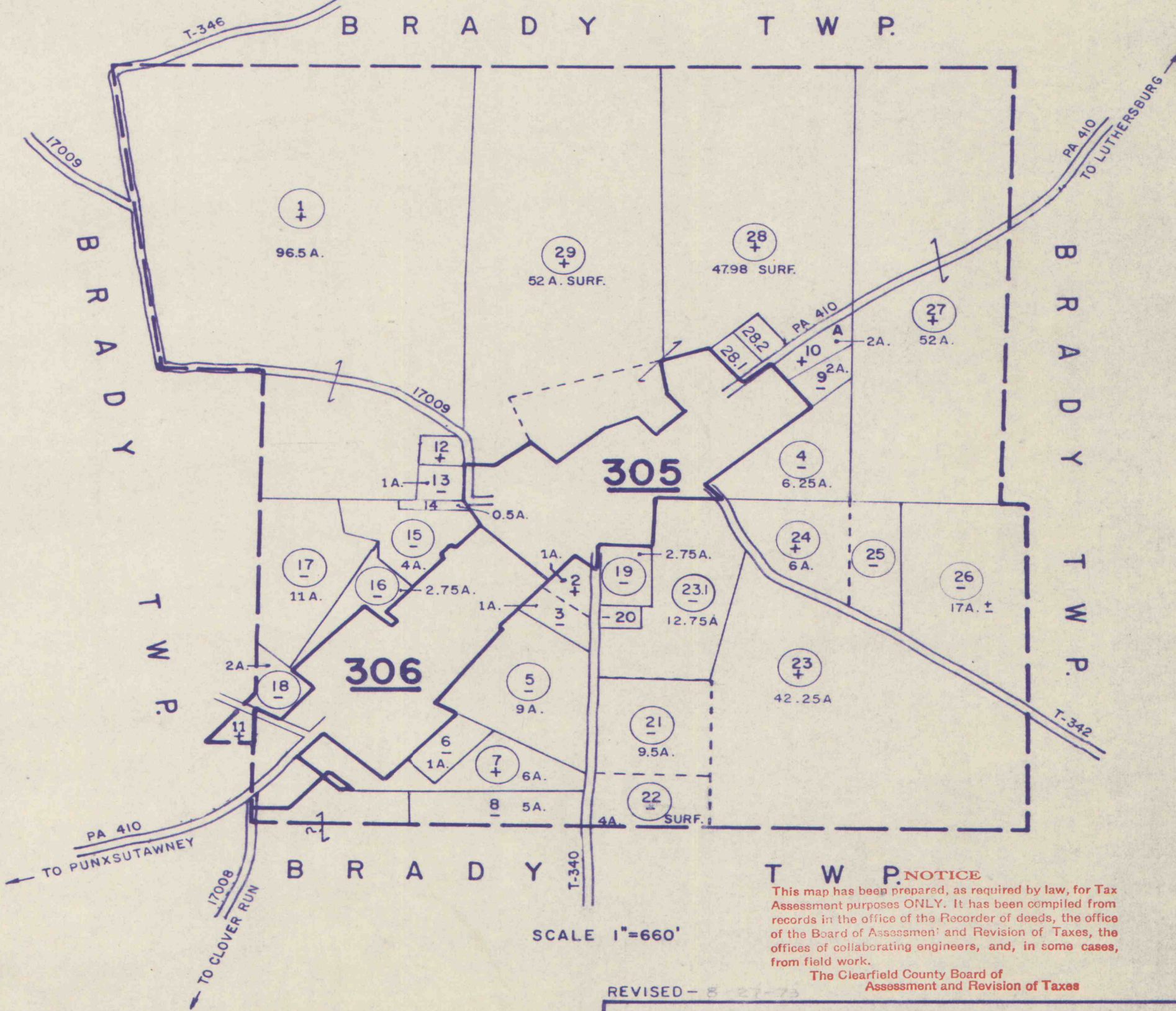
10143

DRAWER - 85



**LEGEND**

- SURFACE PROPERTY BOUNDARY
- PROPERTY LINE IN DOUBT
- TOWNSHIP LINE
- CONTROL AREA LINE
- PROPERTY OR AREA CROSSES ROAD, STREAM, LINE, RAILROAD, ETC.
- 2.2+ SURFACE PROPERTY OWNERSHIP-IMPROVED CIRCLE OMITTED SOMETIMES-LACK OF SPACE
- 22- SURFACE PROPERTY OWNERSHIP-UNIMPROVED
- A, B, C, ETC. LOCATION OF SEPARATELY ASSESSED IMPROVEMENT, SUCH AS HOUSE, COAL TIPPLE, CAMP, SERVICE STATION, SAWMILL, TRAILER, ETC.
- 305 ENLARGED AREA IDENTIFICATION NUMBER
- T-346 TOWNSHIP ROAD
- 17009 LEGISLATIVE RTE. STATE HWY. SYSTEM
- PA 410 STATE HIGHWAY
- U.S.322 UNITED STATES HIGHWAY SYSTEM
- 18 TAX DISTRICT NUMBER
- 1 PAGE NUMBER



NOTICE  
This map has been prepared, as required by law, for Tax Assessment purposes ONLY. It has been compiled from records in the office of the Recorder of Deeds, the office of the Board of Assessment and Revision of Taxes, the offices of collaborating engineers, and, in some cases, from field work.  
The Clearfield County Board of Assessment and Revision of Taxes

ASSESSMENT MAP	
TROUTVILLE BOROUGH	
CLEARFIELD COUNTY	
PENNSYLVANIA	
SCALE 1"=200' & 1"=660' AD-1957	
ENLARGEMENTS NO.	MAP NO.
305, 306	A6

10143-85