

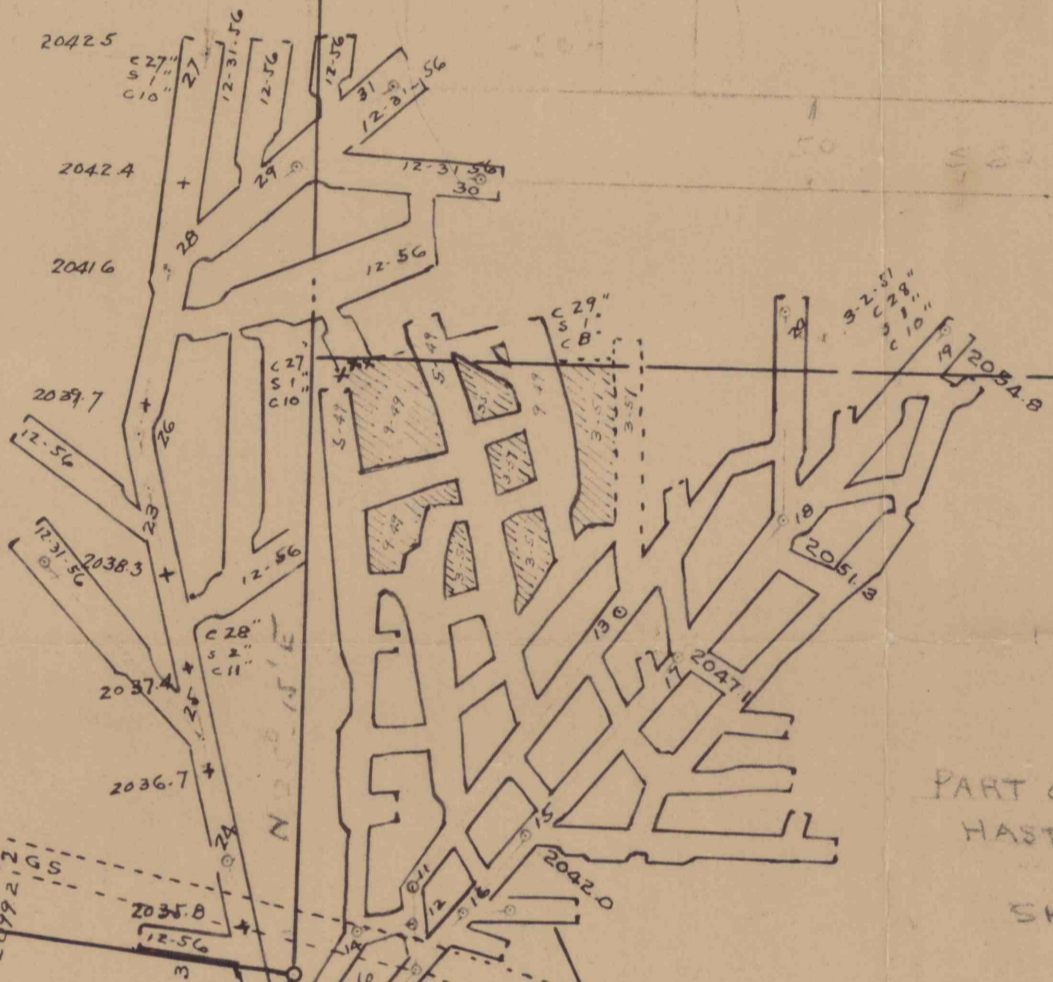
JAMES WESTRICK

557° 30' E

800'

PART OF SWITZLER TR
HASTINGS & SPANGLER EST. LSE
TO
SHEVOCK & SHILLING N.W. 1/4
12 15 A.

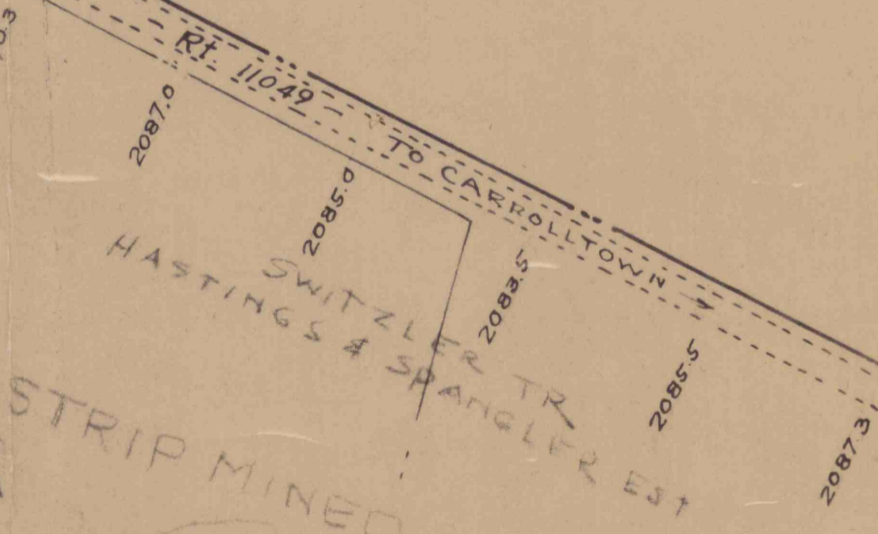
NOW M.C. KIRSCH



PART OF SWITZLER TR
HASTINGS & SPANGLER EST. LSE
TO
SHEVOCK & SHILLING
12 25 A.

NOW OWNED BY
Martin C. Kirsch

NOW M.C. KIRSCH
HASTINGS & SPANGLER EST
SWITZLER TR



"D'E'E"

STRIP MINED BY OTHERS

MAP SHOWING
"E" SEAM MINE
OPERATED BY
HILL TOP COAL CO.

TRC MADE JAN 1957 SCALE 1"=100'
Martin C. Kirsch Reg. Engr
Spangler, Penna.