

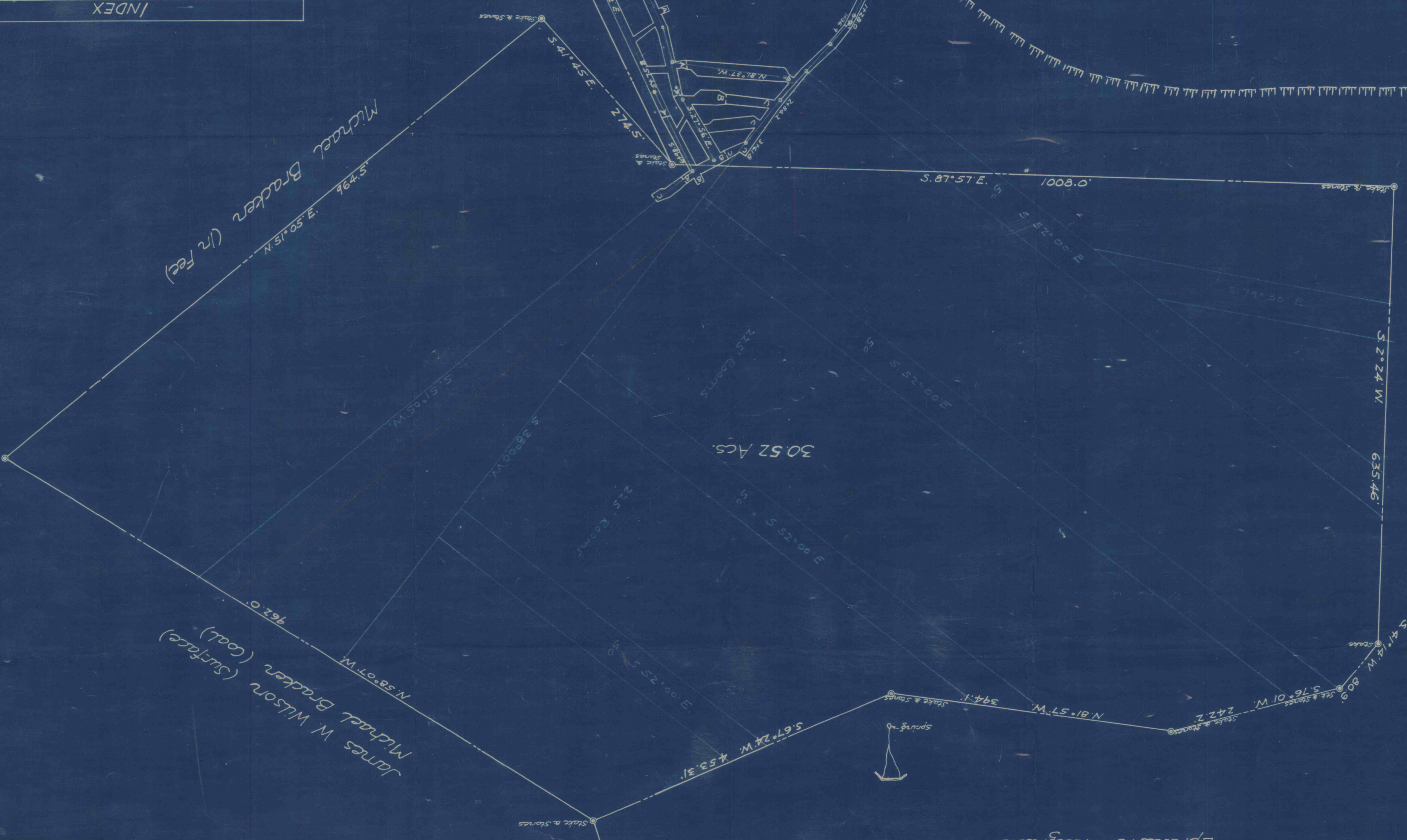
C. Erlime Muring Operations  
situate at  
Mural Point, Cambria County, Penna.  
Scale 1"=100' — S. E. Dickey and Co. — Feb. 18, 1921.  
Civil and Mining Engineers  
Johnstown, Penna.

S. S. Seese  
SHOWING

Part of Mural Pt #4

Letter	Date	Surveyed By	Plotted By
A	Feb. 15, 1921	C. M. Hamner	T. E. West
B	Feb. 2, 1922	E. R. Renschner	T. E. West
C	Apr. 8, 1922	T. E. West	T. E. West

INDEX



Portage Railroad r. of W.

Surface Leased to Samuel Syer

Adam W Ream Warrant No. 1

Line of Strike S. 77° 00' W.  
Maximum Dip 9.3%

Ephraim Reighart

Ephraim Reighart

Michael Bracken (In Fee)

James W Wilson (Surface)  
Michael Bracken (Coal)

30.52 Acs.