

LEASE LINE
MINING COMPLETED

Joseph Gardner

CYMBRIA FUEL CO. (SUR.)

13
65
100.1
100

9-15-66

3-23-58

7-15-66

7-15-66

7-15-66

7-15-66

7-15-66

7-15-66

7-15-66

7-15-66

7-15-66

7-15-66

7-15-66

7-15-66

7-15-66

7-15-66

7-15-66

7-15-66

7-15-66

7-15-66

7-15-66

7-15-66

7-15-66

7-15-66

7-15-66

7-15-66

7-15-66

7-15-66

7-15-66

7-15-66

7-15-66

7-15-66

7-15-66

7-15-66

7-15-66

7-15-66

7-15-66

7-15-66

7-15-66

SHOWING A PORTION OF
THIS OTHERWISE ABANDONED
"D" SEAM MINE BEING OPERATED
BY WOODS COAL CO
RUSSELL WOODS - OWNER

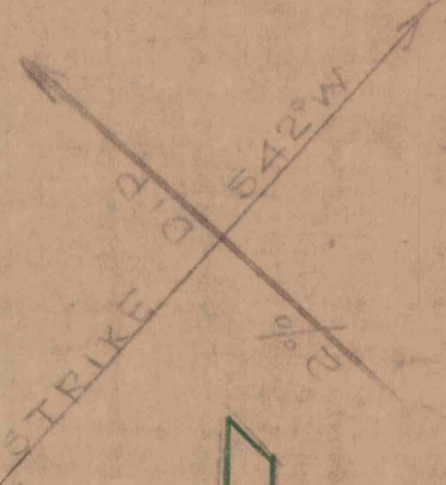
Sept 1957 SCALE 1"=100'
Revised Sept 1961
SEPT. 1966

JACOB TRYBUS (SUR)

PERMIT NO 236-J PROJECTION NO 8

PROJECTED MINING AREA FROM 12-6-70 TO 6-6-71

Monte C. Russell PE



D" DRIFT (abandoned)

98