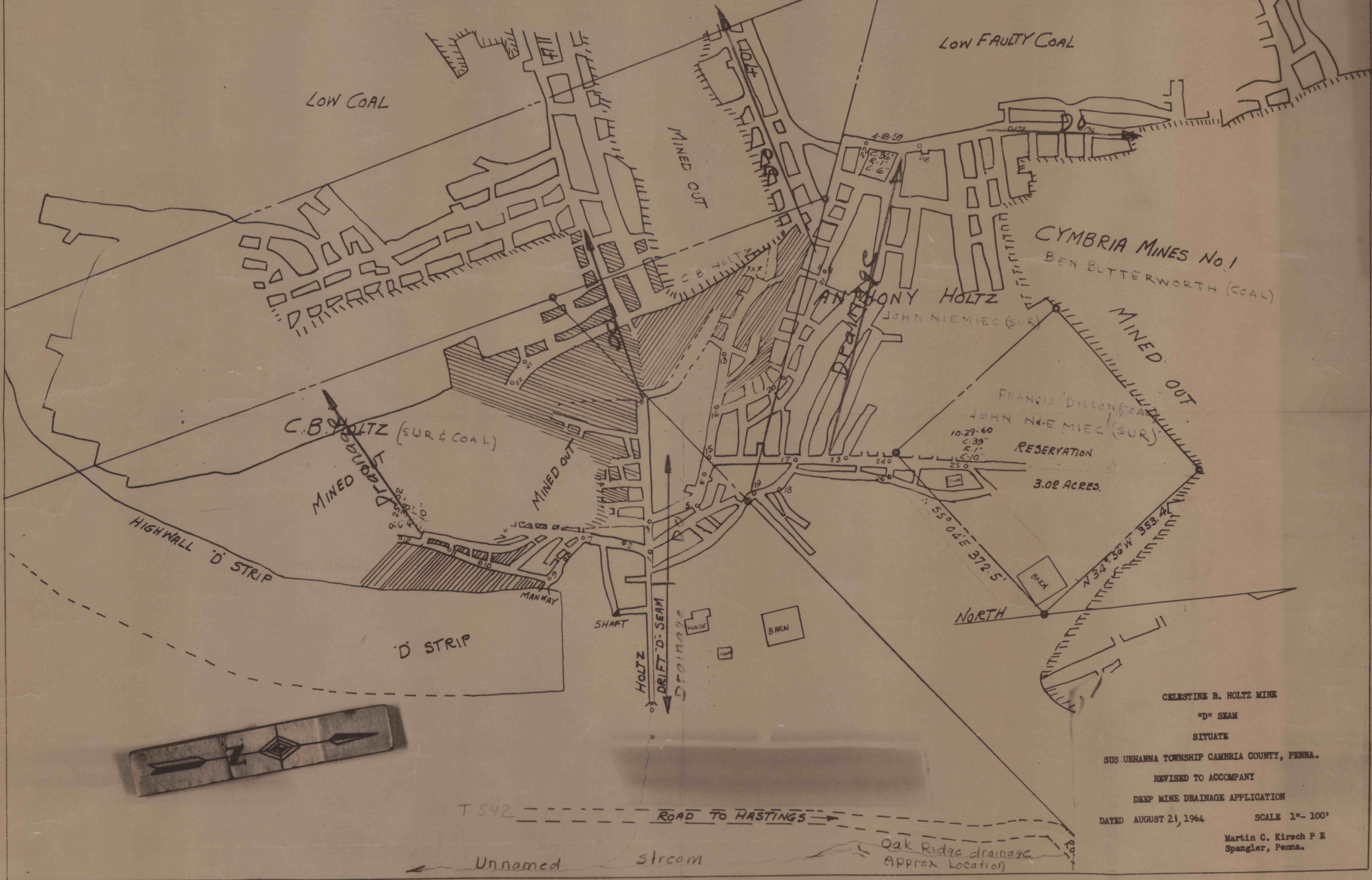
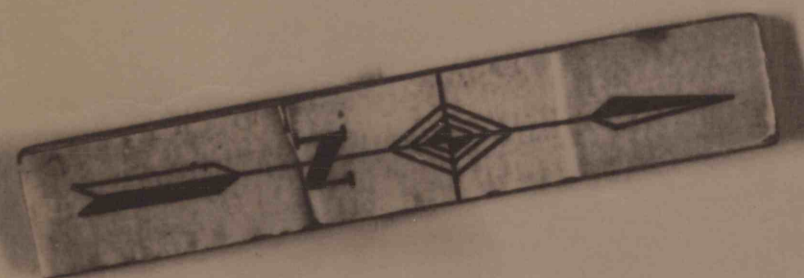


Note -- Natural Drainage thru Cymbria old workings To Walnut Run



CELESTINE B. HOLTZ MINE  
 "D" SEAM  
 SITUATE  
 SUS UEHANNA TOWNSHIP CAMBRIA COUNTY, PENNA.  
 REVISED TO ACCOMPANY  
 DEEP MINE DRAINAGE APPLICATION  
 DATED AUGUST 21, 1964 SCALE 1" = 100'  
 Martin C. Kirsch P E  
 Spangler, Penna.



PDVMS

03144 402 16X 354088