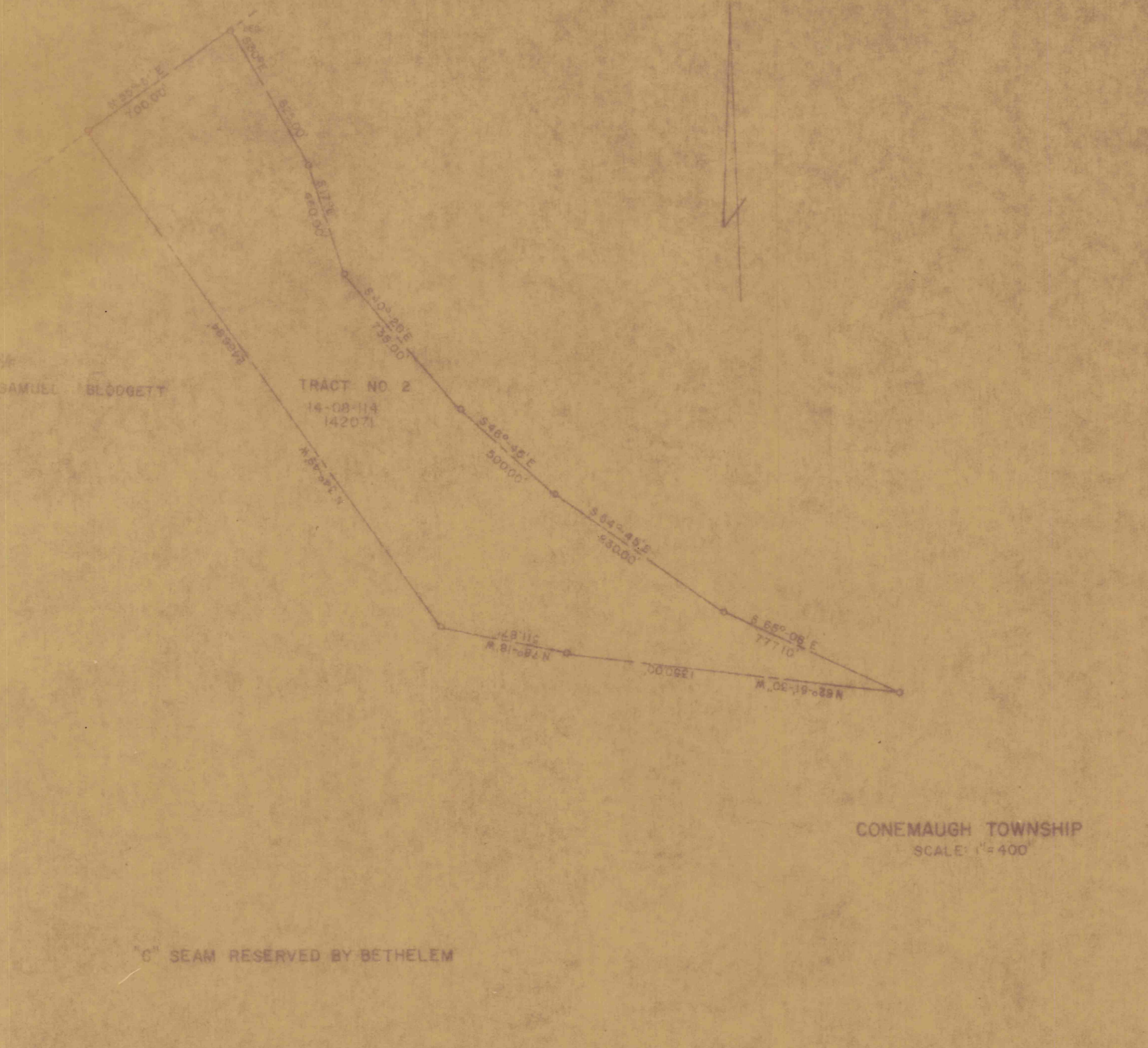


MAP NO. 17A
MINERAL



MAP
SHOWING LANDS OF
EVAN L. JONES
(778-782)
LOCATED IN THE
SOUTH FORK AREA
OF
CAMBRIA COUNTY, PENNSYLVANIA,
1972 SCALE 1"=400'

NOTE DEED 778-782 FOR BETHELEM STEEL CO. TO EVAN L. JONES, JUNE 1, 1969

MAP NO. 17
MINERAL



MAP
SHOWING LANDS OF
EVAN L. JONES
(819-882)
LOCATED IN THE
SOUTH FORK AREA
OF
CAMBRIA COUNTY, PENNSYLVANIA,
1972 SCALE 1"=400'

NOTE DEED 819-882 FROM BETHELEM STEEL CO. TO EVAN L. JONES APRIL 15, 1969