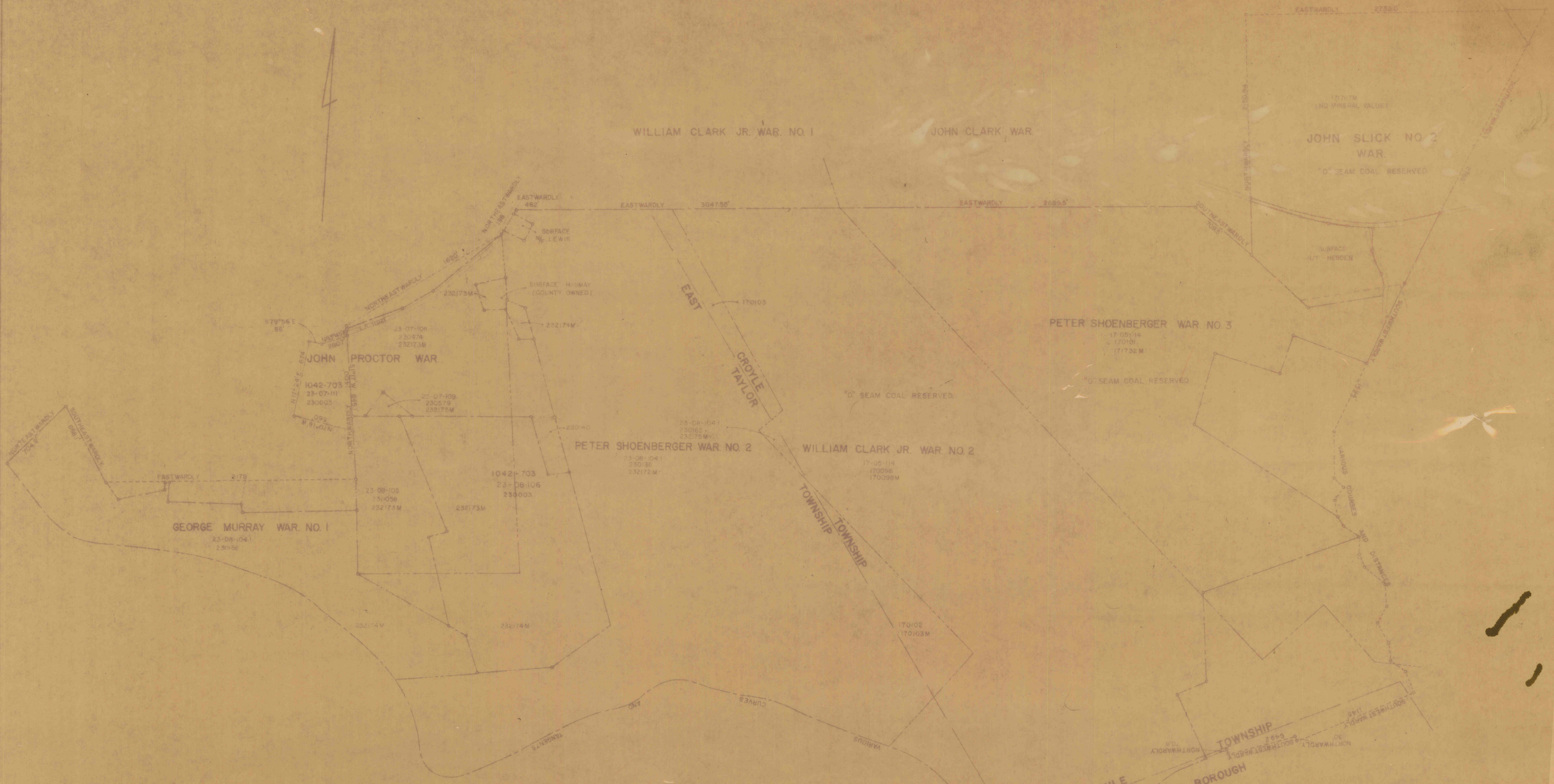


MAP NO. 23A
FEE



CROYLE TOWNSHIP
SOUTH FORK BOROUGH

MAP
SHOWING LANDS OF
EVAN L. JONES
(778-752)
LOCATED
IN THE
SOUTH FORK AREA
OF
CAMBRIA COUNTY PENNSYLVANIA
SCALE 2" = 400'

NOTE DEED 778-752 FOR BETHLEHEM STEEL CO. TO EVAN L. JONES, JUNE 1, 1955, TRACT NO.