

REAL ESTATE DEPT. RECORD
 ROLL MAP B 2425
 CASE NUMBER 59213

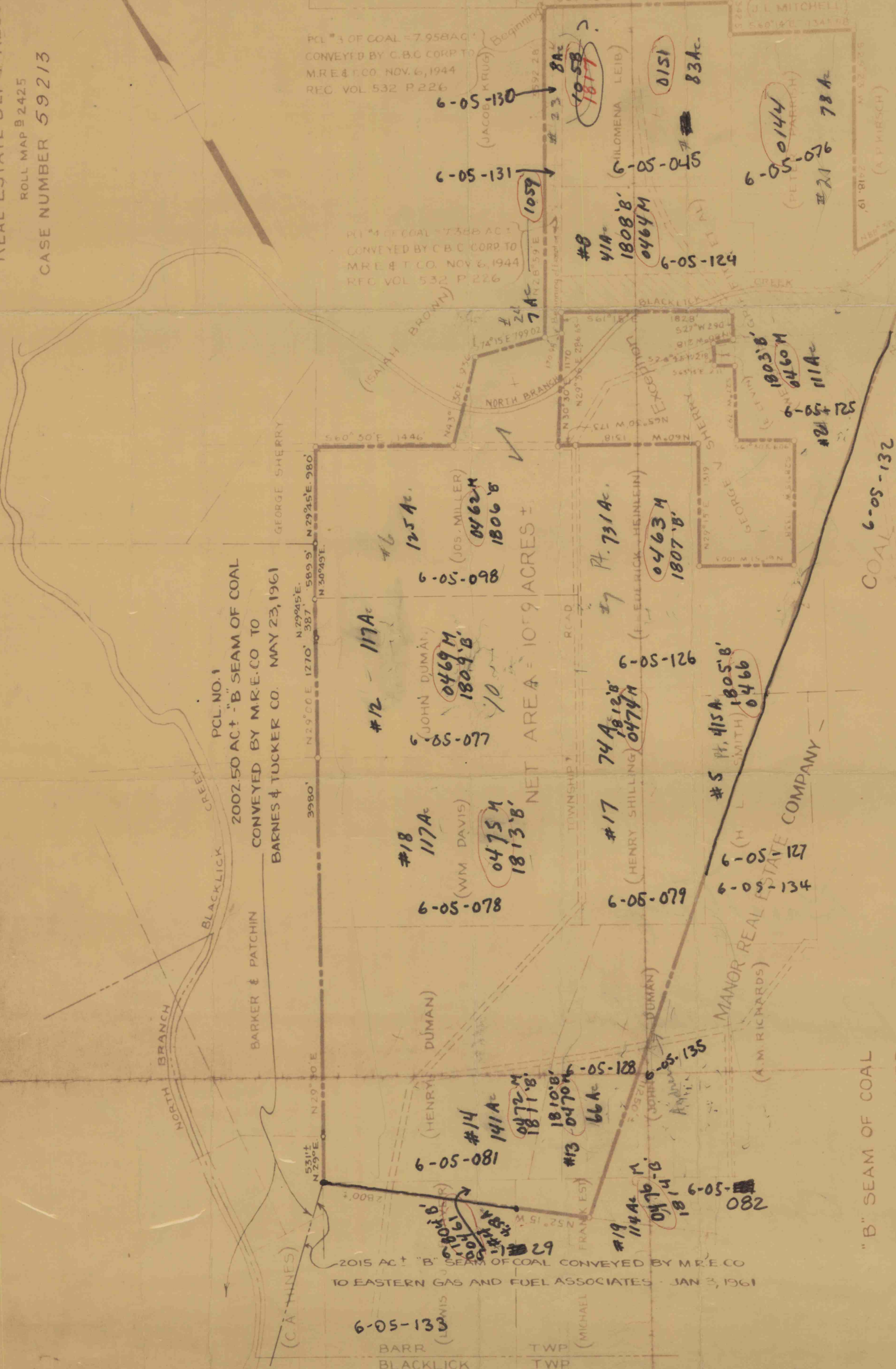
LEASE "B" SEAM OF COAL - M.R.E. & T. CO. TO BARNES & TUCKER CO.
 JULY 1, 1940 - 1957 AC. - REC VOL 519 P 202
 (JOHN P. KIRSCH) (ANDREW KIRSCH)
 560° 35' E 198778

PCL #3 OF COAL - 7.958 AC.
 CONVEYED BY C.B.C. CORP. TO
 M.R.E. & T. CO. NOV. 6, 1944
 REC VOL 532 P 226

PCL #4 OF COAL - 7.386 AC.
 CONVEYED BY C.B.C. CORP. TO
 M.R.E. & T. CO. NOV. 6, 1944
 REC VOL 532 P 226

PCL NO. 1
 2002.50 AC. "B" SEAM OF COAL
 CONVEYED BY M.R.E. CO. TO
 BARNES & TUCKER CO. MAY 23, 1961

2015 AC. "B" SEAM OF COAL
 CONVEYED BY M.R.E. CO.
 TO EASTERN GAS AND FUEL ASSOCIATES - JAN 3, 1961



1955 AC. PCL NO. 5
 LEASE "B" SEAM OF COAL
 M.R.E. CO. TO STERLING COAL CO.
 JAN 6, 1961
 REDUCED BY 254.169 AC. BY
 SUPPLEMENTAL AGREEMENT FEB 5, 1963

COAL TO BE CONVEYED
 M.R.E. CO. - COAL
 M.R.E. CO. - SURFACE

"B" SEAM OF COAL
 TO BE CONVEYED

BY
 MANOR REAL ESTATE COMPANY
 TO
 BARNES & TUCKER COMPANY

BARR (LEWIS) TWP
 BLACKLICK TWP