



GEORGE PEABOCK

RESERVE  
400 ACRES

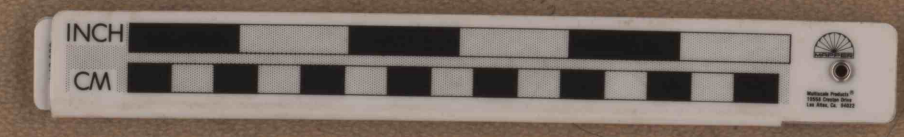
ROBT. COWDEN.  
TOTAL AREA 383.27 ACRES.

MARY HEIRS  
AREA 182.5 ACRES

RESERVE 4 ACRES

WILSON 500.  
SURFACE AREA 181.55 ACRES.  
TOTAL AREA 1422.4 ACRES

388 033 1"=100' XSL 217



ALEX. EASTON.  
SURFACE AREA 182.55 ACRES.  
TOTAL AREA 182.55 ACRES

ISAAC PAXTON.  
TOTAL AREA 52.55 ACRES.

JOHN RUSSELL  
NET AREA 100.75 ACRES

ROBT. COWDEN.  
SURFACE AREA 24.35 ACRES.  
TOTAL AREA 49.35 ACRES

RESERVE  
AREA 100 ACRES

ANDREW D. WILSON.  
SURFACE AREA 181.55 ACRES.

STATE OF SURVEY  
Survey Comm. - Jan 24, 1888  
Survey 20, 1888 - 27, 1888  
SEPT. 2, 1888 - 6, 1888  
DEC. 15, 1888 - 17, 1888  
MAY 1, 1889 - 8, 1889  
JULY 1, 1889 - 7, 1889