

48-
47-
46-
45-
44-

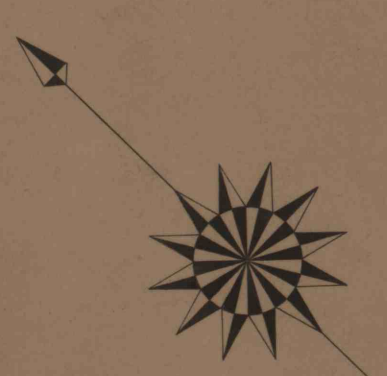
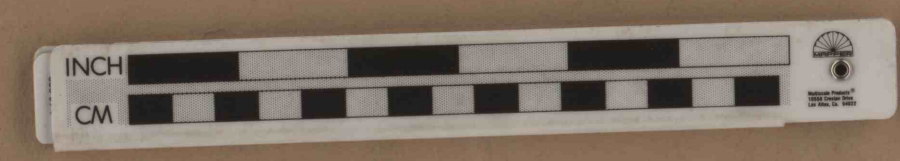
ENCLOSURE
CAMPBELL M. ORELAND
JAN 21 1907



58 56 54
51 55 53

54 56
53 55 57

**PLAN OF
ECLIPSE MINES**
OWNED BY
OSBORN, SAGER & CO.
AT
VENETA, WASHINGTON CO.
ON THE WHEELING DIVISION OF THE BALTIMORE & OHIO RAIL ROAD.
SCALE: 100 FEET = 1 INCH.
MCMXVII ME
West Newton, Pa.
October 1907



44-
45-
46-
47-
48-