

JAS. SMITH SR.
P. 2-25

PERMELIA SCHRONTZ NO. 1
P. 2-25

SCHRONTZ HEIRS
P. 2-25

SAMUEL BRADEN
P. 2-25

W. G. & J. M. EVANS
P. 2-25

C. V. LEWIS
P. 2-25

J. H. MEEK
P. 2-25

JOSEPH M. SMITH
P. 2-25

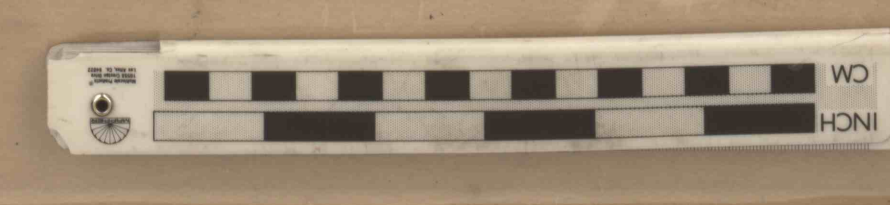
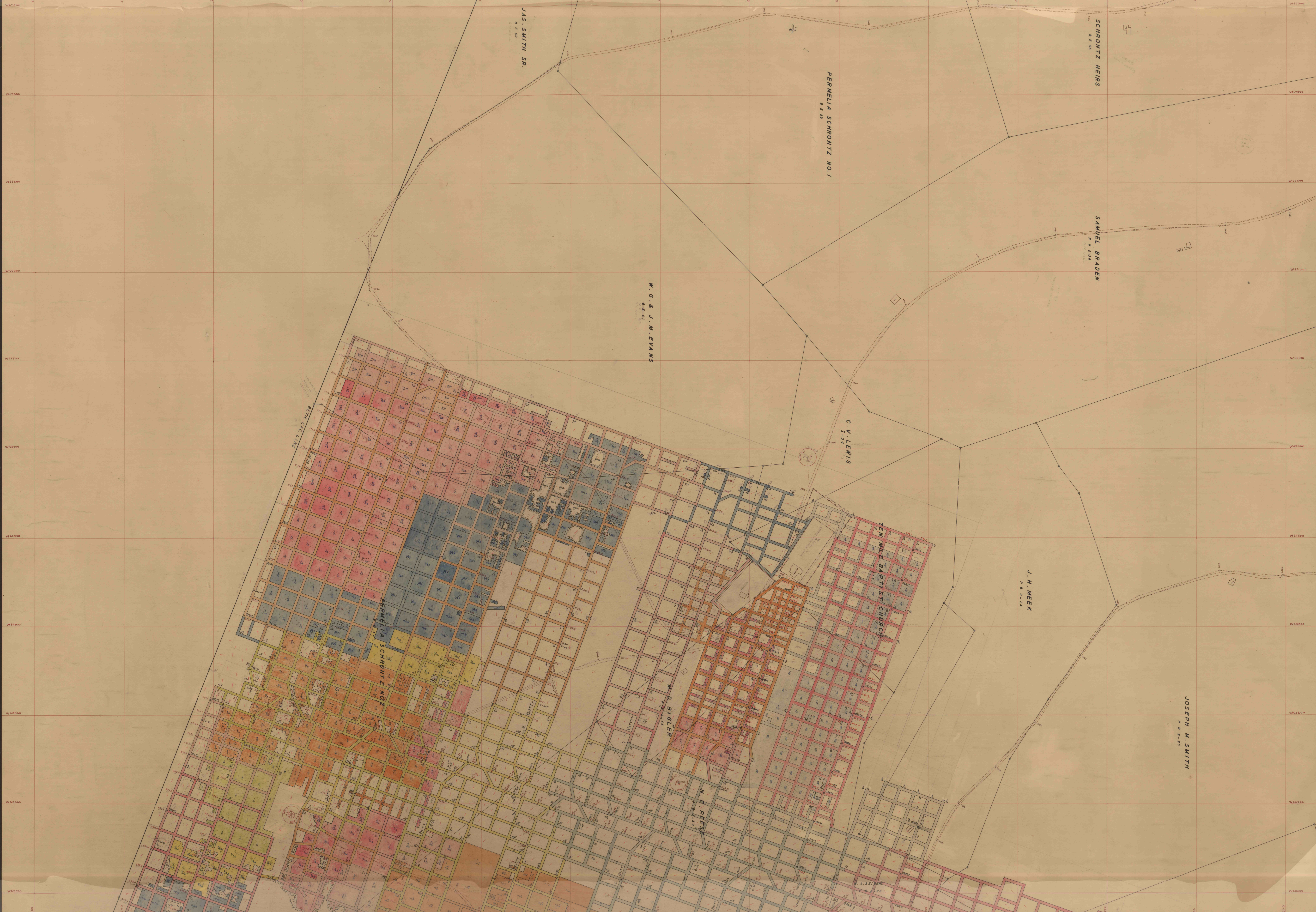
PERMELIA SCHRONTZ NO. 2
P. 2-25

M. D. BIGLER
P. 2-25

M. E. REES
P. 2-25

TEN MILE BAPTIST CHURCH
P. 2-25

BEYOND EAC. LINE



80
11
79

60
11
79

60
11
79