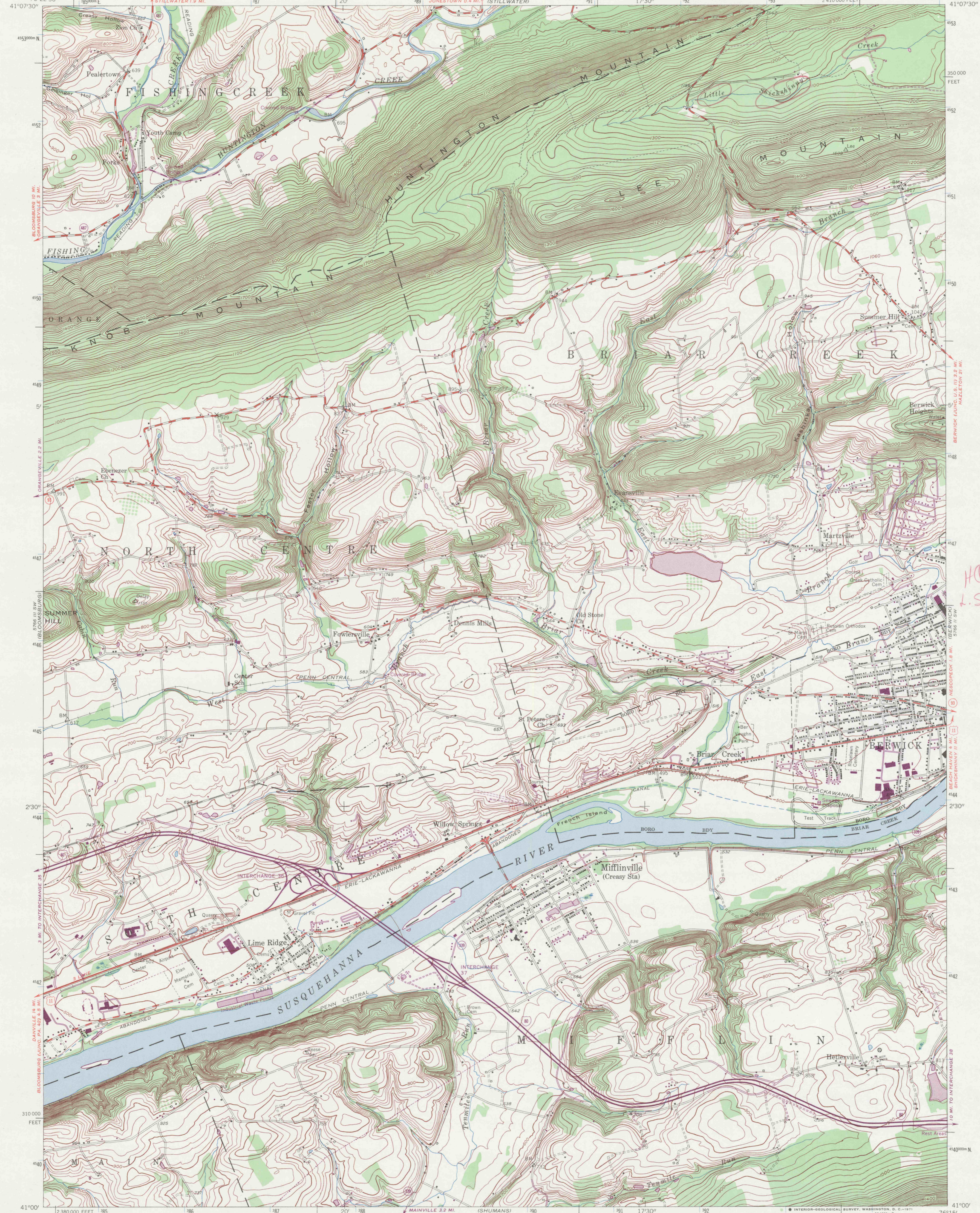


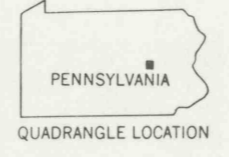
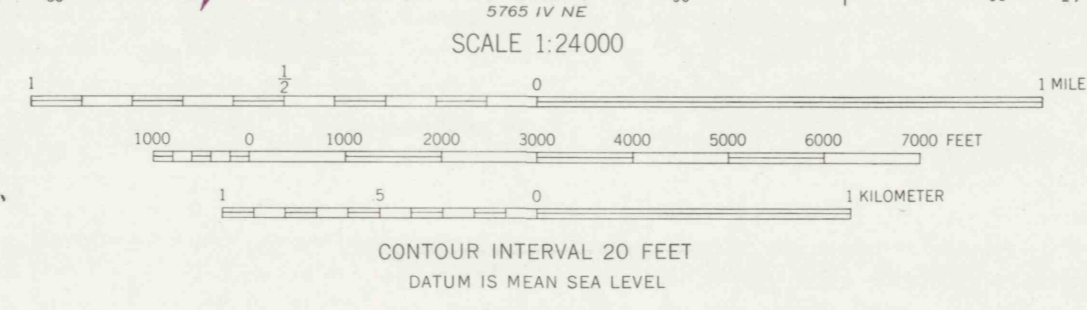
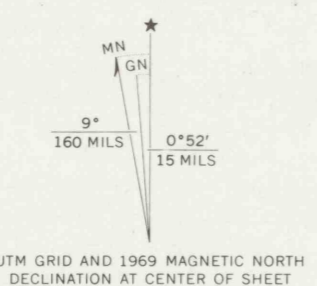
5766 III NW
(GENTON)

5766 III NW
(SHICKSHINNY)



*HQ stream
L. Shickshinny
ck*

Mapped, edited, and published by the Geological Survey
Control by USGS and USC&GS
Topography from aerial photographs by multiplex methods
Aerial photographs taken 1942. Field check 1944
Culture revised 1954
Polyconic projection. 1927 North American datum
10,000-foot grid based on Pennsylvania coordinate system,
north zone
1000-meter Universal Transverse Mercator grid ticks,
zone 18, shown in blue
Revisions shown in purple compiled in cooperation with
State of Pennsylvania agencies from aerial photographs
taken 1969. This information not field checked



ROAD CLASSIFICATION

Heavy-duty	Light-duty
Medium-duty	Unimproved dirt
U. S. Route	State Route
Interstate Route	

MIFFLINVILLE, PA.
SE/4 BLOOMSBURG 15' QUADRANGLE
N4100—W7615/7.5

1954
PHOTOREVISED 1969
AMS 5766 III SE—SERIES V831

THIS MAP COMPLIES WITH NATIONAL MAP ACCURACY STANDARDS
FOR SALE BY U. S. GEOLOGICAL SURVEY, WASHINGTON, D. C. 20242
A FOLDER DESCRIBING TOPOGRAPHIC MAPS AND SYMBOLS IS AVAILABLE ON REQUEST

DRAWING NUMBER

DRAWING NUMBER

DRAWING NUMBER

SAM
4-18.2

4-18.2

4-18.2