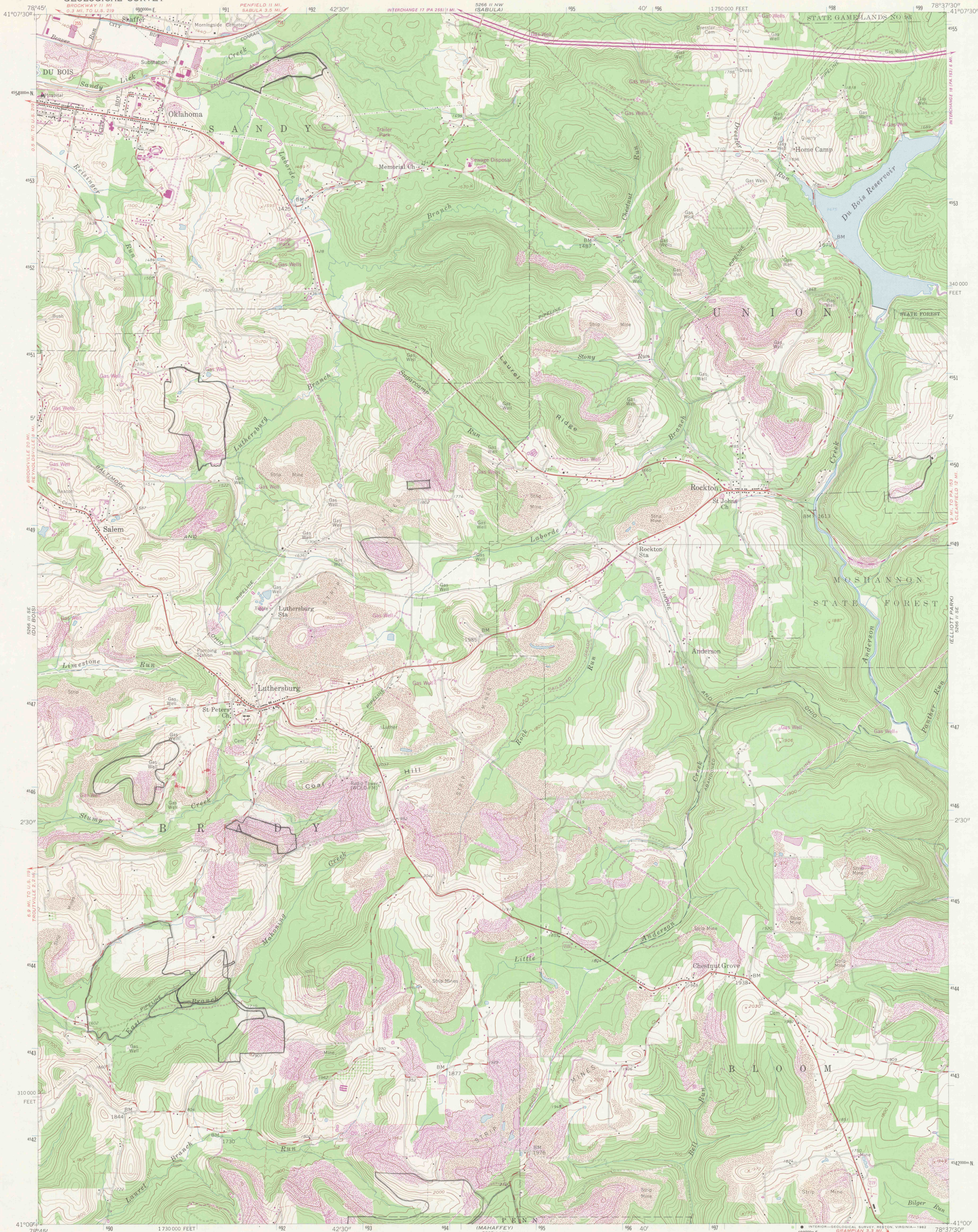


UNITED STATES
DEPARTMENT OF THE INTERIOR
GEOLOGICAL SURVEY

LUTHERSBURG QUADRANGLE
PENNSYLVANIA—CLEARFIELD CO.
7.5 MINUTE SERIES (TOPOGRAPHIC)



Mapped, edited, and published by the Geological Survey

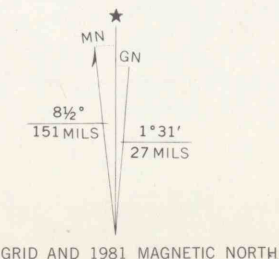
Control by USGS and NOS/NOAA

Topography by photogrammetric methods from aerial photographs taken 1958. Field checked 1959

Polyconic projection; 10,000-foot grid ticks based on Pennsylvania coordinate system, north zone 1000-meter Universal Transverse Mercator grid ticks, zone 17, shown in blue. 1927 North American Datum To place on the predicted North American Datum 1983 move the projection lines 4 meters south and 22 meters west as shown by dashed corner ticks

Fine red dashed lines indicate selected fence and field lines where generally visible on aerial photographs. This information is unchecked.

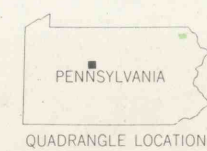
There may be private inholdings within the boundaries of the National or State reservations shown on this map



THIS MAP COMPLIES WITH NATIONAL MAP ACCURACY STANDARDS
FOR SALE BY U.S. GEOLOGICAL SURVEY, RESTON, VIRGINIA 22092
A FOLDER DESCRIBING TOPOGRAPHIC MAPS AND SYMBOLS IS AVAILABLE ON REQUEST

ROAD CLASSIFICATION

Primary highway, all weather, hard surface	Light-duty road, all weather, improved surface
Secondary highway, all weather, hard surface	Unimproved road, fair or dry weather
Interstate Route	U. S. Route
	State Route



LUTHERSBURG, PA.

N4100—W7837.5/7.5

1959
PHOTOREVISED 1981
DMA 5266 II SW-SERIES V83 I

DRAWING NUMBER

DRAWING NUMBER

DRAWING NUMBER

DRAWING NUMBER
4-9-3

1016