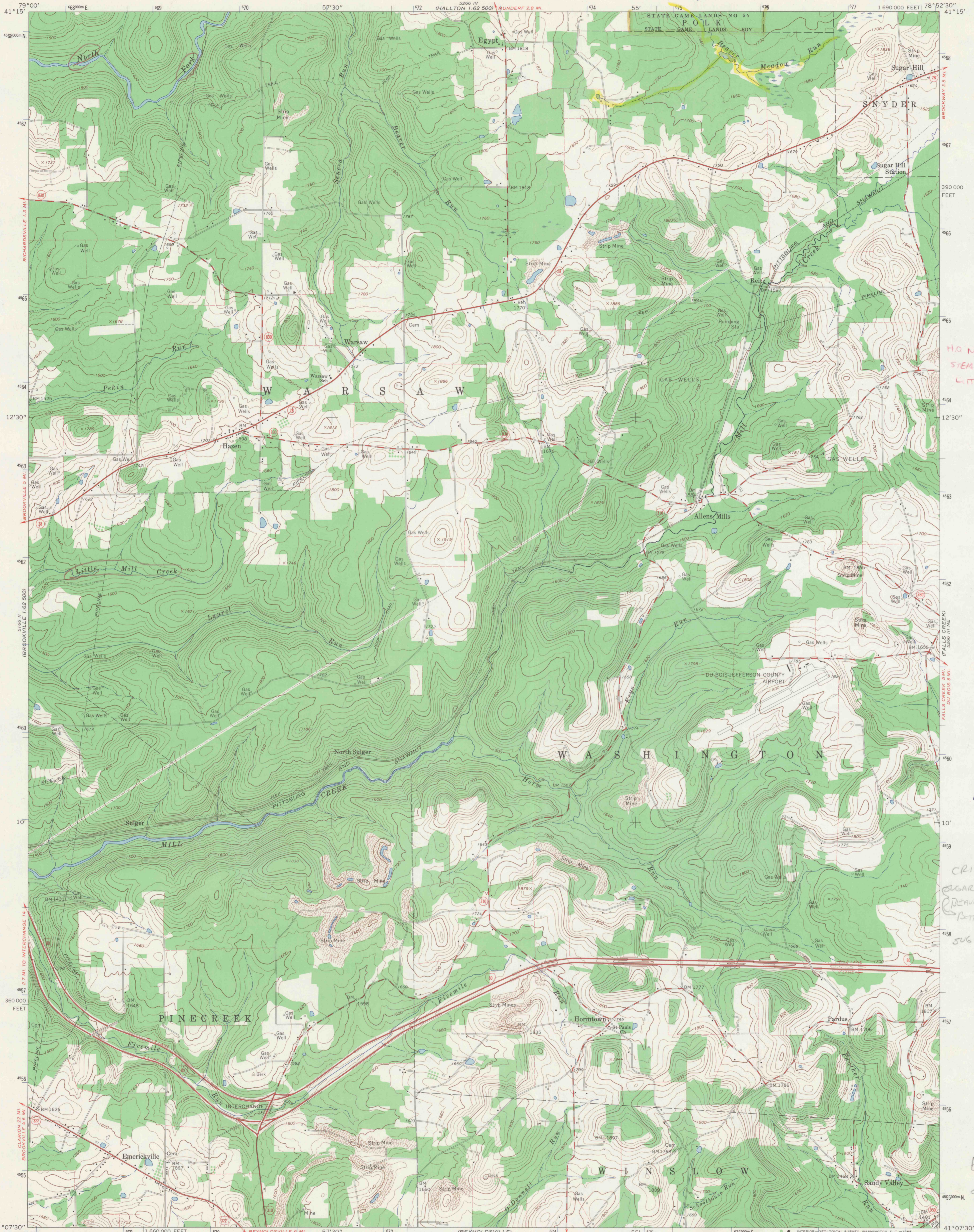


MAP FILED
1962 500

MAP FILED
1962 500

56.L
#54



H.O. North Fork - main
STEM - UNITS
LITTLE MILL CR. BASIN

56.L
#54

CRITICAL HAB
SUGAR HILL MARSH
DEWEAR MEADOW RUN
BOTH IN EV WATERSHED
SUGAR HILL CAVE

EV stream
Southern
North Fork

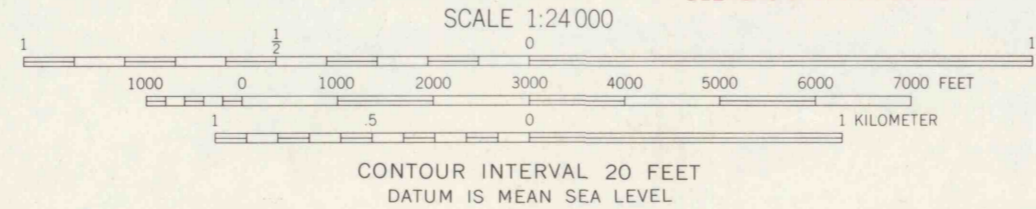
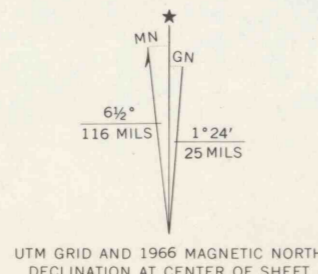
H.8.H

DRAWING NUMBER

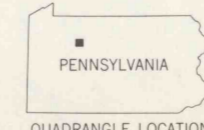
DRAWING NUMBER

DRAWING NUMBER

Mapped, edited, and published by the Geological Survey
Control by USGS and USC&GS
Topography by photogrammetric methods from aerial photographs
taken 1964. Field checked 1966
Polyconic projection. 1927 North American datum
10,000-foot grid based on Pennsylvania coordinate system, north zone
1000-meter Universal Transverse Mercator grid ticks, zone 17,
shown in blue
Fine red dashed lines indicate selected fence and field lines where
generally visible on aerial photographs. This information is unchecked



CONTOUR INTERVAL 20 FEET
DATUM IS MEAN SEA LEVEL



ROAD CLASSIFICATION

Heavy-duty	Light-duty
Medium-duty	Unimproved dirt
Interstate Route	U.S. Route
	State Route

HAZEN, PA.
NW/4 DU BOIS 15' QUADRANGLE
N4107.5—W7852.5/7.5

1966

AMS 5266 III NW—SERIES V631

THIS MAP COMPLIES WITH NATIONAL MAP ACCURACY STANDARDS
FOR SALE BY U.S. GEOLOGICAL SURVEY, WASHINGTON, D. C. 20242
A FOLDER DESCRIBING TOPOGRAPHIC MAPS AND SYMBOLS IS AVAILABLE ON REQUEST