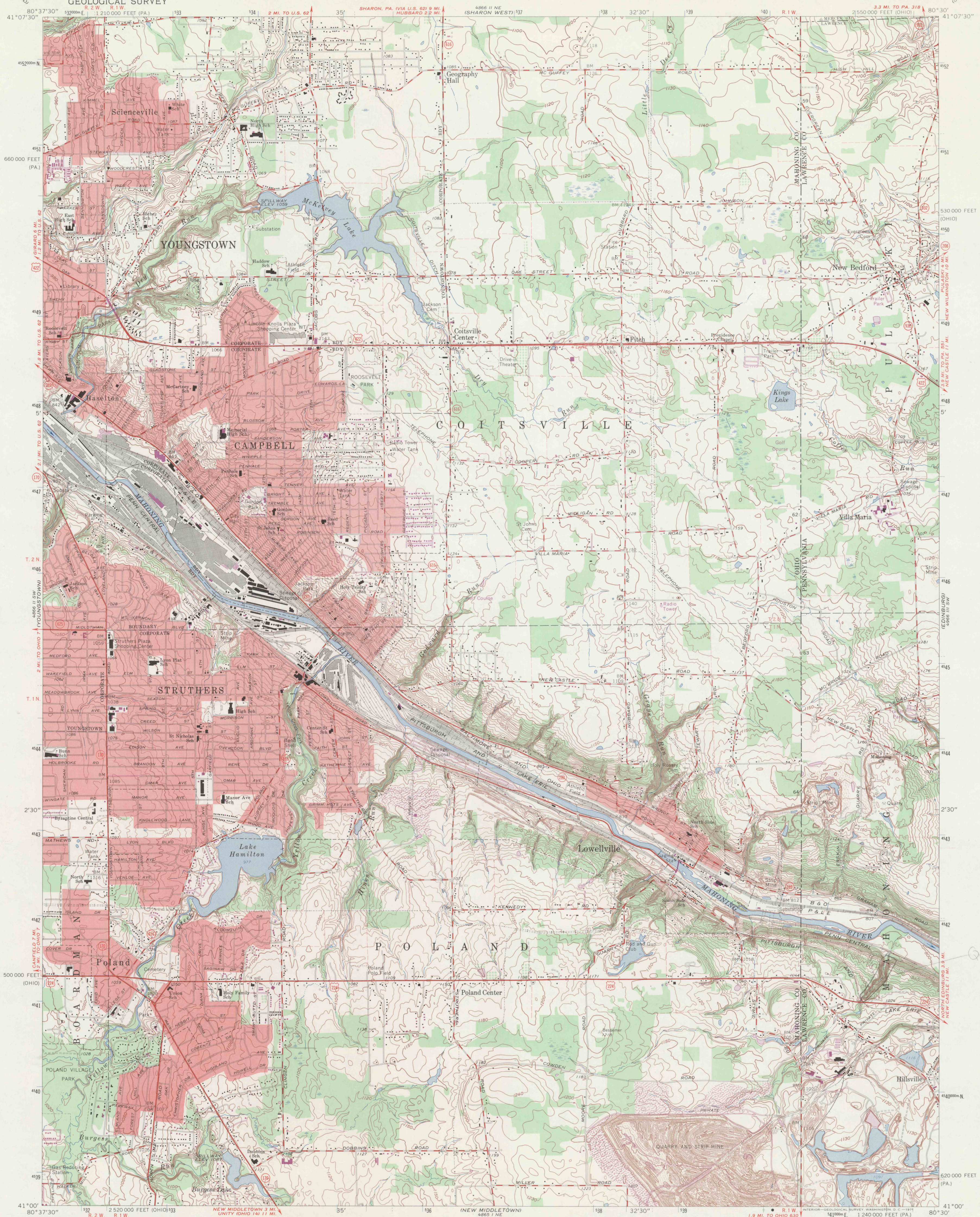
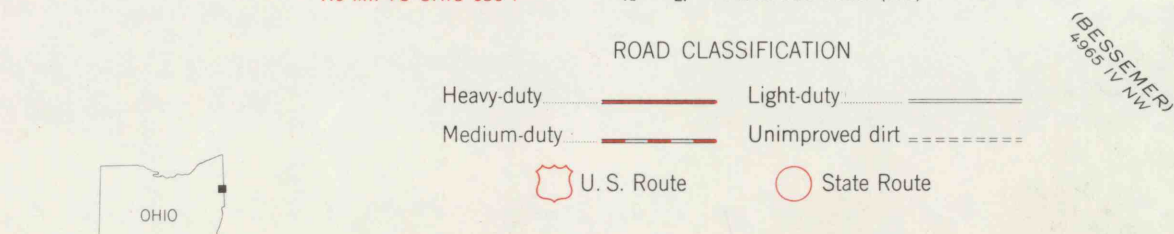
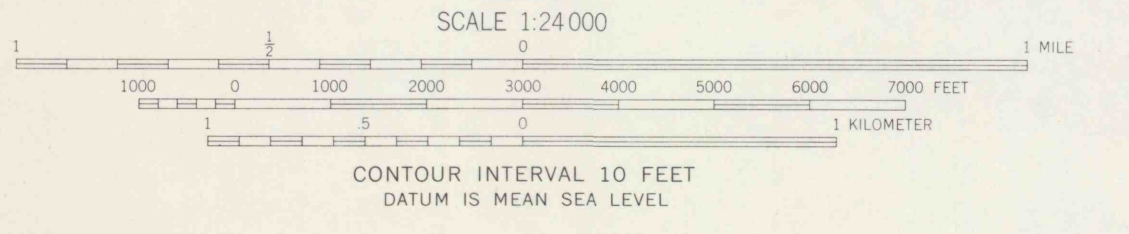
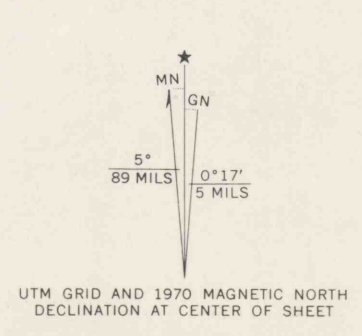


UNITED STATES
DEPARTMENT OF THE INTERIOR
GEOLOGICAL SURVEY

CAMPBELL QUADRANGLE
OHIO-PENNSYLVANIA
7.5 MINUTE SERIES (TOPOGRAPHIC)



Mapped, edited, and published by the Geological Survey in cooperation with County of Mahoning Revised in cooperation with State of Ohio agencies Control by USGS, USC&GS, and County of Mahoning Topography by photogrammetric methods from aerial photographs taken 1950 and planetable surveys 1951. Revised from aerial photographs taken 1962. Field checked 1963
Polyconic projection. 1927 North American datum 10,000-foot grids based on Ohio coordinate system, north zone, and Pennsylvania coordinate system, south zone 1000-meter Universal Transverse Mercator grid ticks, zone 17, shown in blue
Fine red dashed lines indicate selected fence and field lines where generally visible on aerial photographs. This information is unchecked Red tint indicates areas in which only landmark buildings are shown Ohio area lies within the Connecticut Western Reserve. Land lines established by private subdivision of the Connecticut Western Reserve



CAMPBELL, OHIO-PA.
N4100-W8030/7.5
1963
PHOTOREVISED 1970
AMS 4866 II SE-SERIES V852

THIS MAP COMPLIES WITH NATIONAL MAP ACCURACY STANDARDS FOR SALE BY U.S. GEOLOGICAL SURVEY, WASHINGTON, D.C. 20242 A FOLDER DESCRIBING TOPOGRAPHIC MAPS AND SYMBOLS IS AVAILABLE ON REQUEST

Revisions shown in purple compiled in cooperation with State of Ohio agencies from aerial photographs taken 1970 This information not field checked

DRAWING NUMBER
PLAN HOLD CORPORATION • RIVINE, CALIFORNIA
REVISION NUMBER 02/84

DRAWING NUMBER
PLAN HOLD CORPORATION • RIVINE, CALIFORNIA
REVISION NUMBER 02/84

DRAWING NUMBER
PLAN HOLD CORPORATION • RIVINE, CALIFORNIA
REVISION NUMBER 02/84

SAM 4-1-2

Quakerdam Falls

4-1-2