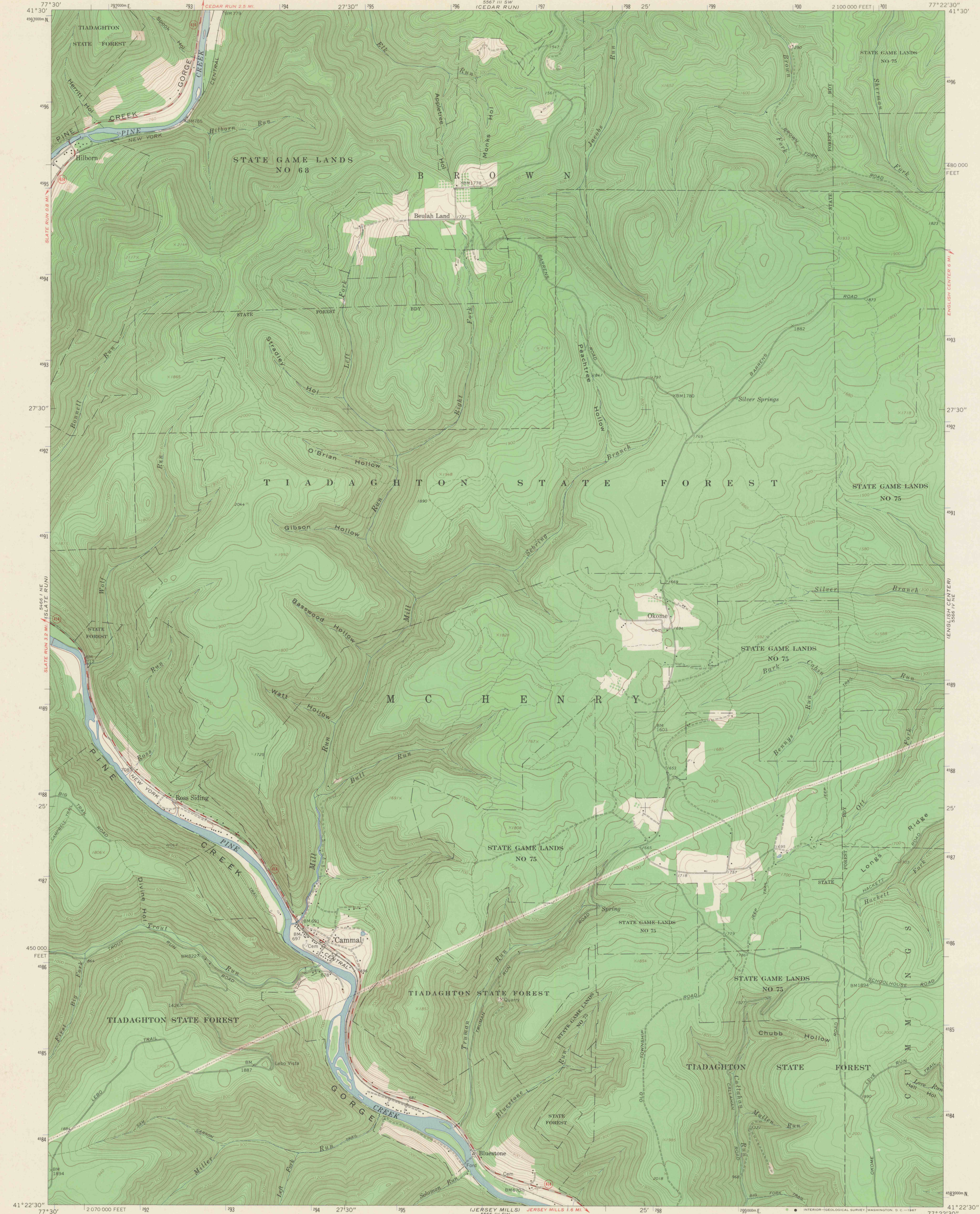


UNITED STATES
DEPARTMENT OF THE INTERIOR
GEOLOGICAL SURVEY

STATE OF PENNSYLVANIA
DEPARTMENT OF INTERNAL AFFAIRS
TOPOGRAPHIC AND GEOLOGIC SURVEY

CAMMAL QUADRANGLE
PENNSYLVANIA—LYCOMING CO.
7.5 MINUTE SERIES (TOPOGRAPHIC)
NW/4 WATERVILLE 15' QUADRANGLE



PLAN HOLD

PEEL PROTECTIVE STRIP TO EXPOSE ADHESIVE. POSITION EDGE OF PRINT ON THIS LINE AND RUB TO ADHERE.

PLAN HOLD CORPORATION • TORRANCE • CALIFORNIA
REORDER BY NO. 0763-24

DRAWING NUMBER
3-14.4

0726

Mapped, edited, and published by the Geological Survey
Control by USGS and USC&GS
Topography by photogrammetric methods from aerial
photographs taken 1963. Field checked 1965
Polyconic projection. 1927 North American datum
10,000-foot grid based on Pennsylvania coordinate system, north zone
1000-meter Universal Transverse Mercator grid ticks,
zone 18, shown in blue
Fine red dashed lines indicate selected fence and field lines where
generally visible on aerial photographs. This information is unchecked

UTM GRID AND 1965 MAGNETIC NORTH
DECLINATION AT CENTER OF SHEET

SCALE 1:24,000
CONTOUR INTERVAL 20 FEET
DATUM IS MEAN SEA LEVEL

PENNSYLVANIA
QUADRANGLE LOCATION

ROAD CLASSIFICATION
Medium-duty ——— Light-duty ———
Unimproved dirt ———
State Route ———

CAMMAL, PA.
NW/4 WATERVILLE 15' QUADRANGLE
N4122.5—W7722.5/7.5

1965

AMS 5566 IV NW—SERIES W831