

**MURRIN RUN
CURVE DATA TABLE**

Curve No.	Δ	D	R	T	L	P.C. Sta.	P.T. Sta.
1	16°00'00"	13°25'44"	426.92'	60.00'	119.22"	0+400.00 M	1+59.22 M
2	38°00'00"	9°51'53"	580.84'	200.00'	385.23'	2+100.00 M	5+95.23 M

BENCH MARK DATA

BM	ELEVATION	DESCRIPTION
BF 78-1	1344.75	SET 5/8" REBAR WITH CAP
BF 78-2	1178.54	SET 5/8" REBAR WITH CAP

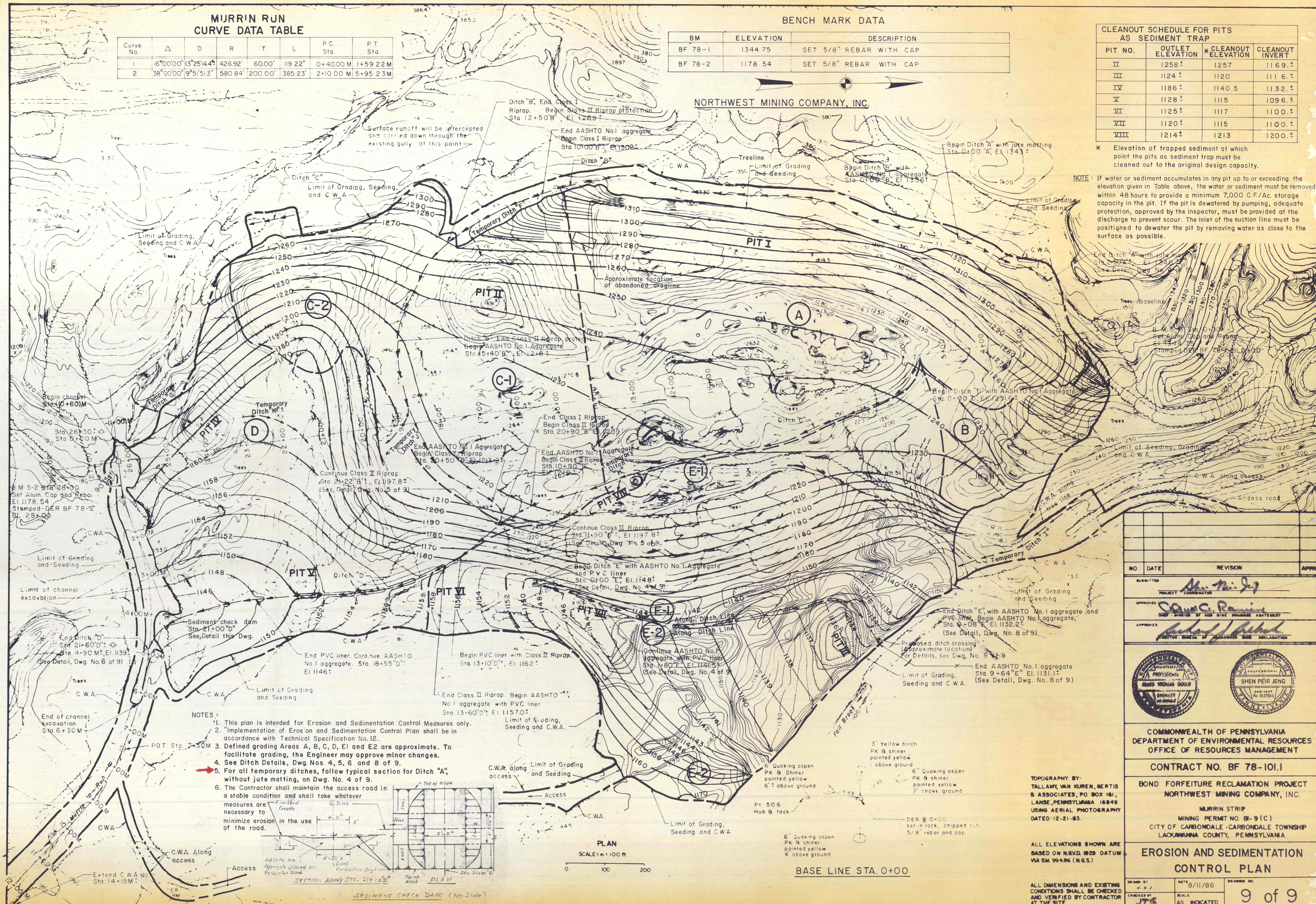
CLEANOUT SCHEDULE FOR PITS AS SEDIMENT TRAP

PIT NO.	OUTLET ELEVATION	* CLEANOUT ELEVATION	CLEANOUT INVERT
II	1258 ±	1257	1169 ±
III	1124 ±	1120	1116 ±
IV	1186 ±	1140.5	1132 ±
V	1128 ±	1115	1096 ±
VI	1125 ±	1117	1100 ±
VII	1120 ±	1115	1100 ±
VIII	1214 ±	1213	1200 ±

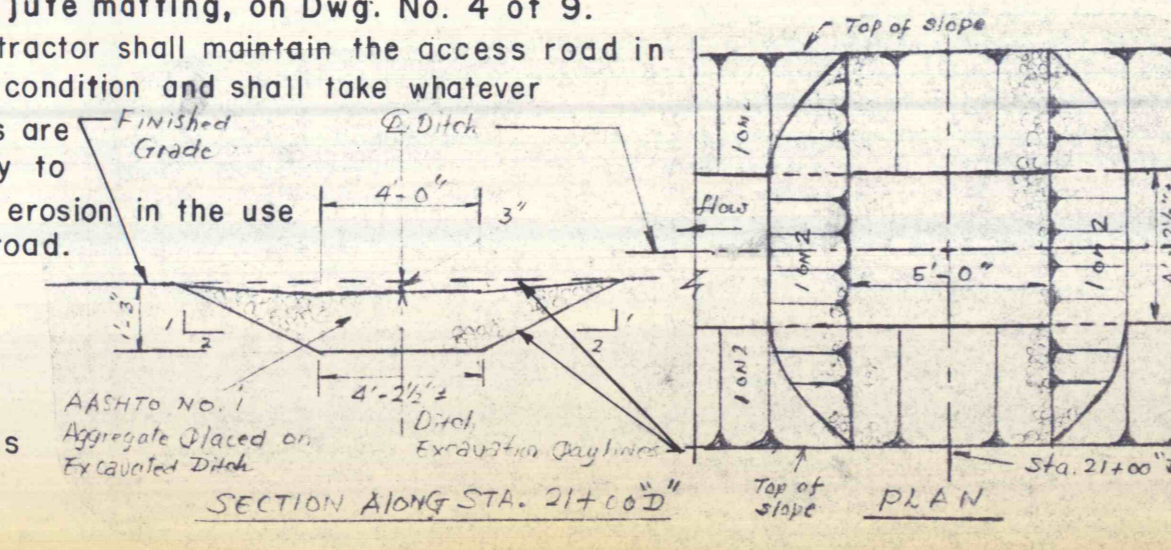
* Elevation of trapped sediment at which point the pits as sediment trap must be cleaned out to the original design capacity.

NOTE: If water or sediment accumulates in any pit up to or exceeding the elevation given in Table above, the water or sediment must be removed within 48 hours to provide a minimum 7,000 C.F./Ac. storage capacity in the pit. If the pit is dewatered by pumping, adequate protection, approved by the Inspector, must be provided at the discharge to prevent scour. The inlet of the suction line must be positioned to dewater the pit by removing water as close to the surface as possible.

NORTHWEST MINING COMPANY, INC.



- NOTES:**
- This plan is intended for Erosion and Sedimentation Control Measures only.
 - Implementation of Erosion and Sedimentation Control Plan shall be in accordance with Technical Specification No. 12.
 - Defined grading Areas A, B, C, D, E1 and E2 are approximate. To facilitate grading, the Engineer may approve minor changes.
 - See Ditch Details, Dwg. Nos. 4, 5, 6 and 8 of 9.
 - For all temporary ditches, follow typical section for Ditch "A", without jute matting, on Dwg. No. 4 of 9.
 - The Contractor shall maintain the access road in a stable condition and shall take whatever measures are necessary to minimize erosion in the use of the road.



PLAN
SCALE: 1" = 100 FT.

BASE LINE STA. 0+00

NO.	DATE	REVISION	APPR.

SUBMITTED: *Shen Peir Jeng*
 PROJECT COORDINATOR
 APPROVED: *James C. Rammer*
 CHIEF, DIVISION OF ACID MINE DRAINAGE ABATEMENT
 APPROVED: *Richard J. Pichler*
 DIRECTOR, BUREAU OF ABANDONED MINE RECLAMATION

COMMONWEALTH OF PENNSYLVANIA
 DEPARTMENT OF ENVIRONMENTAL RESOURCES
 OFFICE OF RESOURCES MANAGEMENT
 CONTRACT NO. BF 78-101.1
 BOND FORFEITURE RECLAMATION PROJECT
 NORTHWEST MINING COMPANY, INC.
 MURRIN STRIP
 MINING PERMIT NO. 81-9 (C)
 CITY OF CARBONDALE - CARBONDALE TOWNSHIP
 LACKAWANNA COUNTY, PENNSYLVANIA

**EROSION AND SEDIMENTATION
CONTROL PLAN**

TOPOGRAPHY BY:
 TALLAMY, VAN KUREN, BERTIS
 & ASSOCIATES, P.O. BOX 181,
 LANSE, PENNSYLVANIA 16849
 USING AERIAL PHOTOGRAPHY
 DATED 12-21-83.

ALL ELEVATIONS SHOWN ARE
 BASED ON N.E.V.D. 1929 DATUM
 VIA BM 994.86 (N.G.S.)

ALL DIMENSIONS AND EXISTING
 CONDITIONS SHALL BE CHECKED
 AND VERIFIED BY CONTRACTOR
 AT THE SITE.

DRAWN BY: *H. M. Z.*
 DATE: 8/11/86
 CHECKED BY: *JTG*
 SCALE: AS INDICATED
 DRAWING NO.: 9 of 9