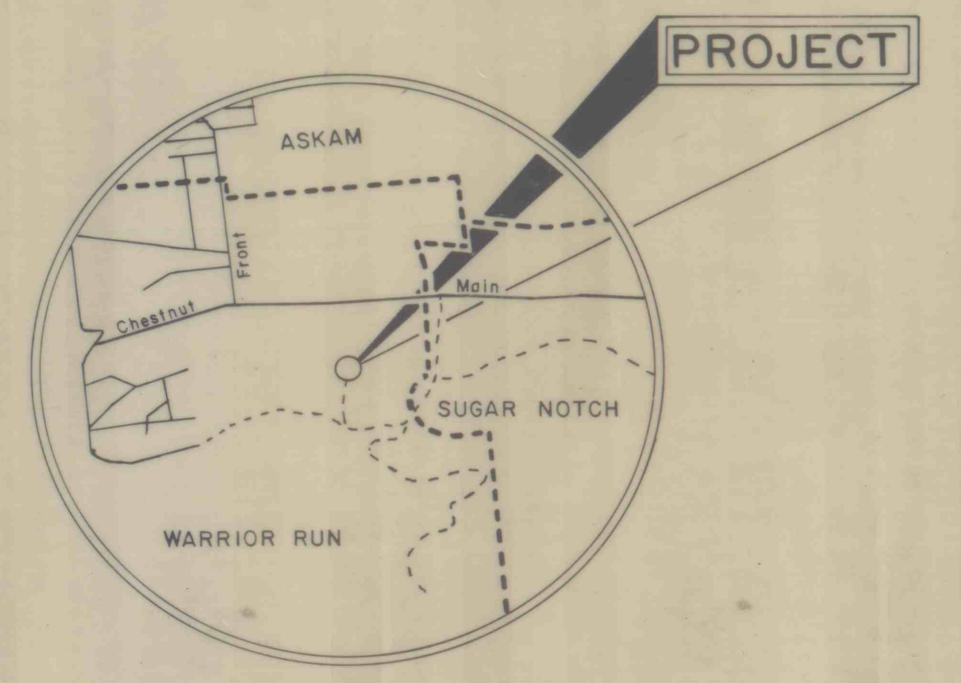
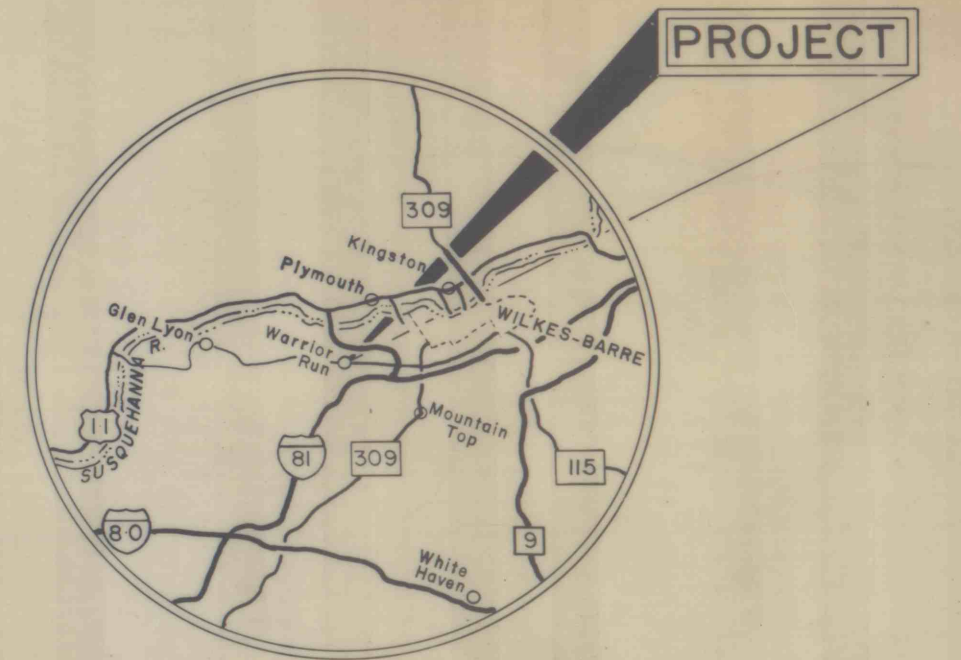
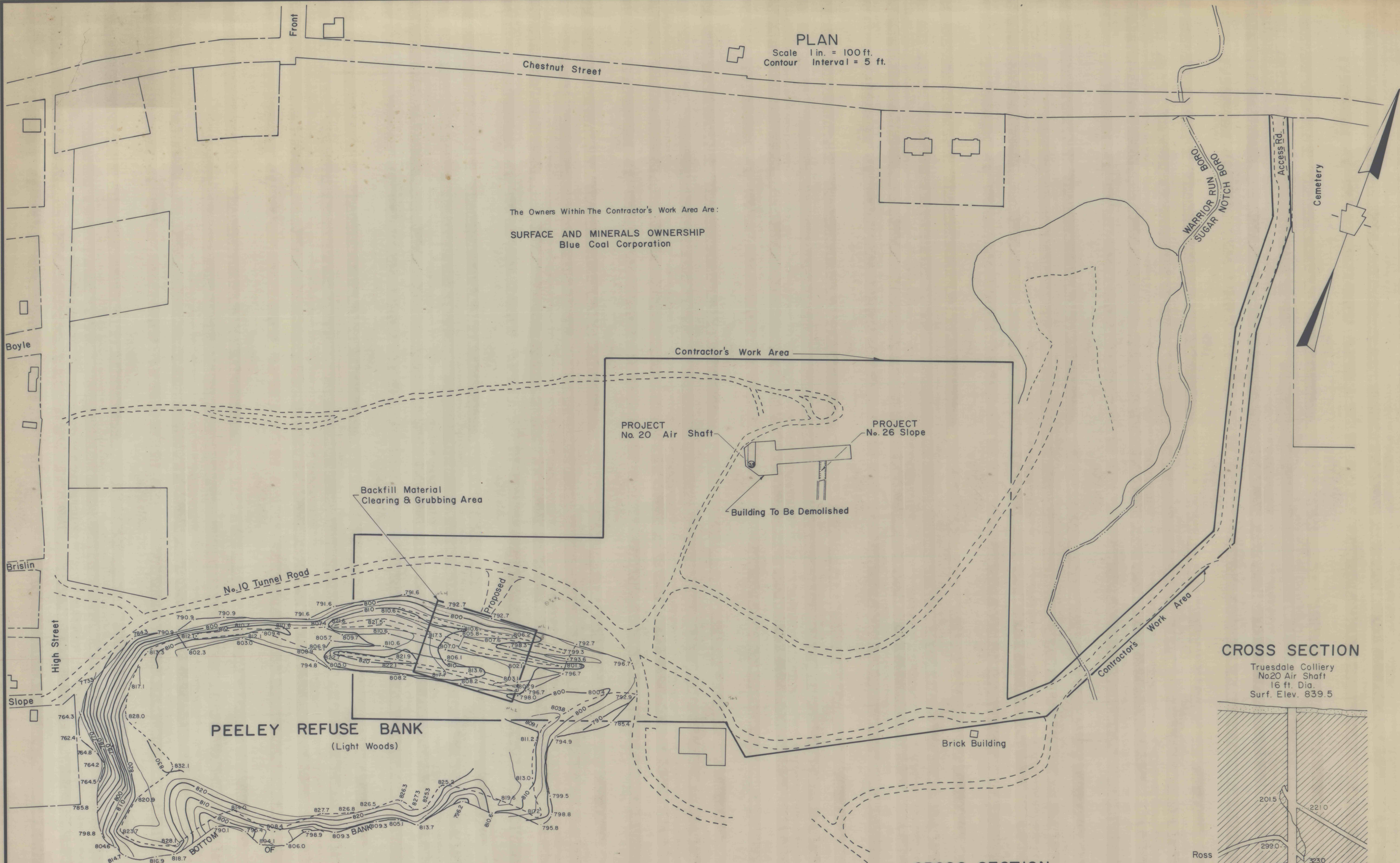
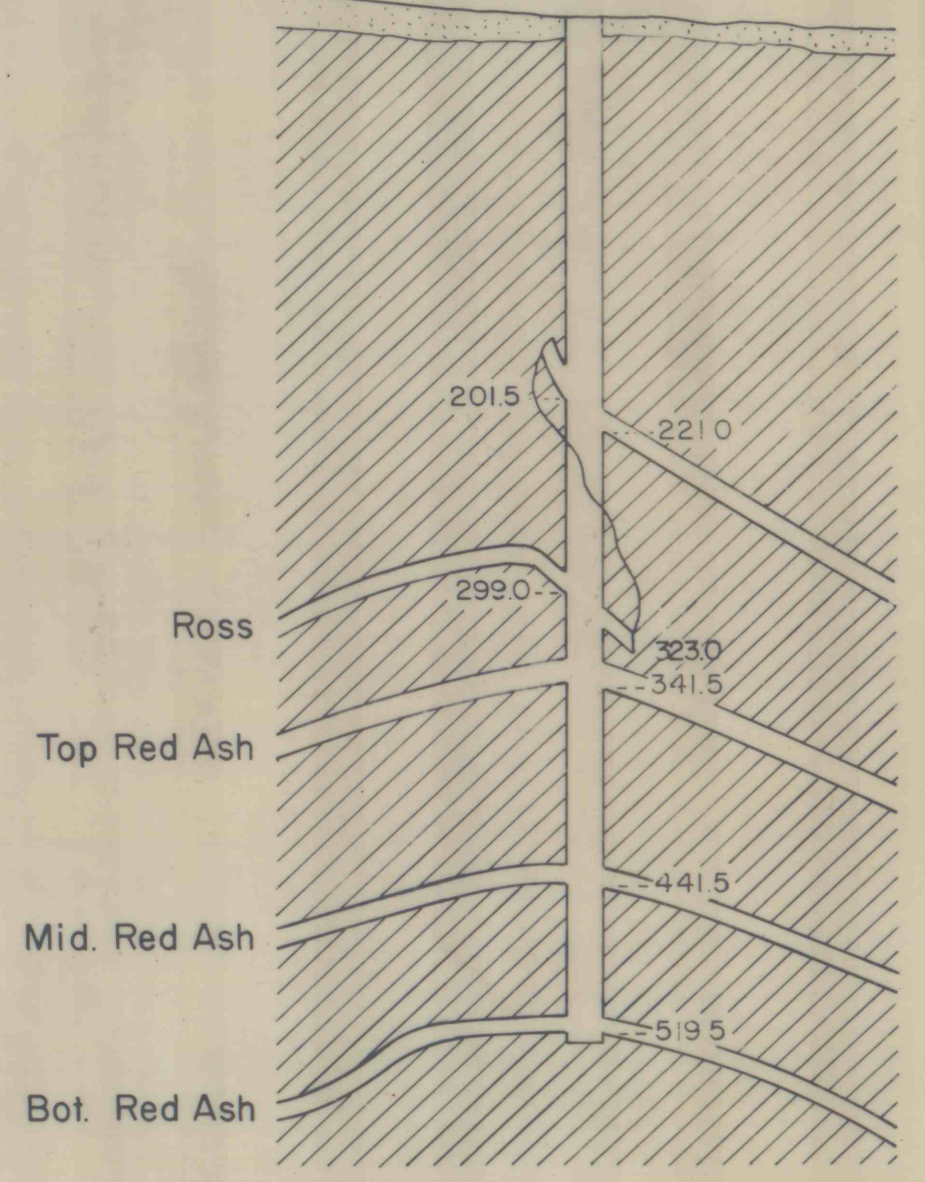


**PLAN**  
 Scale 1 in. = 100 ft.  
 Contour Interval = 5 ft.



**CROSS SECTION**

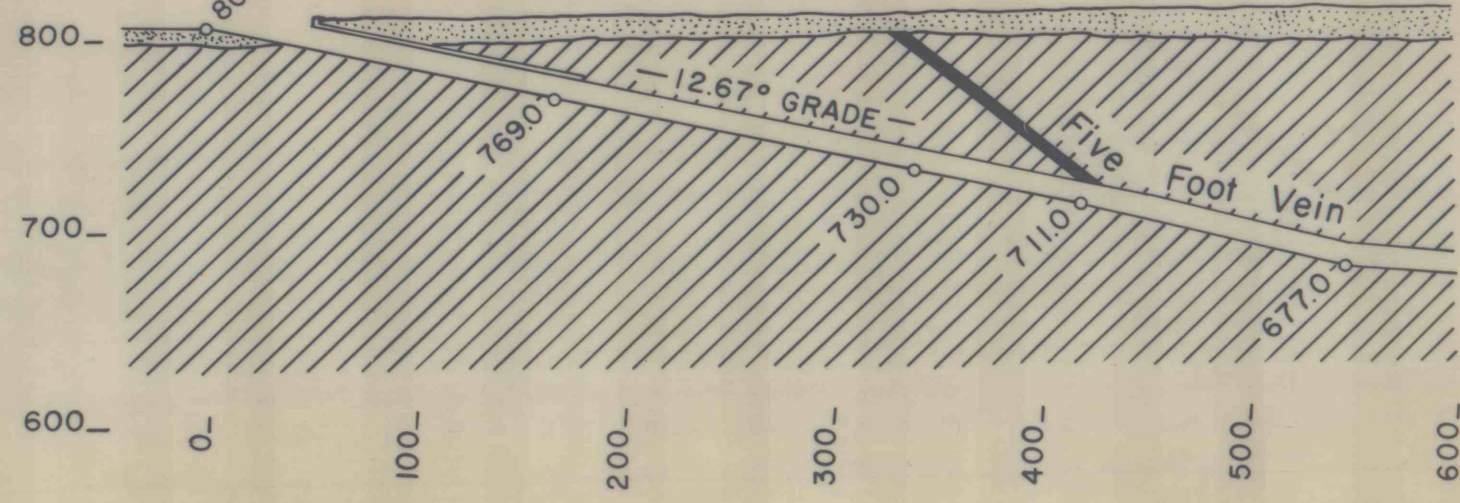
Truesdale Colliery  
 No. 20 Air Shaft  
 16 ft. Dia.  
 Surf. Elev. 839.5



Scale: Horiz. lin. = 100 ft.  
 Vert. lin. = 100 ft.

**CROSS SECTION**

Truesdale Colliery  
 No. 26 Slope

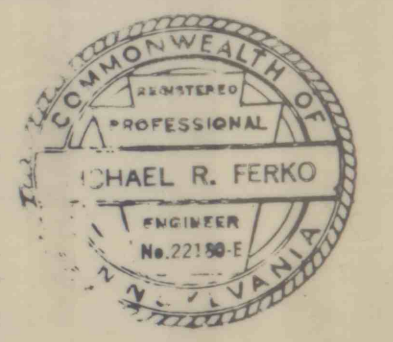


NO.	DATE	REVISION	APPR.

SUBMITTED  
*Robert J. Stipanovich, P.E.*  
 DESIGNER

APPROVED  
*Michael R. Ferko*  
 ACTING DISTRICT ENGINEER, WILKES-BARRE

APPROVED  
 DIRECTOR, BUREAU OF RESOURCES PROGRAMMING



COMMONWEALTH OF PENNSYLVANIA  
 DEPARTMENT OF ENVIRONMENTAL RESOURCES  
 OFFICE OF RESOURCES MANAGEMENT

PROJECT NO. OSM 40 (045-80) 101.1  
**BACKFILLING THE ABANDONED  
 No. 20 AIR SHAFT &  
 No. 26 SLOPE**  
**TRUESDALE COLLIERY**  
 WARRIOR RUN BORO, LUZERNE CO., PA.

**CROSS SECTION, REFUSE BANK,  
 PLAN, LOCATION & VICINITY MAPS**

DRAWN BY  
 R. J. S.

CHECKED BY  
*[Signature]*

DATE  
 4/30/81

SCALE  
 As Shown

DRAWING NO.  
 1 of 1