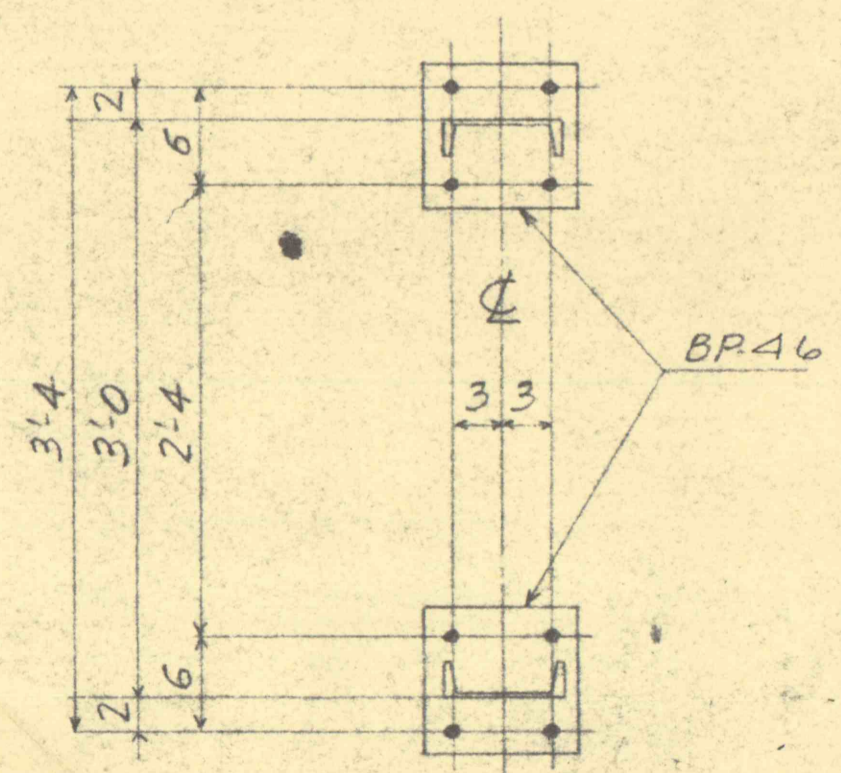


STANDARD 3'0" WIDE CHANNEL COLUMN CC-1X



SECTION B-B
TYPE II BASE

HOLES 1/16" UNLESS NOTED
MATERIAL H. D. GALV.
* DIRECTION MARK
SUFFIX MARKS WITH 956
SHIP ASSEMBLED

MATERIAL FOR ONE COLUMN CC-1X

No.	SEC.	SIZE	LENGTH FT. INS.	MARK
1	L	7 @ 9.8	26 6 3/4	LCB-7X
1	L	do	26 6 3/4	LCB-7XX
2	PL.	9 x 1/2	9	BP-46
		1/4" WELD	3 10	
13	L	1 3/4 x 1 1/4 x 3/16	3 5 1/2	DA-15
1	L	1 3/4 x 1 1/4 x 3/16	2 6 3/4	TA-5
13	L	4 x 3 x 1/4	5	CA-4
2	PL.	4 1/2 x 1 1/4 (BENT)	1 0	SE-3
2	PL.	4 x 1 1/4	5 1/4	PE-B
		1/8" WELD	1 9	
66	BOLTS	5/8" φ x 1 1/4 HH-HV-STD. THD.		
12	"	5/8" φ x 1 1/2 "		

FOR DETAILS OF MEMBERS SEE DWG. 5890-2

W.E. CORP. ORDER No. IN-88750-2 YSE IN-88751ZY

DESCRIPTION	DW. CK.
A WAS SHEET NO. 3	R.G.B.
2) WAS 15'1 3/16 - LCB-7X	11-26
REVISIONS	

THIS DRAWING IS THE PROPERTY OF THE DRESSER-IDECO COMPANY. THE INFORMATION HEREIN IS NOT TO BE USED EXCEPT AS AUTHORIZED BY THIS COMPANY. TRACINGS OR COPIES ARE NOT TO BE MADE WITHOUT PERMISSION.

DRESSER-IDECO COMPANY
ONE OF THE DRESSER INDUSTRIES
COLUMBUS 8, OHIO

STANDARD 3'0" WIDE CHANNEL COLUMN
23 KV OUTDOOR SUBSTATION
PEERLESS PUMP DIVISION
PENNA. COAL CO., WILKES BARRE, PENNA.
WESTINGHOUSE ELEC. CO., E. PITTSBURGH, PA.

ORDER NO.	10956 & 10957			
NAME	DRAWN	CHECKED	APPROVED	SCALE
DATE	HLK	BRIDHEAD		
DRAWING NO.	102557	11-14-57		
	10956	3 A	3	