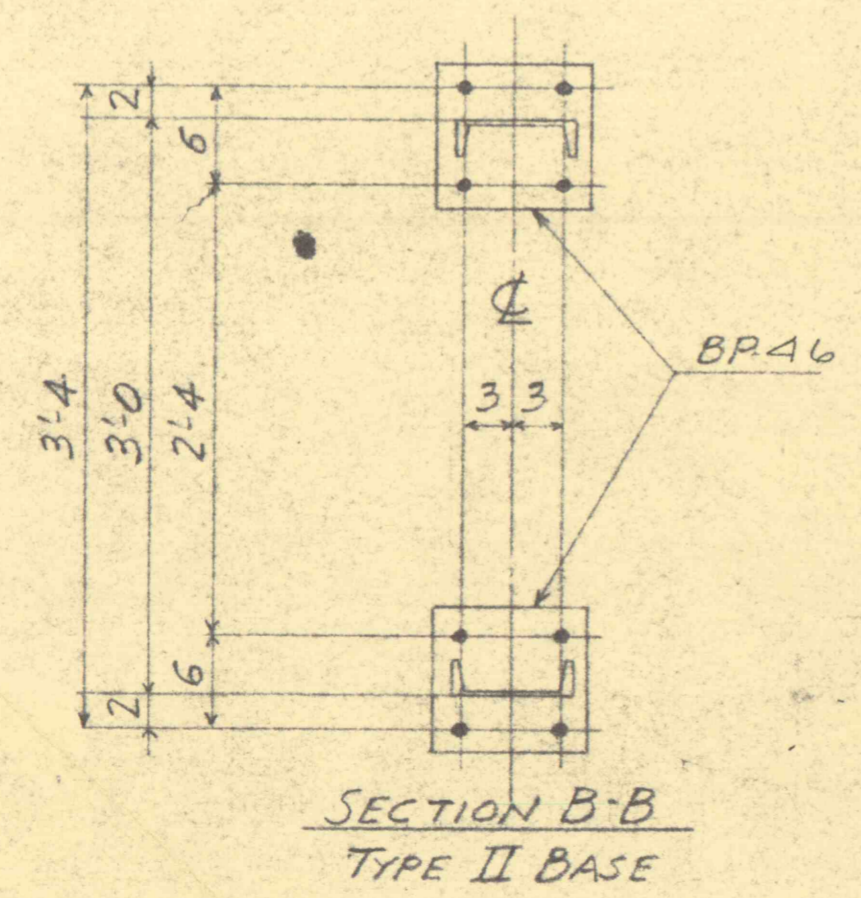


STANDARD 3'-0" WIDE CHANNEL COLUMN CC-1X



HOLES 1 1/2" UNLESS NOTED  
 MAT'L H. D. GALV.  
 \* DIRECTION MARK  
 SUFFIX MARKS WITH 956  
 SHIP ASSEMBLED

MATERIAL FOR ONE COLUMN CC-1X

No.	SEC.	SIZE	LENGTH FT. INS.	MARK
1	L	7@9.8	26 6 3/4	LCB-7X
1	L	do	26 6 3/4	LCB-7XX
2	PL.	9x1/2	9	BP-46
		1/4" WELD	3 10	
13	L	1 1/2 x 1 1/4 x 3/16	3 5 1/2	DA-15
1	L	1 1/2 x 1 1/4 x 3/16	2 6 3/4	TA-5
13	L	4x3x1/4	5	CA-4
2	PL.	1 1/2 x 1 1/4 (BENT)	1 0	SE-3
2	PL.	4x1/4	5 1/4	PE-B
		1/8" WELD	1 9	
66	BOLTS	5/8" P x 1 1/4 HH-HH-STD. THD.		
12	"	5/8" P x 1/2 "		

FOR DETAILS OF MEMBERS SEE DWG. SB90-2

W.E. CORP. ORDER NO. IN-88750-ZY5 IN-88751ZY

DESCRIPTION  
 DW. CK.  
 R.F.B.  
 11-26  
 A WAS SHEET NO. 3  
 01 WAS 15-1 3/4 - LCB-7X

THIS DRAWING IS THE PROPERTY OF THE DRESSER-IDECO COMPANY. THE INFORMATION HEREIN IS NOT TO BE USED EXCEPT AS AUTHORIZED BY THIS COMPANY. TRACINGS OR COPIES ARE NOT TO BE MADE WITHOUT PERMISSION.

**DRESSER-IDECO COMPANY**  
 ONE OF THE DRESSER INDUSTRIES  
 COLUMBUS 8, OHIO

STANDARD 3'-0" WIDE CHANNEL COLUMN  
 23 KV OUTDOOR SUBSTATION  
 PEERLESS PUMP DIVISION  
 PENNA. COAL CO., WILKES BARRE, PENNA.  
 WESTINGHOUSE ELEC. CO., E. PITTSBURGH, PA.

ORDER NO.		10956 & 10957	
NAME	DRAWN	CHECKED	APPROVED
HLK	BRUDHEAD		
DATE	10-25-57	11-14-57	
DRAWING NO.	10956	3A	3