

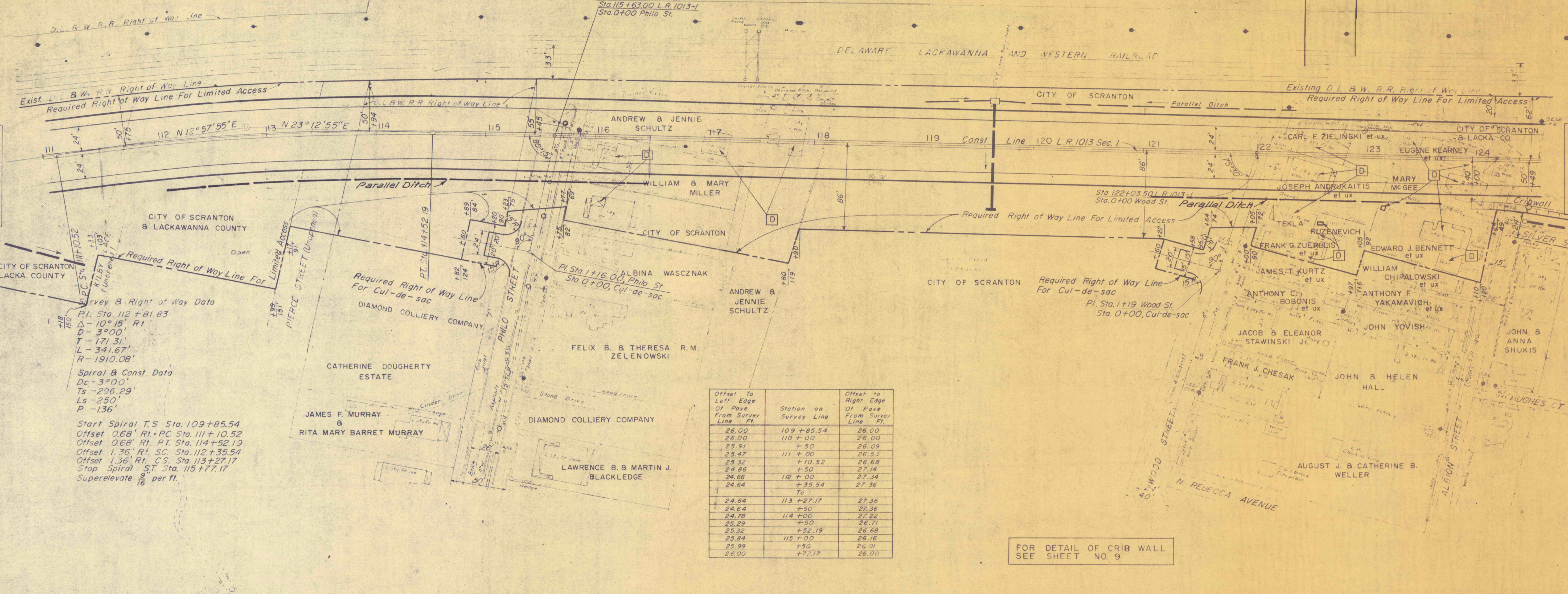
B.M.
Spike in Side Telephone Pole
116.5' Lt. Sta. 119+86
Elev. 864.77

DISTRICT	COUNTY	ROUTE	SEC.
4-0	LACKAWANNA	1013	1

City of Scranton

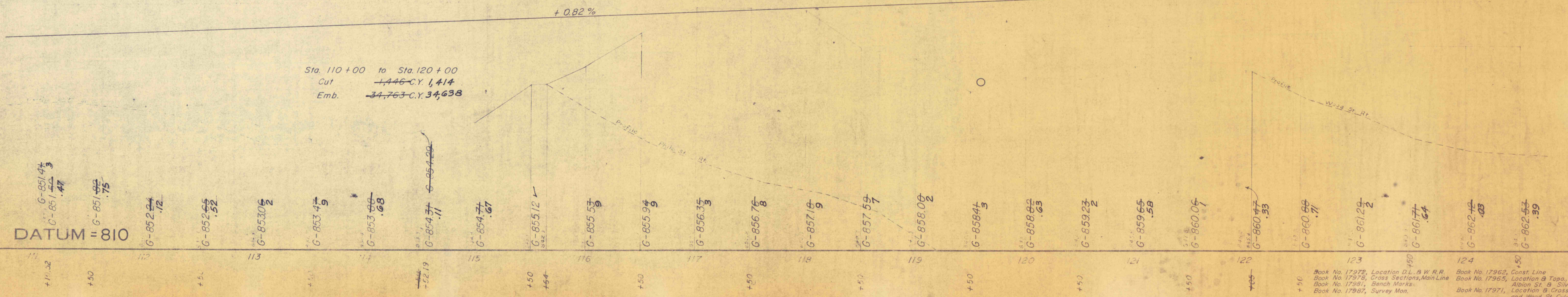
REQUIRED LIS

- Sta. 115+70, Lt.
3 C.Y. Cl. 2 Exc. Remove Exist. Mat'l.
0.1 C.Y. Cl. B Conc. Plug Pipe
Remove Castings
- Sta. 115+55, Rt.
1 Type "A" M'hole
- Sta. 115+50 to Sta. 122+40, Lt.
307 C.Y. Cl. 1 Exc. -Widened Cut
14 C.Y. Cl. 2 Exc. Parallel Ditch
18" Bottom
- Sta. 119+60
106 L.F. 36" A.C.C.M. Pipe, Fully Coated
1 Type 4 Ft. Inlet, Lt.
- 1.1
103
14 C.Y. Cl. B Conc. Type D Edw., Rt.
10 C.Y. Cl. 2 Exc. Pipe & Edw.
- Sta. 121+00 to Sta. 123+70 Rt.
26 C.Y. Cl. 2 Exc. Parallel Ditch
- Sta. 122+40 to Sta. 123+60 Lt.
16 C.Y. Emb. Pocket Fill
- Sta. 123+70 to Sta. 125+40 Lt.
296 C.Y. Cl. 1 Exc. -Widened Cut
- Sta. 123+70 to Sta. 125+55 Lt.
9 C.Y. Cl. 2 Exc. Parallel Ditch
18" Bottom
- Sta. 124+00 to Sta. 125+38.44, Rt.
1480 S.F. Metal Cribbing
15 C.Y. Cl. 1 Exc.
- See Special Requirements in the Proposal
See Detail Sheet No. 9
- Continued From Sheet No. 32
COURT ST. Reloc.
- Sta. 4+45 to Sta. 6+24, Lt. & Rt.
169 S.Y. Cem. Conc. Sidewalk
34 C.Y. Cl. 1 Exc. -Sidewalk
78 C.Y. Emb.
- Sta. 5+50 (Storm Sewer Outlet)
1 Type A Manhole &
136 L.F. 42" A.C.C.M. Pipe
466 C.Y. Cl. 2 Exc. Pipe
- Sta. 5+60 to Sta. 6+50, Rt.
74 C.Y. Cl. 1 Exc. Pavt. Removal
- Sta. 6+60, Rt. Court Street Conn.
55 S.Y. Bit. Surf. Crse. 10-2, 2 1/2" Depth
56 S.Y. Cr. Aggr. Base Crse., Type A, 8" Depth
56 S.Y. Subgrade
56 C.Y. Cl. 1 Exc.
- Sta. 8+95, Drive Rt.
6 C.Y. Cl. 1 Exc.
3 C.Y. Set. Mat'l. Surf., 4" Depth
W=10.0' L=15.0'
- Sta. 9+25 to Sta. 9+61
64 L.F. Pl. Cem. Conc. Curb-Type B
- Sta. 10+40, Drive Rt.
2 C.Y. Cl. 1 Exc.
3 C.Y. Set. Mat'l. Surf., 4" Depth
W=10.0' L=13.0'
- 13 S.Y. 2 1/2" Bit. Surf. Course 10-2.
- Sta. 10+78, Drive Rt.
75 S.Y. 2 1/2" Bit. Surf. Course 10-2
1 C.Y. Set. Mat'l. Surf., 4" Depth
1 C.Y. Cl. 1 Exc.
W=10.0' L=7.0
- Philo St. Cul-de-sac
- Sta. 1+16
82 S.Y. Bit. Surf. Crse. 10-2, 2 1/2" Depth
87 S.Y. Cr. Aggr. Base Crse. Type A, 8" Depth
87 S.Y. Subgrade
87 C.Y. Cl. 1 Exc.
3 C.Y. Embankment
W=24' L=27'
- Wood St. Cul-de-sac
- Sta. 1+19
34 C.Y. Cl. 1 Exc.
11 C.Y. Set. Mat'l. Surf., 6" Depth
W=20' L=30'
- COURT ST.
Sta. 8+76 to Sta. 9+78-Drive Rt.
279 S.Y. Subgrade
279 S.Y. 6" Cr. Aggr. Base Crse. Type A
281 S.Y. 2 1/2" Bit. Surf. Crse. 10-2
- Sta. 9+97-Drive Rt.
17 S.Y. Subgrade
18 S.Y. 6" Cr. Aggr. Base Crse. Type A
18 S.Y. 2 1/2" Bit. Surf. Crse. 10-2



Offset To Left Edge Of Pavement From Survey Line - Ft.	Station on Survey Line	Offset to Right Edge Of Pavement From Survey Line - Ft.
26.00	109+85.54	26.00
26.00	110+00	26.00
25.91	+50	26.09
25.47	111+00	26.53
25.32	+10.52	26.68
24.86	+50	27.14
24.66	112+00	27.34
24.64	+35.54	27.36
	To	
24.64	113+27.17	27.36
24.64	+50	27.36
24.78	114+00	27.22
25.29	+50	26.71
25.32	+52.19	26.68
25.84	115+00	26.16
25.99	+50	26.01
26.00	+77.17	26.00

FOR DETAIL OF CRIB WALL SEE SHEET NO. 9



Sta. 110+00 to Sta. 120+00
Cut 1,446 C.Y. 1,414
Emb. 34,763 C.Y. 34,638

- G-851.47
- G-851.44
- G-851.47
- G-851.75
- G-852.24
- G-852.12
- G-852.52
- G-853.02
- G-853.49
- G-853.88
- G-853.88
- G-854.11
- G-854.71
- G-855.12
- G-855.53
- G-855.94
- G-856.33
- G-856.76
- G-857.16
- G-857.57
- G-858.02
- G-858.43
- G-858.82
- G-859.23
- G-859.65
- G-860.06
- G-860.47
- G-860.88
- G-861.29
- G-861.71
- G-862.12
- G-862.53

DATUM = 810

Book No. 17972, Location D.L. & W.R.R. Cross Sections, Main Line
Book No. 17978, Cross Sections, Main Line
Book No. 17981, Bench Marks
Book No. 17987, Survey Map.

Book No. 17962, Const. Line
Book No. 17965, Location B Topo, Philo St., Wood St., Albin St. & Silver St.
Book No. 17971, Location B Cross Sections, Philo St. and Wood St. Cul-de-Sacs.