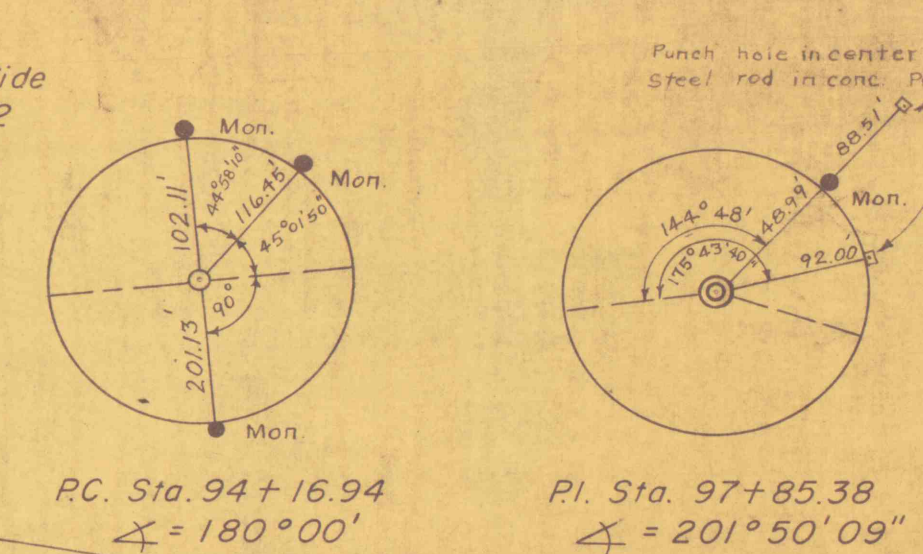


L.R. 35055 (N. MAIN AVENUE) INTERCHANGE

BM
Cut on Ledge Rock, West Side
D.L. & W. R.R., 130' Lt. Sta. 98+12
Elev. 834.38'

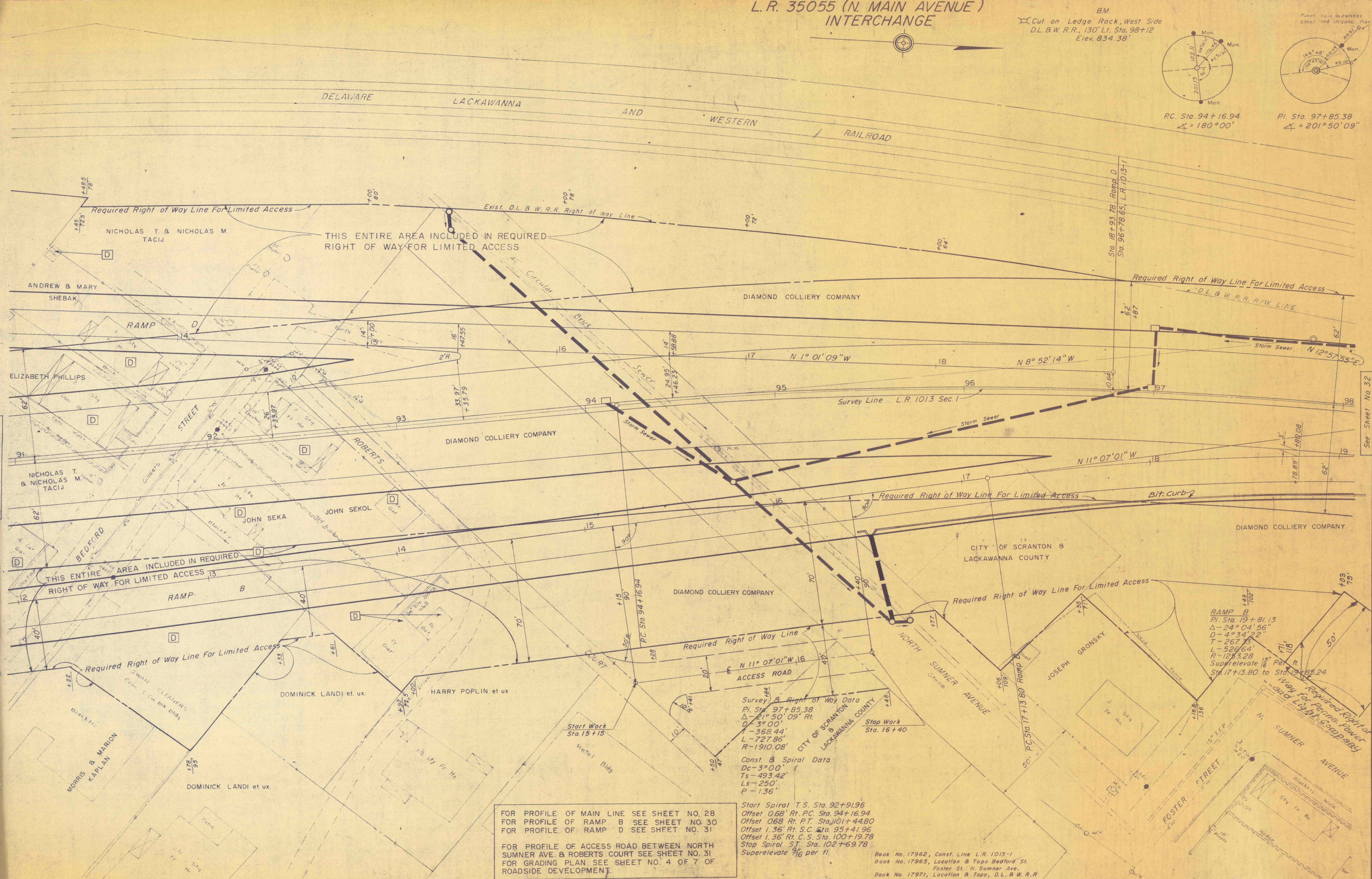


DISTRICT	COUNTY	ROUTE	SEC.
4-0	LACKAWANNA	1013	1

City of Scranton

REQUIRED LIS

- 77 Sta. 94+10 to Sta. 94+75, Rt. 18" L.F. 18" R.C.C. Pipe
- 37 1 Type J Inlet, & 38 C.Y. Cl. 2 Exc. - Pipe
- 225 Sta. 94+75, Rt. to Sta. 97+00, & L Storm Sewer
- 110 220 L.F. 18" R.C.C. Pipe or Extra St. V.C. Pipe or A.C.C.M. Pipe
- 333 213 C.Y. Cl. 2 Exc. - Pipe
- 3 Sta. 94+30 336 L.F. 42" Vitrified Clay Lined R.C. Pipe, Extra Six
- 1 2 Type "A" M'holes, Rt. 1 Type "C" M'hole, Rt. 2 Type "B" M'holes, Lt.
- 690 336 C.Y. Cl. 2 Exc. - Pipe See Special Requirements in the Propos.
- 34 Sta. 97+00 36 L.F. 18" R.C.C. Pipe
- 16 1 Type 4 Ft. Inlet, Lt. 1 Type J Inlet, & 14 C.Y. Cl. 2 Exc. - Pipe
- 443 Sta. 97+00 to Sta. 101+45, Lt. Storm Sewer
- 149 444 L.F. 18" R.C.C. Pipe or Extra St. V.C. Pipe or A.C.C.M. Pipe
- 459 177 C.Y. Cl. 2 Exc. - Pipe
- Elim. 9 No Summer Ave. Access Road to Roberts Court
- 50 Sta. 15+15 to Sta. 16+40 70 C.Y. Set. Matl. Surf., 6" Depth 13 C.Y. Cl. 1 Exc. 56 C.Y. Emb.
- Ramp B Sta. 16+40 Ramp B to Sta. 103+50 N.N.B. 792 L.F. Extruded Bit. Conc. Curb Extra Item (f)
- Sta. 16+45 - Ramp B to Sta. 103+83 942 S.Y. Shoulder Treatment Extra Item (9)



Survey & Right of Way Data
 PI Sta. 97+85.38
 Δ - 2° 50' 09" Rt.
 D - 3° 00' 09"
 T - 368.44'
 L - 727.86'
 R - 1910.08'

Const. & Spiral Data
 D_c - 3° 00'
 T_s - 493.42'
 L_s - 250'
 P - 1.36'

Start Spiral T.S. Sta. 92+91.96
 Offset 0.68' Rt. P.C. Sta. 94+16.94
 Offset 0.68' Rt. P.T. Sta. 101+44.80
 Offset 1.36' Rt. S.C. Sta. 95+41.96
 Offset 1.36' Rt. C.S. Sta. 100+19.78
 Stop Spiral S.T. Sta. 102+69.78
 Superelevate $\frac{3}{16}$ per ft.

FOR PROFILE OF MAIN LINE SEE SHEET NO. 28
 FOR PROFILE OF RAMP B SEE SHEET NO. 30
 FOR PROFILE OF RAMP D SEE SHEET NO. 31

FOR PROFILE OF ACCESS ROAD BETWEEN NORTH SUMMER AVE. & ROBERTS COURT SEE SHEET NO. 31
 FOR GRADING PLAN SEE SHEET NO. 4 OF 7 OF ROADSIDE DEVELOPMENT.

Book No. 17962, Const. Line L.R. 1013-1
 Book No. 17965, Location & Topo Bedford St. Foster St. N. Summer Ave.
 Book No. 17971, Location & Topo, D.L. & W. R.R.
 Book No. 17977, Cross Sections Main Line
 Book No. 17981, Bench Marks
 Book No. 17982, Line & Cross Sections, L.R. 35055 Interchange
 Book No. 17987, Survey Man.

See Sheet No. 24

See Sheet No. 32