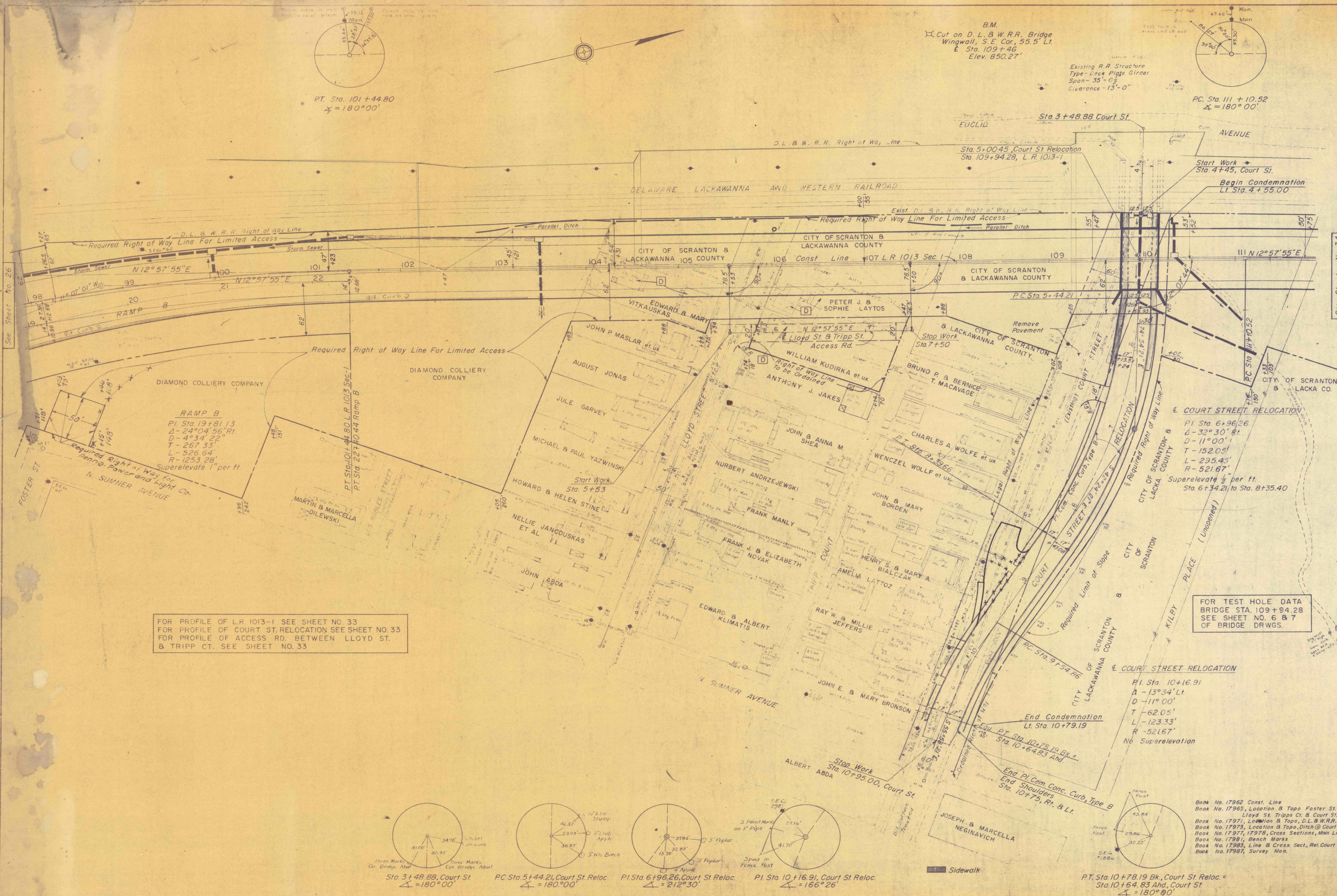


City of Scranton

REQUIRED LIST

- 28 Sta. 100 + 00, &  
32 L.F. 18" R.C.C. Pipe (12)  
1 Type J Inlet
- 16 Sta. 101 + 45, Lt.  
15 C.Y. Cl. 2 Exc. - Pipe
- 2.4 Sta. 101 + 45, Lt.  
2.5 C.Y. Cl. B Conc. - Type A Edw., Lt.  
8 C.Y. Cl. 2 Exc. - Edw.  
2 C.Y. Cl. 2 Exc. - Inlet Ditch
- 103 + 10
- 68 Sta. 101 + 60 to Sta. 102 + 00, Lt.  
25 C.Y. Emb. Pocket Fill
- 105 + 30
- 85 Sta. 102 + 80 to Sta. 103 + 55, Lt.  
266 C.Y. Cl. 2 Exc. - Parallel Ditch  
18" Bottom
- Elim. Sta. 103 + 50  
76 L.F. 18" R.C.C. Pipe (37)  
1 Type H Inlet, Lt.
- 23 Sta. 103 + 50  
45 C.Y. Cl. 2 Exc. - Pipe  
1 C.Y. Cl. 2 Exc. - Outlet Ditch
- Sta. 106 + 00, Lt.  
6 C.Y. Cl. 2 Exc. - Remove Exist. Whole  
0.1 C.Y. Cl. B Conc. Plug Pipe  
Remove Castings
- 146 Sta. 108 + 75 to Sta. 109 + 70, Lt.  
84 C.Y. Emb. - Pocket Fill
- 101 + 47 to Sta. 103 + 50 Lt.
- 203 L.F. 18" R.C.C. Pipe
- 53 L.F. Cl. 2 Exc. Pipe
- 176 Sta. 110 + 40 to Sta. 116 + 25, Lt.  
66 C.Y. Emb. Pocket Fill  
Sta. 106 + 00 to Sta. 103 + 50 Lt.  
100 C.Y. Cl. 2 Exc. - Parallel Ditch
- 134 Sta. 110 + 35  
144 L.F. 18" R.C.C. Pipe (54)  
1 Type J Inlet, &  
16 C.Y. Cl. B Conc. Type D-E Edw., Lt.
- 1.1 Sta. 110 + 35  
74 C.Y. Cl. 2 Exc. - Edw. & Edw.  
Cant. Sheet No. 33
- 69 COURT ST. RELOC.
- 2329 Sta. 4 + 45.00 to Sta. 10 + 95.00  
2259 S.Y. Bit. Surf. Crse. 10-2, 2 1/2" Depth
- 2362 S.Y. Cr. Agr. Base Crse., Type A, 10" Depth
- 2368 S.Y. Subgrade
- 4489 4066 C.Y. Cl. 1 Exc.
- 225 184 L.F. Shoulder Rt +  
27 C.Y. Emb.
- 14 +50
- 28 Sta. 4 + 45  
16 L.F. 30" R.C.C. Pipe (6)  
2 Type 4 Ft. Spec. Inlets, Lt. & Rt.  
1 Type A Manhole, &  
5 C.Y. Cl. 2 Exc. - Pipe
- 211 Sta. 4 + 45 to Sta. 5 + 50, &  
Storm Sewer  
100 L.F. 42" R.C.C. Pipe or Extra Str.  
46 Pipe or A.C.C.M. Pipe (17)
- 211 227 C.Y. Cl. 2 Exc. Pipe
- 1269 Sta. 4 + 45 to Sta. 10 + 75, Lt. & Rt.  
4266 L.F. Pl. Cem. Conc. Curb, Type B
- Cont on Sheet No. 34
- Sta. 109 + 94.28  
Prestressed Concrete Bridge  
Span 35.02' Clear Min. Clear - 14.55'  
Skew - 87° 52' 16" Lt. Cl. Rdwy. - 68'  
795 C.Y. Cl. 3 Exc.
- 728 32 C.Y. Stone B'fill for Structure
- 781.6 794 C.Y. Cl. B Conc.
- 44,247 44536 lb. Reinf. Bars
- 227 228 L.F. 6" Perf. 16" or Porous C.C. Pipe
- \$22000.00 Lump Sum - Item
- Prestressed Concrete Bridge Superstructure
- \$2800.00 Lump Sum - Item
- 128 P53 Steel Beam Test Pile  
4 Piles each 45 ft. long
- 2241 4400 L.F. 128 P53 Steel Beam Piles  
5-3756 Appr. 11-17-59  
5-1614-B 5-23-58  
5-3361 3-2-59  
SD-13 11-1-61
- 212 C.Y. Cl. 1 Exc. (Extra Item #2)



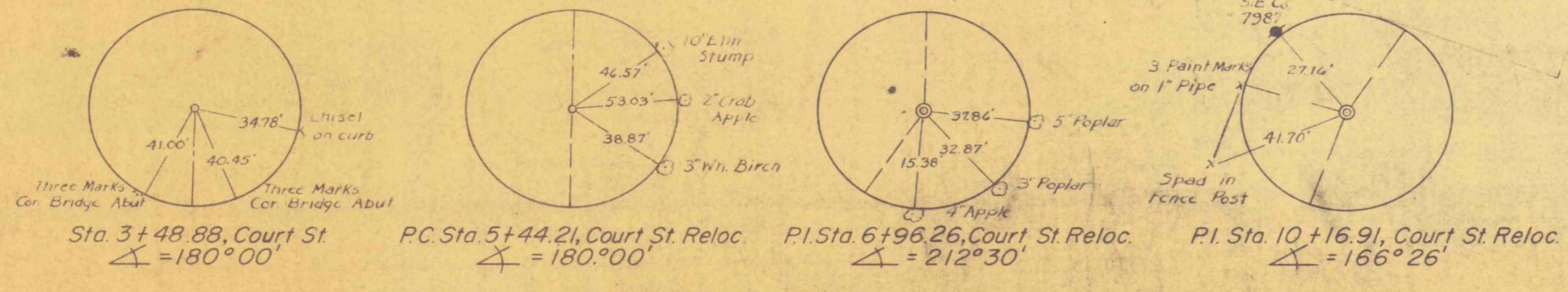
PT. Sta. 101 + 44.80  
∠ = 180° 00'

B.M.  
Cut on D. L. & W. R.R. Bridge  
Wingwall, S.E. Cor., 55.5' Lt.  
Sta. 109 + 46  
Elev. 850.27'

PC. Sta. 111 + 10.52  
∠ = 180° 00'

FOR PROFILE OF L.R. 1013-1 SEE SHEET NO. 33  
FOR PROFILE OF COURT ST. RELOCATION SEE SHEET NO. 33  
FOR PROFILE OF ACCESS RD. BETWEEN LLOYD ST.  
& TRIPP CT. SEE SHEET NO. 33

FOR TEST HOLE DATA  
BRIDGE STA. 109 + 94.28  
SEE SHEET NO. 6 & 7  
OF BRIDGE DRWGS.



Book No. 17962 Const. Line  
Book No. 17965, Location & Topo Foster St.  
Lloyd St, Tripps Ct. & Court St.  
Book No. 17971, Location & Topo, D.L. & W.R.R.  
Book No. 17973, Location & Topo, Ditch @ Court St.  
Book No. 17977, 17978, Cross Sections, Main Line  
Book No. 17981, Bench Marks  
Book No. 17983, Line & Cross Sect., Rel. Court St.  
Book No. 17987, Survey Mon.