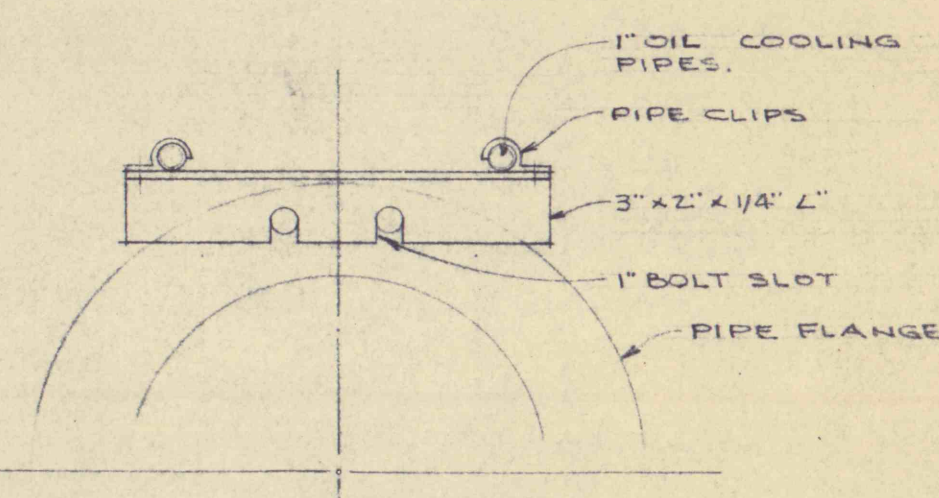
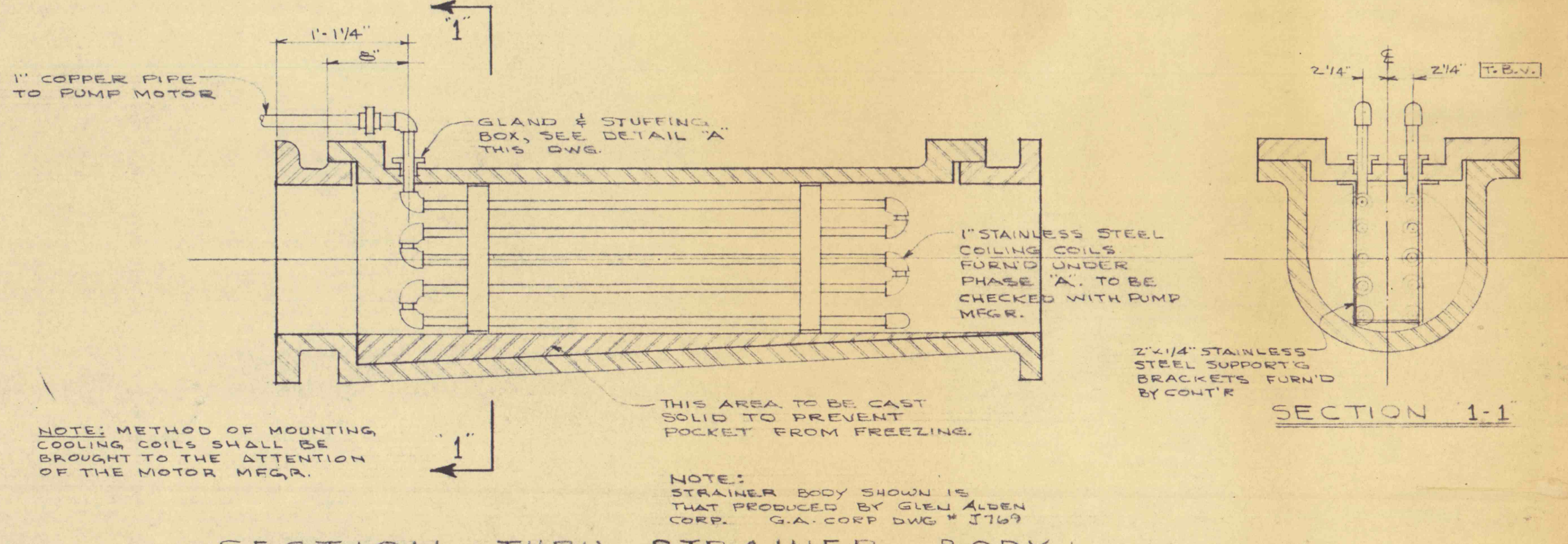


SECTION "A-A"
SCALE 1/4" = 1'-0"



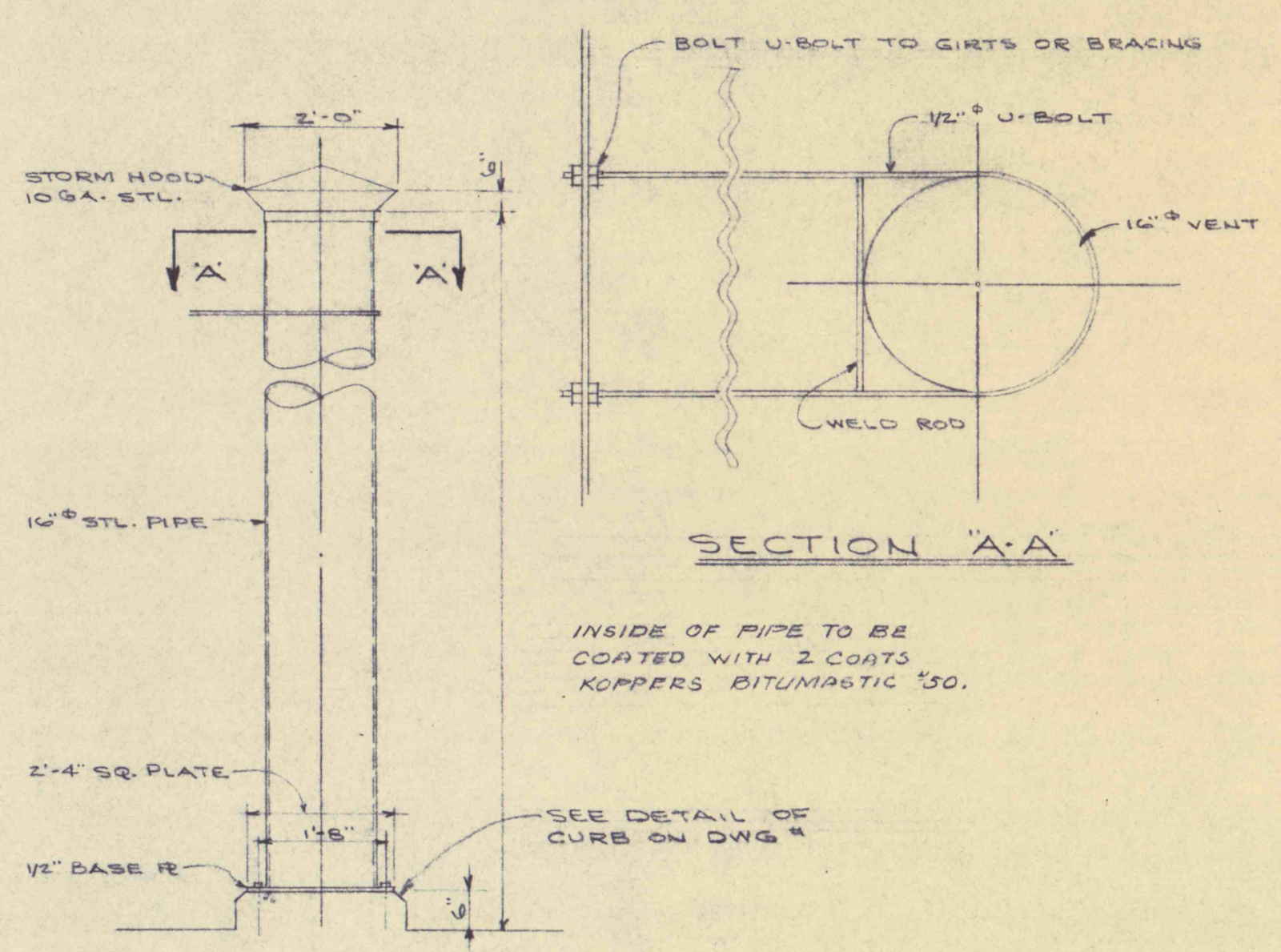
DETAIL OF OIL COOLING PIPE SUPPORT



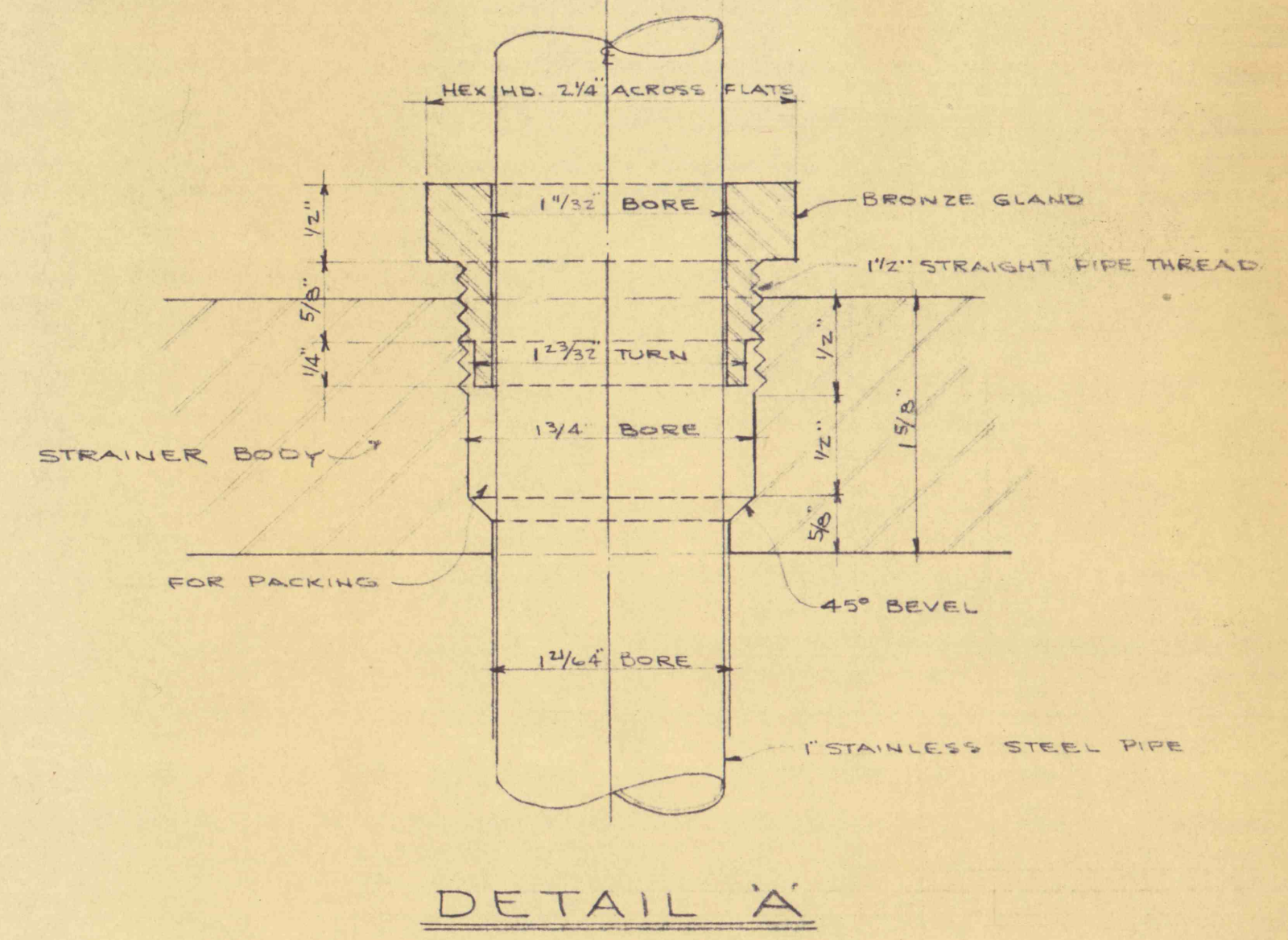
NOTE: METHOD OF MOUNTING COOLING COILS SHALL BE BROUGHT TO THE ATTENTION OF THE MOTOR MFG.

NOTE: STRAINER BODY SHOWN IS THAT PRODUCED BY GLEN ALDEN CORP. G.A. CORP DWG # 3769

SECTION THRU STRAINER BODY



DETAIL OF VENT PIPE
SCALE 1/2" = 1'-0"



DETAIL A

DISCHARGE PIPING - PLANS, ELEVATIONS, DETAILS

REVISIONS		FLOOD CONTROL PROJECT NO 21 PHASE B PA DEPT. OF MINES & MINERALS INDUSTRIES	
		GLEN ALDEN CORPORATION STANTON COLL. NO. 7 SHAFT	
		ROUSHEY AND SMITH	
SCALE NOTED	ENGINEERS AND CONSULTANTS	JOB 641	
DATE 1-30-59	189 MARKET ST KINGSTON, PA.	Dwg. No. 9	
BY ETK	METROPOLITAN WORKS BARRÉ		

