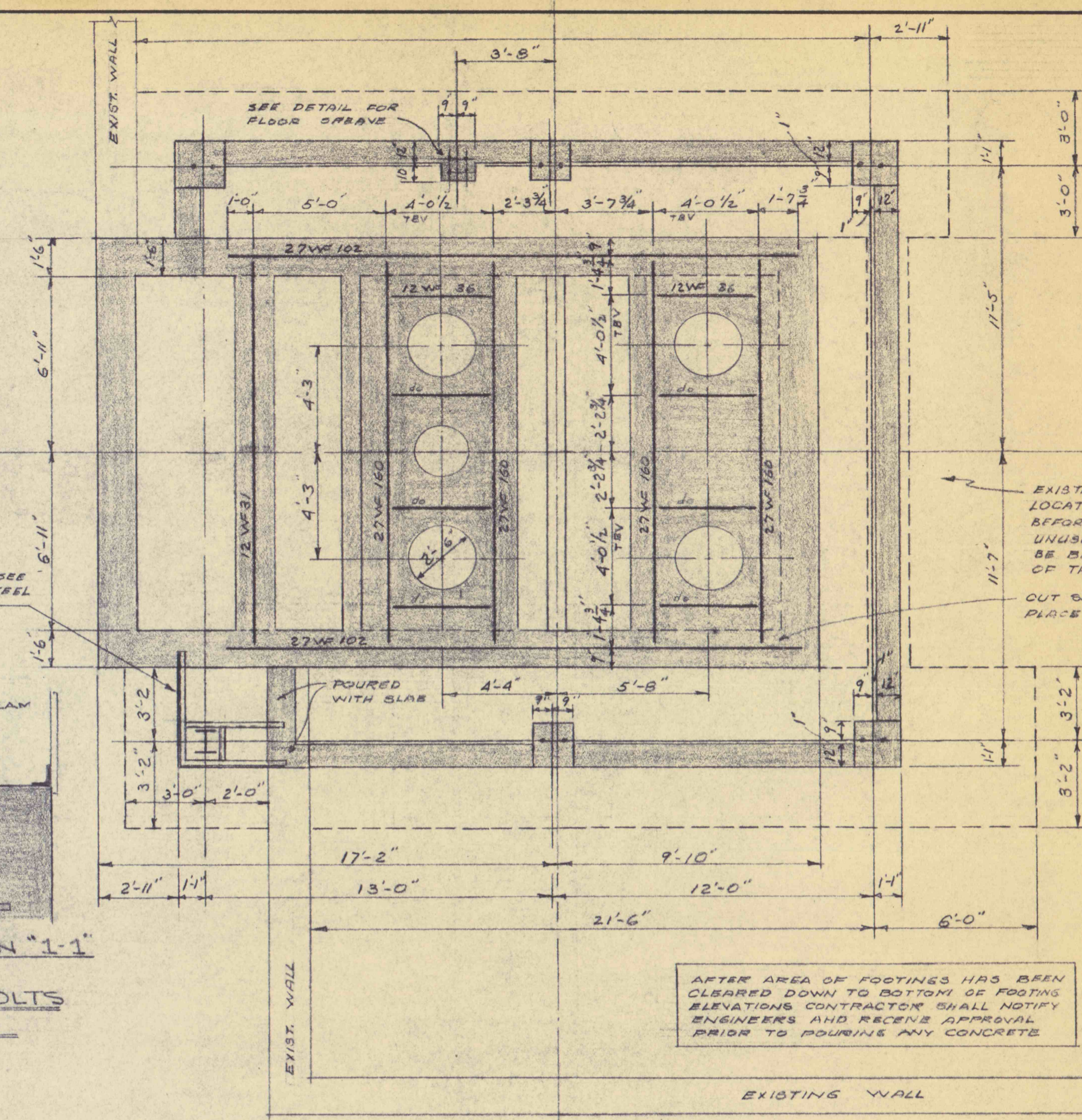
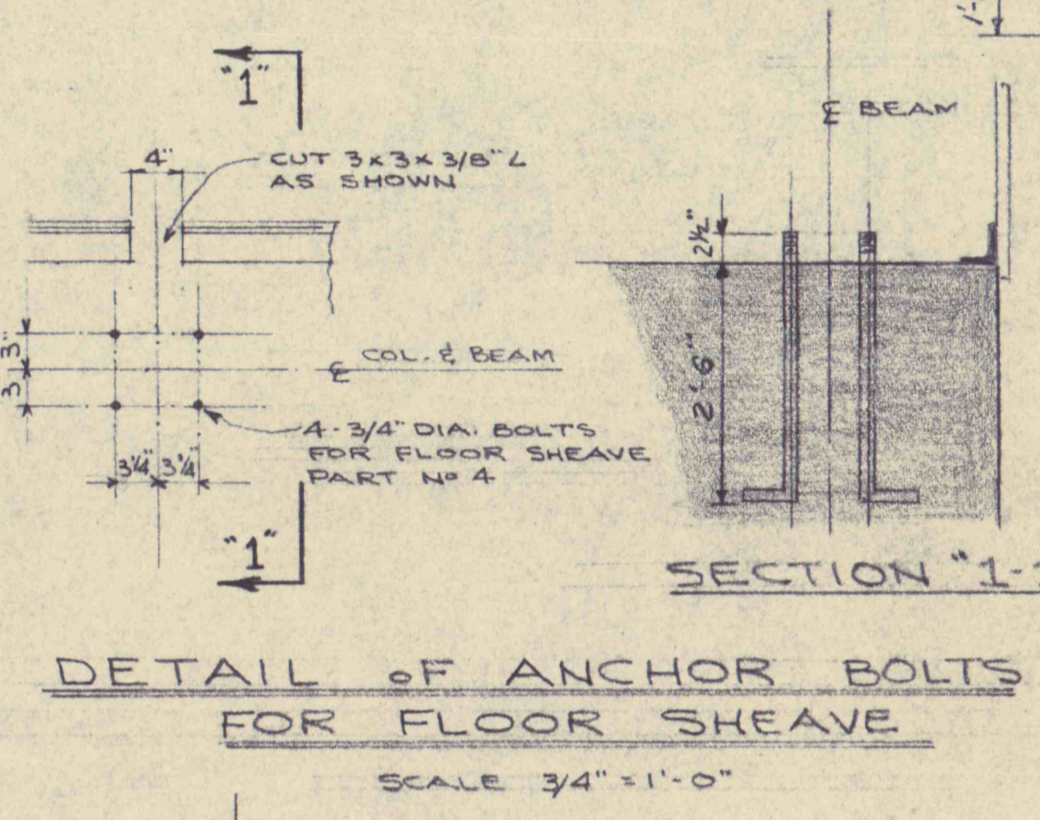


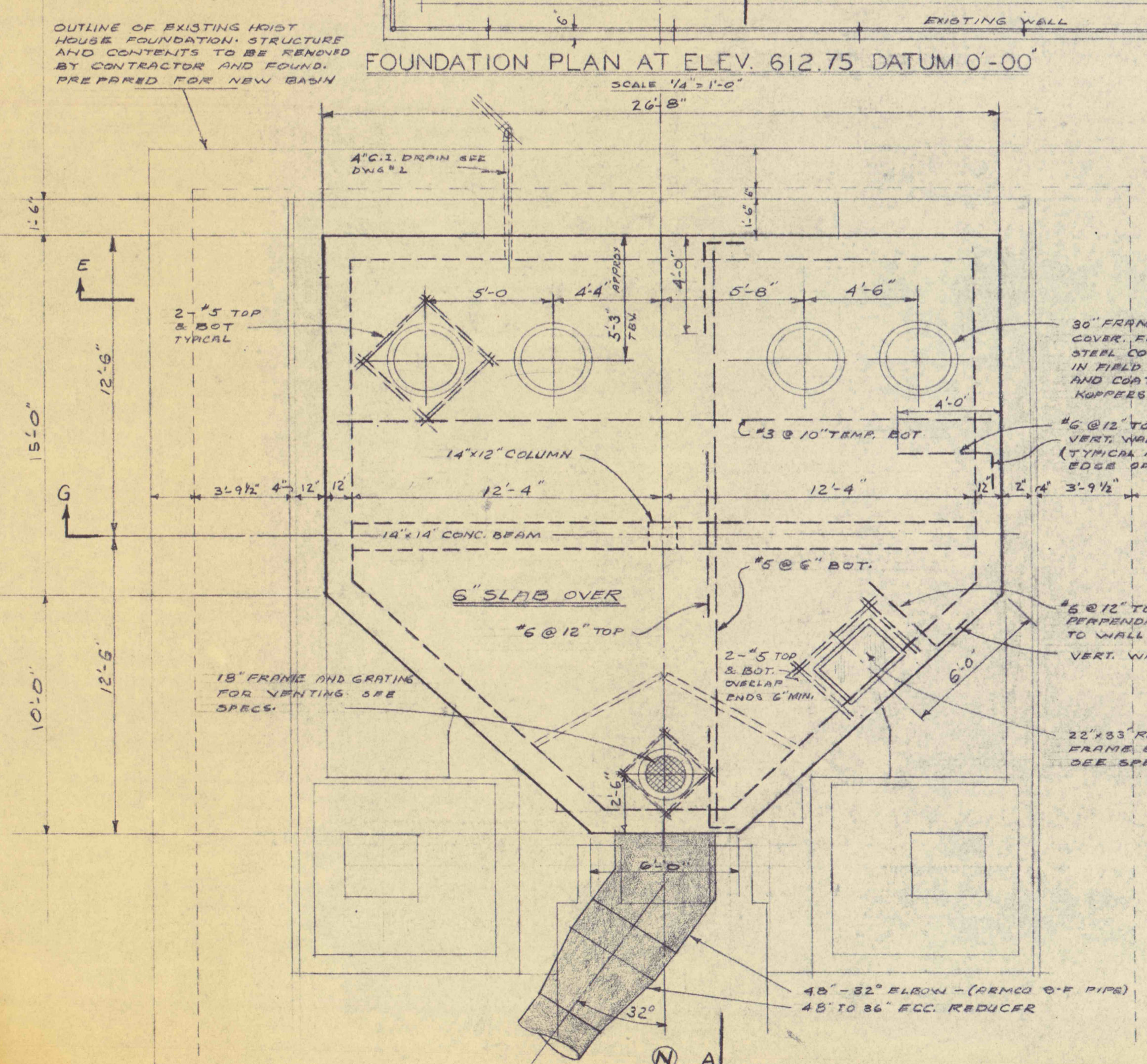
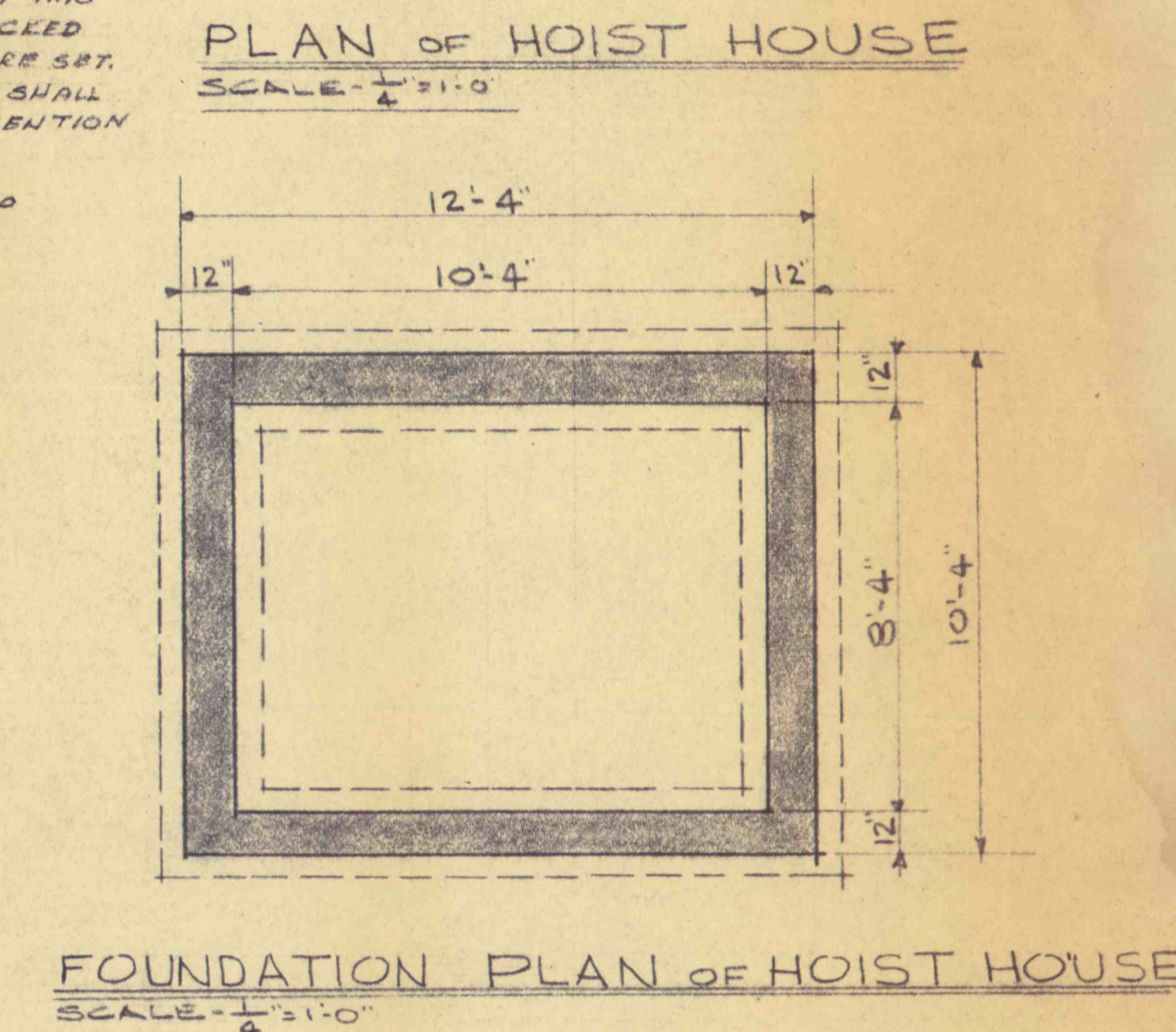
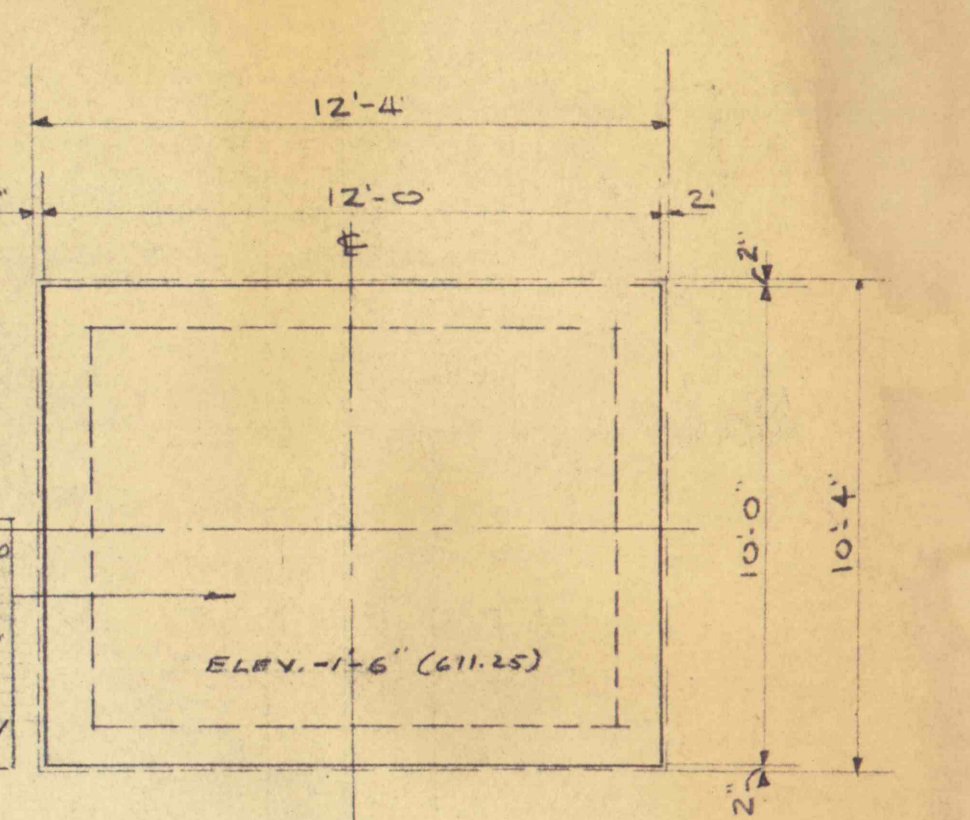
NOTES FOR ELECT. COND. SEE SH "13, 14 FOR GAS VENT PIPES SH "2 CONTRACTOR SHALL VERIFY ALL DIMENSIONS IN FIELD.



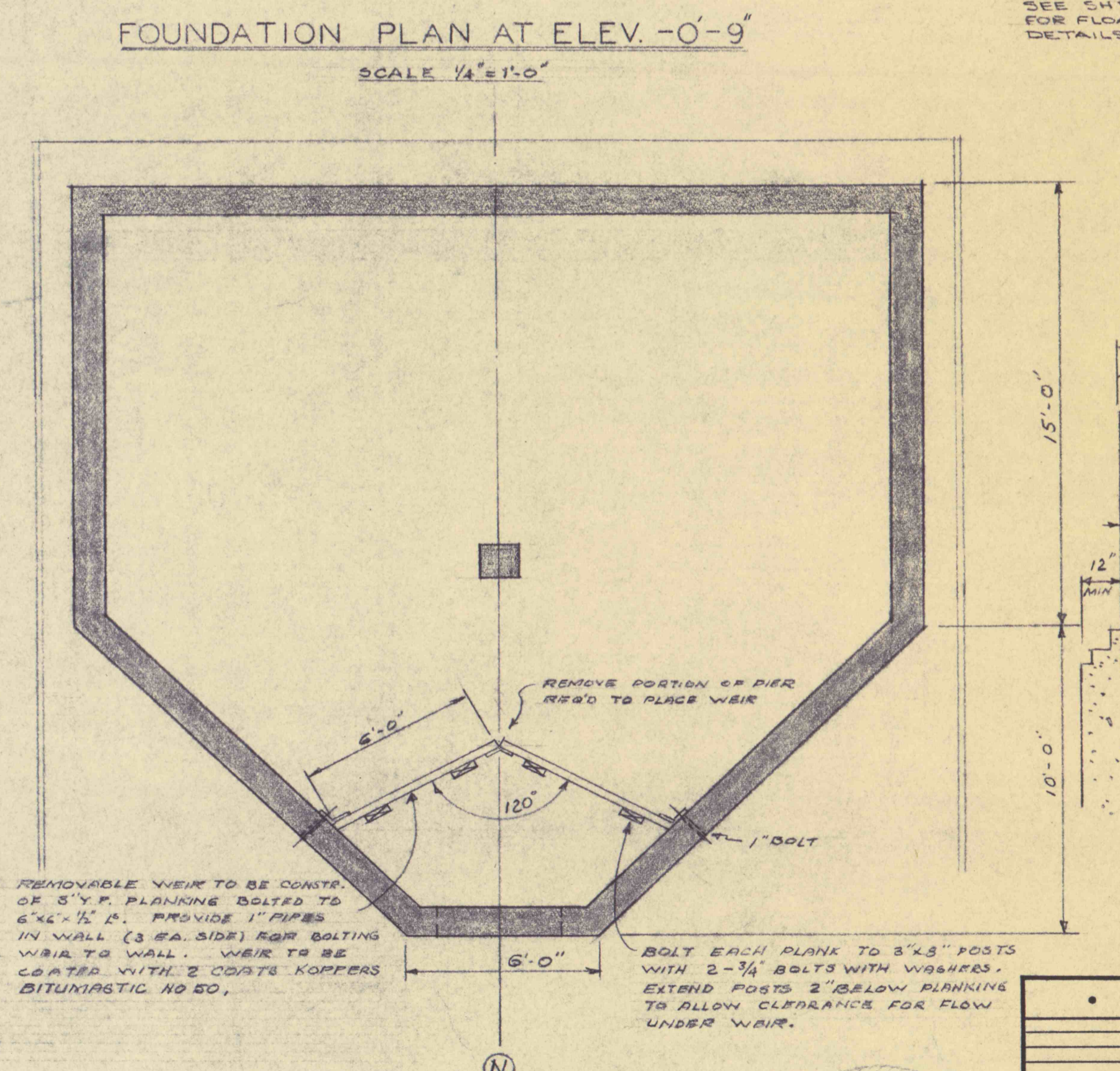
NOTE FOUNDATION BOLTS TO BE FURNISHED AND SET BY CONTRACTOR. SIZE AND LOCATION TO BE DETERMINED FROM HOIST TO BE OBTAINED FROM GLEN ALDEN CORP.

EXISTING OPENING AT THIS LOCATION TO BE CHARGED BEFORE FOOTINGS ARE SET. UNUSUAL CONDITION SHALL BE BROUGHT TO ATTENTION OF THE ENGINEERS

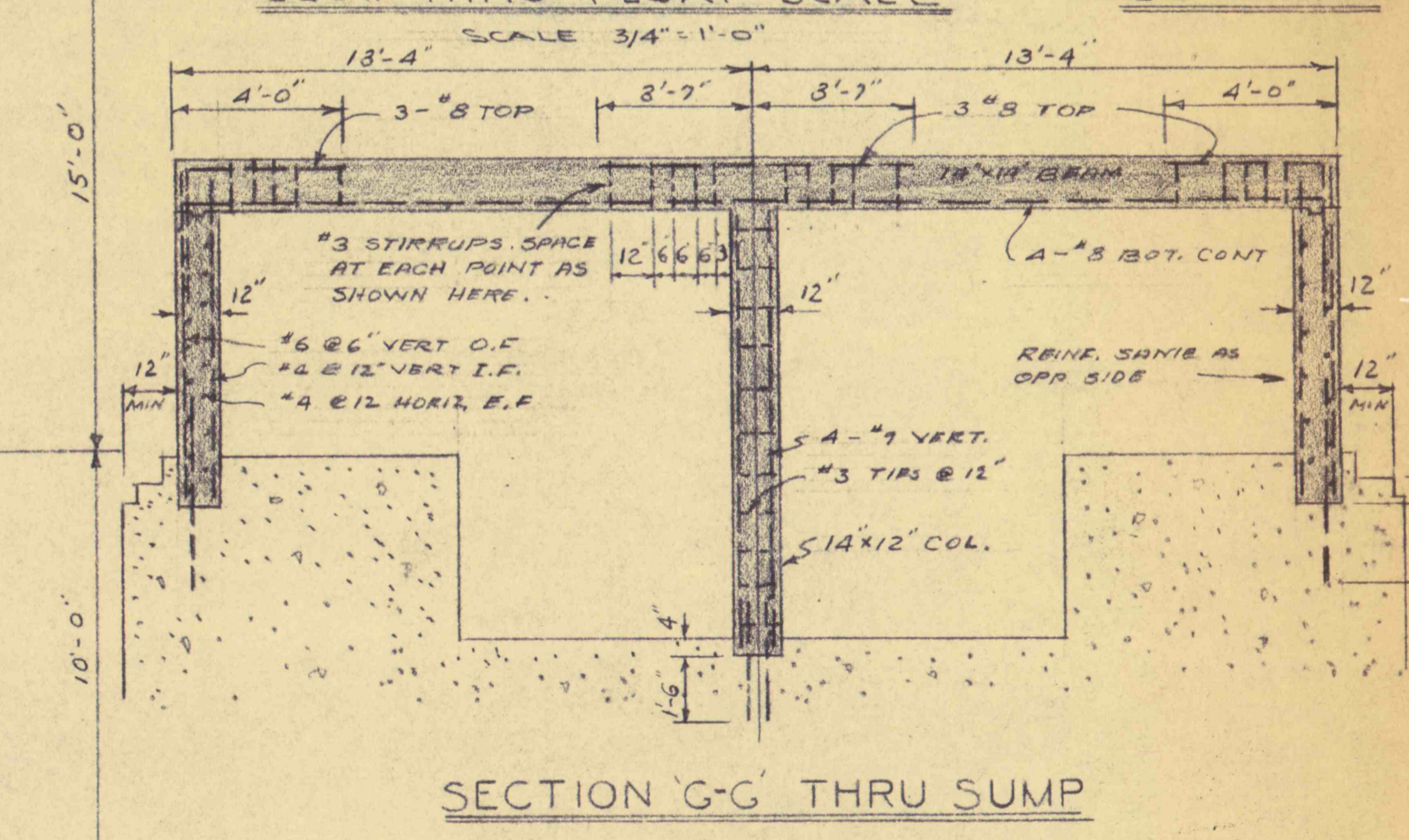
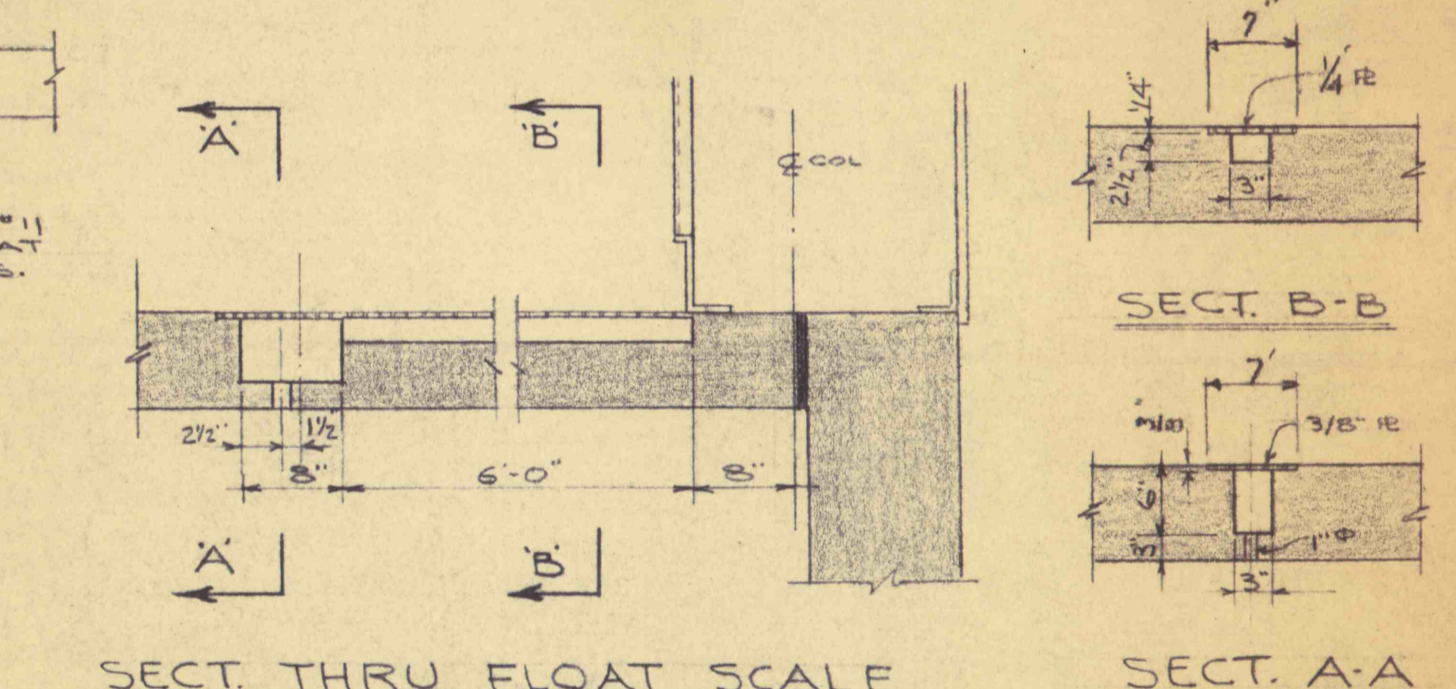
CUT SHIRT WALLS TO PLACE 27" WF102



NOTES REINF. BARS - HARD GRADE (20,000 PSI) CONC. FC = 3000 PSI @ 28 DAYS STEEL 1/2 = 20,000 PSI ASSUMED SOIL BEARING



NOTE: SEE SH #11 FOR FLOAT DETAILS.



FOUNDATIONS & DETAILS

REVISIONS	FLOOD CONTROL PROJECT NO 21 PHASE B PA. DEPT. OF MINES & MINERALS INDUSTRIES		
	GLEN ALDEN CORPORATION STANTON COLL NO. 7 SHAFT		
	ROUSHEY and SMITH		
SCALE NOTED	ENGINEERS AND CONSULTANTS	JOB 641	
DATE 1-30-37	181 MARKET ST. HUNTSVILLE, PA.	DWG. No. 4	
BY 35	METROPOLITAN WILKES BARRE		

