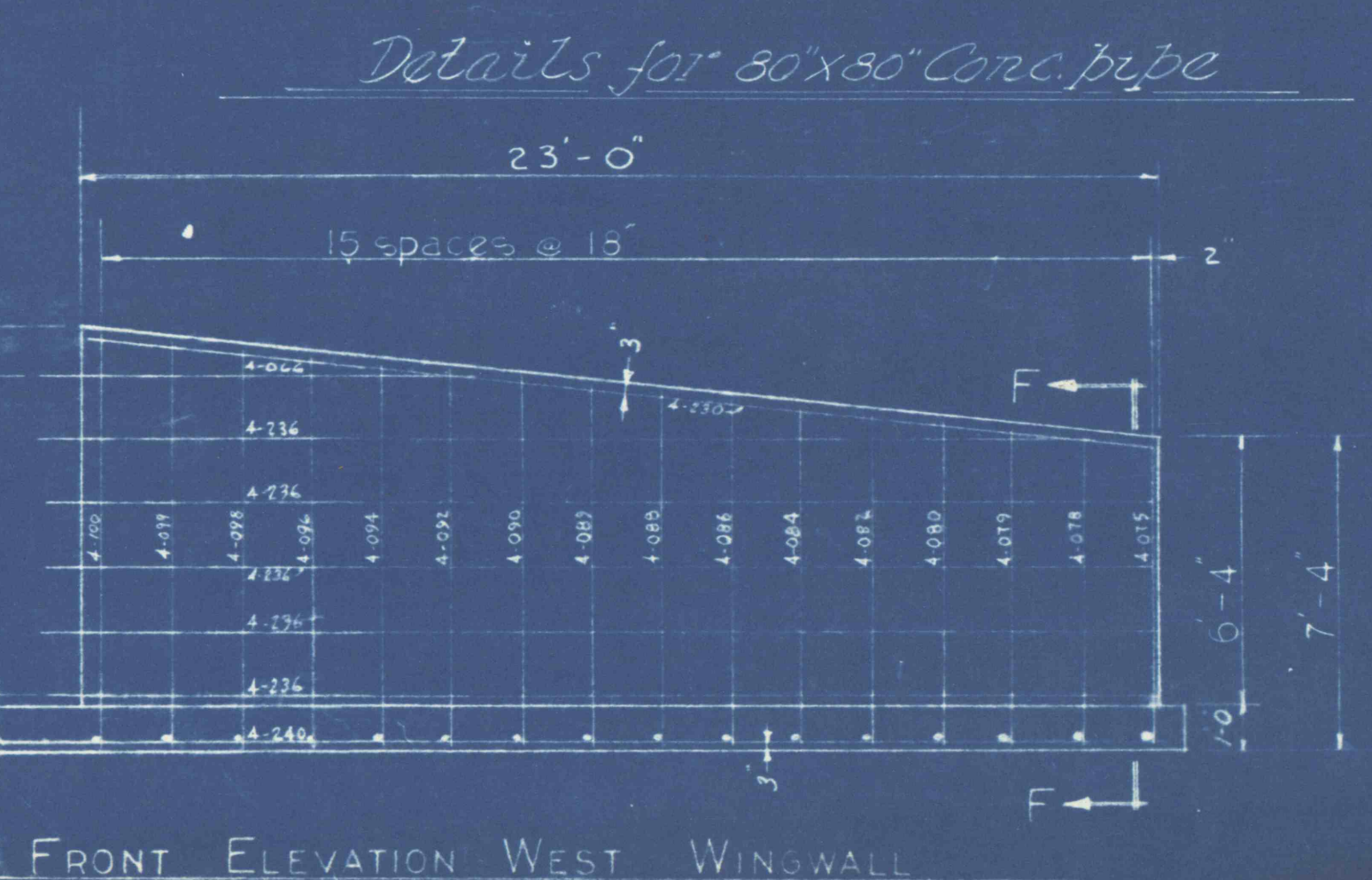
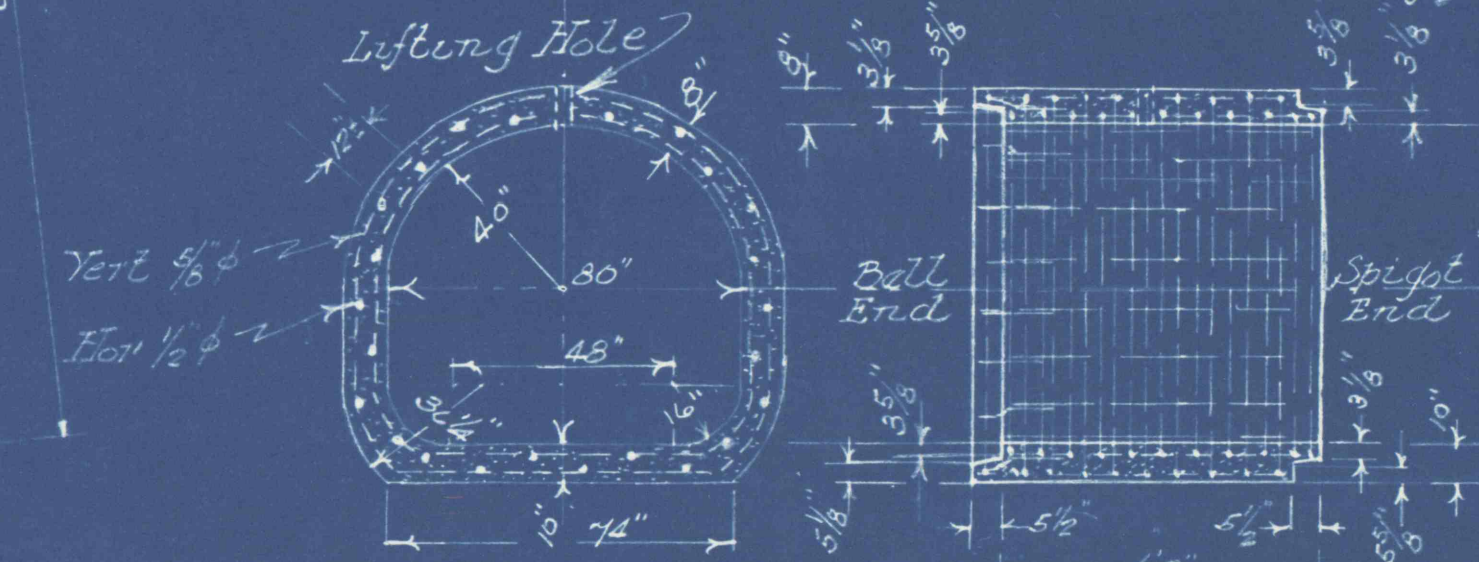


NOTE  
For details of  
concrete apron  
slab, see sheet 2

Annular Bars  $\frac{1}{8}$ "  $\phi$  - 4" O.C.  
Rein. Bars  $\frac{1}{2}$ " spaced evenly  
around annular bars  
approx. 12" O.C. staggered



BILL OF REINFORCING BARS

NO. REQ.	SIZE	TYPE	LGTH	MARK	NO. REQ.	SIZE	TYPE	LGTH	MARK	BEND DIAG.
27	4	hook	5'-2"	4-052	1	4	hook	10'-0"	4-100	
3	"	"	22'-0"	4-230	1	"	"	9'-9"	4-228	
4-034	4	hook	11'-2"	4-112	1	"	"	7'-0"	4-073	
4-033	4	hook	10'-8"	4-208	1	"	"	9'-4"	4-074	
4-031	1	"	7'-6"	4-076	1	"	"	7'-2"	4-072	
4-029	1	"	4'-2"	4-046	1	"	"	5'-9"	4-077	
4-078	4	"	3'-4"	4-074	1	"	"	8'-0"	4-075	
4-076	3	4	18'-6"	4-156	1	"	"	8'-6"	4-086	
4-074	3	"	24'-0"	4-240	1	"	"	8'-2"	4-084	
4-072	1	"	4'-5"	4-028	1	"	"	8'-2"	4-082	
4-070	1	"	4'-5"	4-028	1	"	"	8'-0"	4-080	
4-068	2	"	4'-2"	4-044	1	"	"	7'-9"	4-079	
4-066	2	"	4'-0"	4-040	1	"	"	7'-8"	4-078	
4-064	2	"	3'-9"	4-039	1	"	"	7'-5"	4-075	
4-062	1	"	3'-8"	4-038	1	"	"			
4-060	1	"	3'-7"	4-037	1	4	hook	6'-6"	4-066	
4-058	1	"	3'-6"	4-036	1	4	hook	23'-0"	4-230	
4-056	1	"	3'-5"	4-035	5	"	"	23'-6"	4-236	
4-054	1	"	3'-4"	4-034						
4-052	2	"	3'-3"	4-033						
4-050	2	"	3'-1"	4-031						
4-048	2	"	3'-0"	4-030						
4-046	2	"	2'-7"	4-029						
4-044	1	"	2'-8"	4-028						
4-042	2	"	2'-6"	4-026						
4-040	2	"	2'-4"	4-024						
4-038	4	"	2'-2"	4-022						
4-036	1	4	hook	9'-7"	4-099					
4-034	1	"	9'-7"	4-097						
4-032	1	"	9'-4"	4-094						
4-030	1	"	9'-2"	4-092						
4-028	1	"	9'-0"	4-090						
4-026	1	"	8'-9"	4-089						
4-024	1	"	8'-6"	4-086						
4-022	1	"	8'-4"	4-084						
4-020	1	"	8'-1"	4-081						
4-018	1	"	7'-9"	4-079						
4-016	1	"	7'-8"	4-078						
4-014	1	"	7'-5"	4-075						
4-012	1	4	hook	7'-6"	4-076					
4-010	6	"	18'-0"	4-180						

- GENERAL NOTES
- All excavation near track must be properly sheeted
  - All concrete to have <sup>3500</sup> pounds per square inch compressive strength in 28 days
  - One inch chamfer on all exposed corners of walls
  - Footings must bear on firm soil
  - Reinforcing steel shall comply with the specification for structural steel as given in the standard specifications of A.R.E.A.
  - Forms must not be removed until the concrete has attained sufficient strength to carry both the live load, dead load and any other loads that may be imposed on it.

APPROVED B. J. Minetti  
Chief Engineer - C.R.R. Co of N.J. *Sheet 11 of 11*

CENTRAL RAILROAD Co of N.J.  
PENN. DIVISION NANTICOKE BR.  
AUCHINCLOSS, PA.

CONCRETE PIPE CULVERT UNDER CRR  
NORTH HEADWALL

MARCH  
PREPARED BY: GLENN ALDEN CORPORATION  
SURFACE DRAINAGE PROJECT  
LEADER CREEK-HANOVER