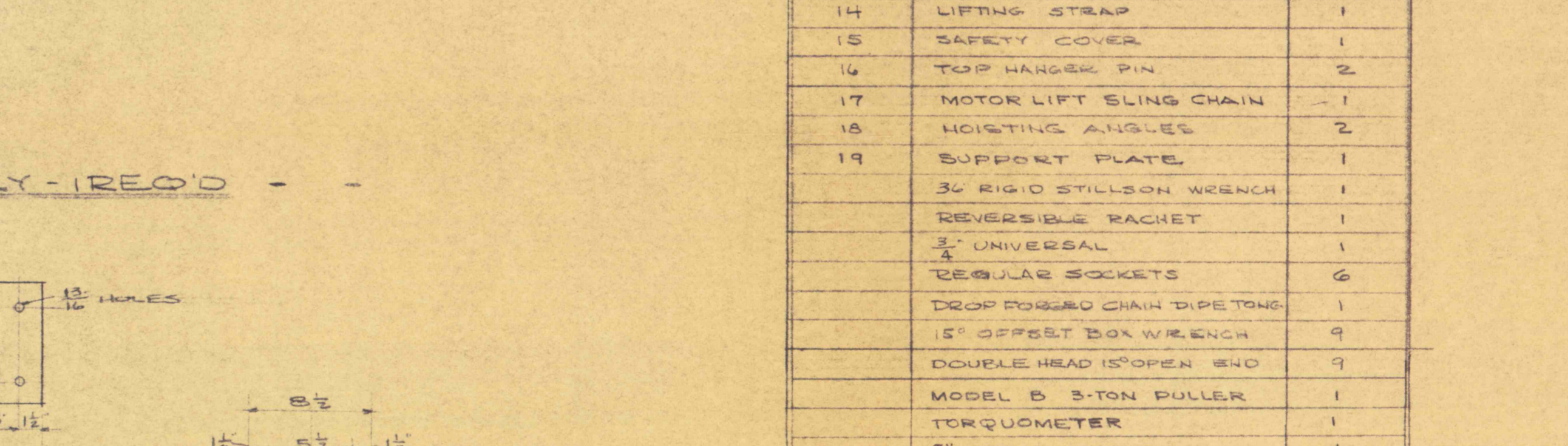
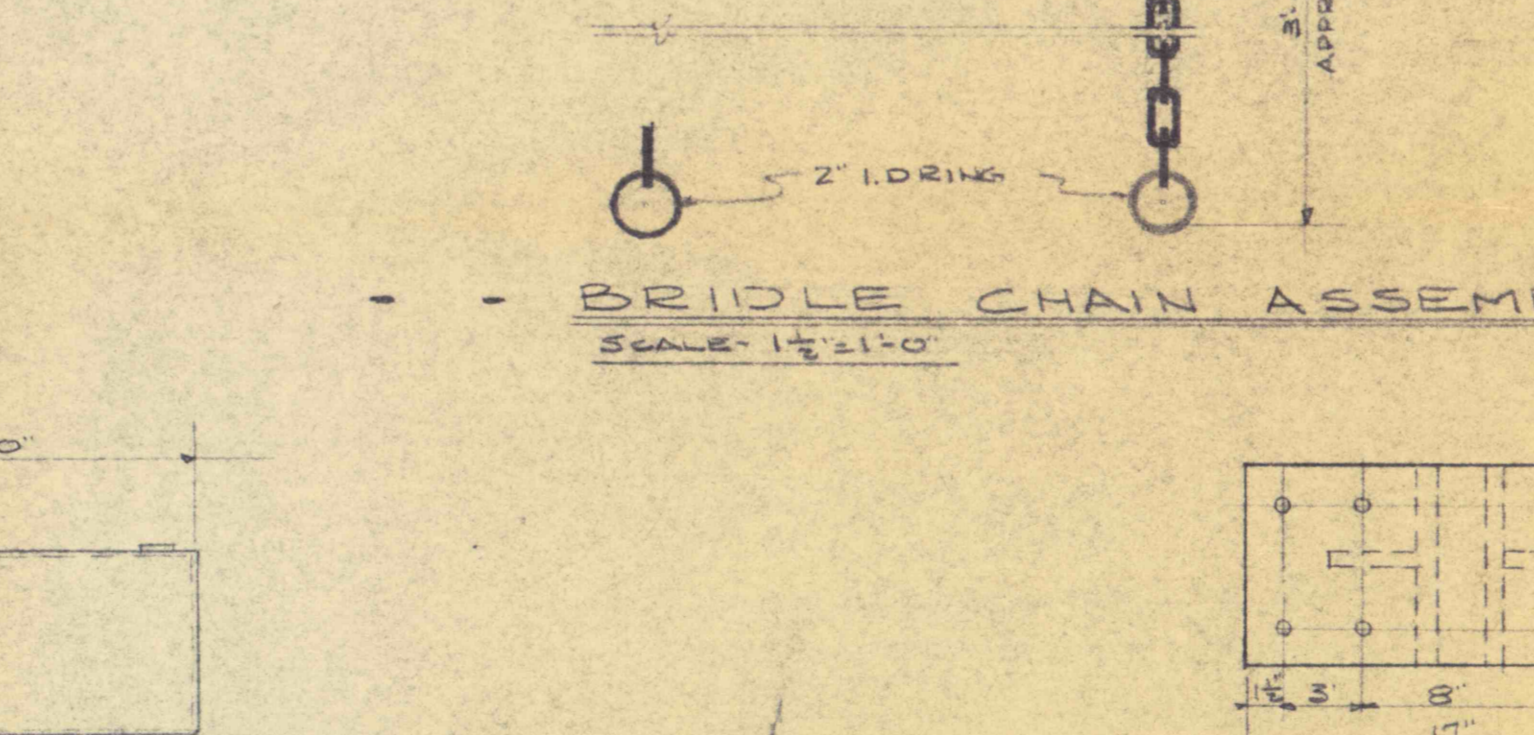
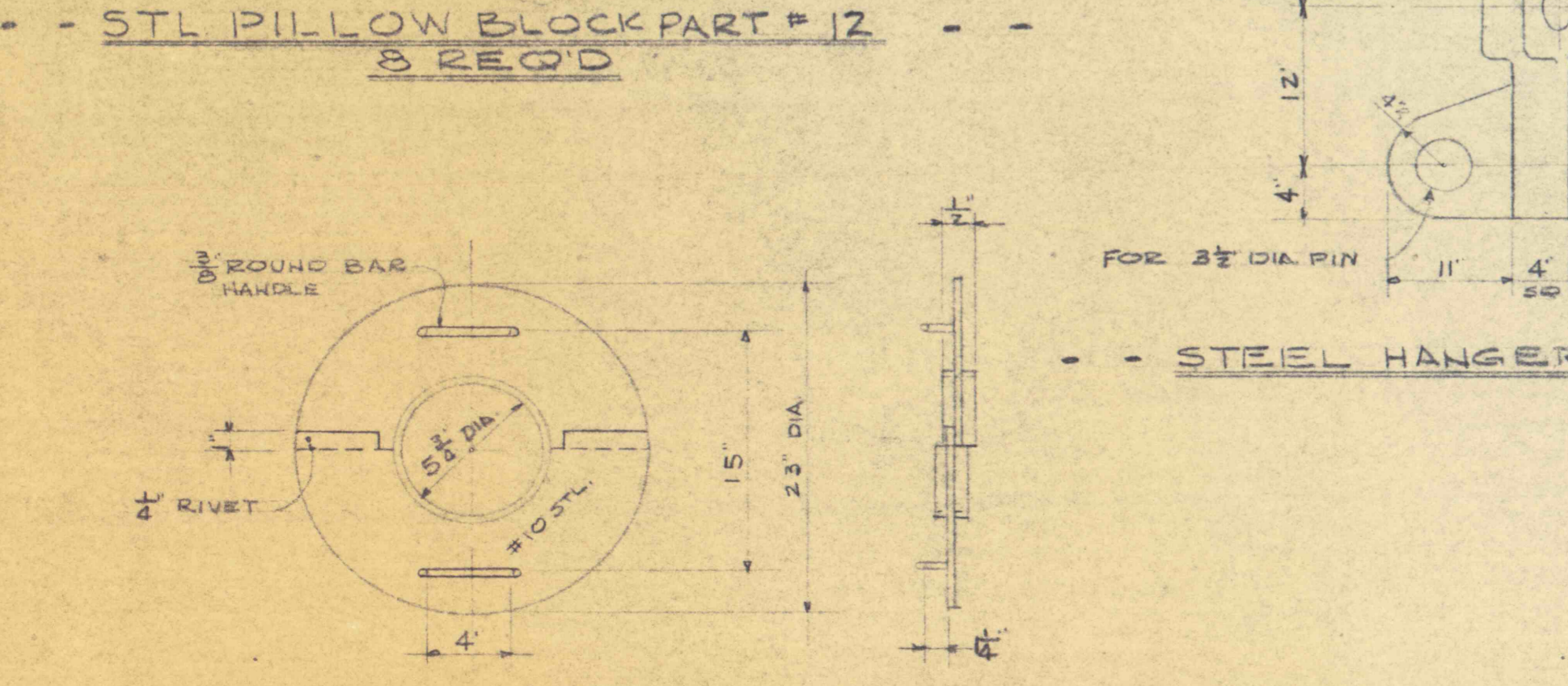
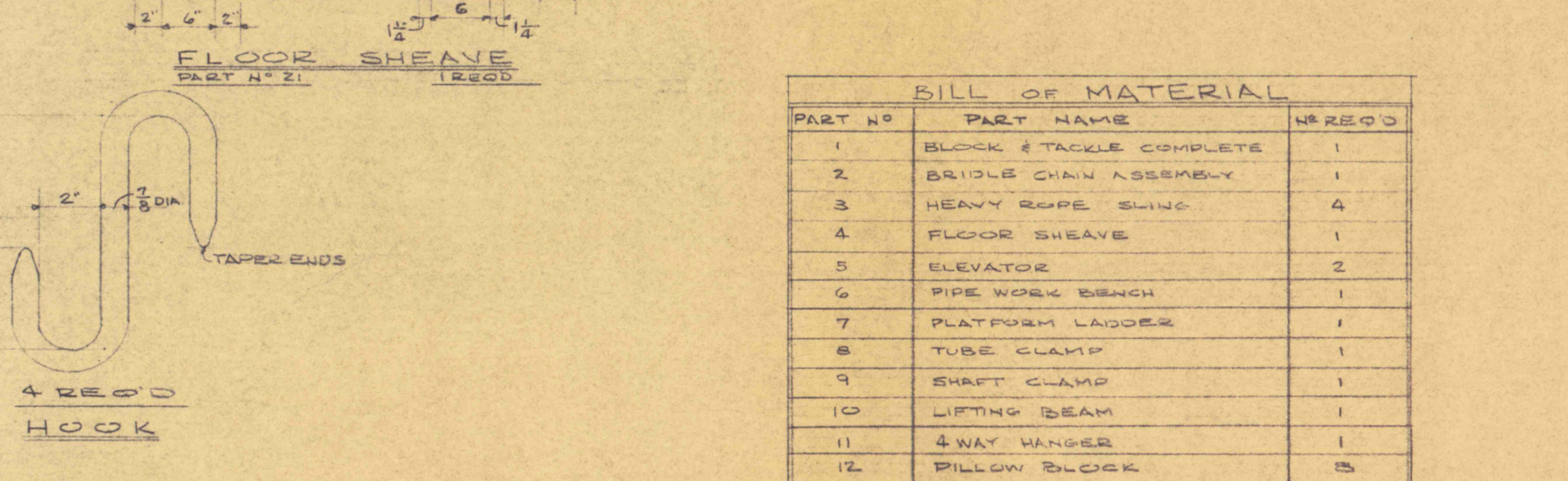
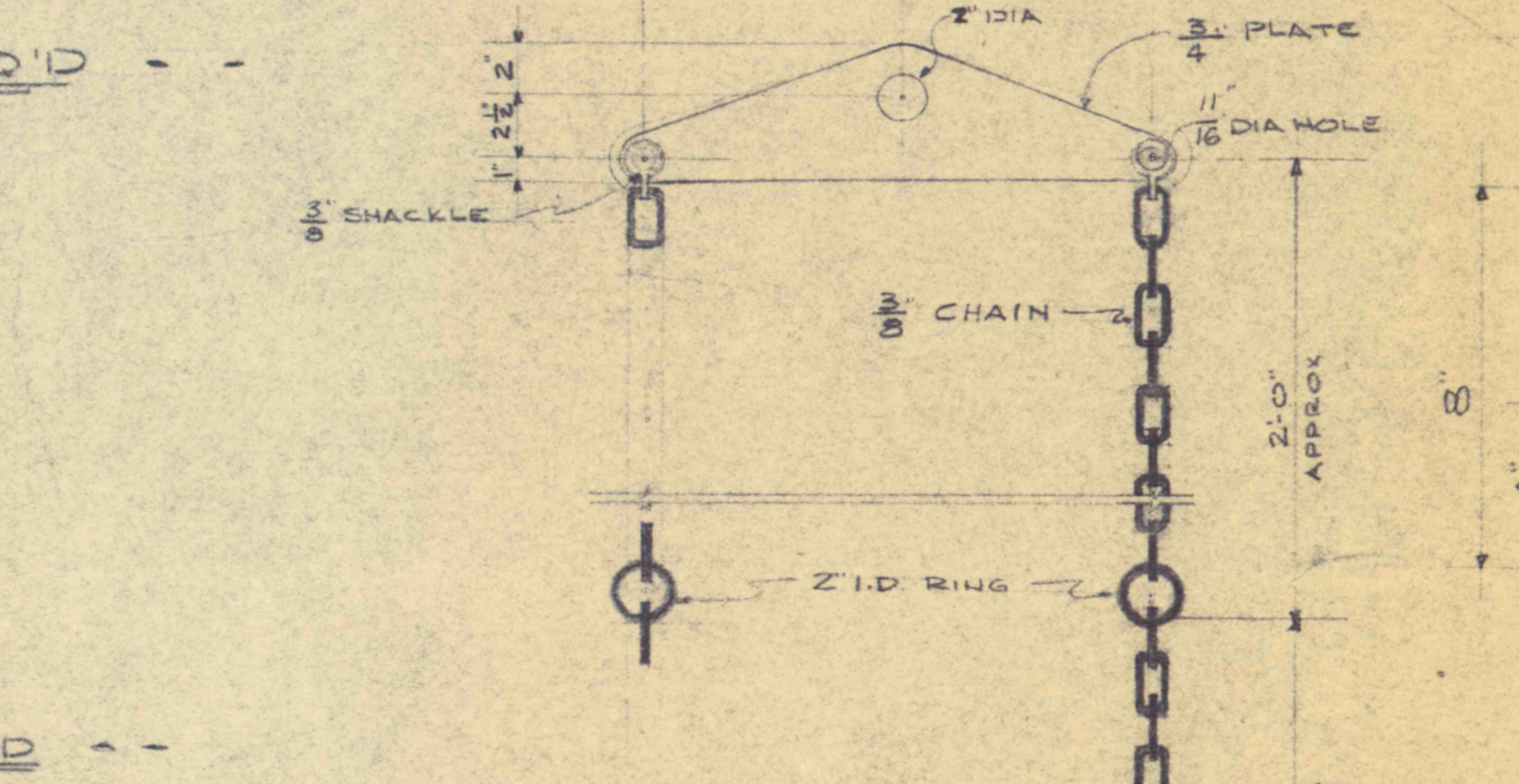
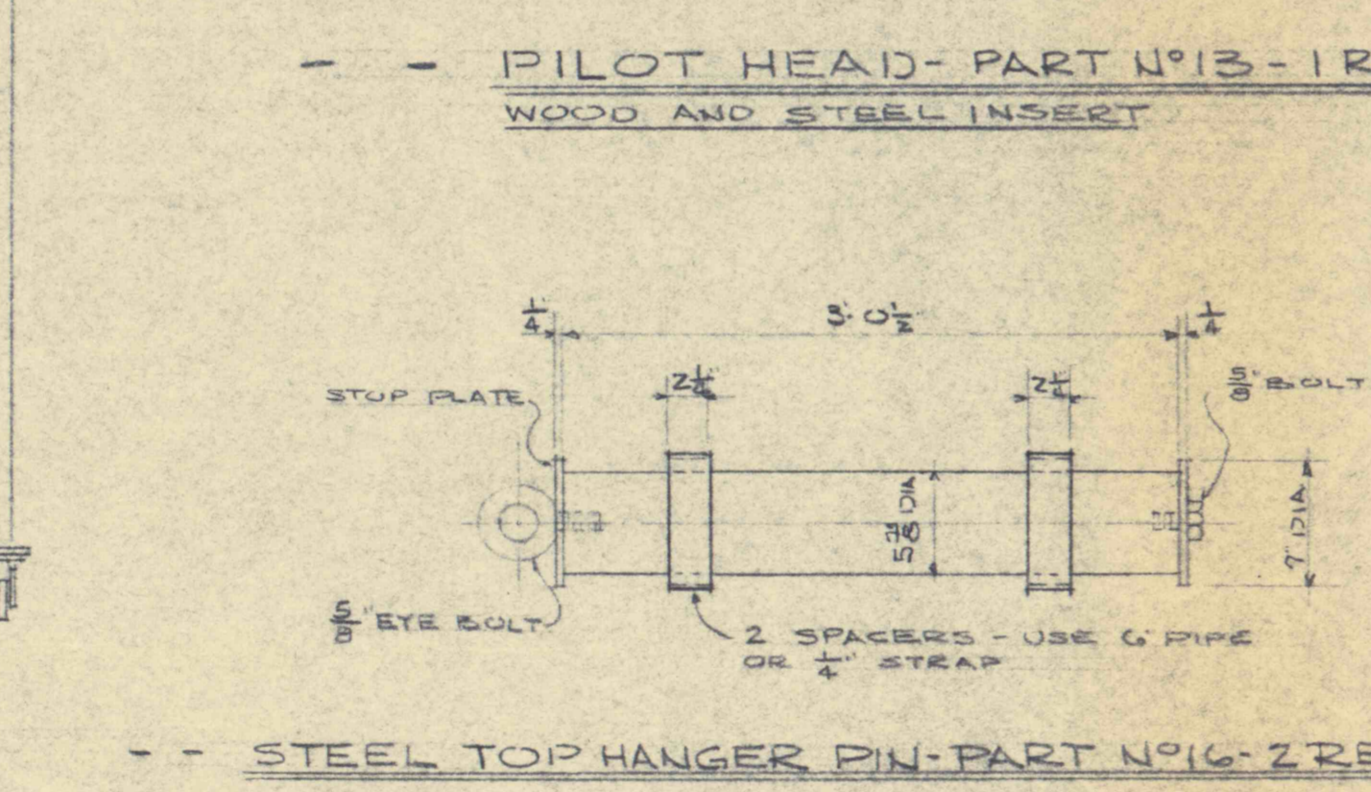
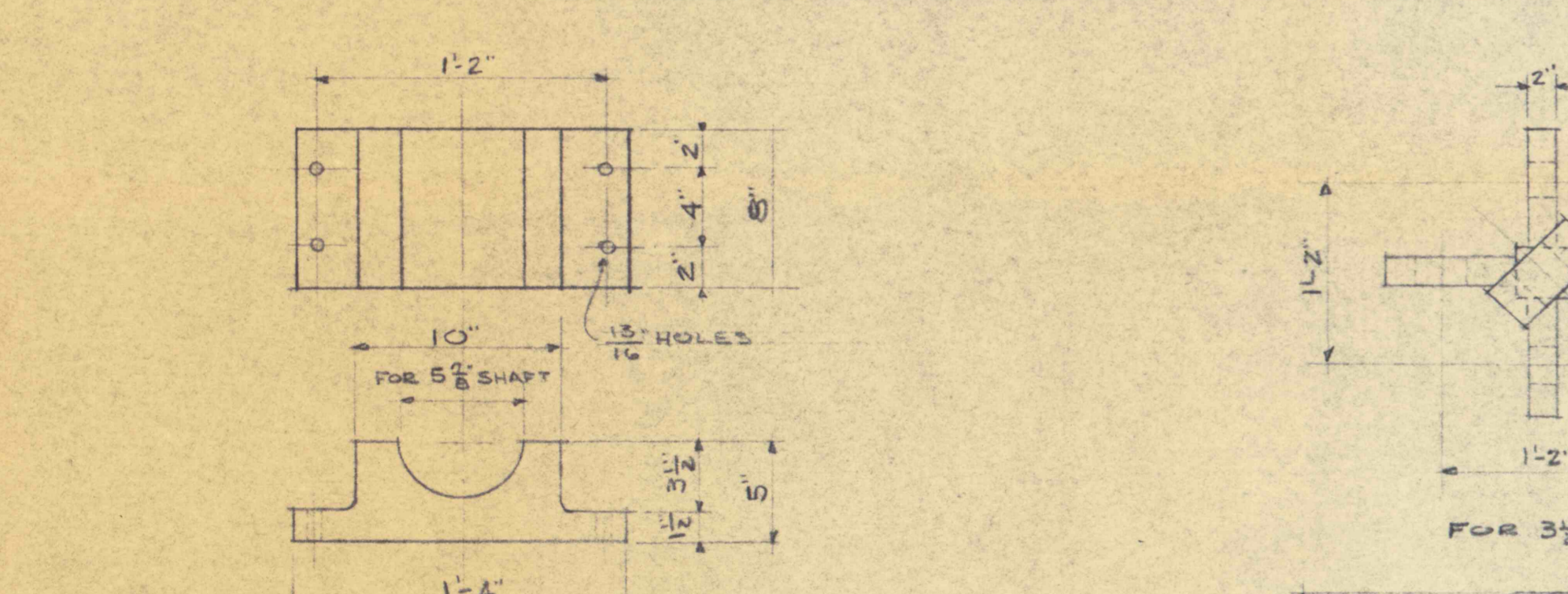
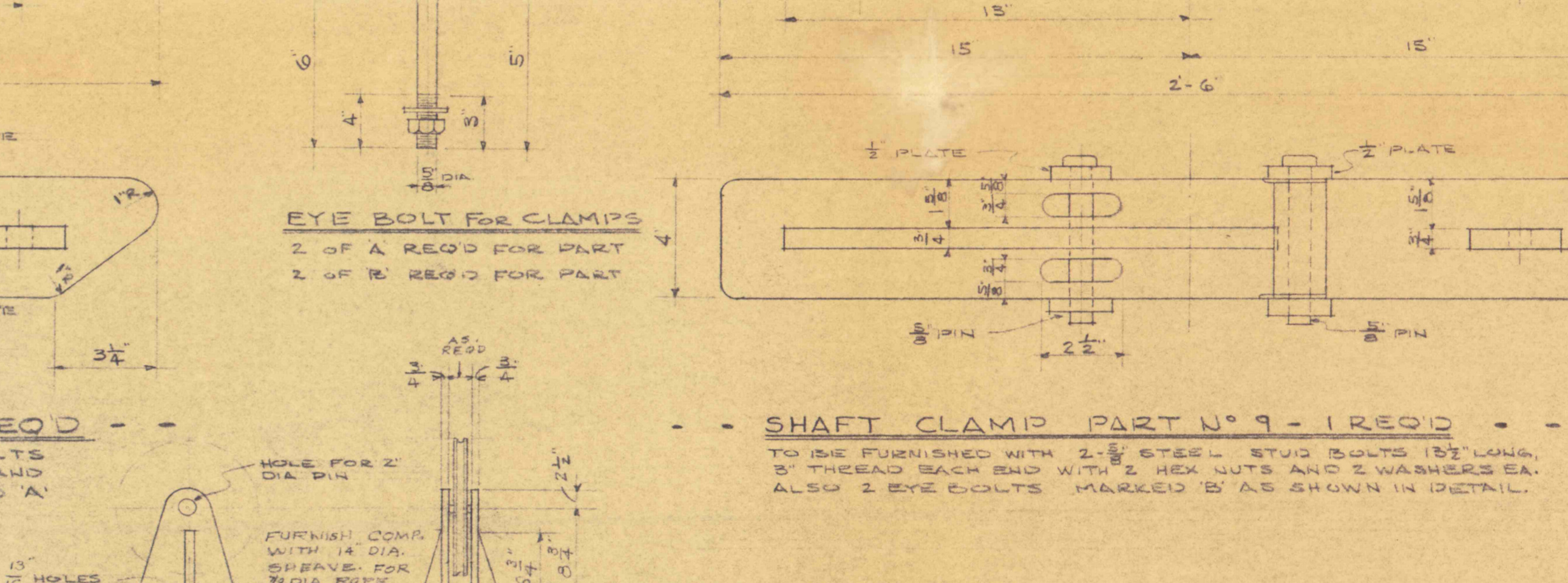
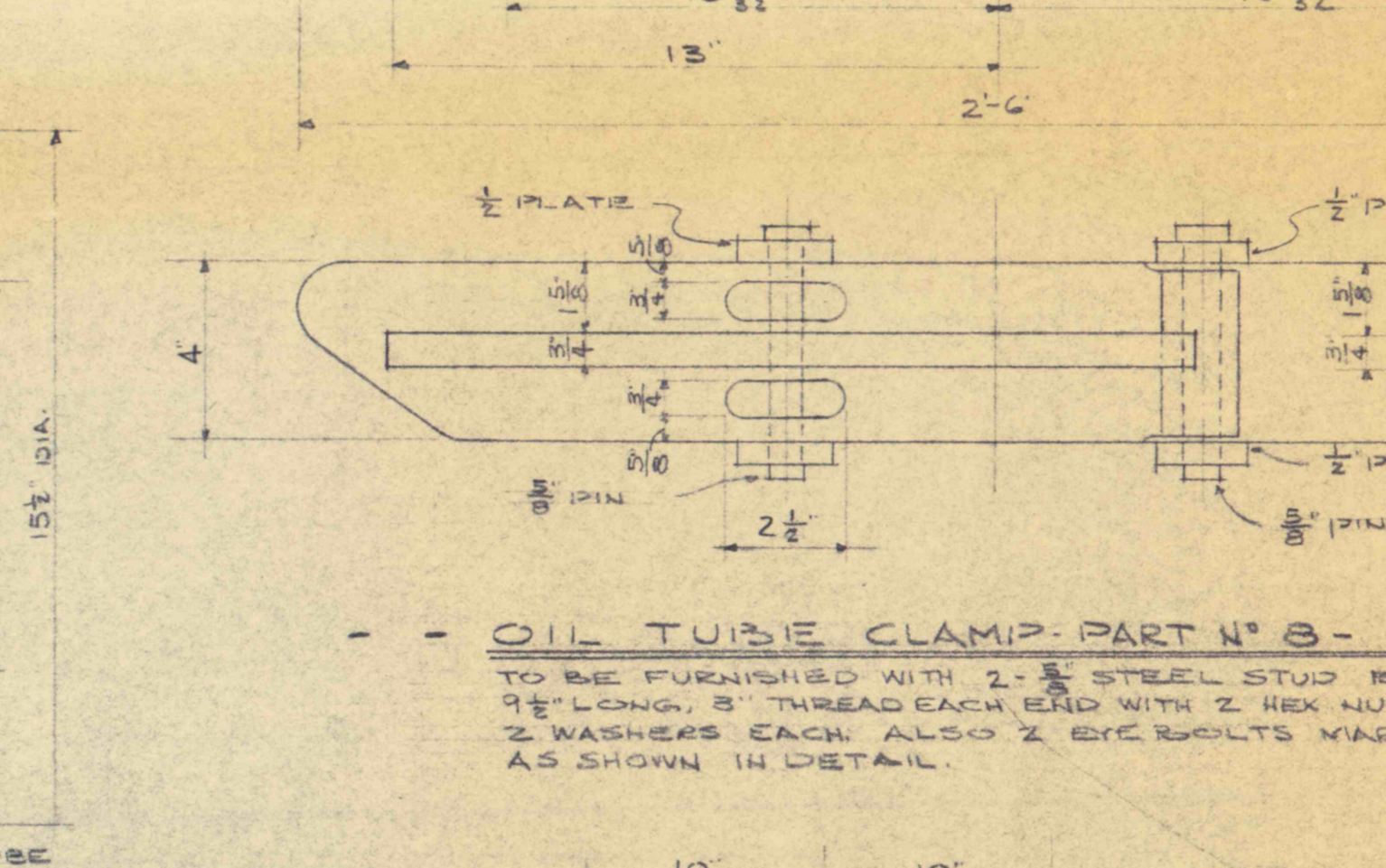
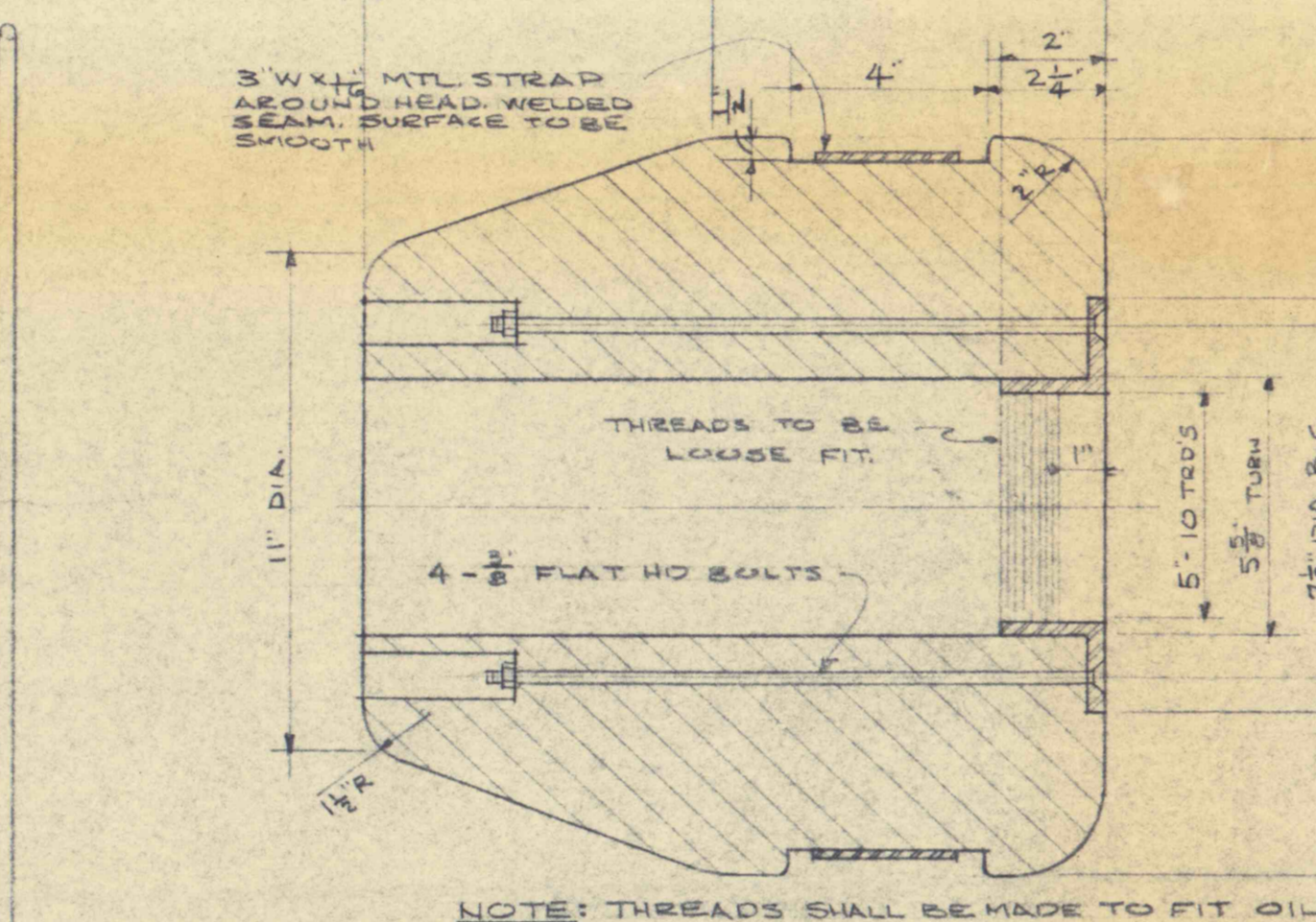
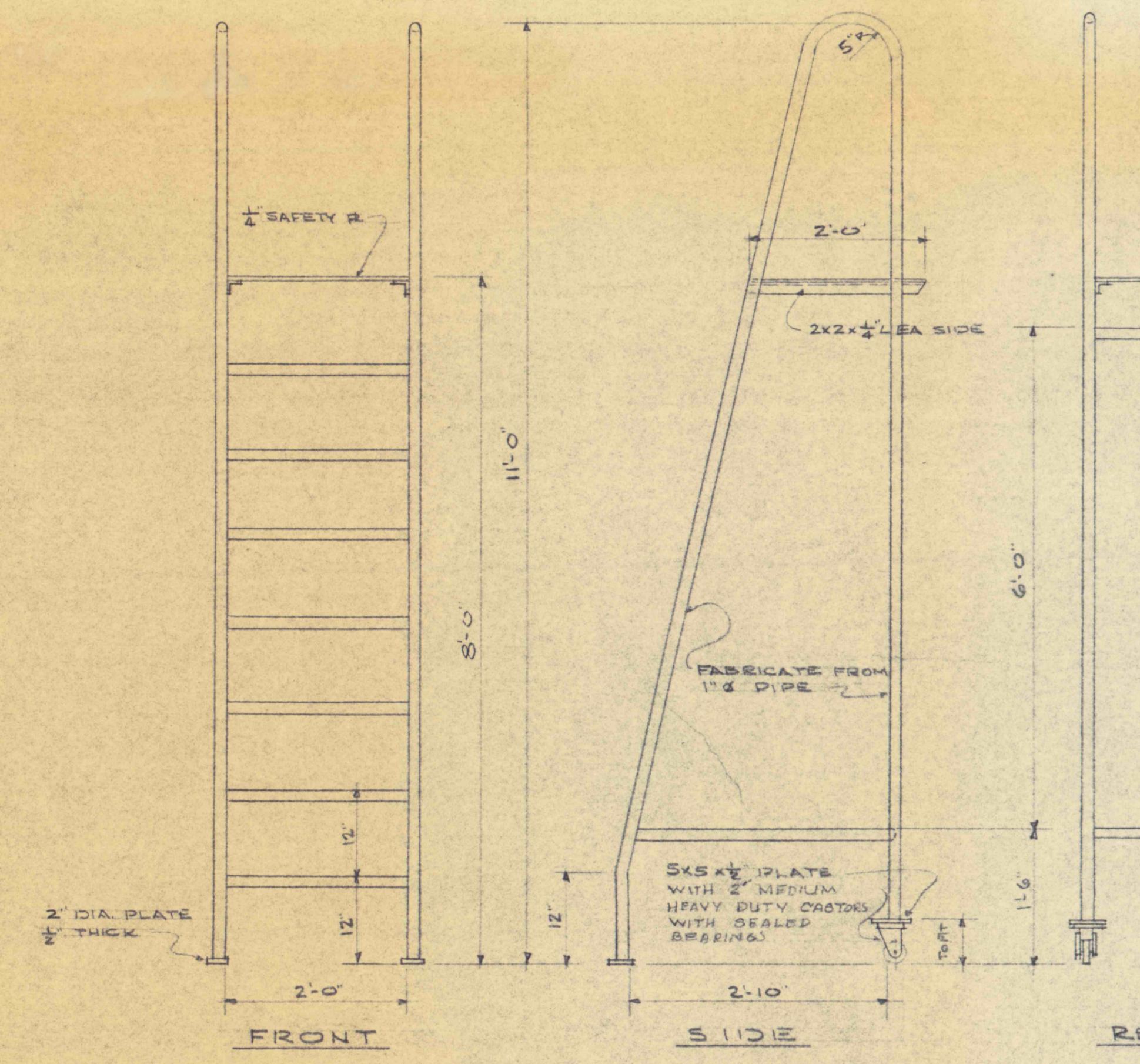


PIPE WORK BENCH - PART NO 6 - 1 REQ'D  
SCALE 3/4" = 1'-0"

DETAIL FRAME B

OIL TUBE CLAMP - PART NO 8 - 1 REQ'D  
SCALE 1/2" = 1'-0"

EYE BOLT FOR CLAMPS - PART NO 21 - 1 REQ'D  
SCALE 1/2" = 1'-0"



PART NO	PART NAME	NO REQ'D
1	BLOCK & TACKLE COMPLETE	1
2	BRIDLE CHAIN ASSEMBLY	1
3	HEAVY ROPE SLING	4
4	FLOOR SHEAVE	1
5	ELEVATOR	2
6	PIPE WORK BENCH	1
7	PLATFORM LADDER	1
8	TUBE CLAMP	1
9	SHAFT CLAMP	1
10	LIFTING BEAM	1
11	4 WAY WANDER	1
12	PILLOW BLOCK	8
13	PILOT HEAD	1
14	LIFTING STRAP	1
15	SAFETY COVER	1
16	TOP HANGER PIN	2
17	MOTOR LIFT SLING CHAIN	1
18	HOISTING ANGLE	2
19	SUPPORT PLATE	1
20	30 RING STILLSON WRENCH	1
21	REVERSIBLE RACKET	1
22	UNIVERSAL	1
23	REGULAR SOCKETS	6
24	DROP FORGED CHAIN DIP TONS	1
25	15" OFFSET BOX WRENCH	1
26	DOUBLE HEAD ISOPEN END	1
27	MODEL B 3-TON PULLER	1
28	TORQUEMETER	1
29	6" STRAP WRENCH	1
30	15" SNIVEL SHEAVE	1
31	FLOOR SHEAVE	1

MISCELLANEOUS TOOLS & EQUIP.  
FLOOD CONTROL PROJECT NO. 4 - PHASE B  
PA. DEPT. OF MINES & MINERAL INDUSTRIES  
PENNSYLVANIA COAL COMPANY  
EVEN COLLIERY HOYT SHAFT  
RAY E. ROUSHEY  
ENGINEER  
1930 JUN 21 1933

SAFETY COVER - PART NO 15 - 1 REQ'D

SUPPORTING PLATE FOR PUMP BOWL ASSY - PART NO 19 - 1 REQ'D

HOISTING ANGLE FOR PUMP BOWL ASSY - PART NO 18 - 2 REQ'D

15" SNIVEL SHEAVE - PART NO 20 - 1 REQ'D