

CONDUIT TO SIZE	FROM	TO	CONDUCTOR	USE
1 4"	STARTER #1	PUMP #1	3 #10	MOTOR FEED
2 4"	" #2	" #2	"	"
3 4"	" #3	" #3	"	"
4 4"	" #4	" #4	"	"
5 3"	" #1	" #1	2 #8	200 Watt # 74 25
6 3"	" #2	" #2	"	"
7 3"	" #3	" #3	"	"
8 3"	" #4	" #4	"	"
9 1 1/2"	CONTROL SECT. LOAD CENTER	2 #4 1 #0	1 #0	LIGHTING
10 2"	"	HOISTHOUSE	3 #2	HOIST
11 2"	"	"	2 #0 1 #0	BLOCKING
12 1 1/2"	"	TOWER	2 #2	TOWER
13 1"	"	HOISTHOUSE	"	"
14	"	TOWER LIGHTING	"	"
15 5/8"	GROUND	GROUND	4/0	MAIN GROUND
16 3/4"	PUMPS 1-2-3-4	MAIN GROUND	"	GROUND
17 3/4"	BASE HOISTING TOWER	"	1/0	"
18 3/4"	HOIST	"	1/0	"
19 3/4"	TRANSFORMER	"	1/0	"
20 3/4"	TOWER	"	1/0	"
21 3/4"	O.C.B.	"	1/0	"
22 3/4"	CUBICLE	"	1	"
23 3/4"	FEEDER AND GATE PUMPS	"	1/0	"

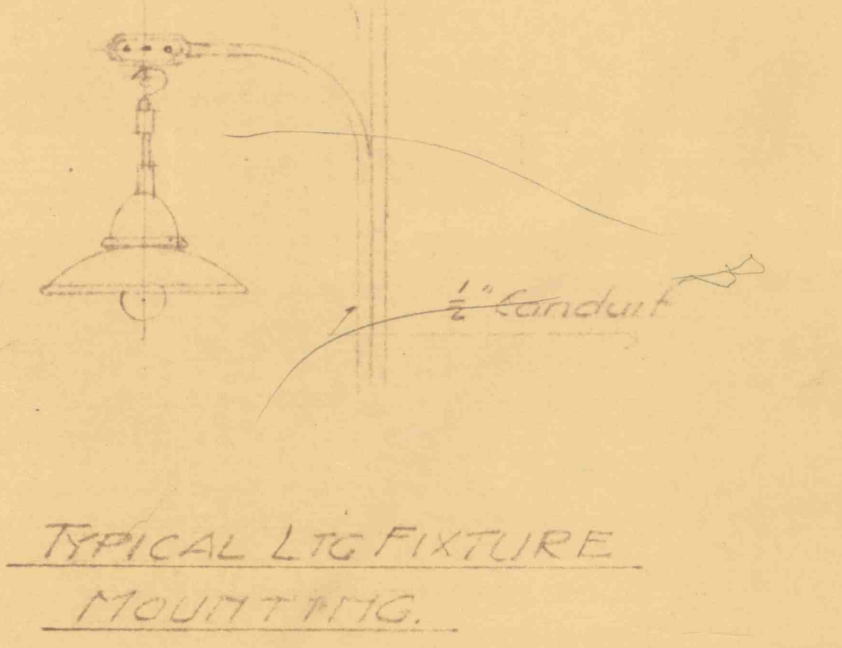
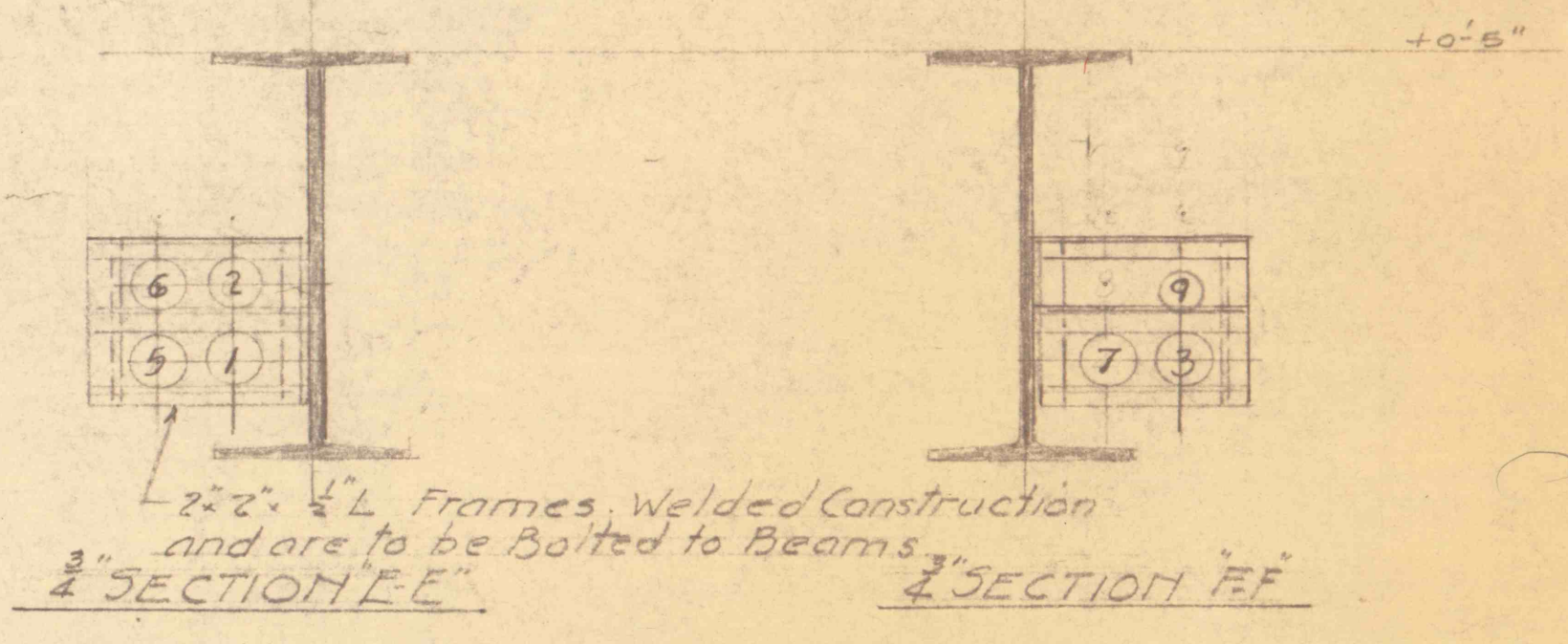
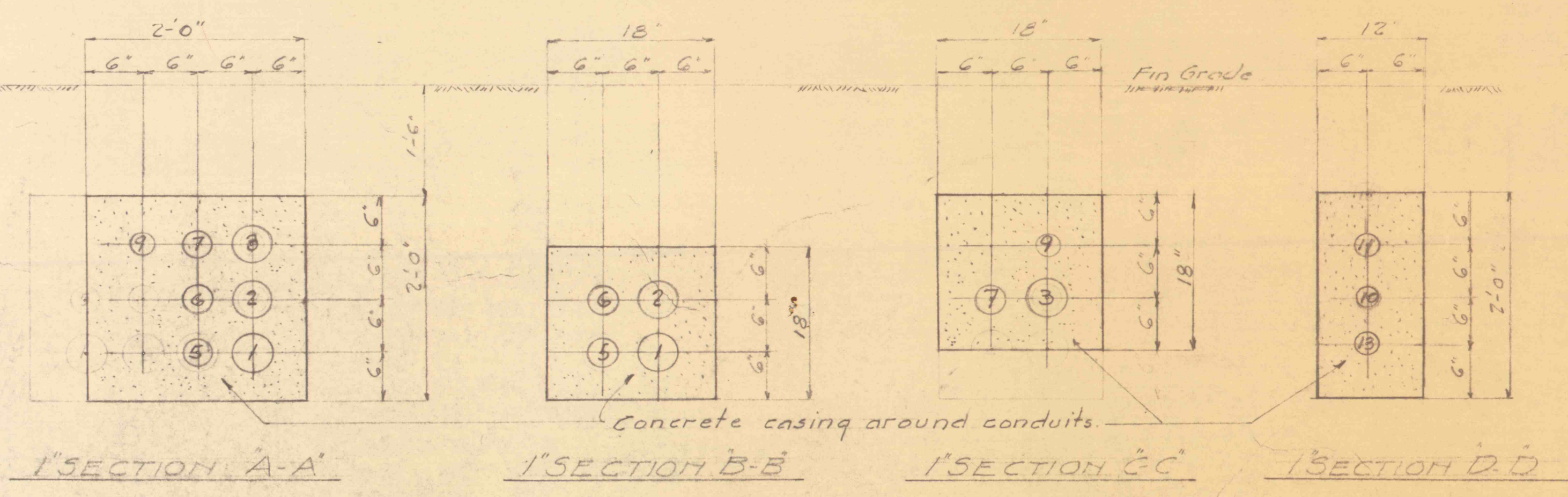
LIGHTING PANEL CIRCULAR - 100A

Main Circuit

#1 Main Floor Lighting	#2 Main Floor Lighting
#3 2nd "	#4 3rd "
#5 Top "	#6 Receptacles
#7 Spare	#8 Spare

LIGHTING PANEL HOIST HOUSE - 30A

#1 - Lighting	#2 - Receptacles
#3 - Tower Lighting Circuit	#4 - Tower Lighting Circuit
#5 - Spare	#6 - Spare



ELECTRICAL

11 Sheets

JO. WILKES & SONS COLLIERY FLOODLIGHTS & PHASE B. PA. PROF. MINE & INDUSTRIAL ENGINEERS

GLEN ALDEN CORPORATION Wilkes-Barre, Pa. CONSTRUCTION ENGINEERS

SCALE:

APPROVED Const. Engr. G.W.C. 1/10/39

TRACED BY

CHECKED BY

DRAWN BY S.L.B. 10-17-39

R 1223