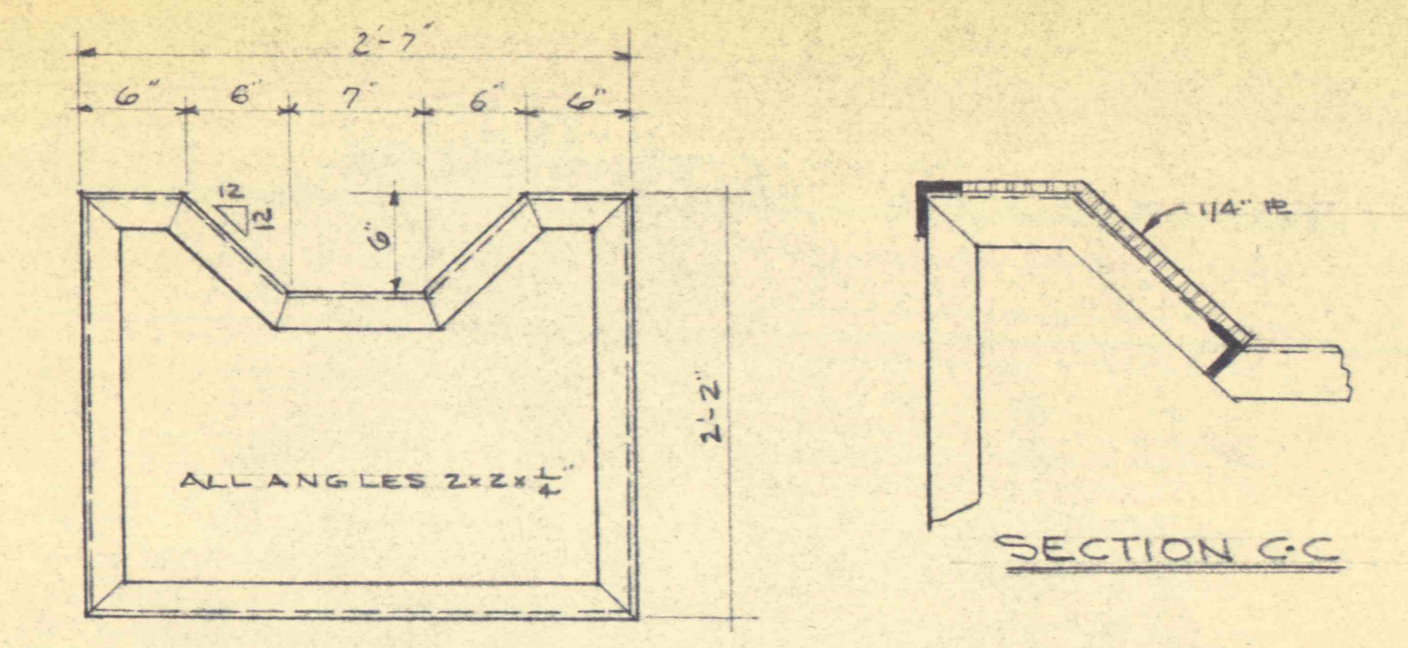
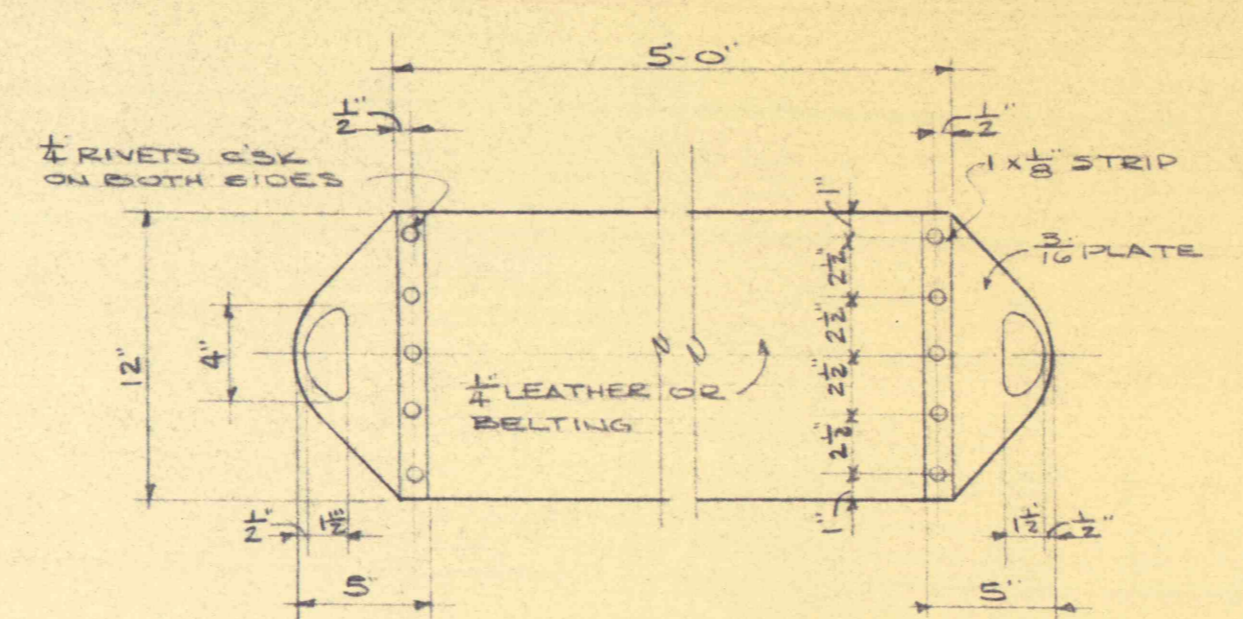


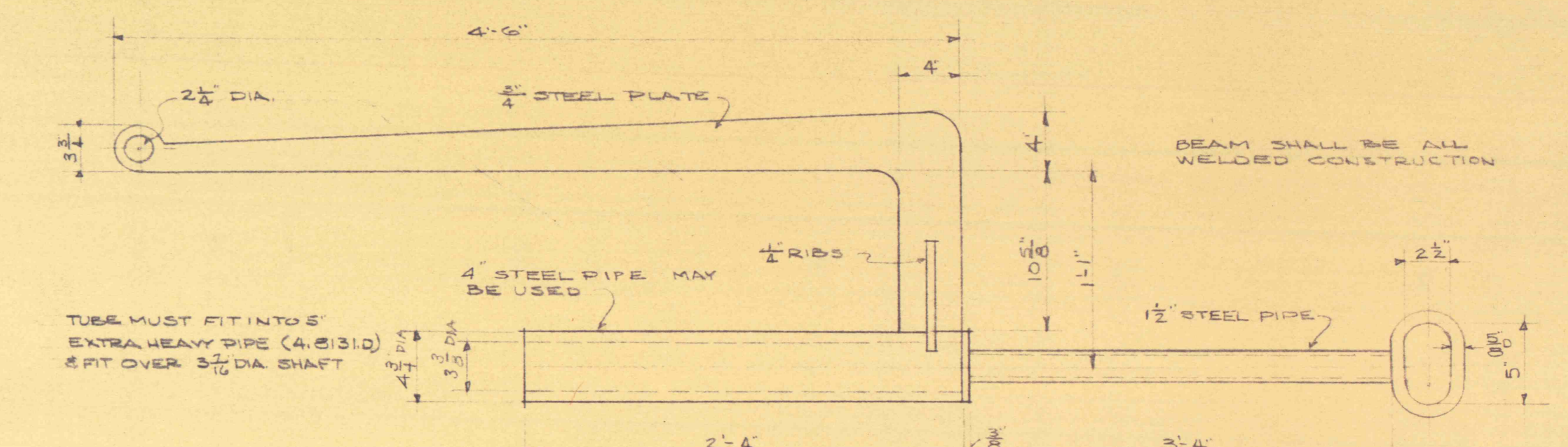
NOTE: BENCH SHALL HAVE ALL WELDED CONSTRUCTION



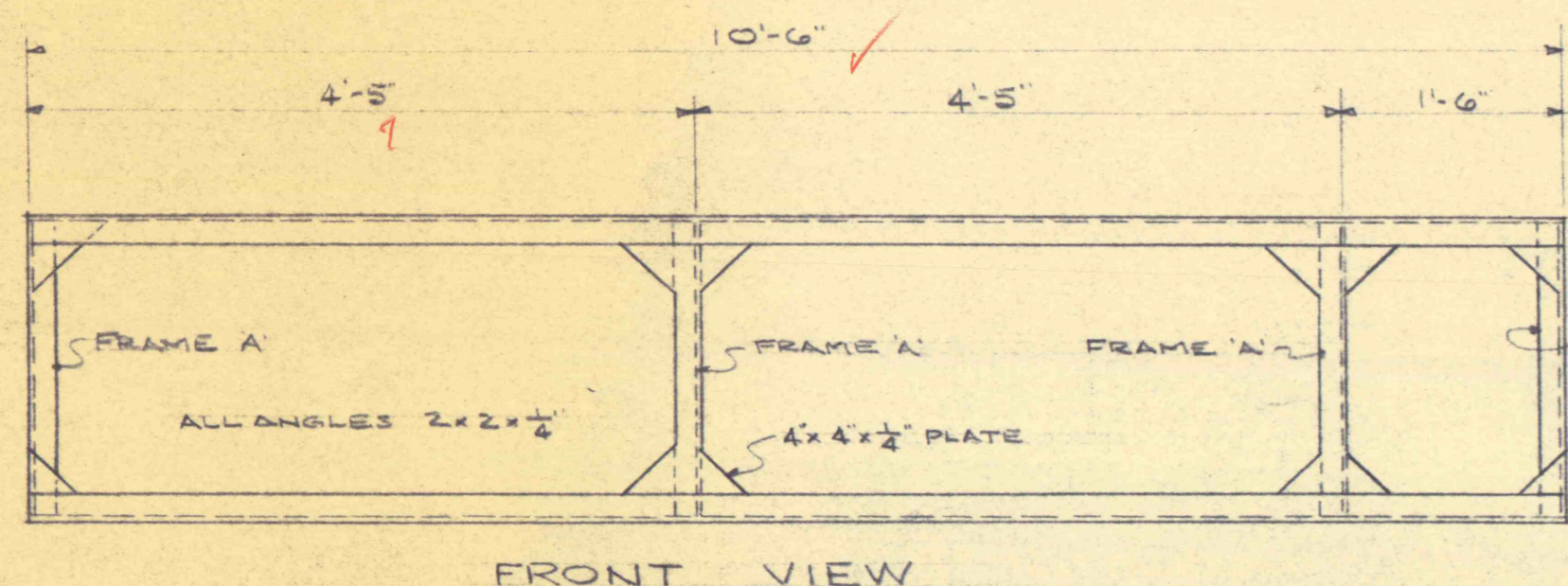
SECTION GC



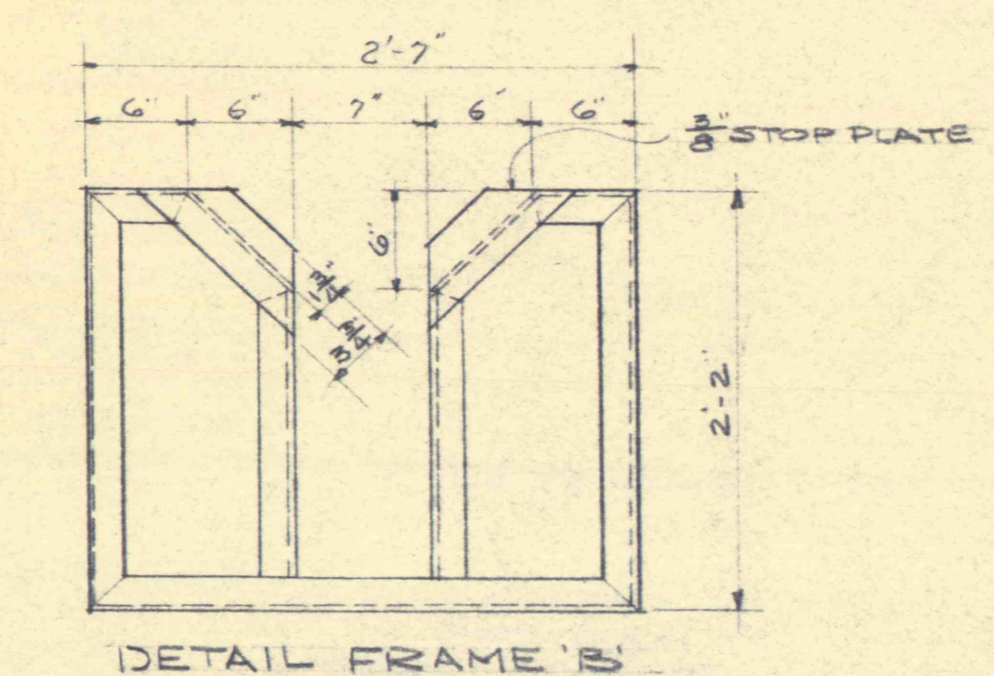
LIFTING STRAP-PART N°14 IREQ'D
SCALE 1 1/2"=1'-0"



LIFTING BEAM-PART N°10 IREQ'D
SCALE 1 1/2"=1'-0"

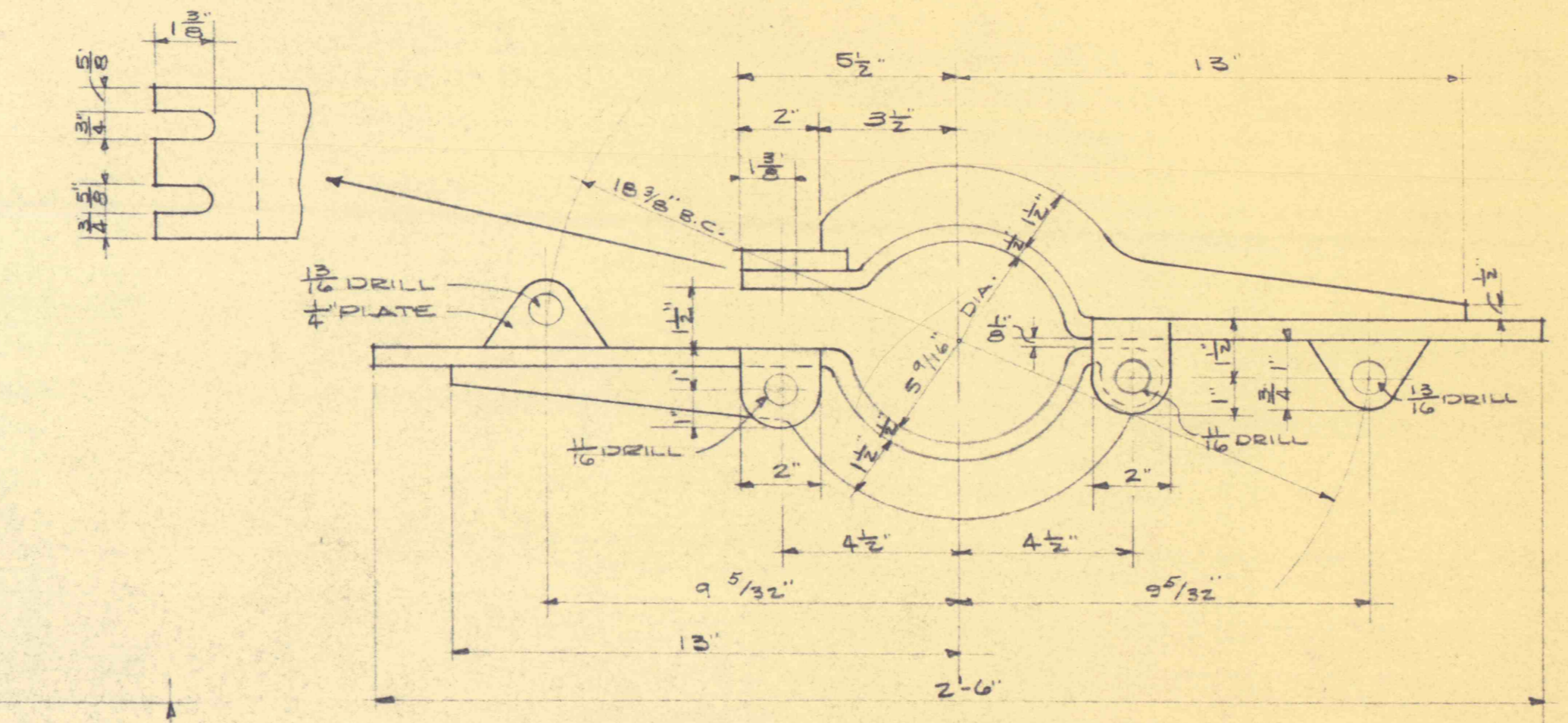


FRONT VIEW

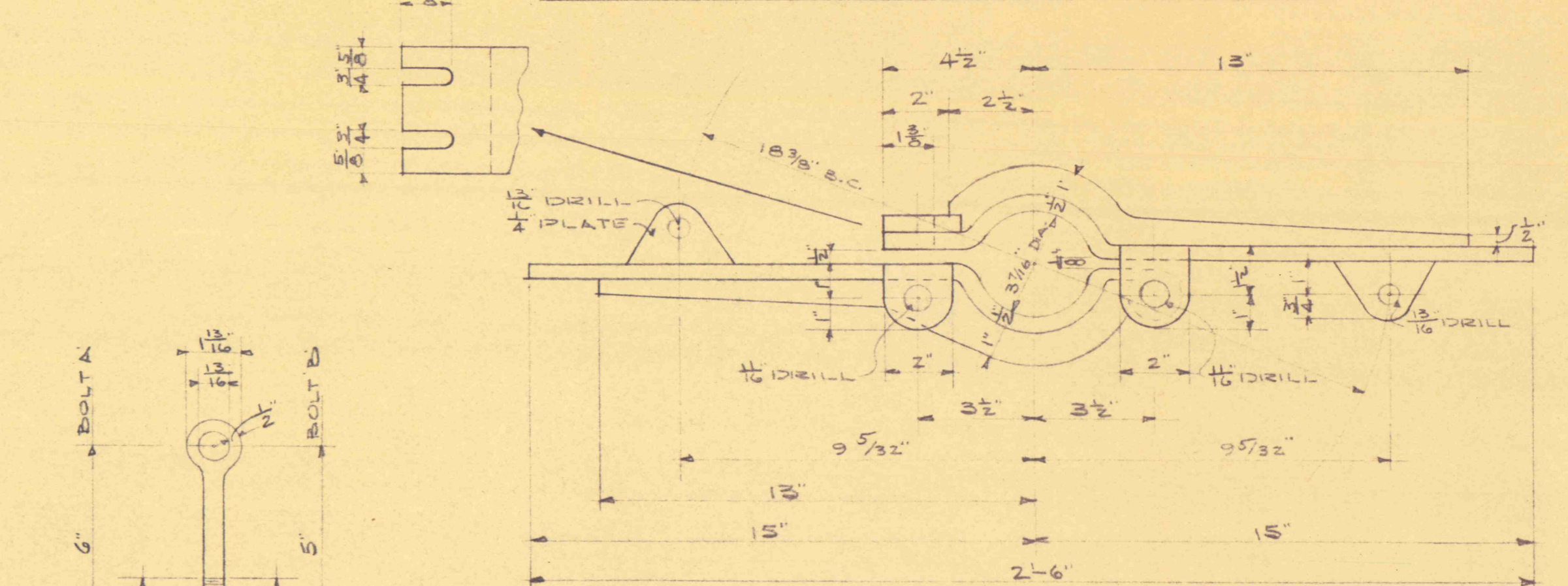


DETAIL FRAME 'B'

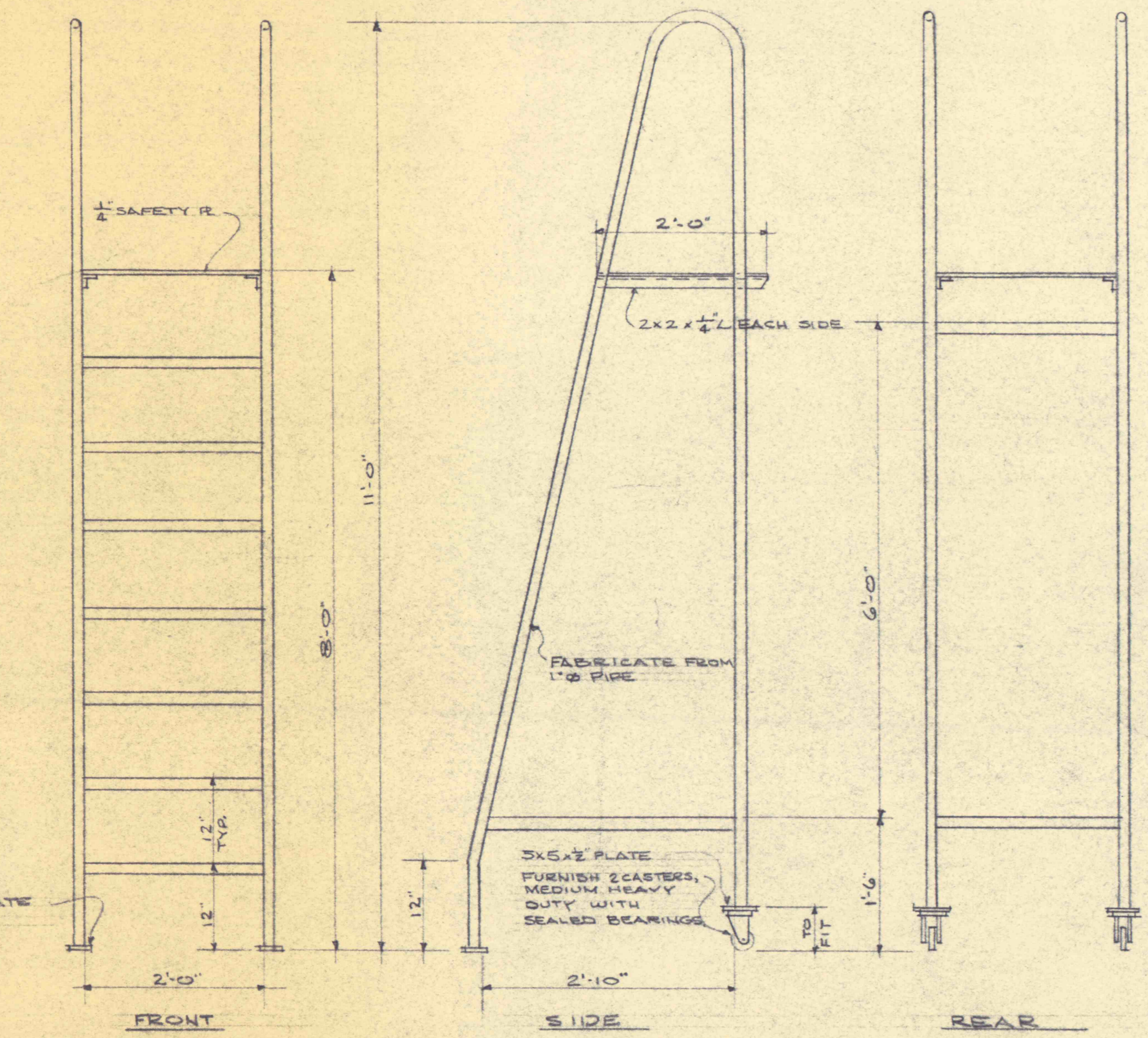
PIPE WORK BENCH-PART N°6 IREQ'D



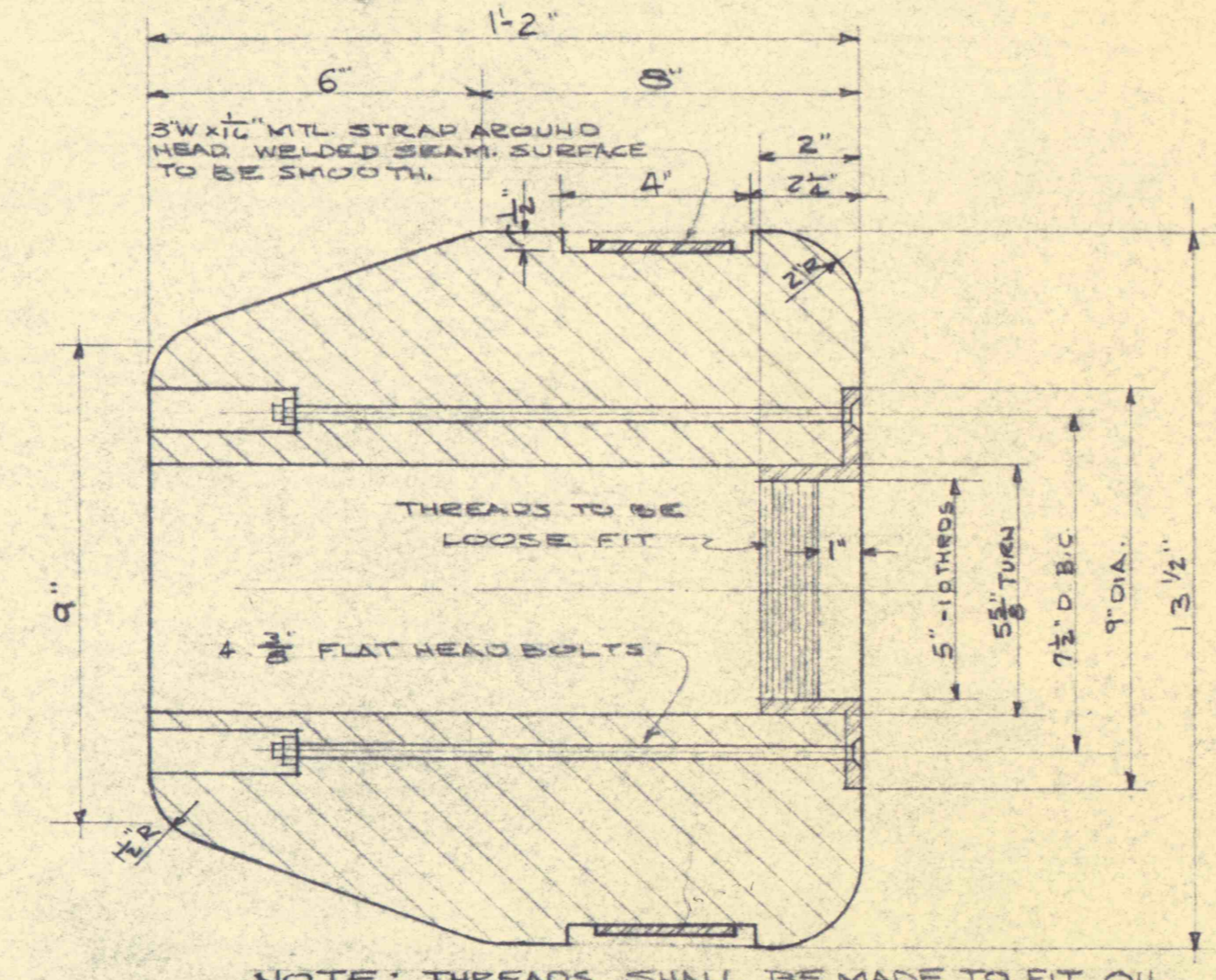
OIL TUBE CLAMP-PART N°8 IREQ'D



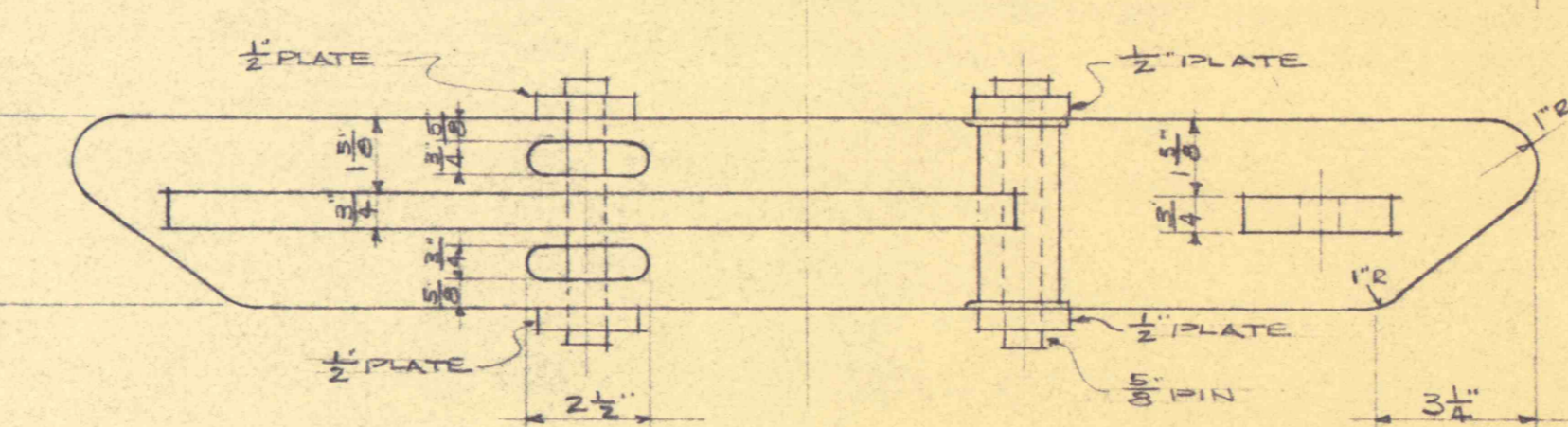
SHAFT CLAMP PART N°9 IREQ'D



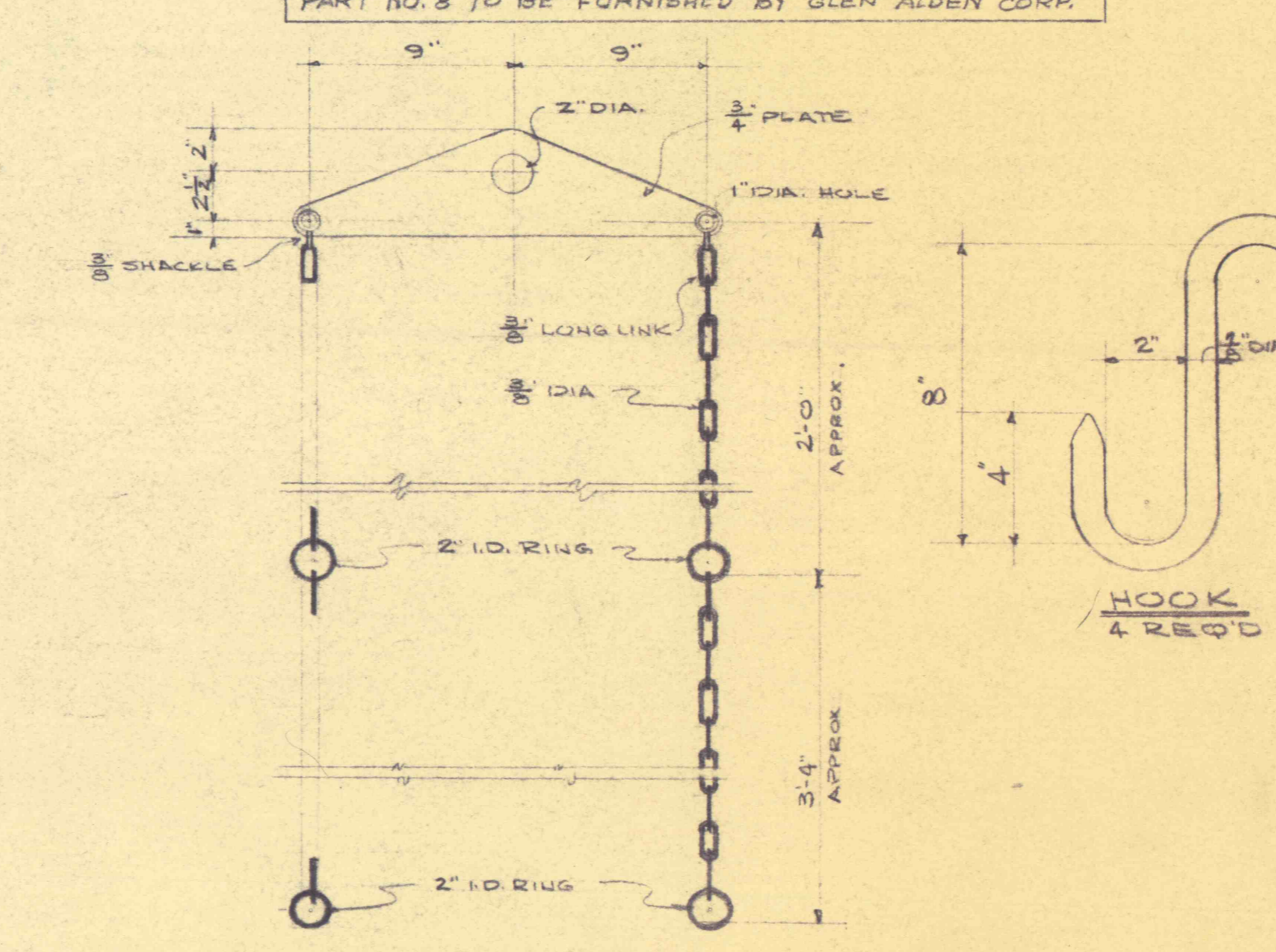
PLATFORM LADDER-PART N°7-2 REQ'D



PILOT HEAD-PART N°13 IREQ'D

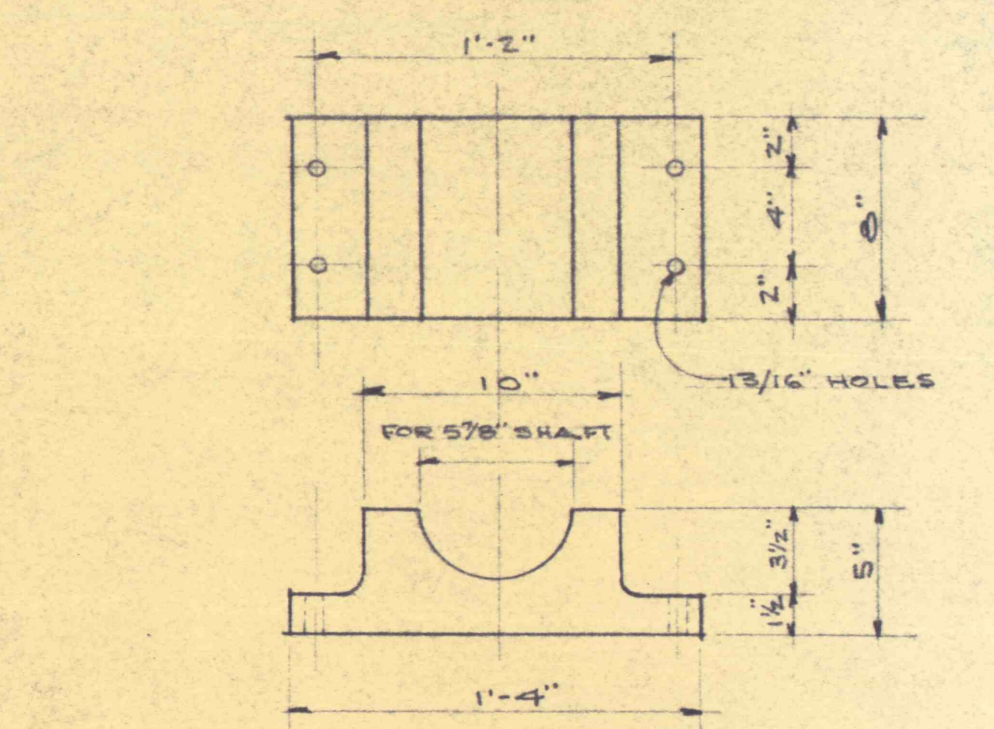


STEEL TOP HANGER PIN-PART N°16-2 REQ'D

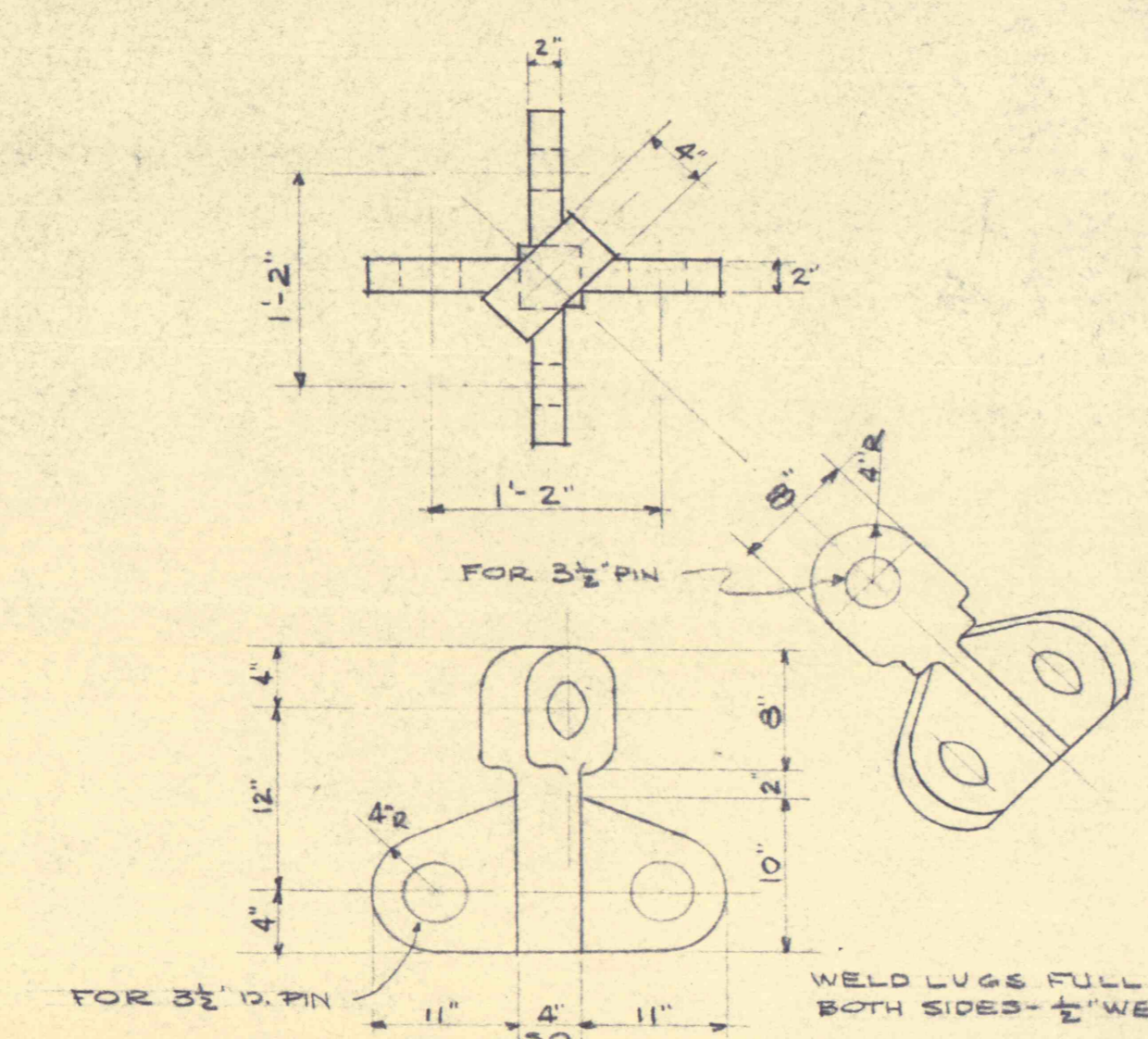


BRIDLE CHAIN ASSEMBLY - IREQ'D

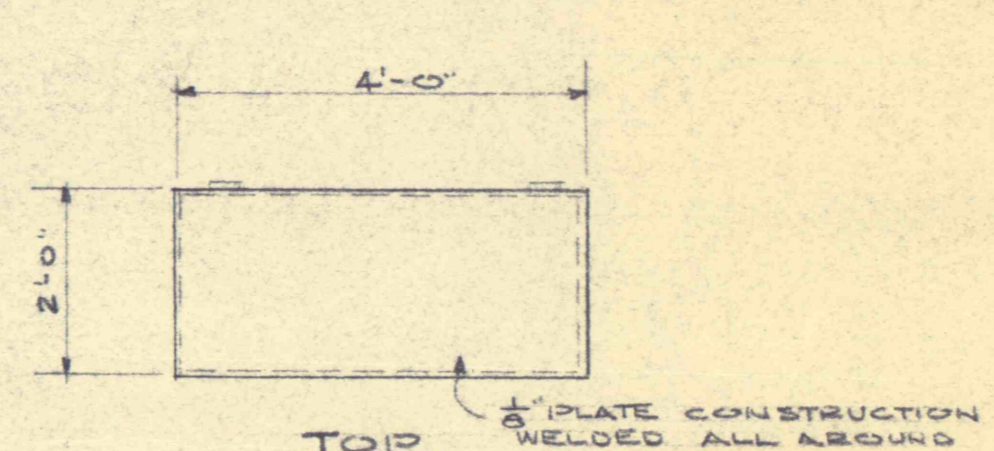
BILL OF MATERIAL		
PART NO.	PART NAME	No REQ'D
1	BLOCK & TACKLE COMPLETE	1
2	BRIDLE CHAIN ASS'Y.	1
3	HEAVY ROPE SLING	4
4	FLOOR SHEAVE	2
5	ELEVATOR	1
6	PIPE WORK BENCH	1
7	PLATFORM LADDER	2
8	OIL TUBE CLAMP	1
9	SHAFT CLAMP	1
10	LIFTING BEAM	1
11	4 WAY HANGER	1
12	PILLOW BLOCK	6
13	PILOT HEAD	1
14	LIFTING STRAP	1
15	SAFETY COVER	1
16	TOP HANGER PIN	2
17	MOTOR LIFT SLING CHAIN	1
18	HOISTING ANGLES	2
19	SUPPORT PLATE	1
20	TOOL BOX	1
21	FLOAT SCALE INDICATOR	1
22	COVER FOR FLOAT CABLE	1
23	LEAD BLOCK	1
24	SHEAVE FRAME	4
25	SHEAVE	4
26	C'WEIGHT GUARD	1
27	FLOAT COUNTER WGT.	1
28	CONCRETE FLOAT	1
29	36" RIGID STILLSON WRENCH	1
30	REVERSABLE RACHET	1
31	3/4" UNIVERSAL	1
32	REGULAR SOCKET	6
33	DROP FORGED CHAIN PIPE TONG	1
34	15" OFFSET BOX WRENCH	1
35	DOUBLE HEAD 15" OPEN END	1
36	MODEL B 3 TON PULLER	1
37	TORQUOMETER	1
38	6" STRAP WRENCH	1
39	WIRE ROPE CLAMP	1
40	LIFTING CAP	1



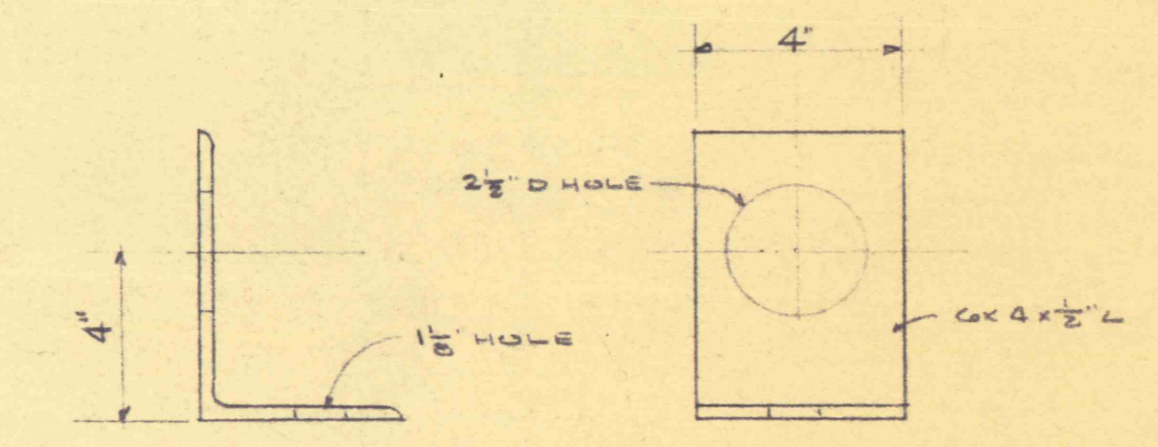
STL PILLOW BLOCK-PART N°12 2 REQ'D



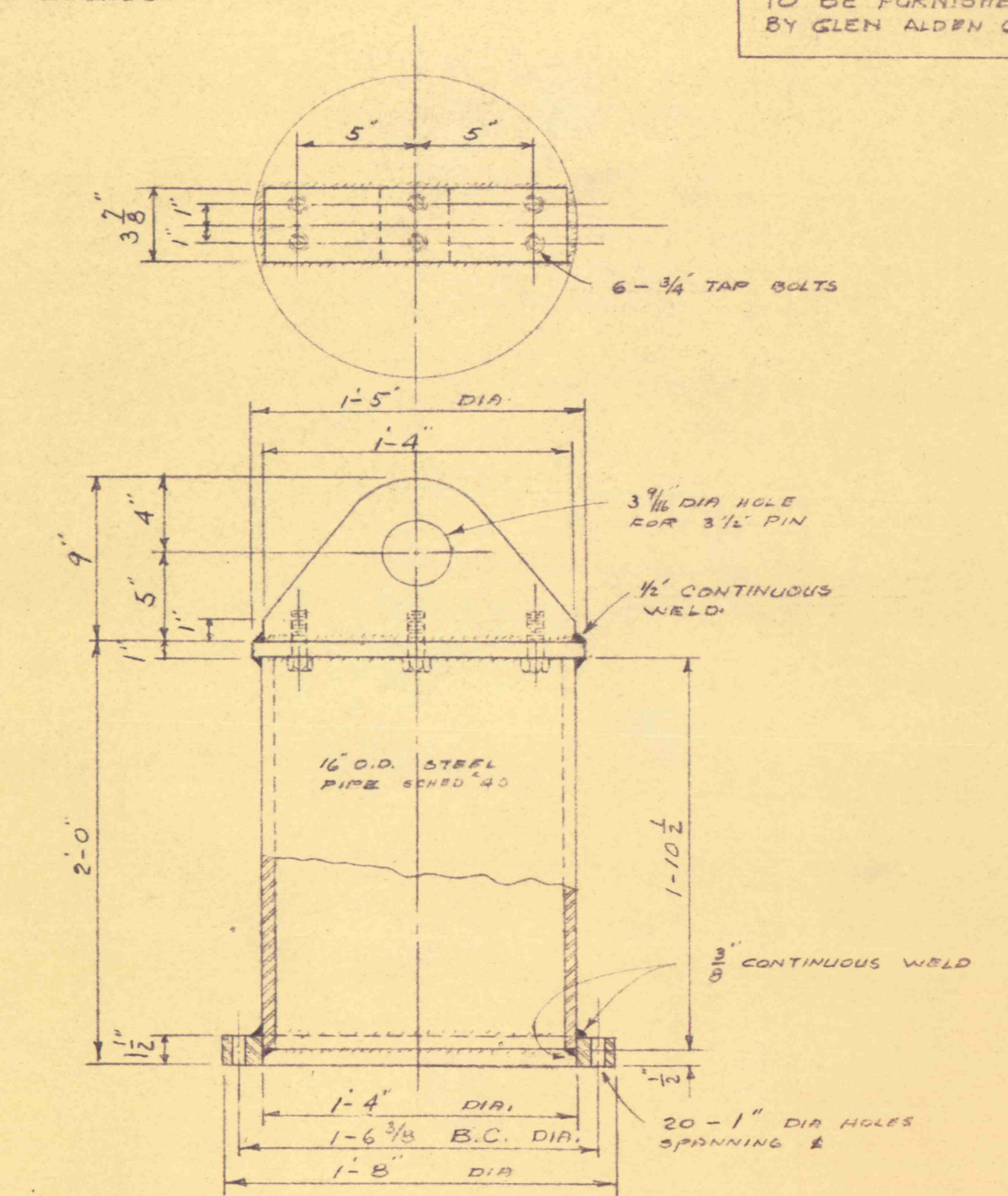
STEEL HANGER-PART N°11 IREQ'D



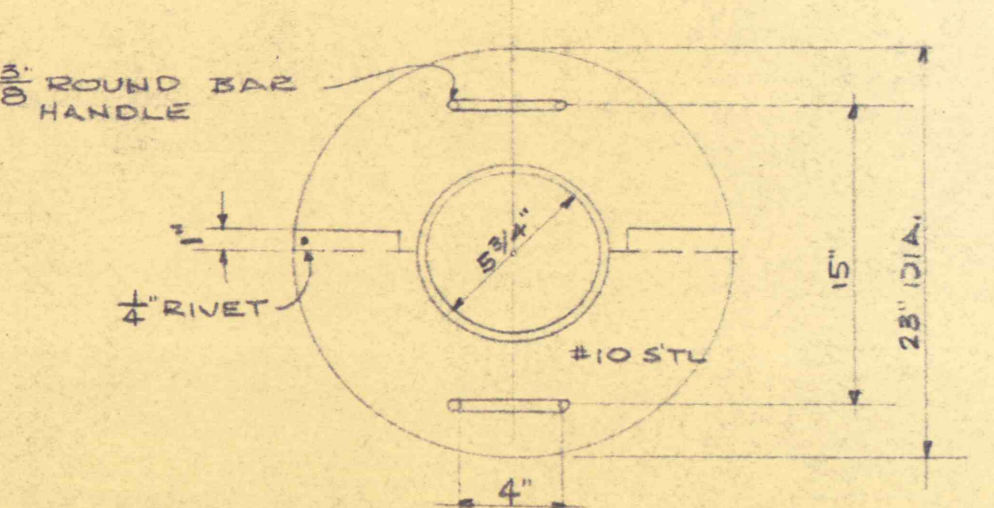
TOOL BOX DETAIL IREQ'D



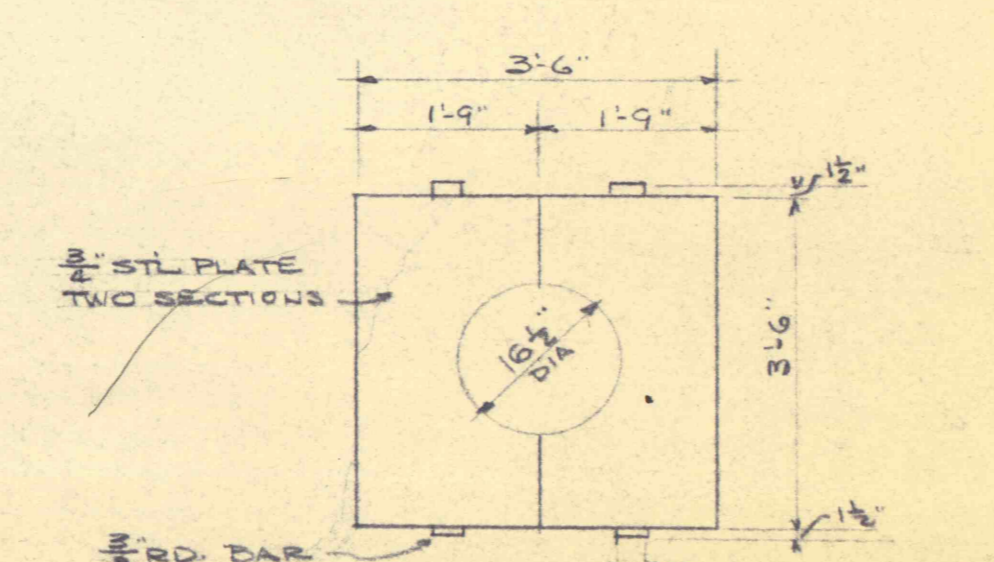
HOISTING ANGLE FOR PUMP BOWL ASSY
PART N°18 2-REQ'D



STEEL LIFTING CAP
PART N°40 IREQ'D



SAFETY COVER-PART N°15 IREQ'D



SUPPORTING PLATE FOR PUMP BOWL ASSY
PART N°19 1-REQ'D

NOTES: PARTS NOS. 8, 9, 10 TO BE FURNISHED BY GLEN ALDEN CORP.

REVISIONS
REVISED 9-18-59
REVISED 8-5-58

MISCELLANEOUS TOOLS & EQUIPMENT

FLOOD CONTROL PROJECT NO.13 PHASE B
PA. DEPT. OF MINES & MINERAL INDUSTRIES

GLEN ALDEN CORPORATION
BUTTONWOOD COLLIERY, BUTTONWOOD SH.

ROUSLEY AND SMITH

SCALE: NONE
DWS: S-B-55
DWS: S-B-55