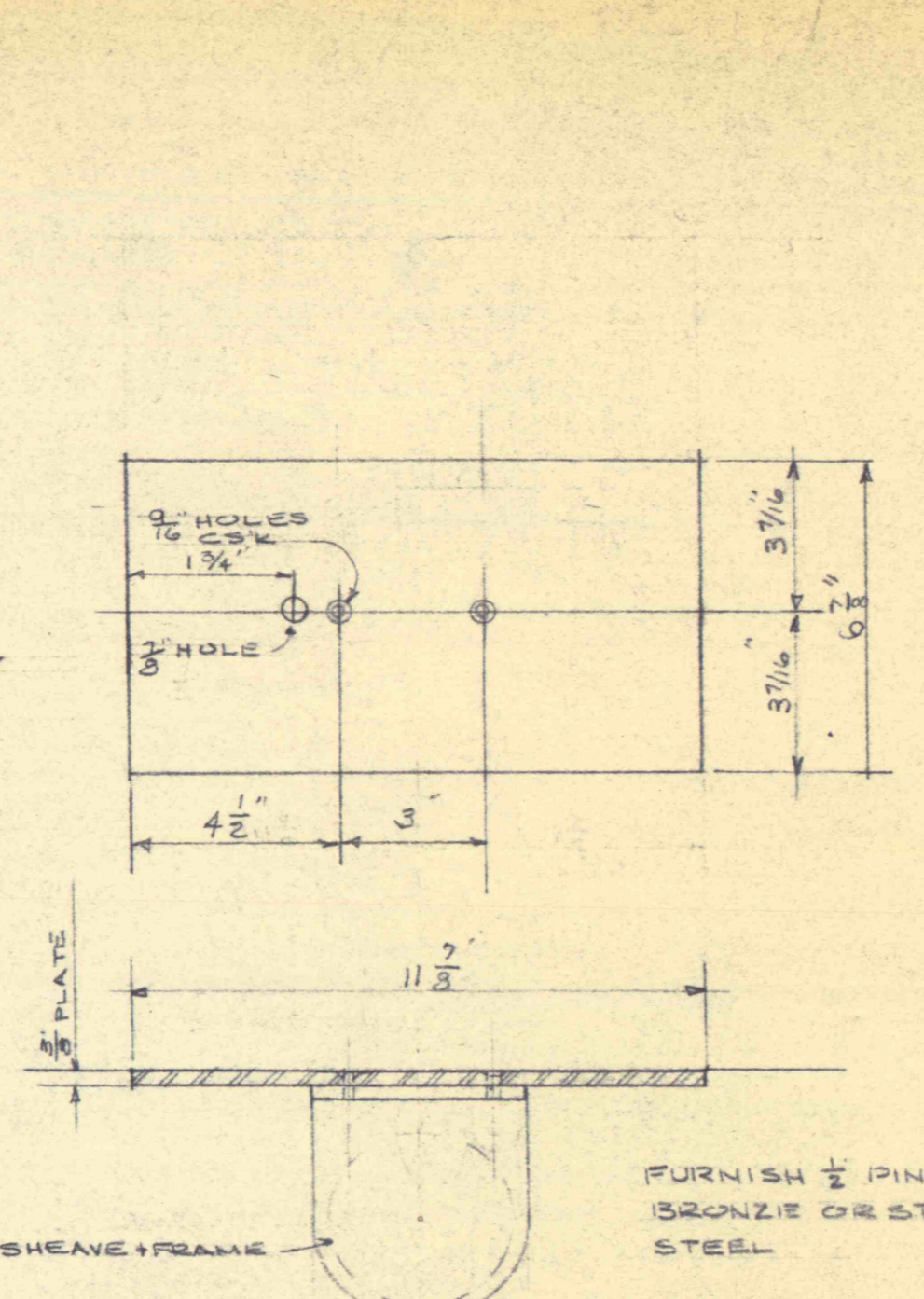
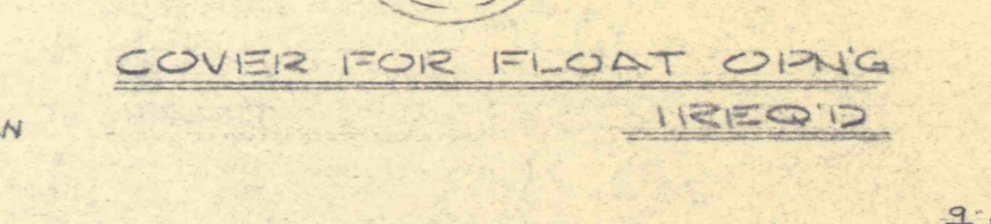


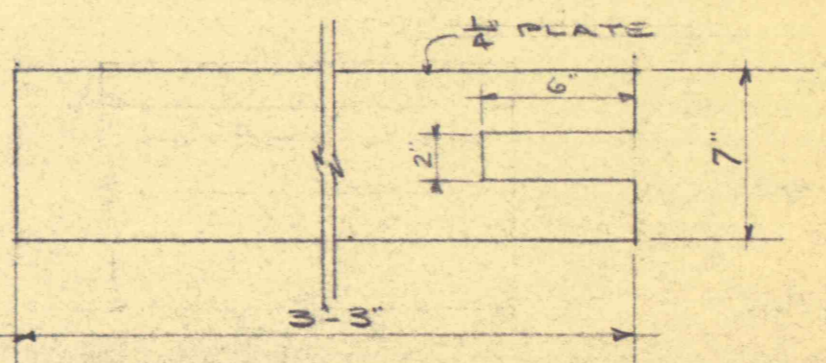
FRONT
SIDE
FLOAT SCALE - 1 REQ'D



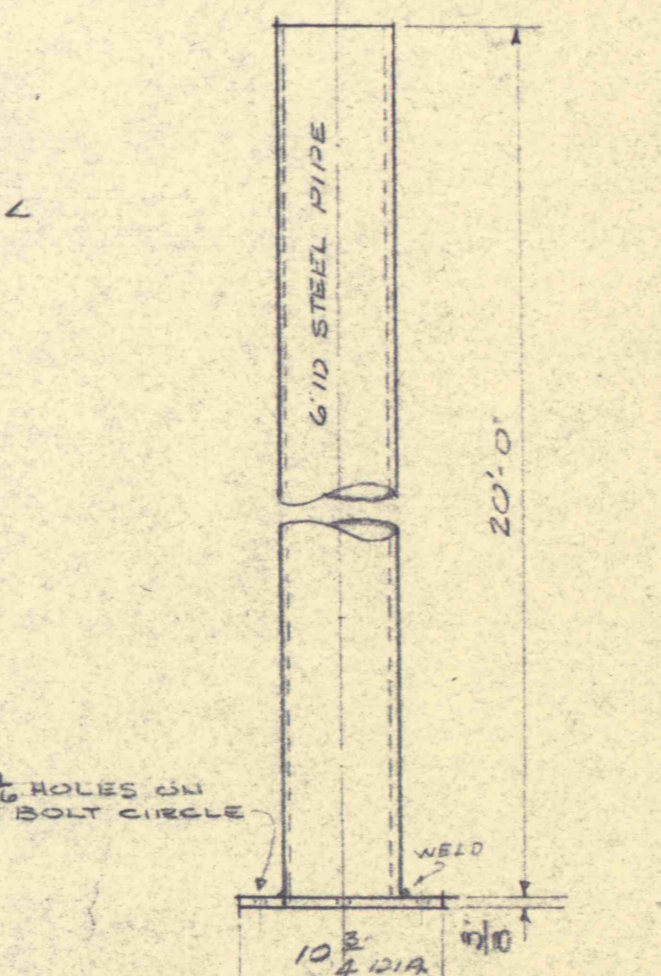
FLOAT SCALE INDICATOR 1 REQ'D



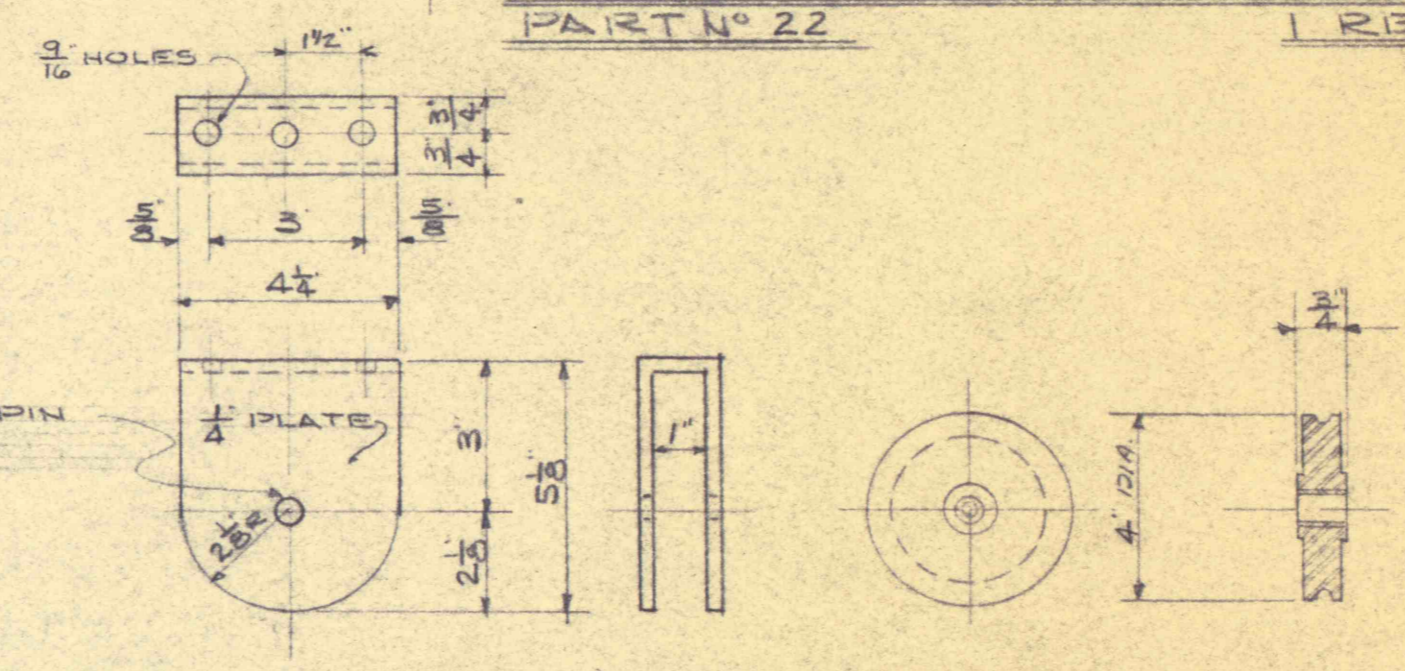
COVER FOR FLOAT PIPE 1 REQ'D



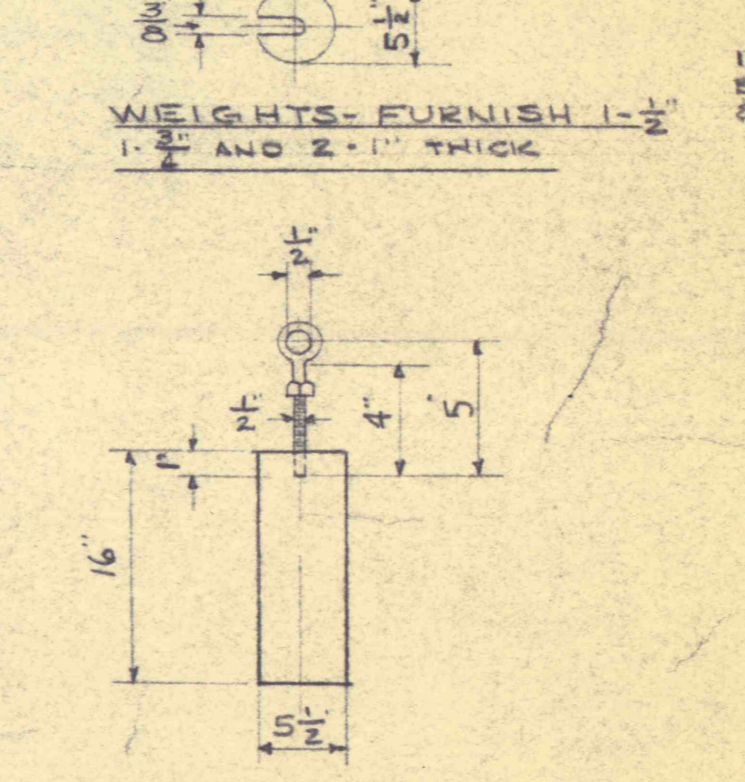
COVER FOR FLOAT CABLE AT FLOOR PART NO 22 1 REQ'D



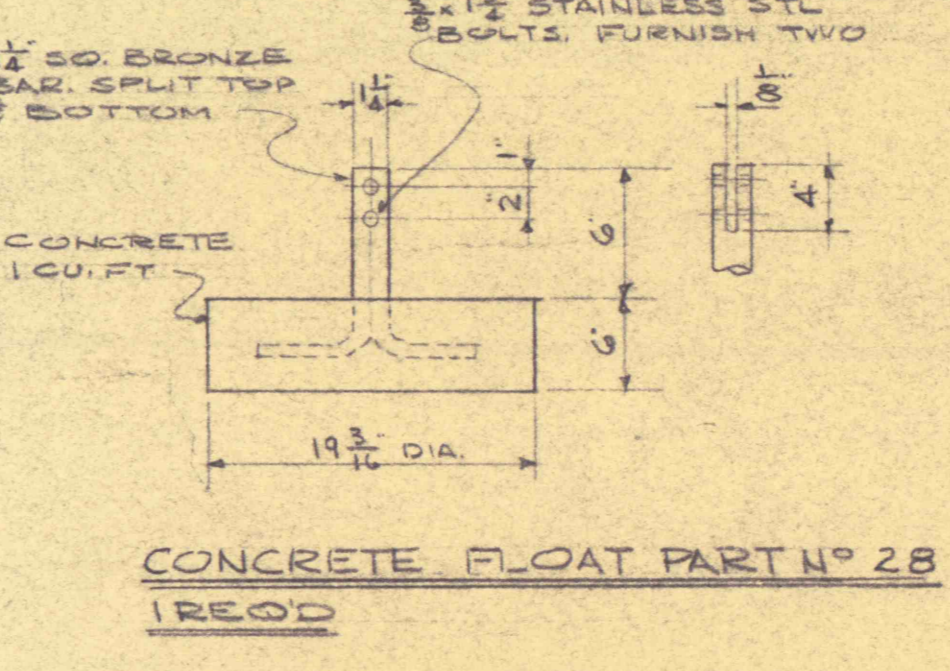
COUNTER WEIGHT GUARD - PART NO 26 1 REQ'D



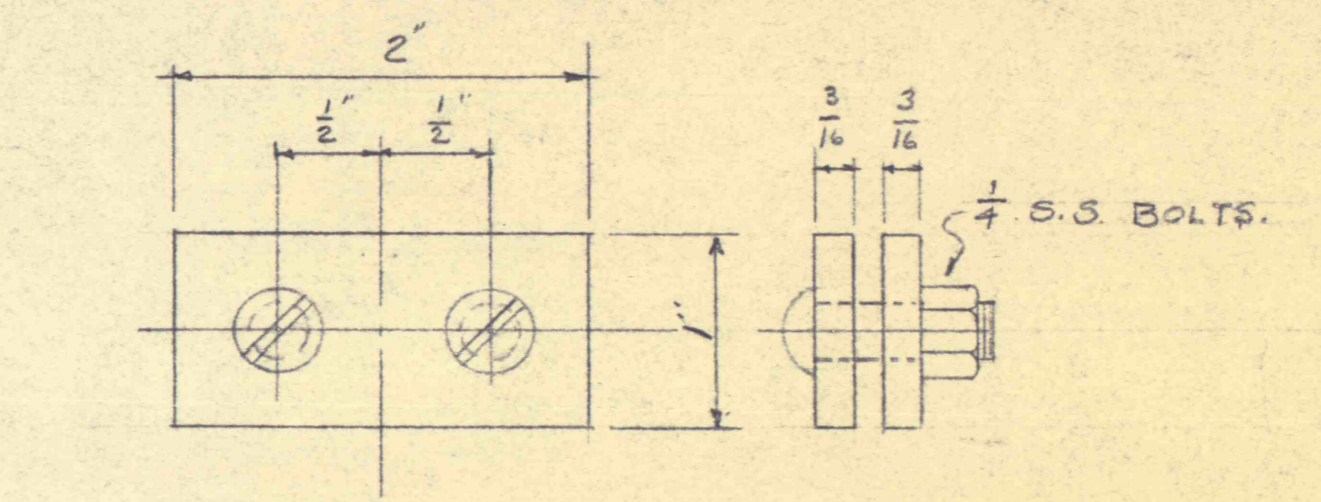
SHEAVE FRAME PART NO 24 STEEL 4 REQ'D
4\"/>



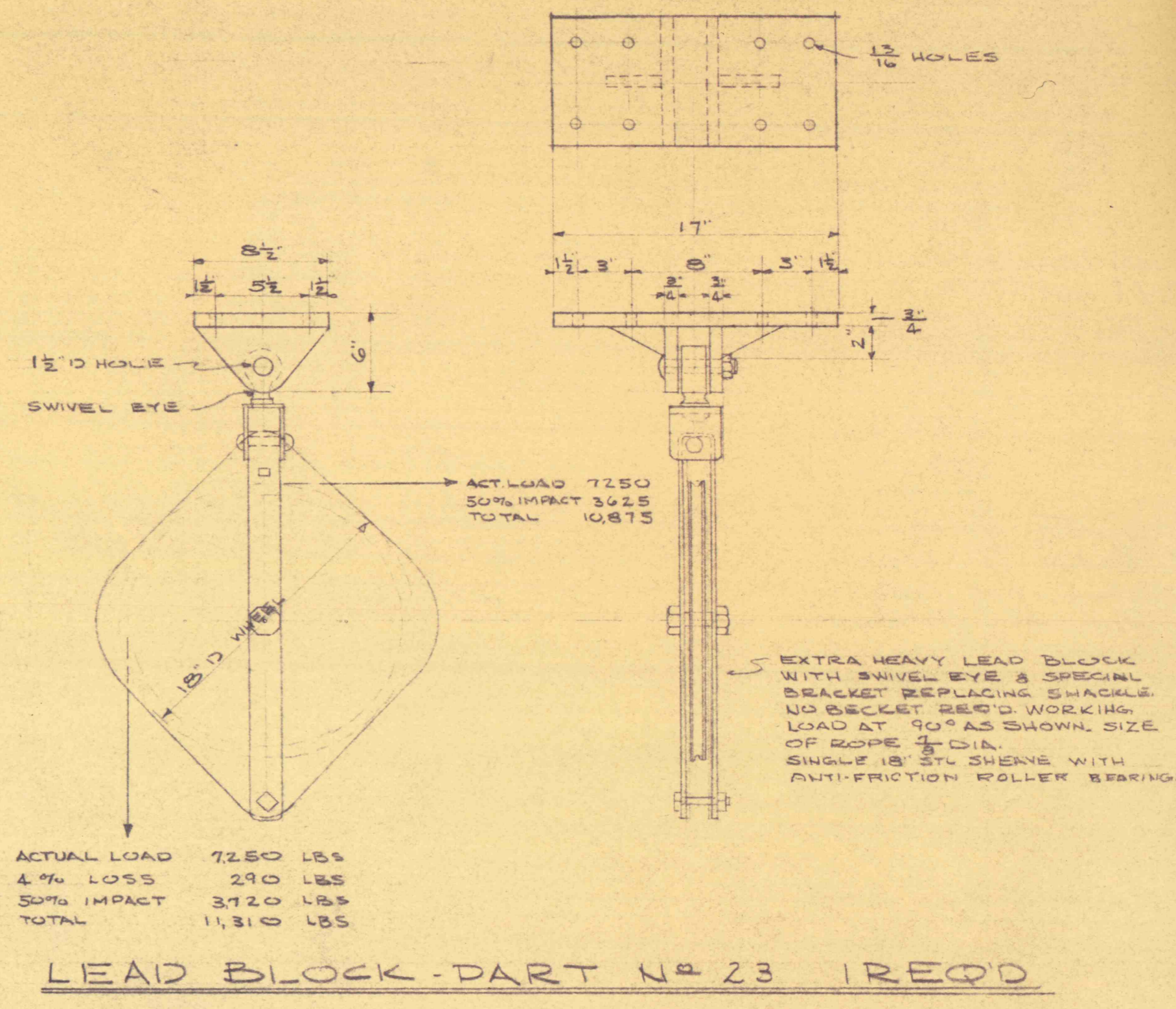
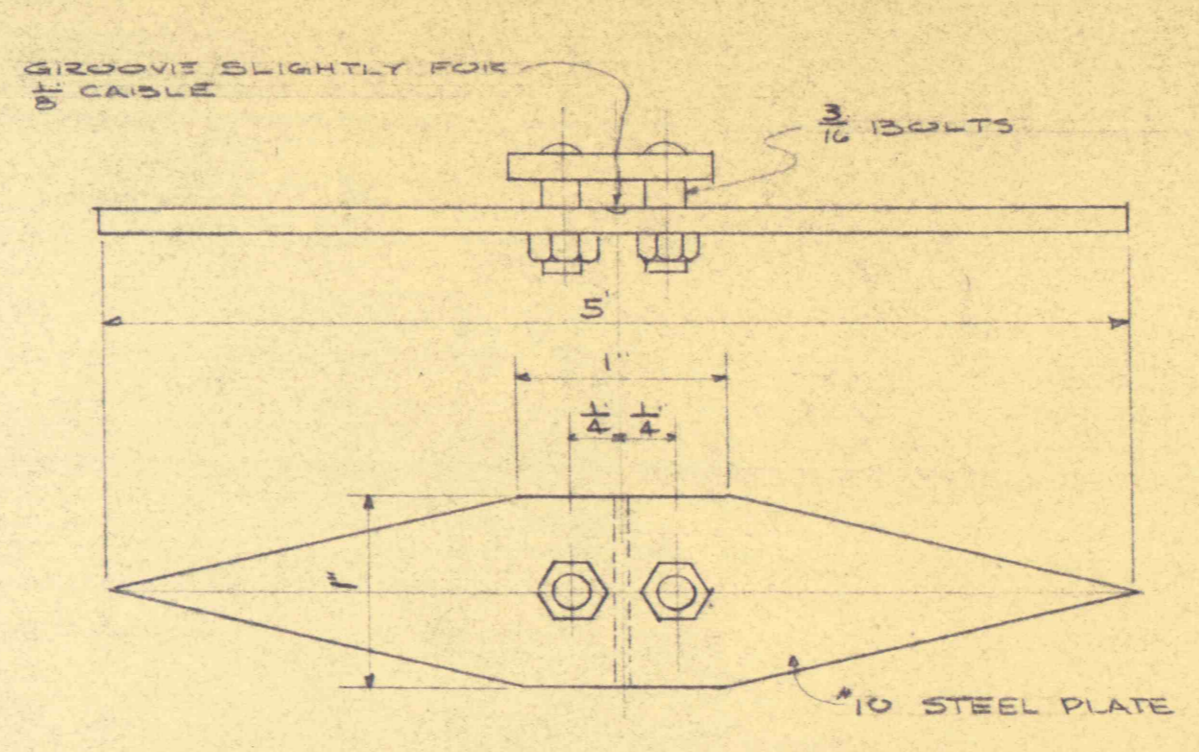
FLOAT COUNTERWEIGHT PART NO 27 STEEL 1 REQ'D



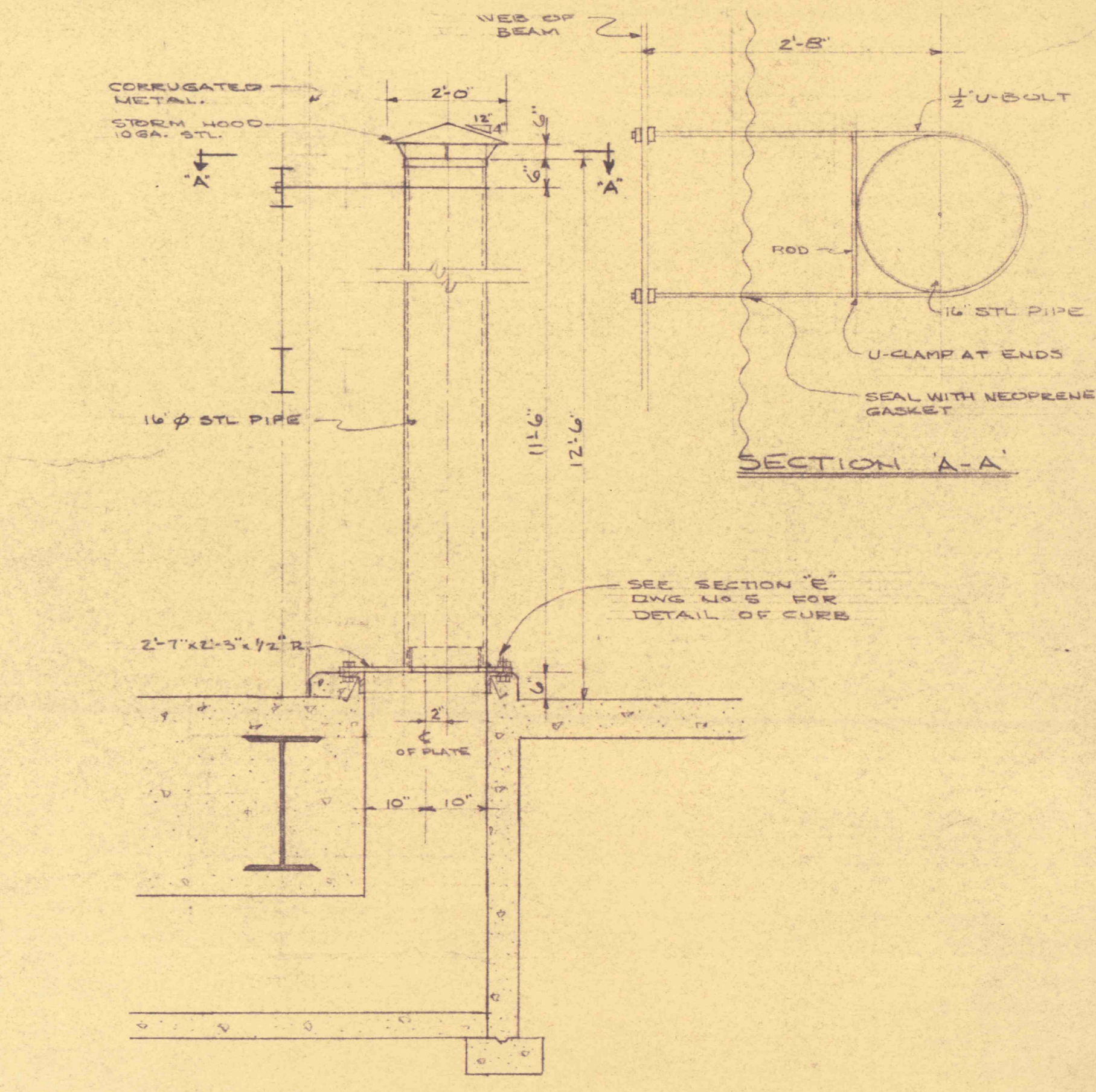
CONCRETE FLOAT PART NO 28 1 REQ'D



WIRE ROPE CLAMP PART NO 39 STAINLESS STEEL 1 REQ'D



LEAD BLOCK - PART NO 23 1 REQ'D



DETAIL OF VENT PIPE SCALE 1/2\"/>

ATTACH WIRE ROPE CLAMP AS SHOWN AT SUCH A POSITION THAT IT WILL ACT AS A STOP TO PREVENT COUNTERWEIGHT FROM REACHING THE FLOOR THUS KEEPING ROPE TENSION ON THE SHEAVES

FLOAT AND CLAMP TO BE SET THRU MANHOLE

WRAP WITH STAINLESS STEEL WIRE

WATER LEVEL

MISCELLANEOUS TOOLS & EQUIPMENT

REVISIONS	DATE	BY
REVISED	7-10-38	
REVISED	5-8-38	

FLOOD CONTROL PROJECT NO. 13 PHASE 'B'
PA. DEPT. OF MINES & MINERAL INDUSTRIES

GLEN ALDEN CORPORATION
BUTTONWOOD COLLIERY, BUTTONWOOD SHAF

ROUSHEY AND SMITH

SCALE NOTED ENGINEERS AND CONSULTANTS JOB 628
DATE 5-8-38 100 MARKET STREET KINGSTON, PENNA. Dwg. No. 10
BY B

