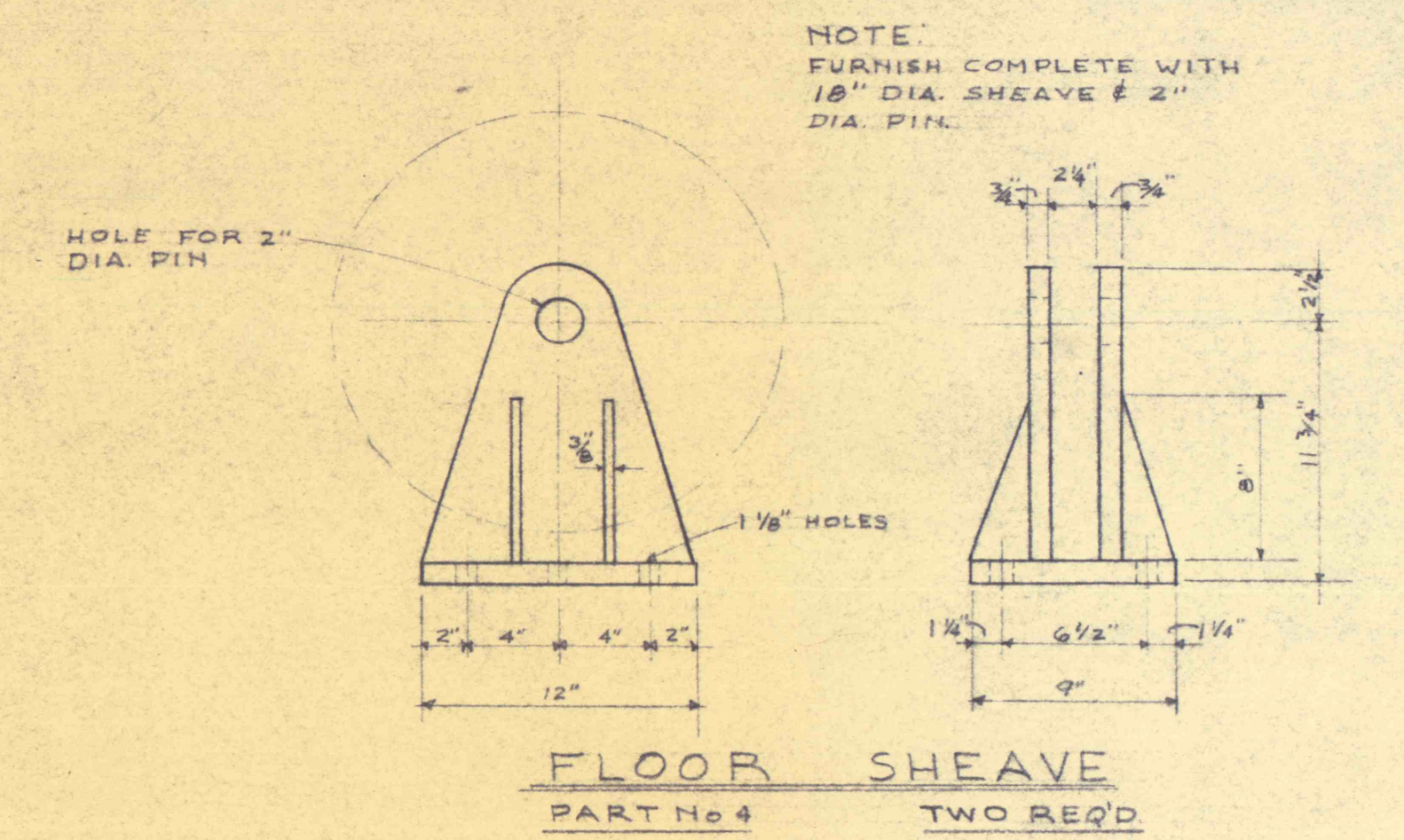
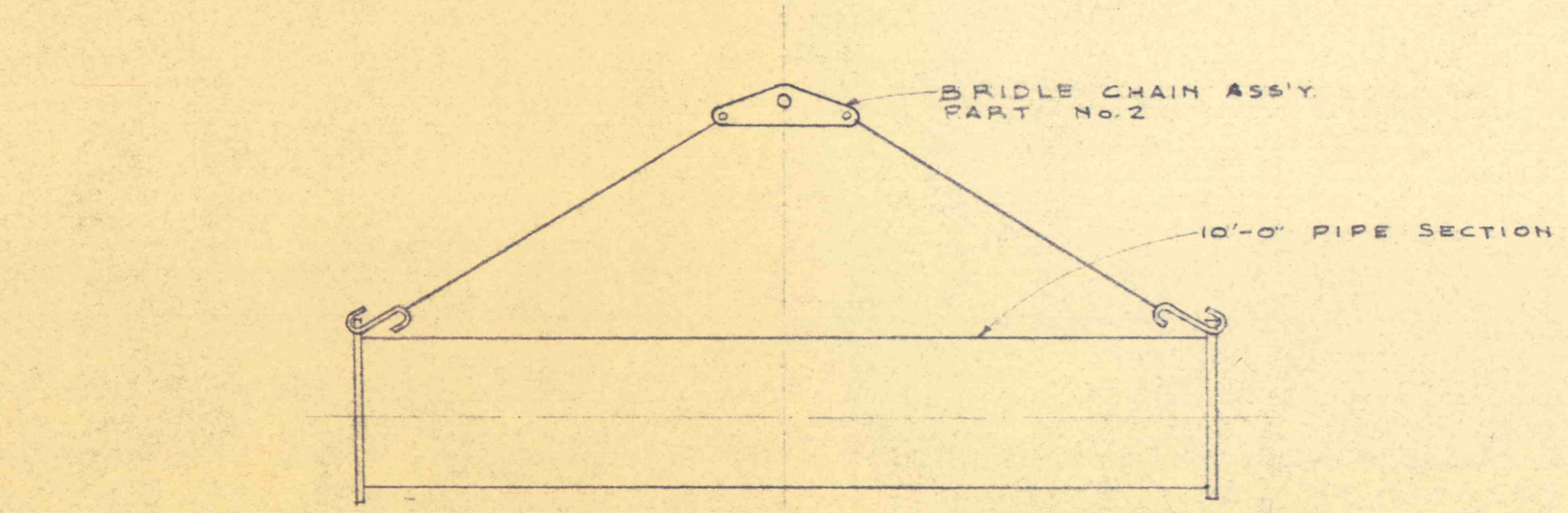


BLOCK & TACKLE ASS'Y-LIFT OF COLUMN PIPE
SCALE 1/2" = 1'-0"

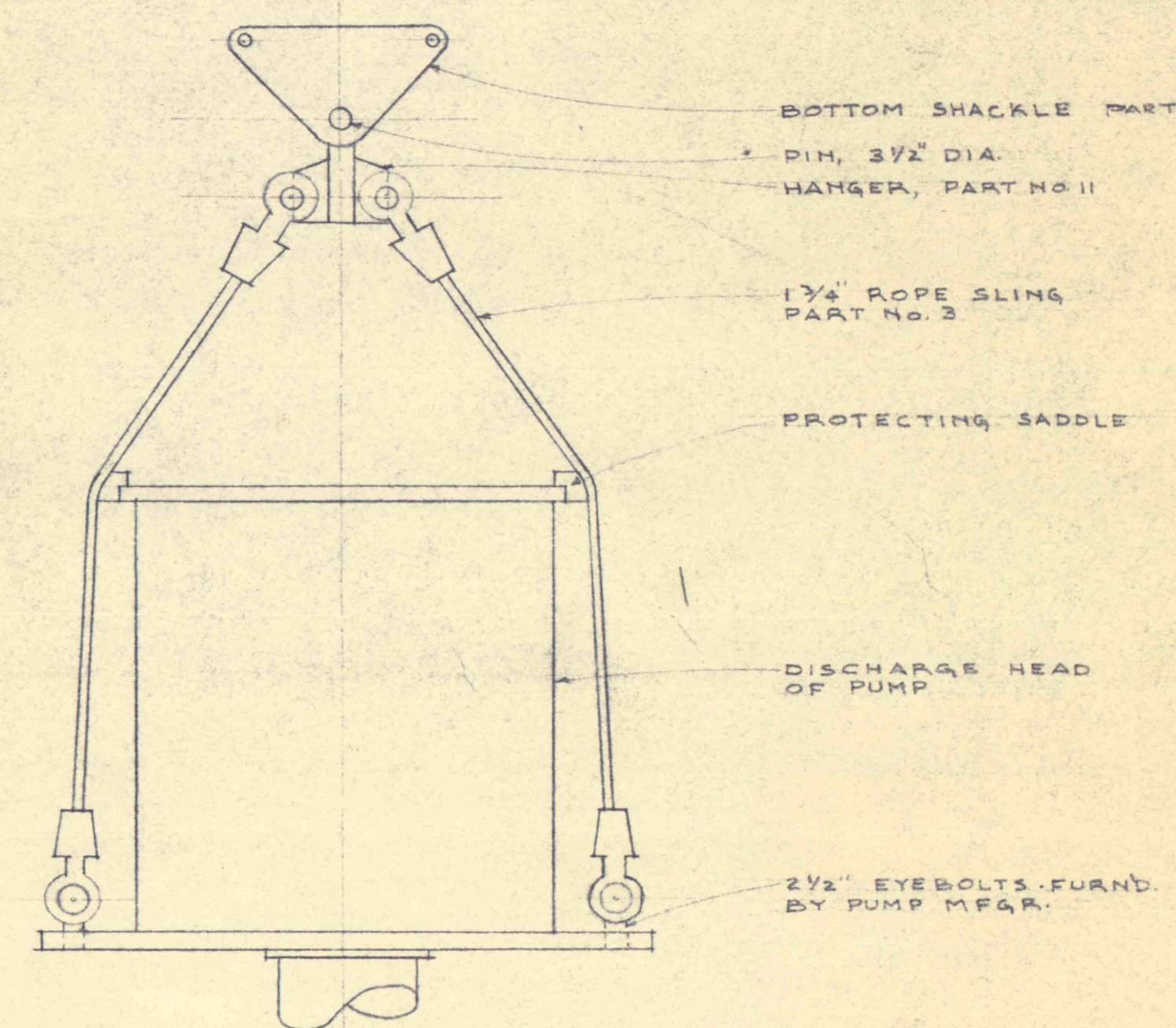


FLOOR SHEAVE
PART No 4 TWO REQ'D

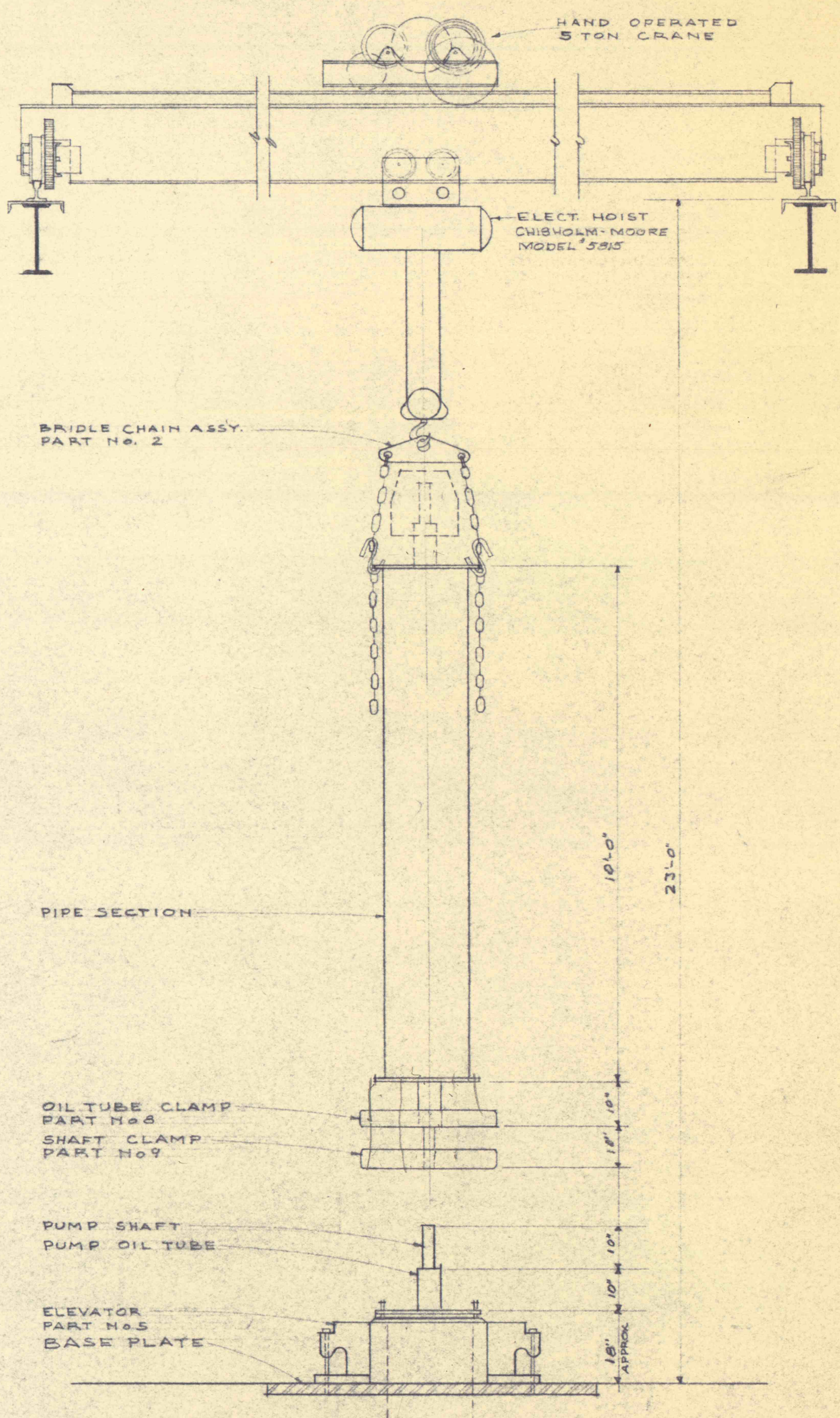


HANDLING PIPE FROM BENCH TO STORAGE RACK

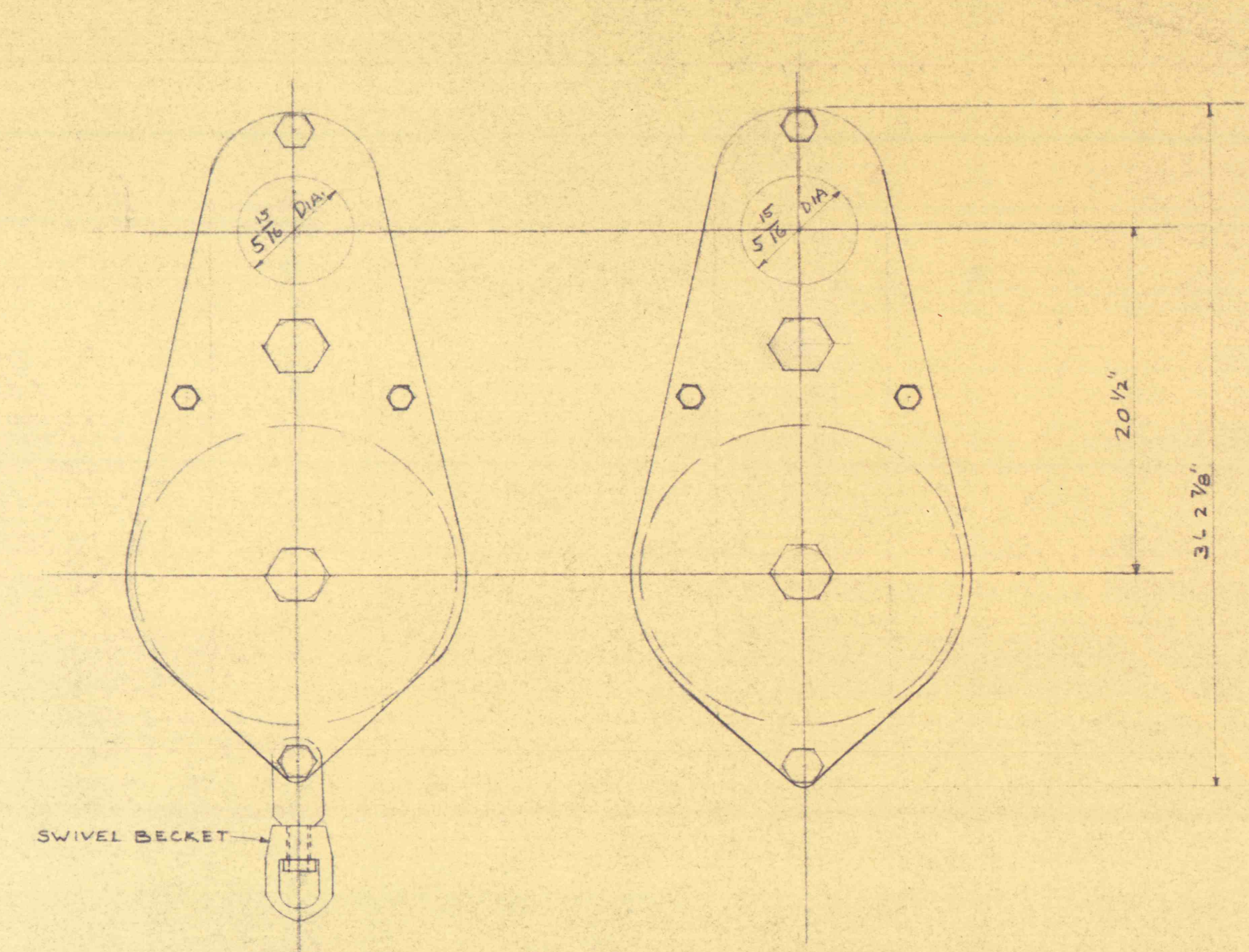
NOTE: FURNISH COMPLETE WITH 1 1/2\"/>



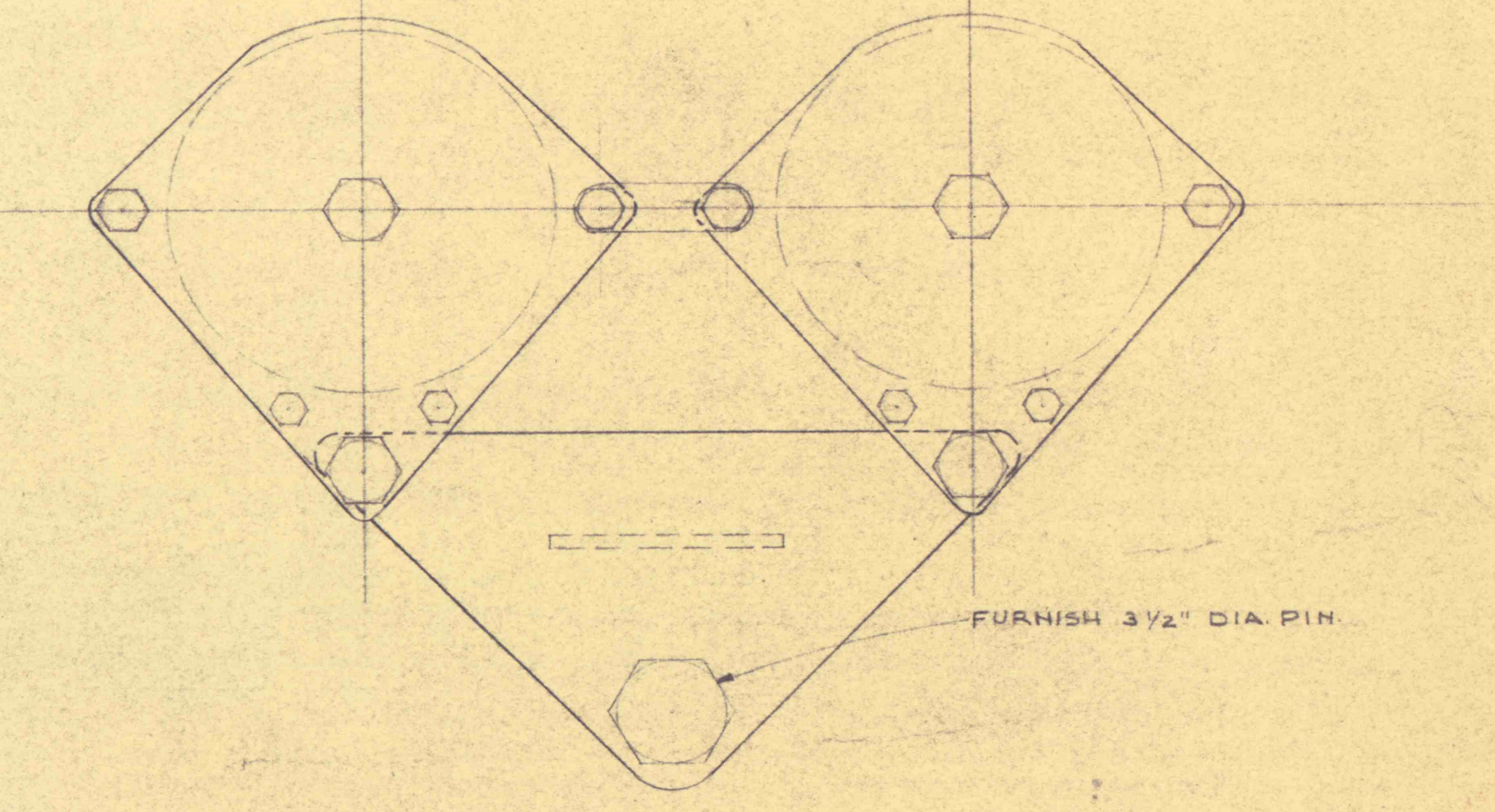
BLOCK & TACKLE LIFT OF ENTIRE PUMP BY DISCHARGE HEAD



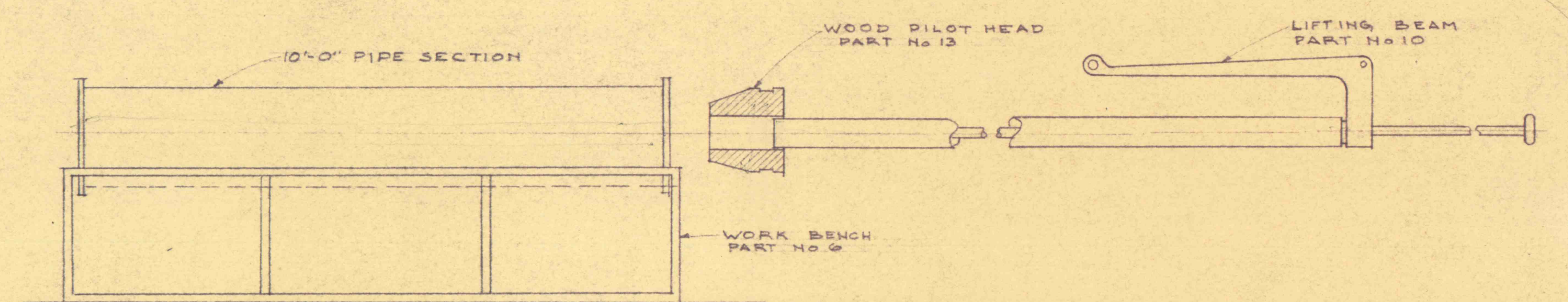
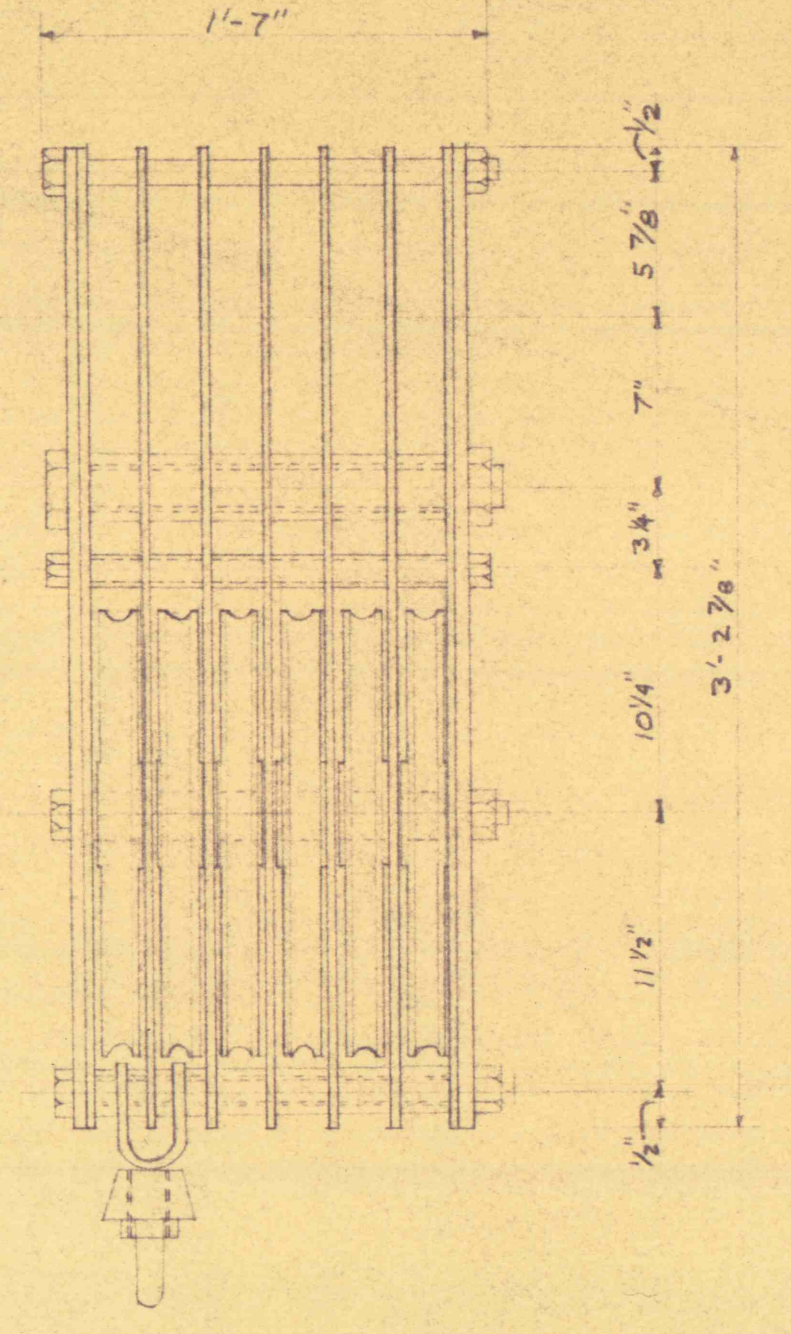
HANDLING PIPE UNITS WITH 5 TON CRANE & ELECTRIC HOIST
SCALE 1/2" = 1'-0"



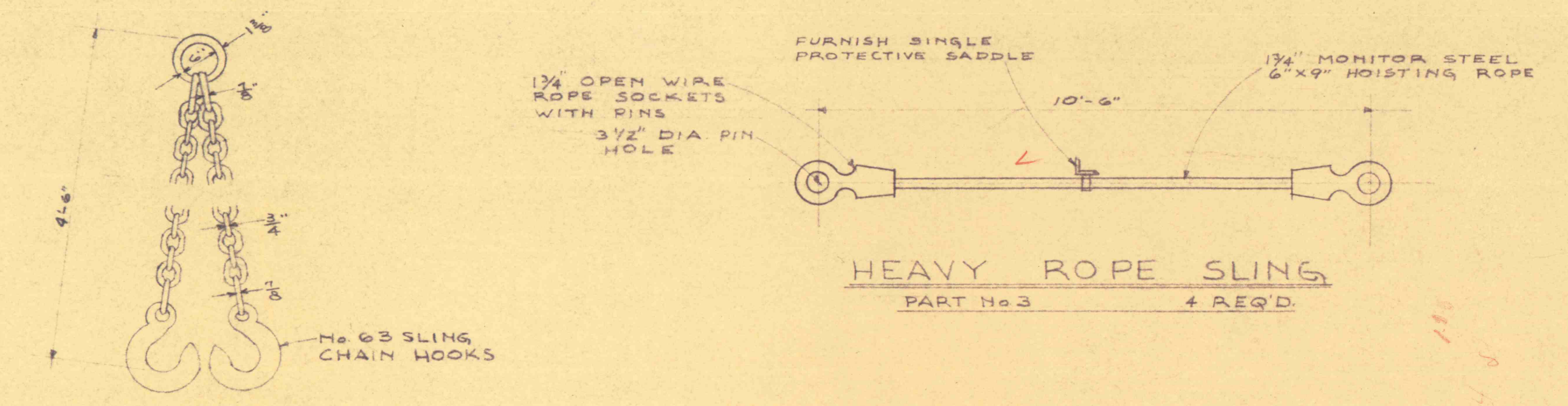
TOP SHACKLE BLOCK ASS'Y
PART No 1 2 REQ'D



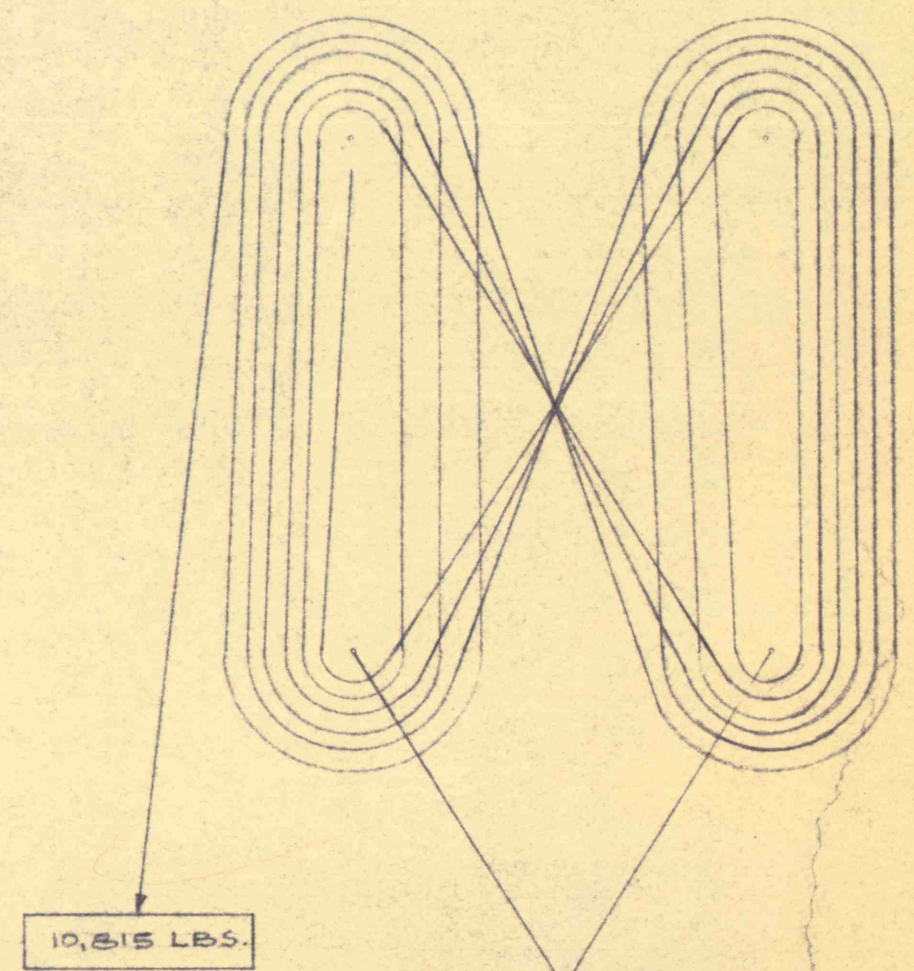
BOTTOM SHACKLE BLOCK ASS'Y
PART No 1 2 REQ'D



ASSY OF SHAFT & OIL TUBE INTO DISCHARGE HEAD



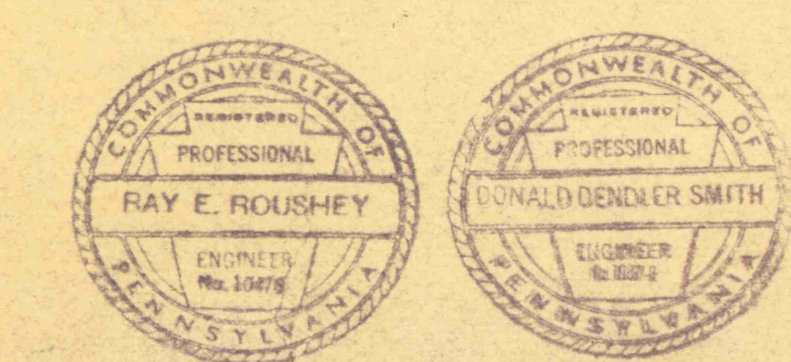
HEAVY ROPE SLING
PART No 3 4 REQ'D



MOTOR LIFT SLING CHAIN
PART No 17 ONE REQ'D

| | |
|-------------------|-------------|
| PUMP LIFTING HEAD | 103,600 LBS |
| 50% IMPACT | 52,080 LBS |
| TOTAL | 155,680 LBS |

METHOD OF REEVING FOR 24 SHEAVE SHACKLE BLOCK



REVISIONS

| | | |
|-----------|------|----|
| REVISIONS | DATE | BY |
| | | |

PUMP HANDLING TOOLS & EQUIPMENT

FLOOD CONTROL PROJECT NO. 13, PHASE 'B'
PA. DEPT. OF MINES & MINERAL INDUSTRIES

GLEN ALDEN CORPORATION
BUTTONWOOD COLLIERY, BUTTONWOOD SHAFT

ROUSHEY AND SMITH
ENGINEERS AND CONSULTANTS
180 MARKET STREET, KINGSTON, PENNA.

DATE: 5-8-58
BY: KE/ES

DWG. No. 9