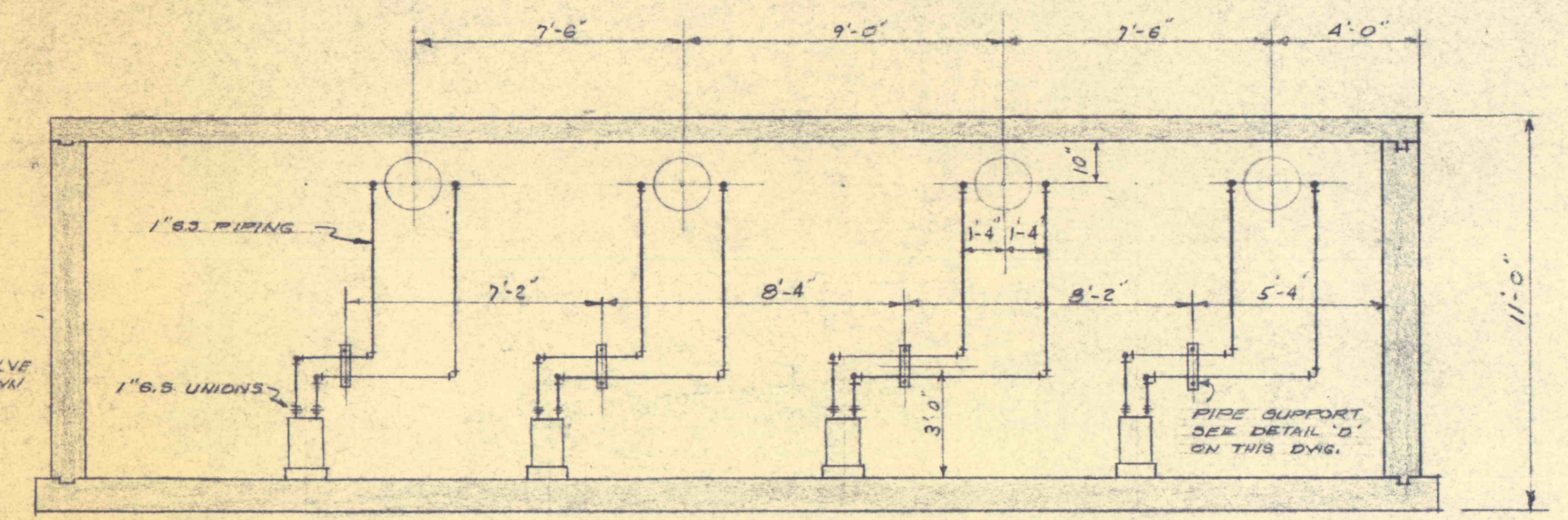


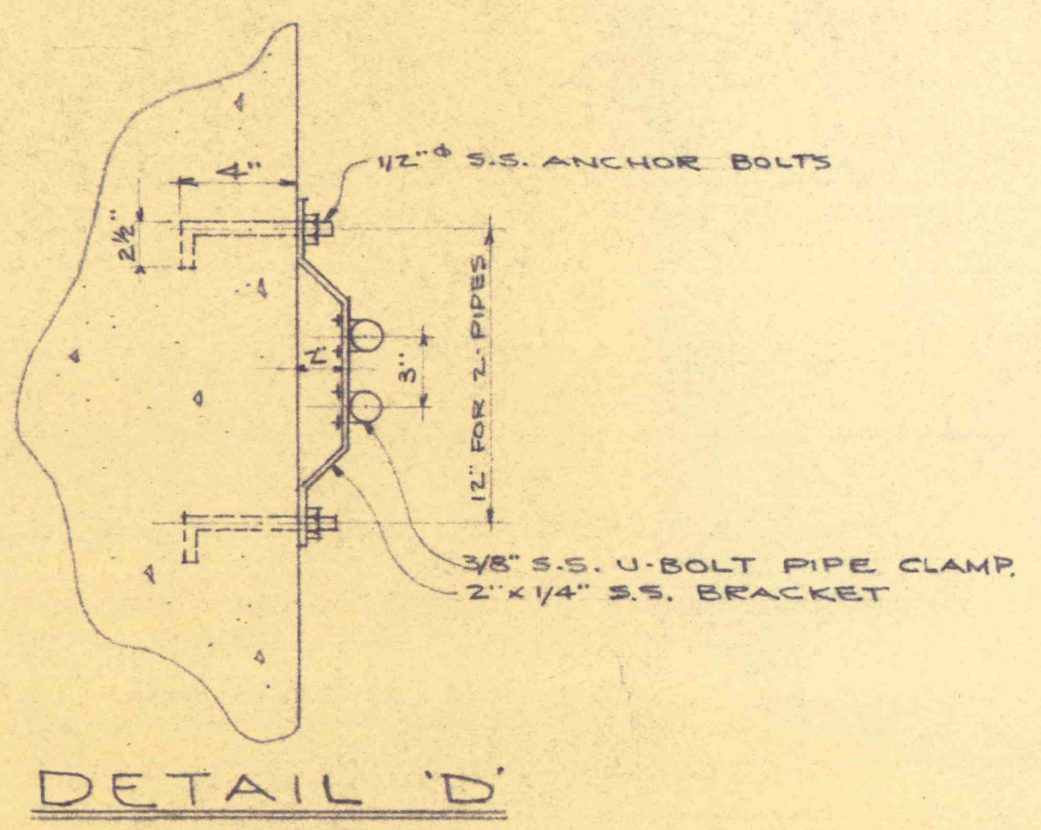
NOTE
 PUMP DISCHARGE PIPE SHALL BE 10" CLASS 150 FLANGED CAST IRON PIPE. FLANGE AT THE PUMP TO BE FOR CLASS 250. FLANGES AT SUMP TO BE SPECIAL FLANGE FOR USE WITH 2 1/2" ORIFICE PLATE FOR FLOW MEASUREMENT.

THIS SECTION OF PIPE SHALL BE REMOVED WHEN WORKING ON PUMP.
 1" UNION
 1" DRAIN VALVE TYPICAL FOR ALL PUMPS.
 1" COPPER PIPE FROM MOTOR TO A POINT APPROX. 10" OUTSIDE OF SUMP. 1" S.S. PIPE FROM THIS POINT TO THE OIL COOLING COILS IN THE SUMP TYPICAL FOR ALL PUMPS.

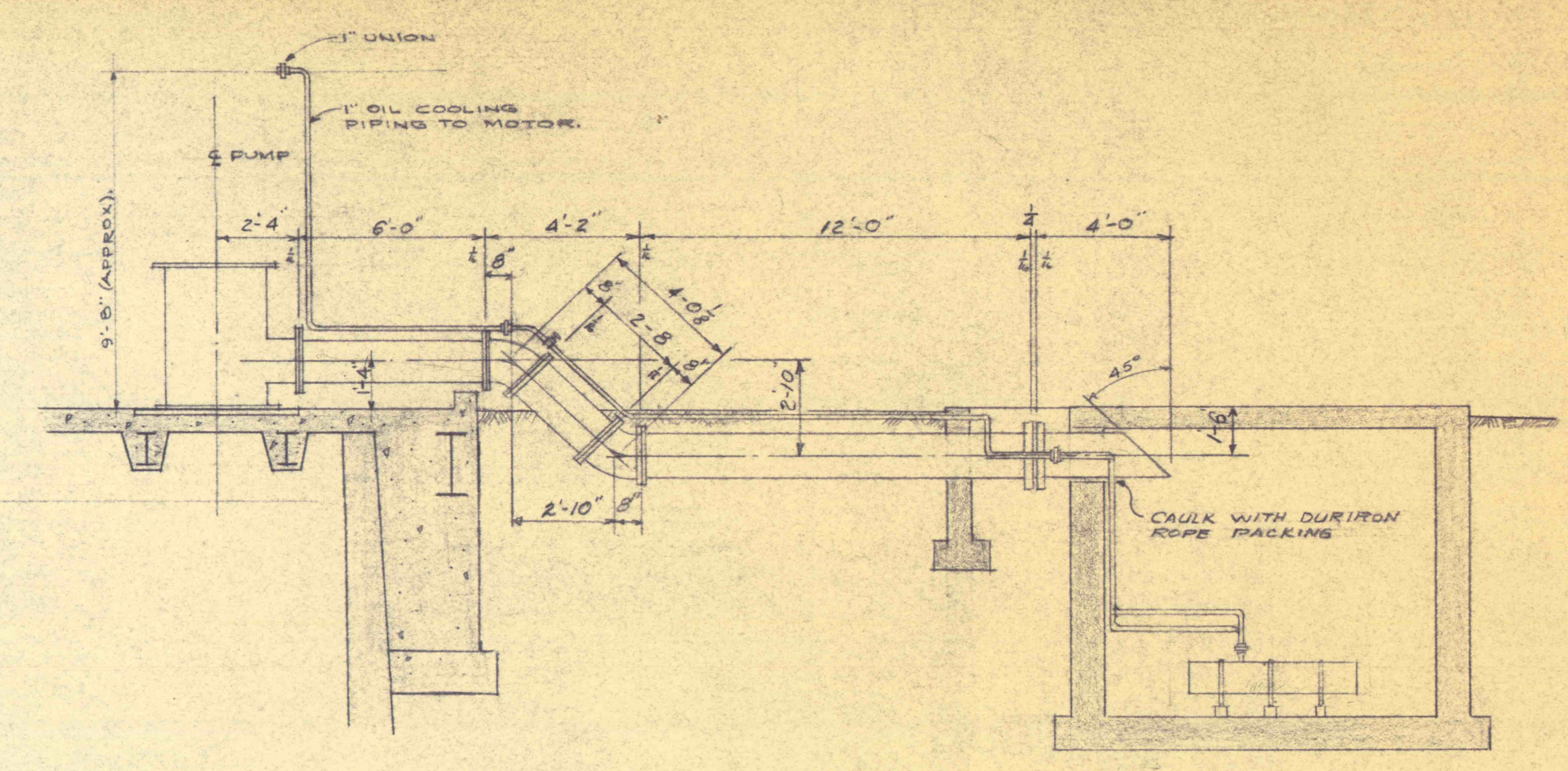
PLAN
 SCALE 1/4" = 1'-0"



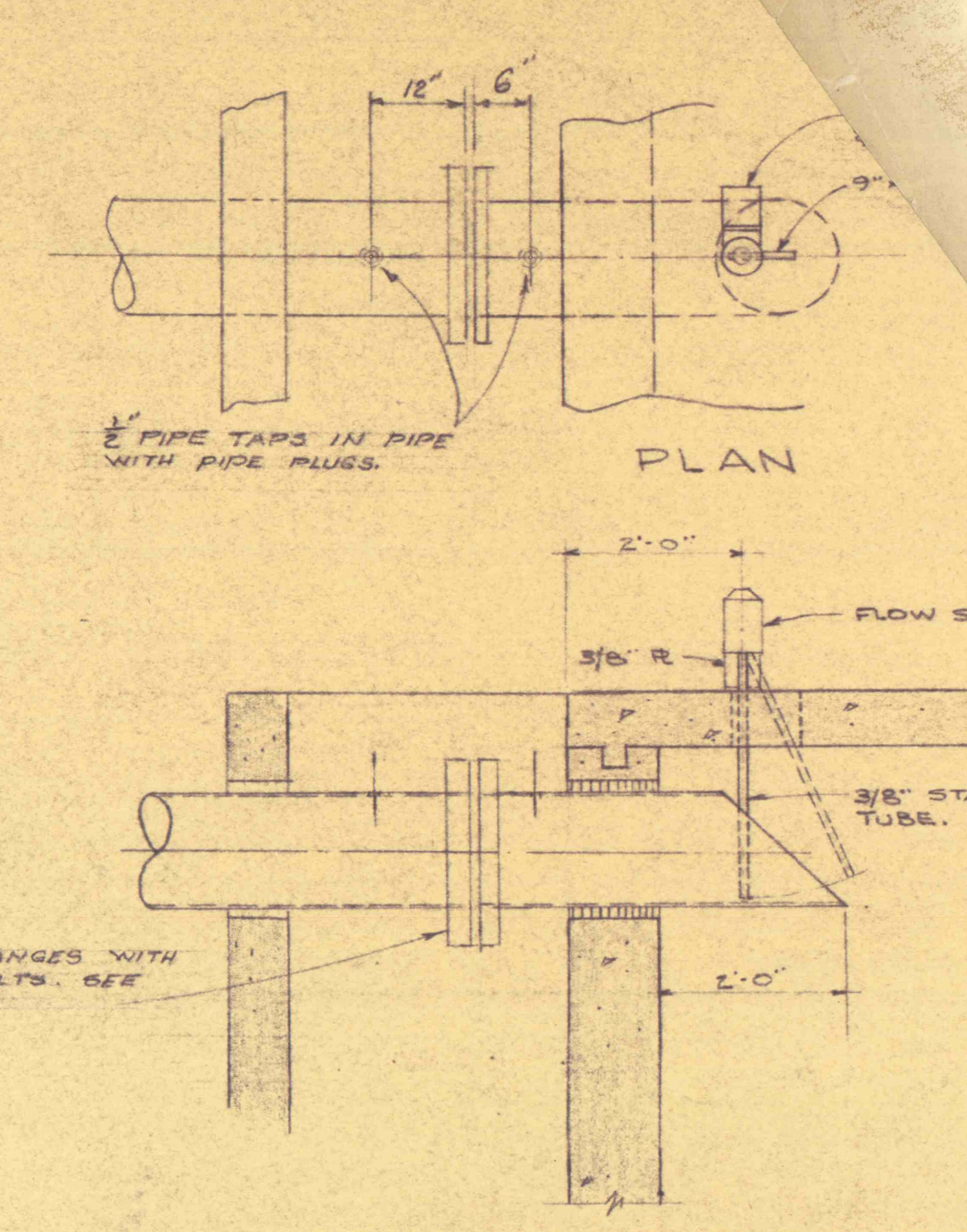
SECTION A-A
 SCALE 1/4" = 1'-0"



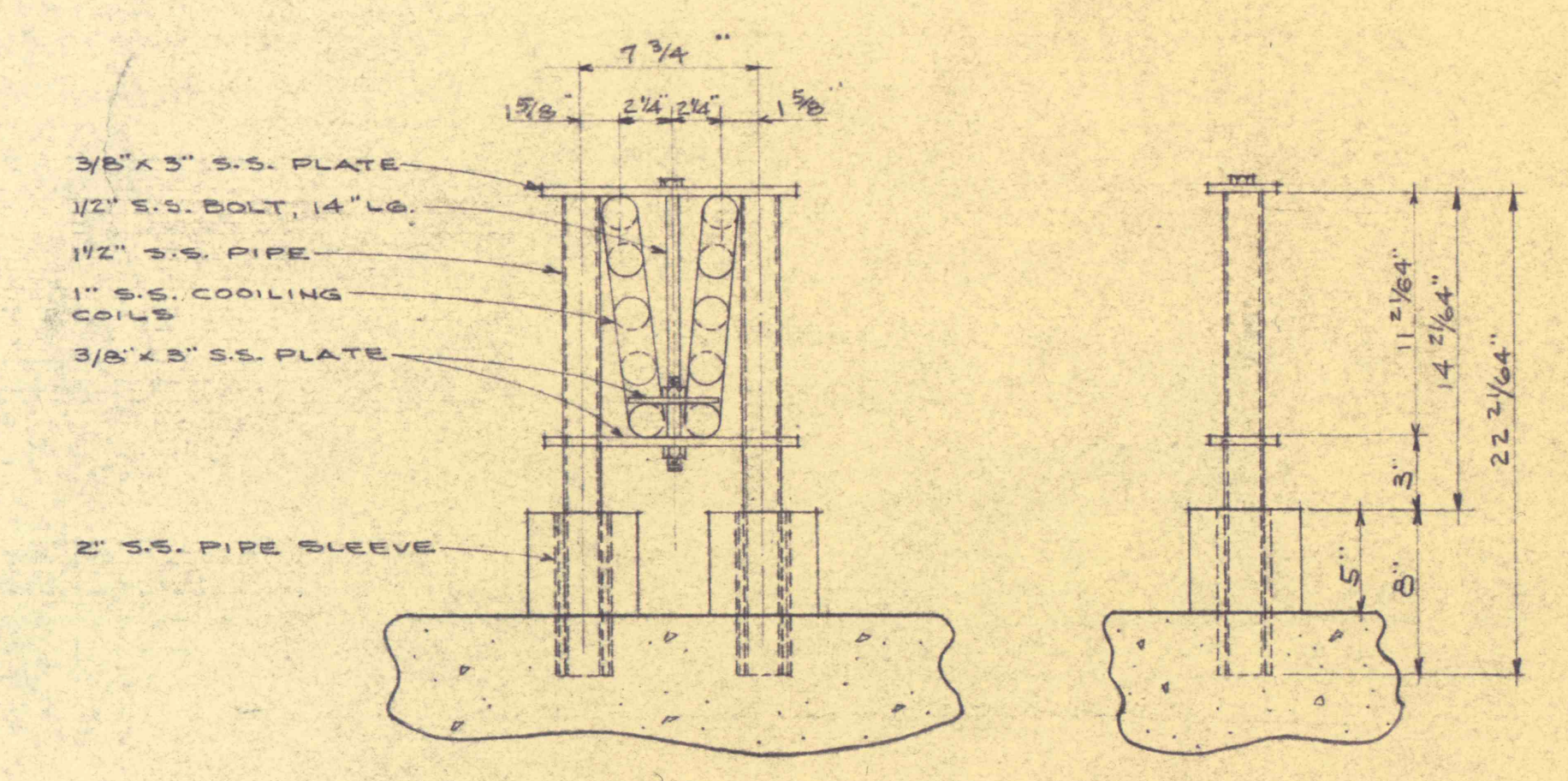
DETAIL D



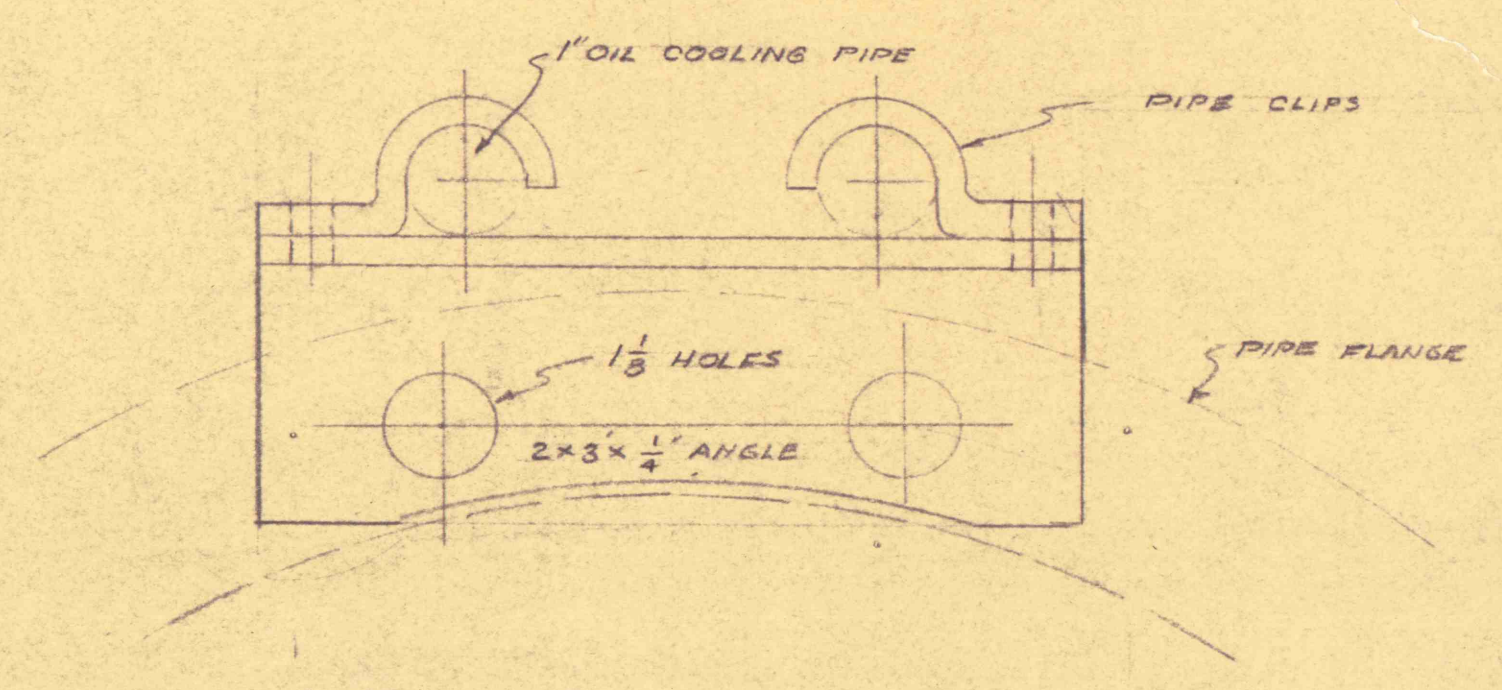
SECTION B-B
 SCALE 1/4" = 1'-0"



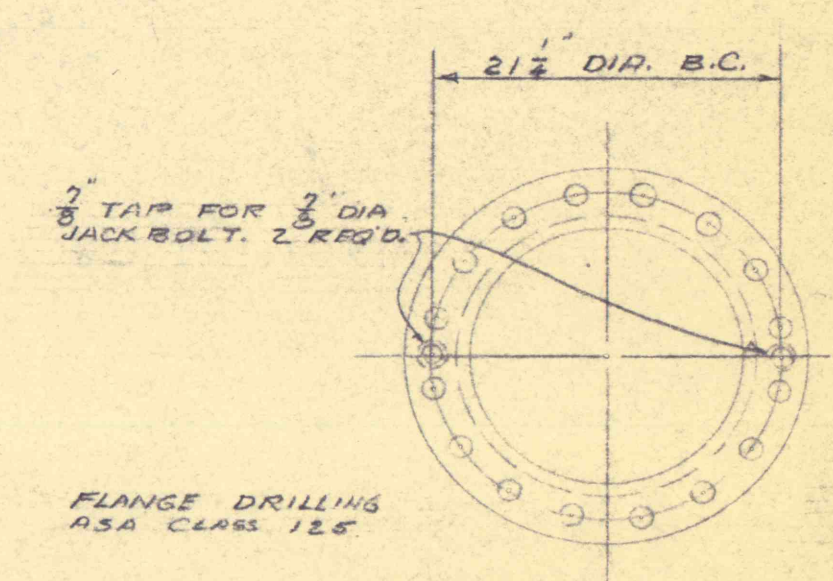
SECTION SHOWING FLOW SWITCH
 SCALE 1/2" = 1'-0"



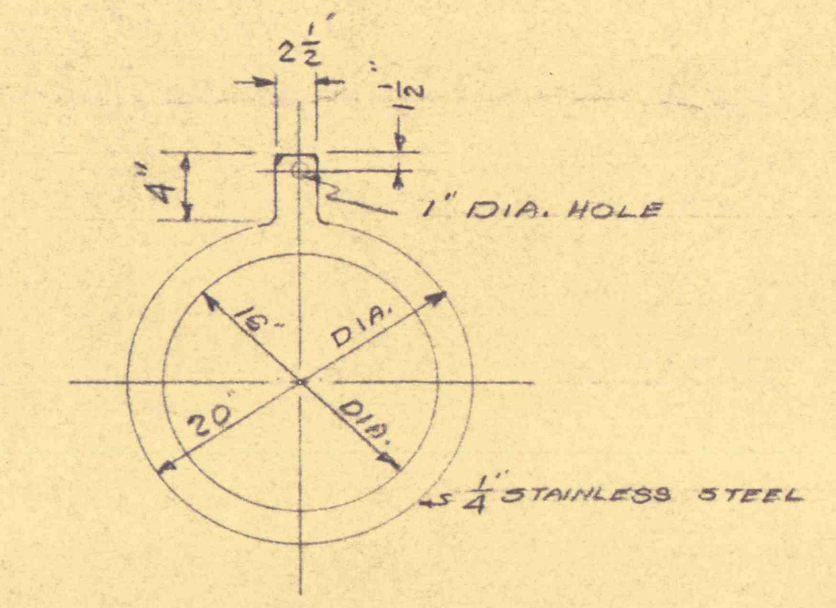
DETAIL OF SUPPORT RACK FOR COOLING COILS 12 REQ'D
 SCALE 1/2" = 1'-0"



DETAIL OF SUPPORT FOR OIL COOLING PIPES
 SCALE 1" = 1'-0"



DETAIL OF ORIFICE FLANGE



DETAIL OF SPACER PLATE

• REVISIONS • REVISED 7-18-59 REVISED 8-8-58	DISCHARGE PIPING-PLANS-ELEVATIONS-DETAILS	
	FLOOD CONTROL PROJECT NO.13 PHASE 'B'	
	PA. DEPT. OF MINES & MINERAL INDUSTRIES	
	GLEN ALDEN CORPORATION BUTTWOOD COLLIERY BUTTWOOD SHAFT	
ROUSHEY AND SMITH		
SCALE NOTED	ENGINEERS AND CONSULTANTS	JOB 628
DATE 3-8-58	185 MARKET STREET KINGSTON, PENNA.	DWG. No.
By: ETK/ES		No.

