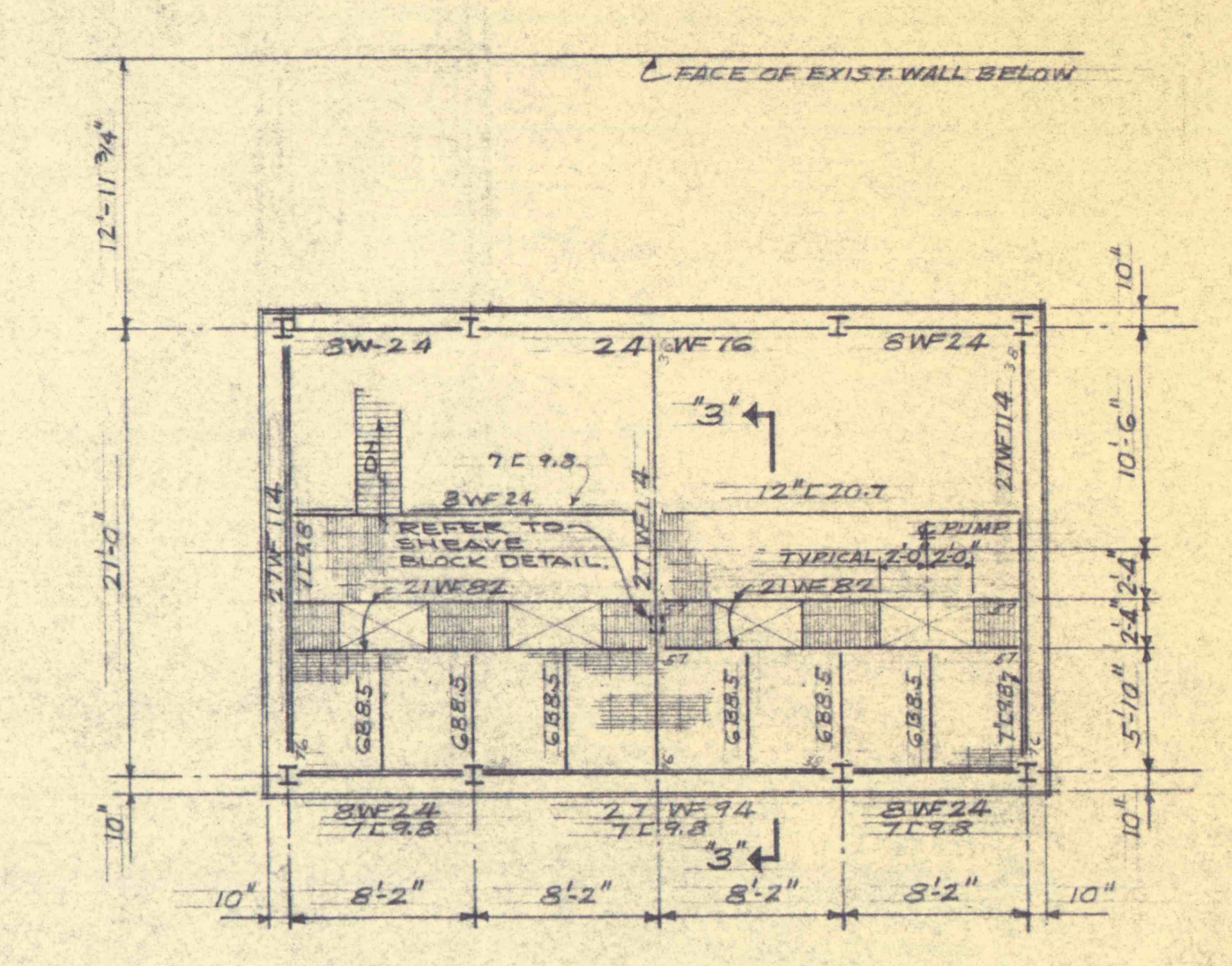
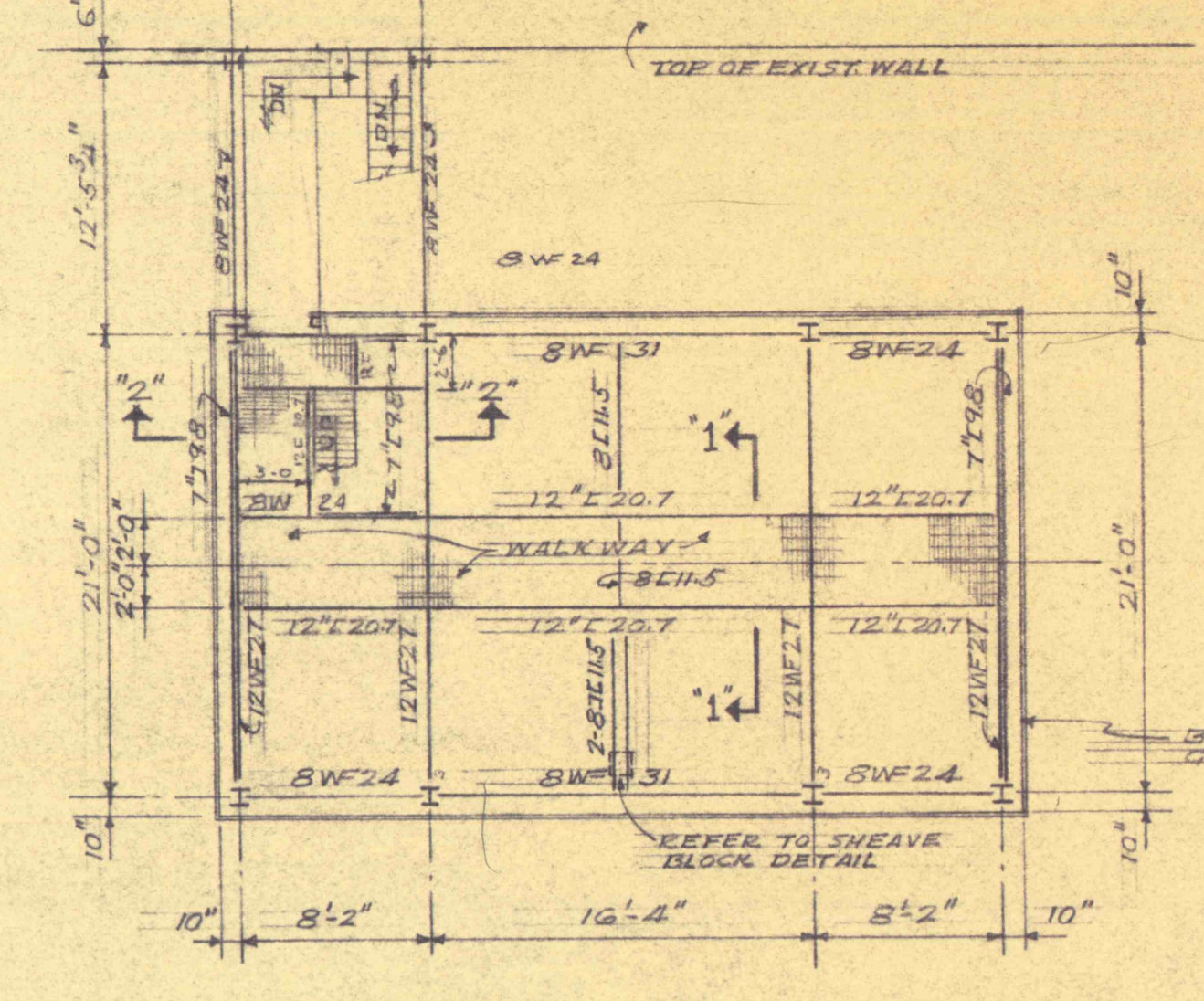


ROOF FRAMING PLAN
SCALE: 1/8"=1'-0"

FRAMING PLAN AT ELEV. +50'-0"
SCALE: 1/8"=1'-0"

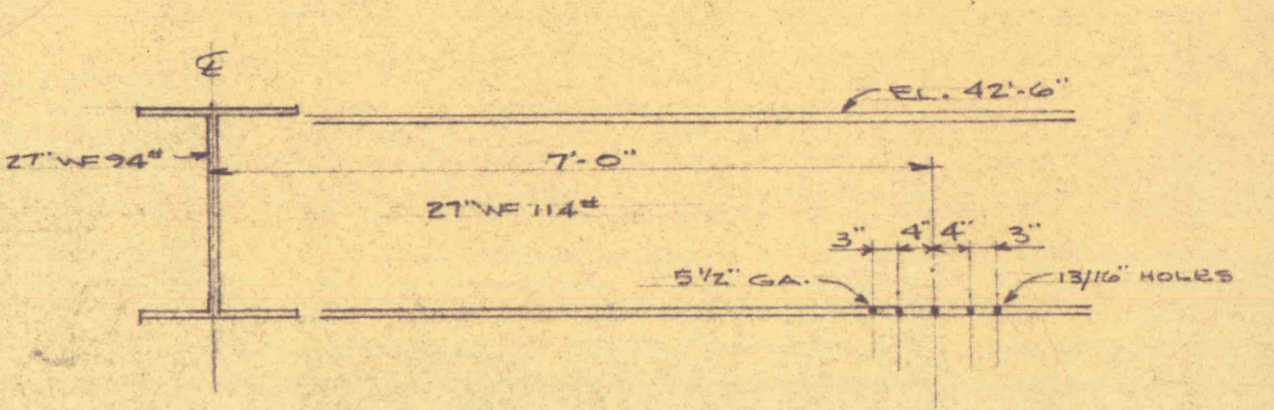


FRAMING PLAN AT ELEV. +42'-6"
SCALE: 1/8"=1'-0"
TOP OF STRINGERS AROUND WALKWAY @ EL. +43'-0"

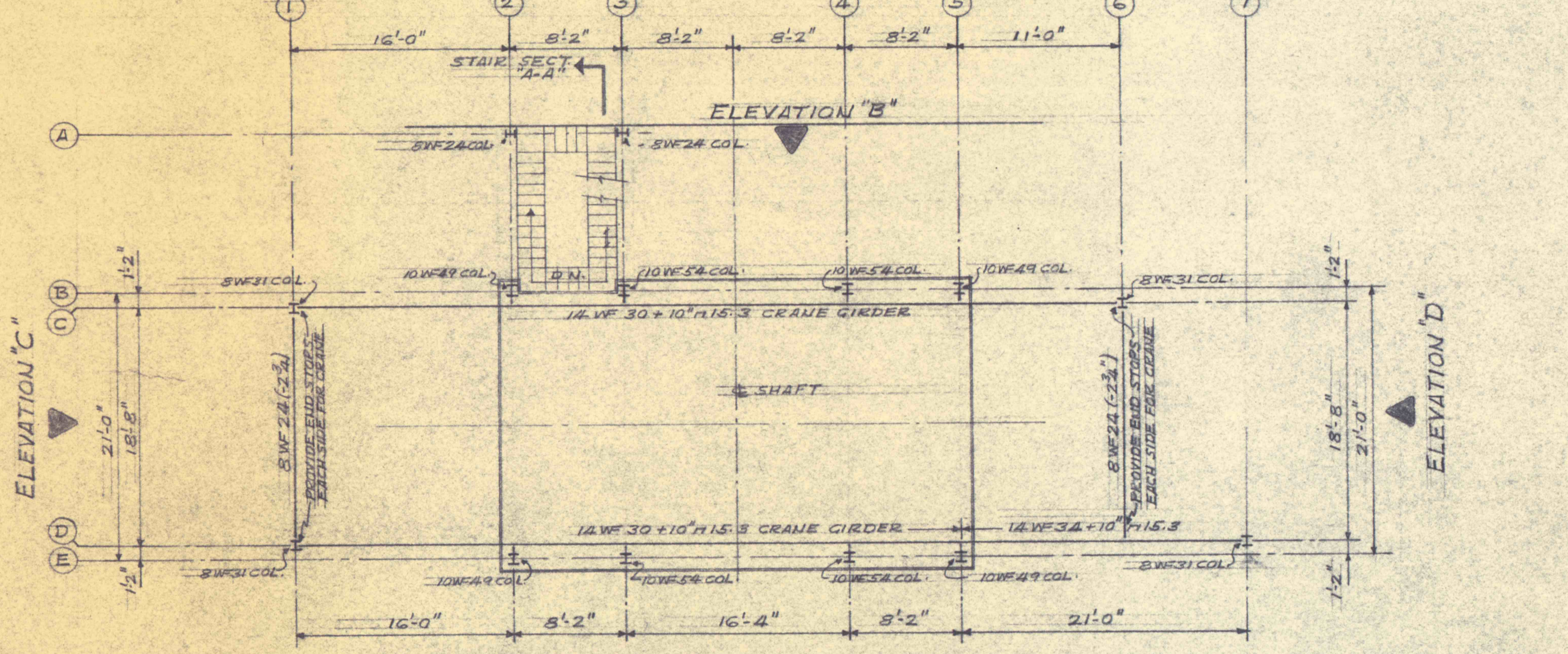


FRAMING PLAN AT ELEV. +27'-6"
SCALE: 1/8"=1'-0"
TOP OF STRINGERS AROUND WALKWAY @ EL. +28'-0"

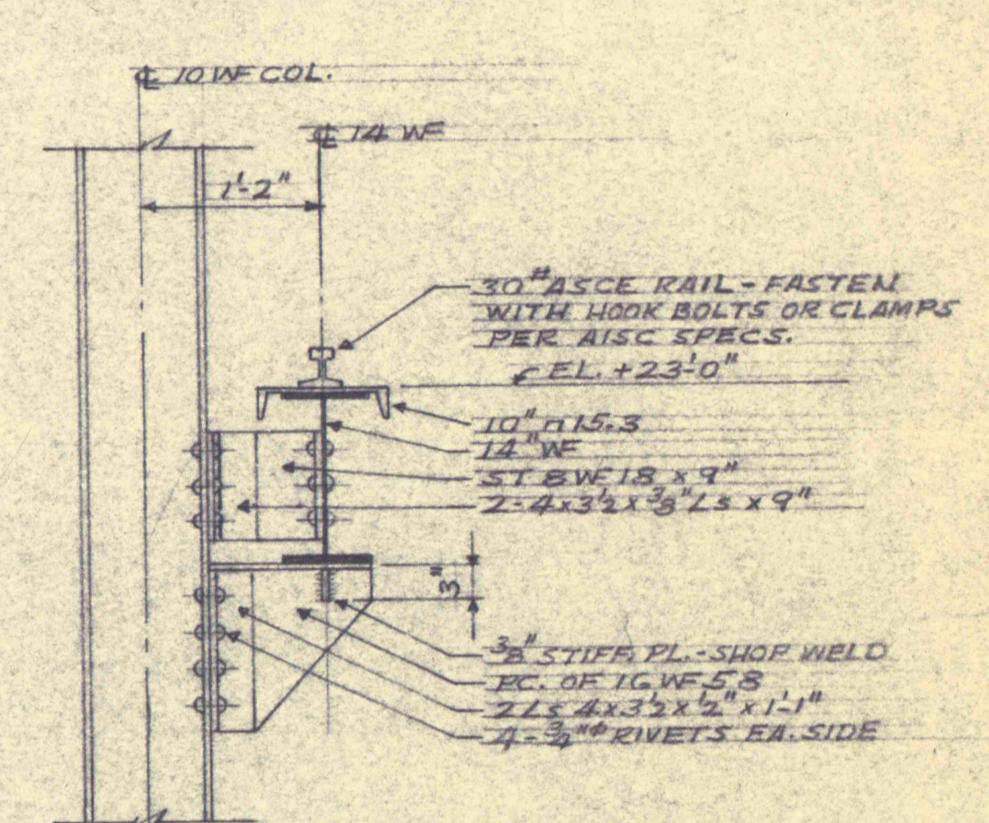
SHEAVE BLOCK DETAIL AT ELEV. 27'-6"



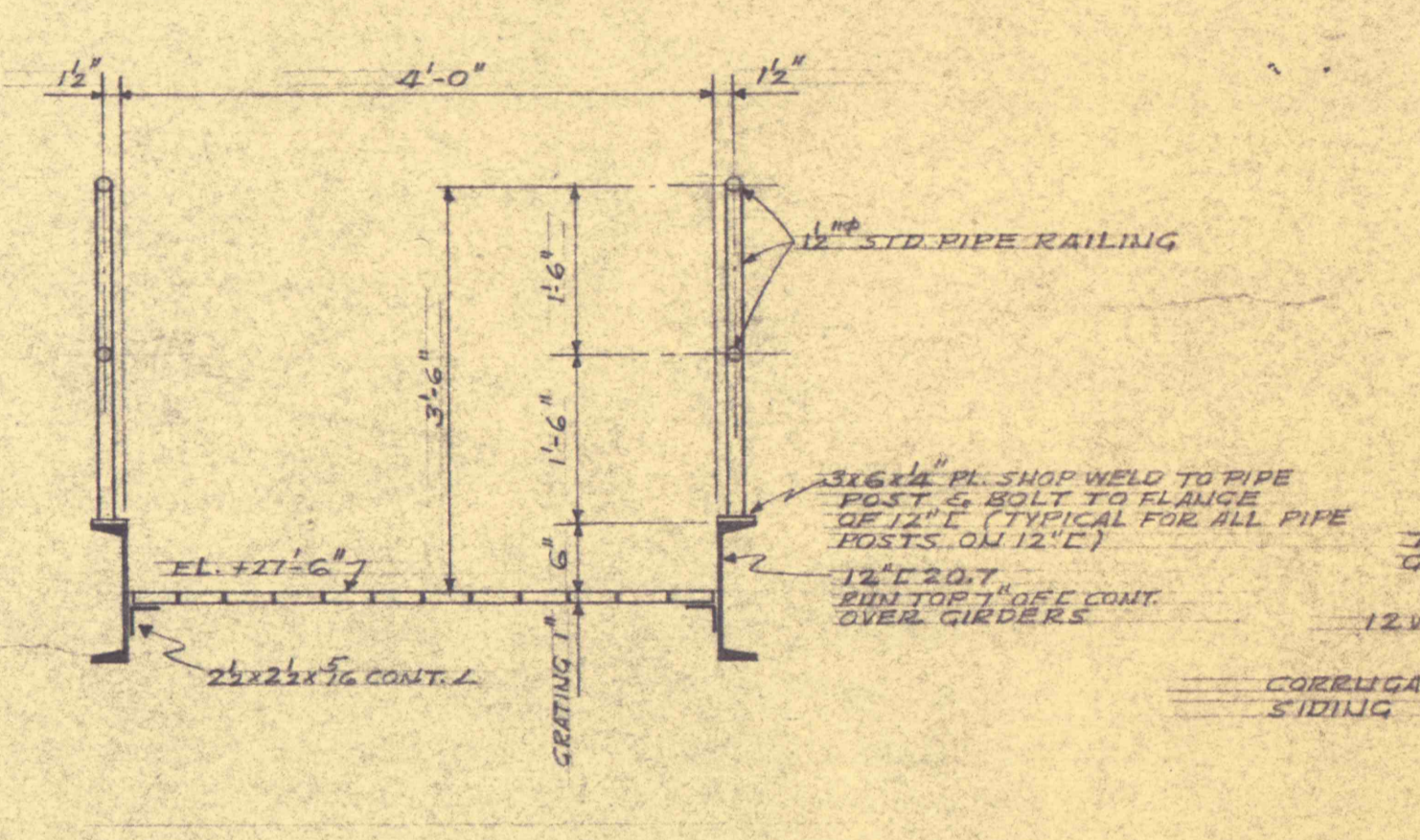
SHEAVE BLOCK DETAIL AT ELEV. 42'-6"



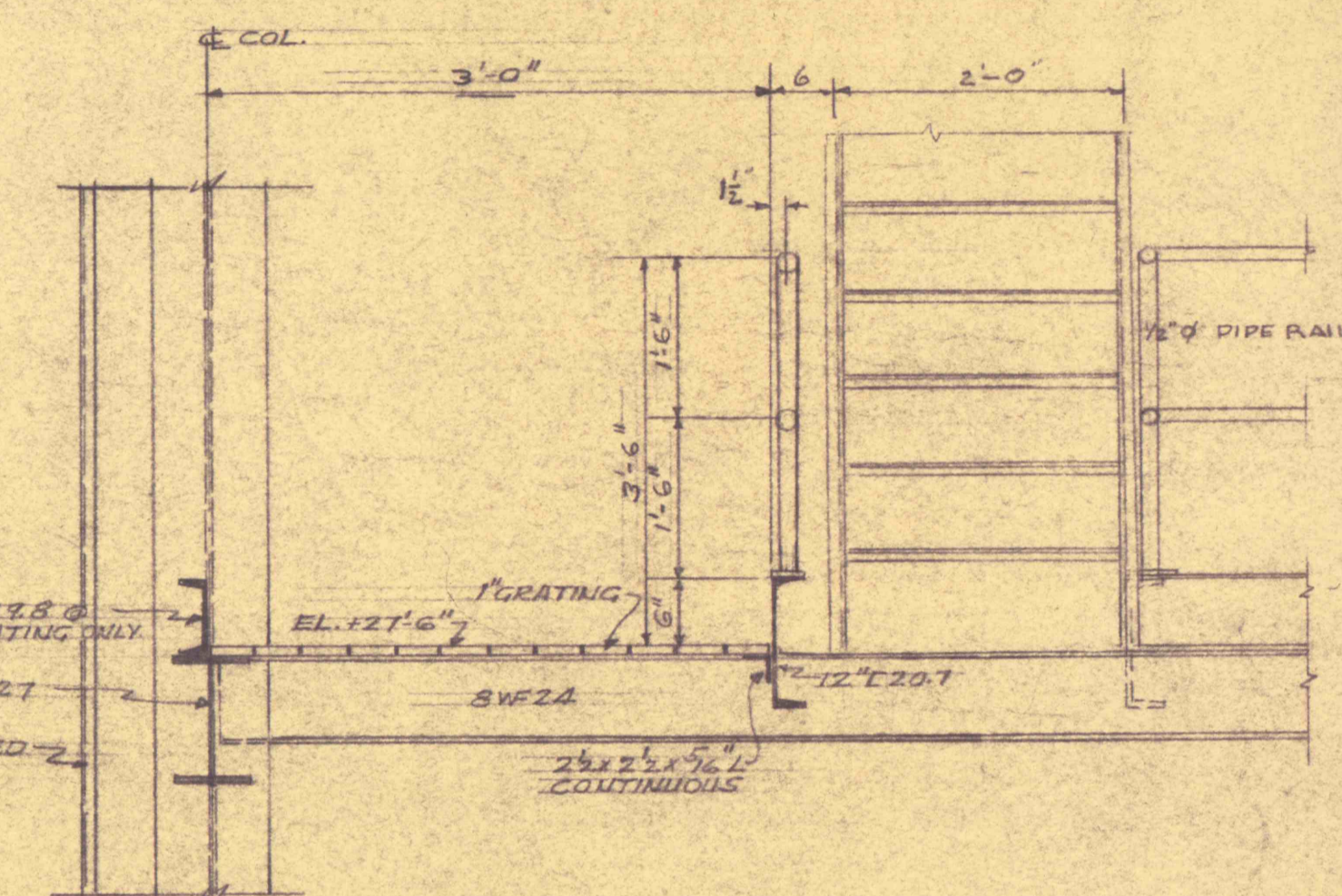
FRAMING PLAN AT ELEV. +23'-0"
SCALE: 1/8"=1'-0"



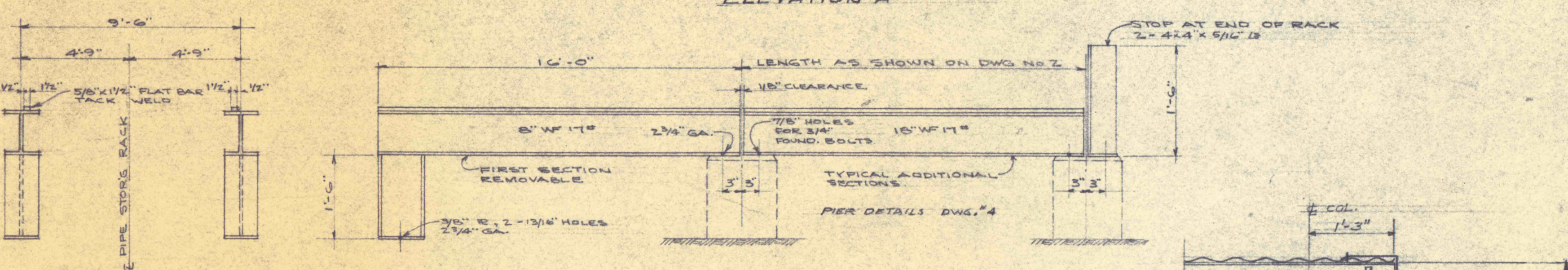
CRANE BRACKET DETAIL
SCALE: 3/8"=1'-0"



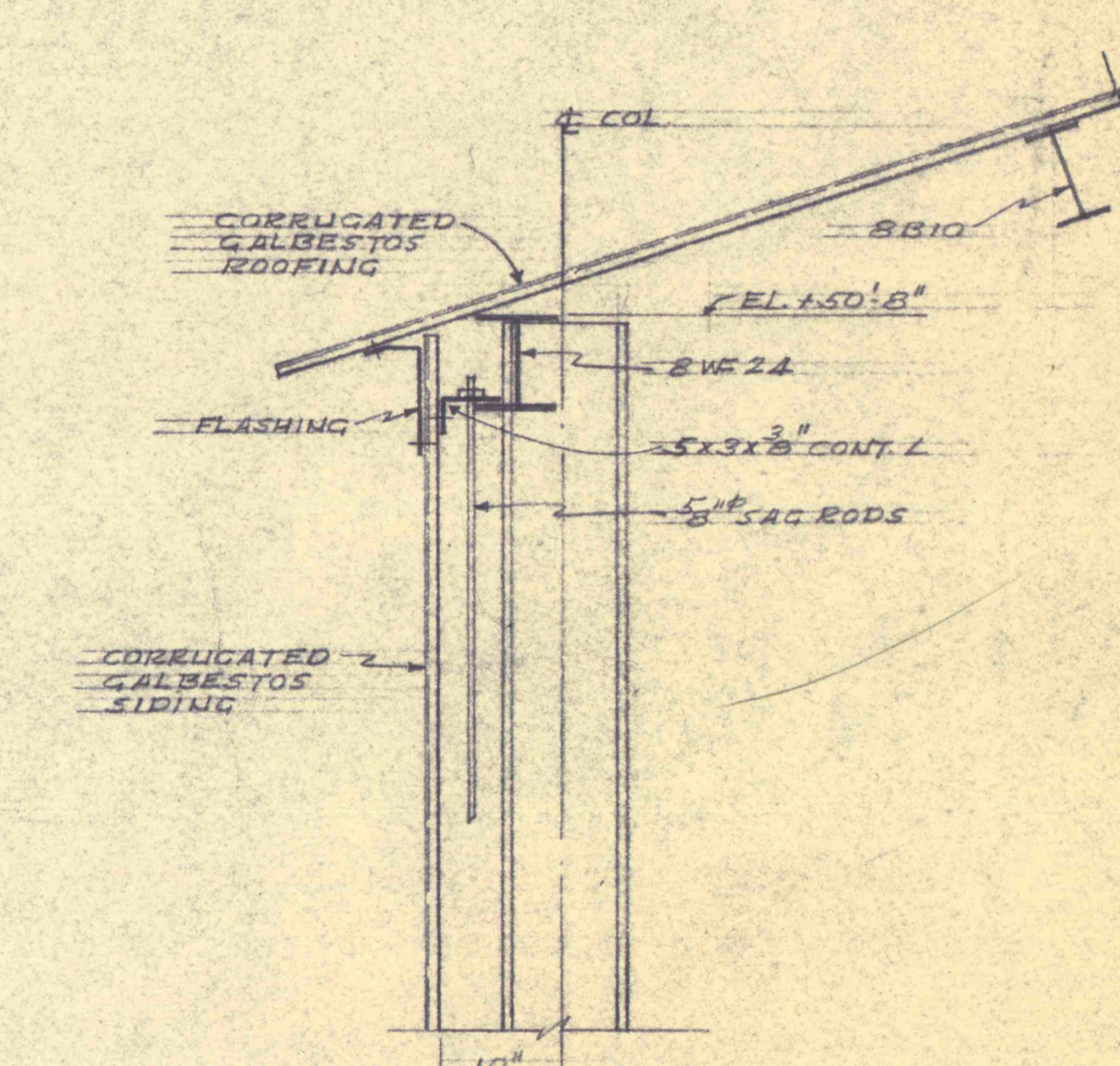
SECTION 1-1
SCALE: 3/4"=1'-0"



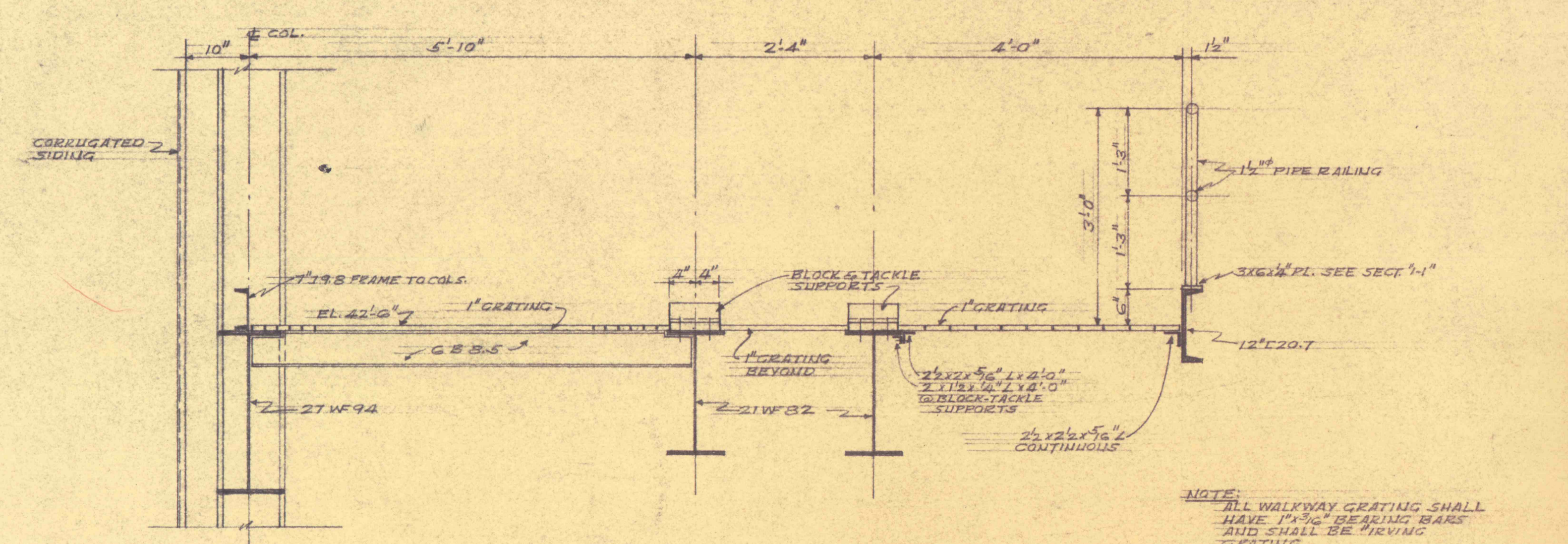
SECTION 2-2
SCALE: 3/4"=1'-0"



DETAIL OF PIPE STORAGE RACK

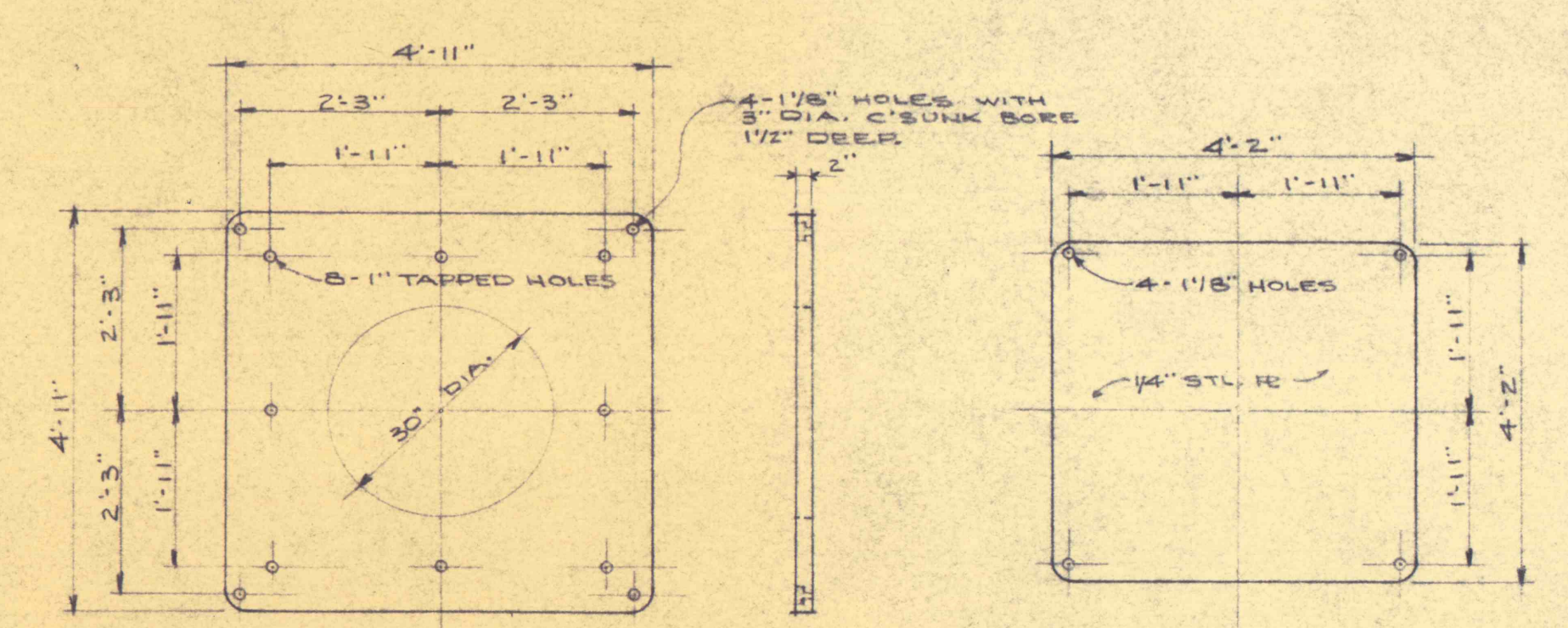


TYPICAL EAVE DETAIL
SCALE: 3/4"=1'-0"



SECTION 3-3
SCALE: 3/4"=1'-0"

NOTE: ALL WALKWAY GRATING SHALL HAVE 1\"/>



PUMP BASE PLATE
4 REQ'D

BASE PLATE COVER
1 REQ'D

LEVELING BOLT FOR BASE PLATE
16 REQ'D

STRUCTURAL STEEL FRAMING PLANS & DETAILS

REVISIONS		FLOOD CONTROL PROJECT NO. 13 PHASE 'B' PA. DEPT. OF MINES & MINERAL INDUSTRIES GLEN ALDEN CORPORATION BUTTONWOOD COLLIERY, BUTTONWOOD SHAFT
REVISION	DATE	
1	7-18-58	Roushey and Smith ENGINEERS AND CONSULTANTS 180 MARKET STREET KINGSTON, PENNA.
2	8-8-58	
DATE: 8-8-58		SCALE: NOTED
BY: W.P.		JOB: 62-5

