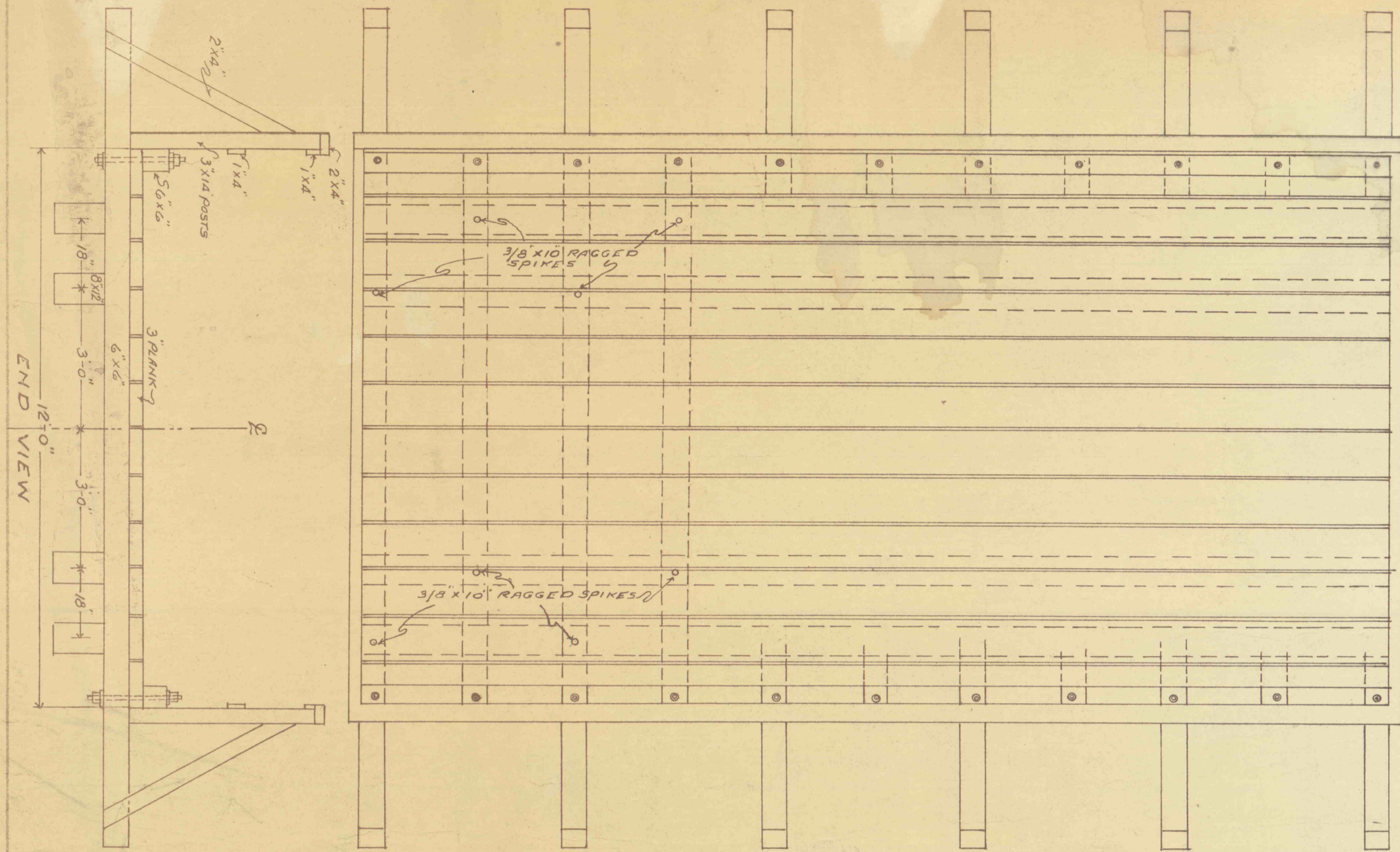
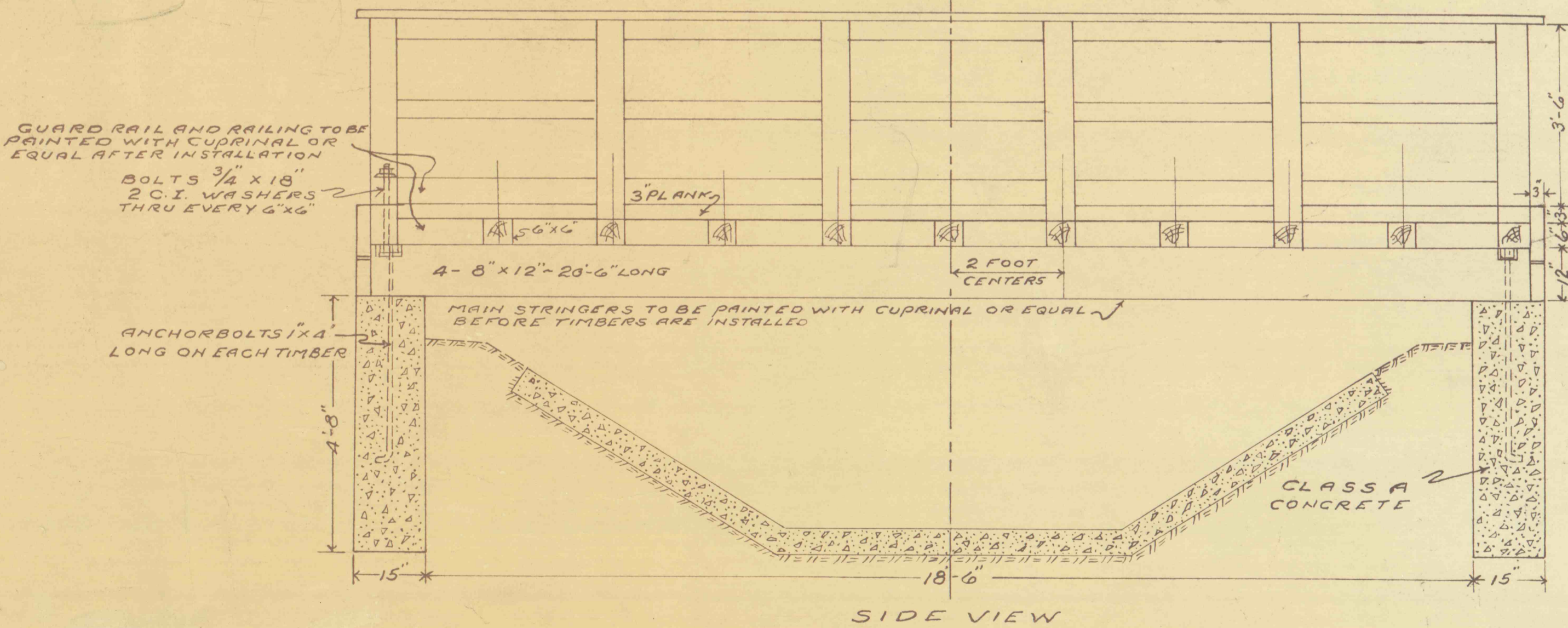


NOTE: TIE 6" X 6" FLOOR STRINGERS TO 8" X 12" MAIN STRINGERS WITH 3/8" X 10" RAGGED SPIKES, STAGGERED AS SHOWN. HOLES TO BE DRILLED THRU 6" X 6" STRINGERS BEFORE DRIVING SPIKES.



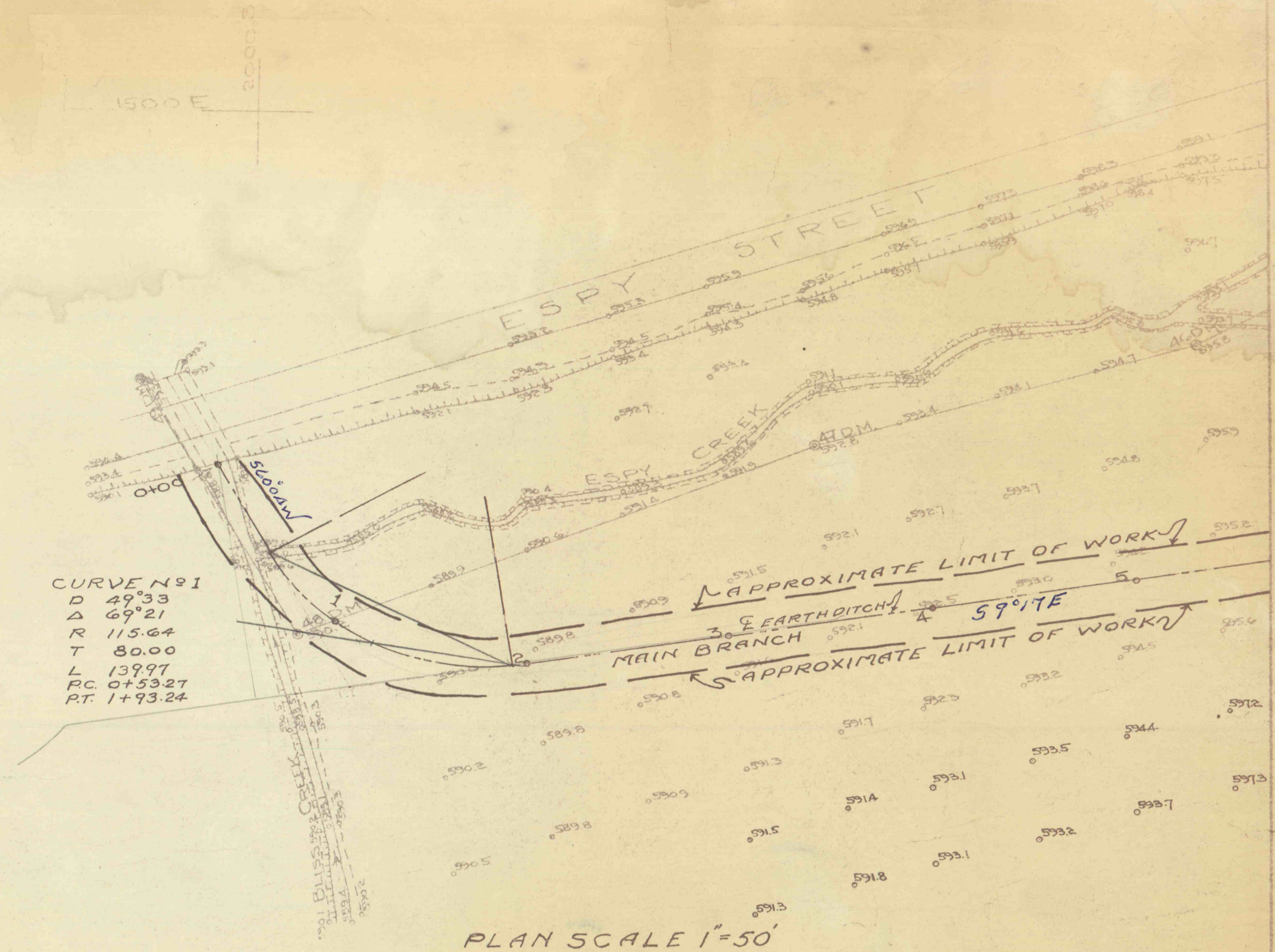
PLAN
WOOD BRIDGE FOR ACCESS
TO GLEN ALDEN CORP. LEASE NO. 2267
STATION 17+50
SCALE 1/2"=1'



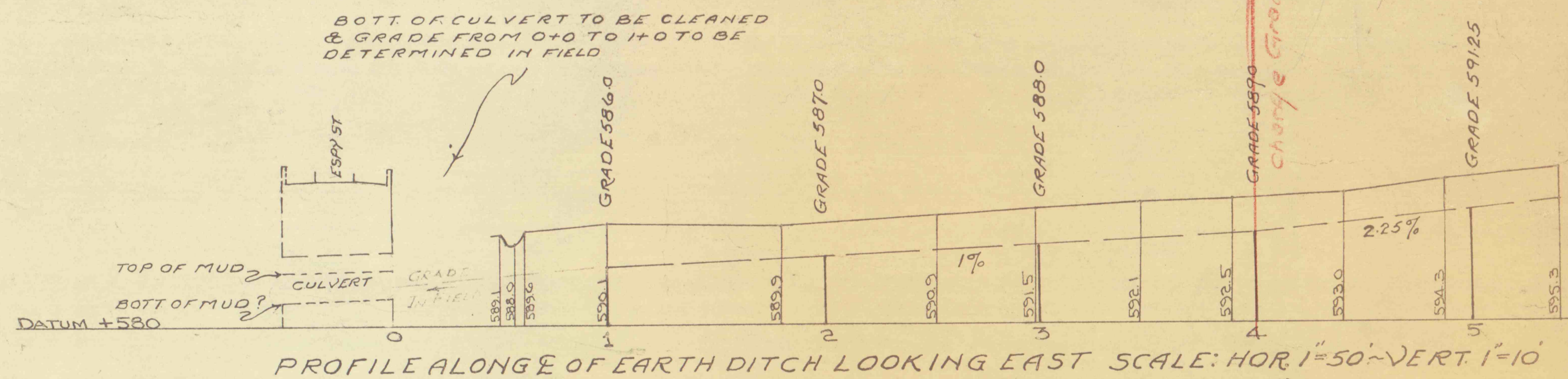
SIDE VIEW

MAIN BRANCH

CURVE NO. 1
D 49°33'
Δ 69°21'
R 115.64
T 80.00
L 139.97
PC 0+53.27
PT 1+93.24



PLAN SCALE 1"=50'



PROFILE ALONG E OF EARTH DITCH LOOKING EAST SCALE: HOR 1"=50' VERT 1"=10'

SHEET #1 OF

GLEN ALDEN CORPORATION
SURFACE DRAINAGE PROJECT NO. 30
— ESPY CREEK —
NANTICOKE CITY, HANOVER & NEWPORT
TOWNSHIPS, LUZERNE COUNTY, PENNA.
SCALES AS NOTED