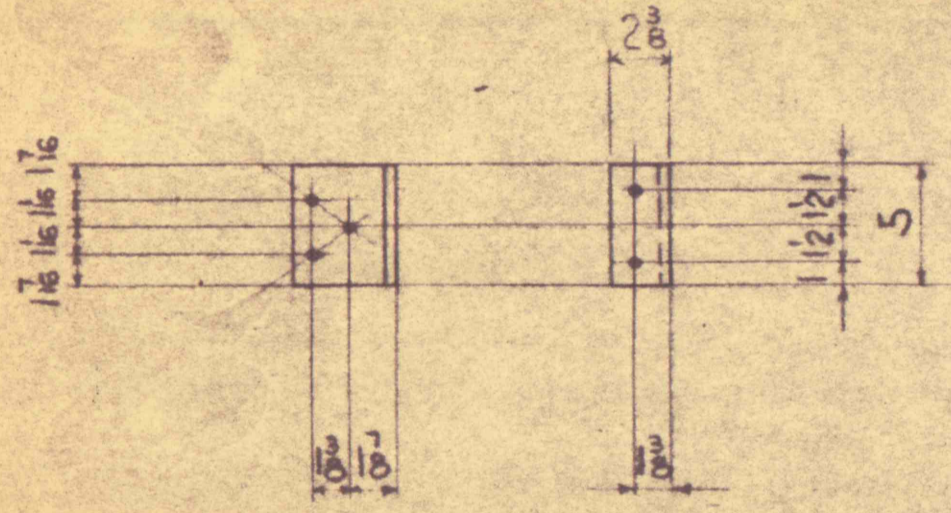
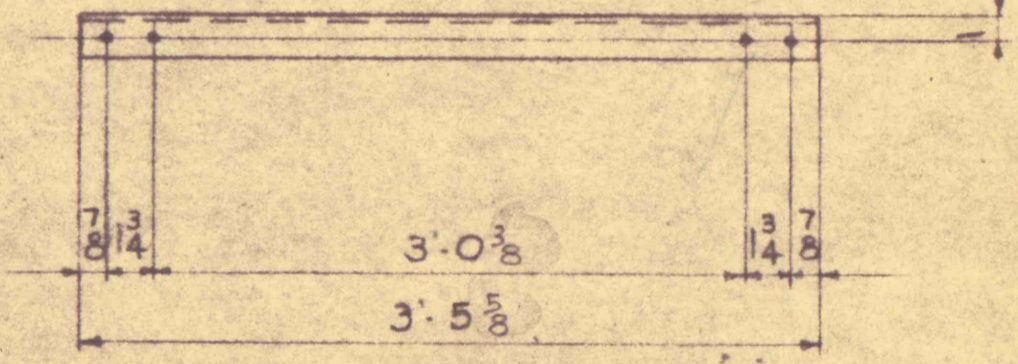


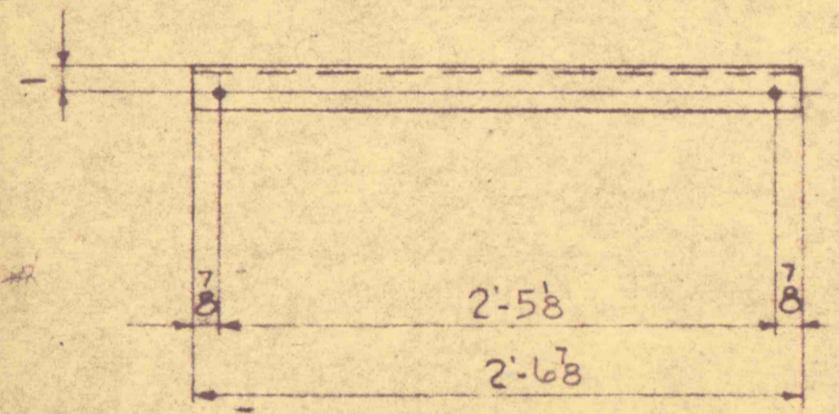
COL. 5C (SHIP ASSEMBLED)



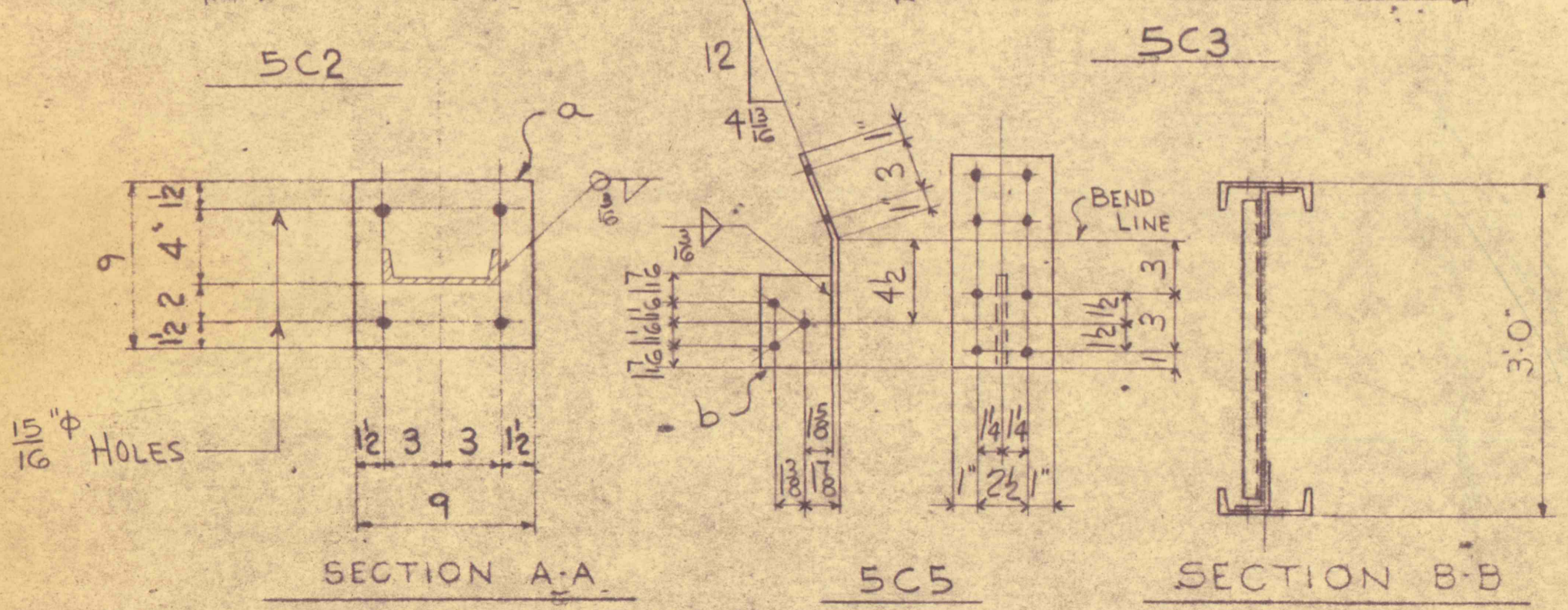
5C2



5C3



5C4



SECTION A-A

5C5

SECTION B-B

GENERAL NOTES

1. ALL STEEL TO BE H.D. GALVANIZED
2. L.C.M. ERECTION DRAWING I-500-EI
3. WESTINGHOUSE ELECTRIC DESIGN DRAWINGS 41G D434

CERTIFIED FOR CONSTRUCTION

A. C. Morgan 7/15/58

PEERLESS PUMP PON-30500
 JOB #79963 IN-11911
 BUTTWOOD SHAFT PROJECT #13

MARK	NO. PCS.	SIZE	LENGTH	TOTAL	TOTAL
			FT.	WT.	WT.
MATERIAL LISTED FOR 1 COL.					
2 REQ'D					
5C	CHANNEL COL.				
5C1	2	6E82	20	7	
a	2	PL 9x2	0	9	
5C2	10	L4x2 3/8x4	0	5	CUT 4x3L
5C3	10	L1 1/2x1 1/4x3/8	3	5 3/8	
5C4	1	L1 1/2x1 1/4x4	2	6 3/8	
5C5	2	PL 4 1/2x4	1	0	BENT
b	2	PL 3 3/4x4	0	5	
	52	5/8" GMB	0	12	SP. HP. HEX NUT 12 REG
	9	5/8" GMB	0	17	SP. HP. HEX NUT 12 REG

1/16" HOLES - UNLESS NOTED

LEE C. MOORE CORPORATION
 PITTSBURGH, PA. • TULSA, OKLA. • DALLAS, TEXAS • WICHITA, KANSAS

3'-0" x 20'-7" CHANNEL COLUMN (6E82)
 WESTINGHOUSE ELECTRIC CORP.

COORD.	ENGR.	REV.

I-500-5C
 DRWN. J.S. 6-27-58
 CHKD. HEM 7-14-58
 APPD.