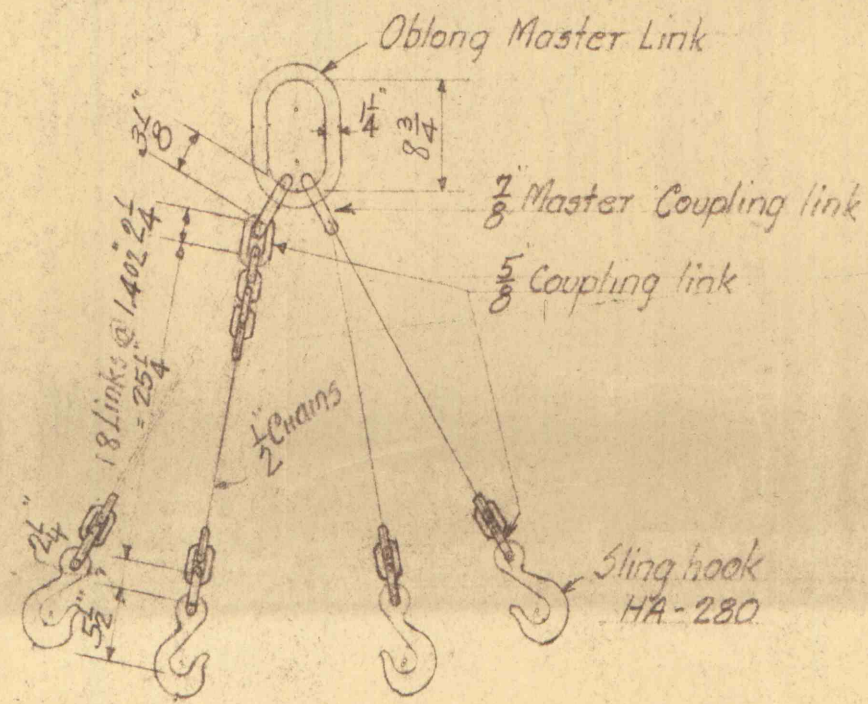
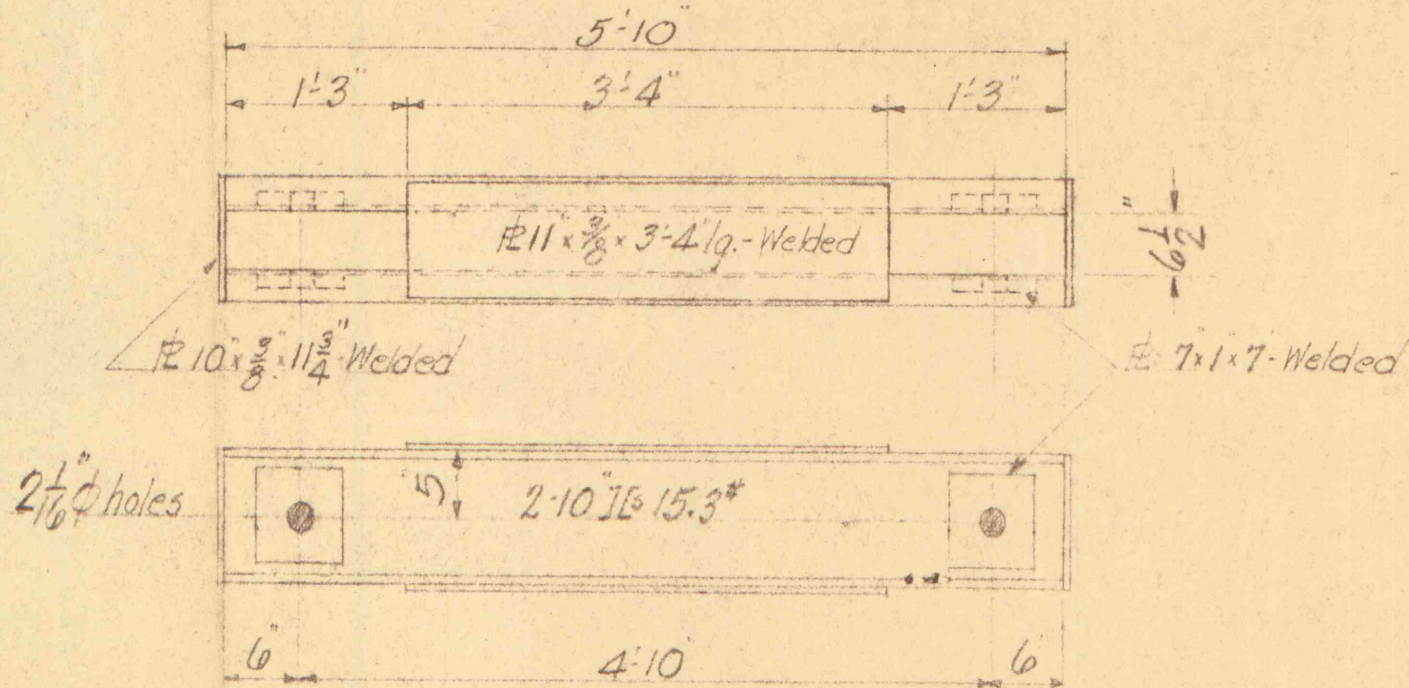


TWO - DOUBLE SLING CHAINS MK-1 - FOR GREENWOOD #10 MINE ONLY
 TWO - DOUBLE SLING CHAINS MK-2 - FOR TAMAQUA #14 MINE ONLY
 LOAD 75000 #

Scale $\frac{3}{4}$ " = 1'-0"



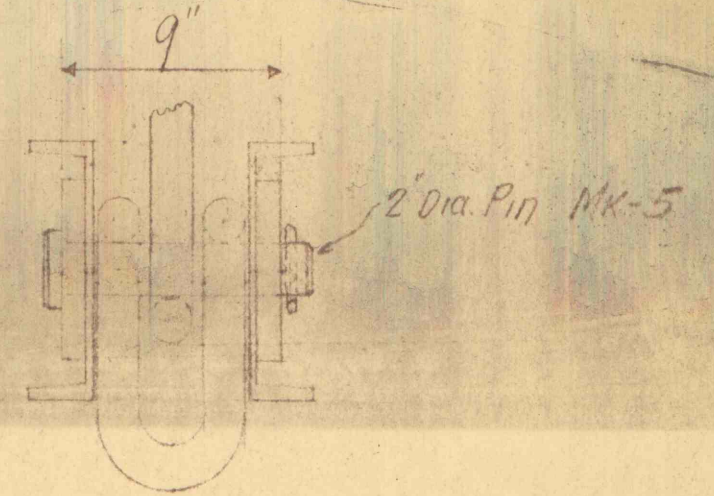
ONE - QUAD SLING CHAIN MK-3



SPREADER BEAM MK-4

NOTE: All chains to be matched for reach

Note: Chain, links, hooks etc. from Data book No. 100
 Columbus McKinnon Chain Corp. - Herc-Alloy steel
 Or Equal



LEHIGH COAL & NAVIGATION CO
 TAMAQUA #14 & GREENWOOD #10 SHAFTS

DOUBLE SLING CHAINS

DATE - MAR 28, 1958 DRAWING BY H.W.D.

5-3139