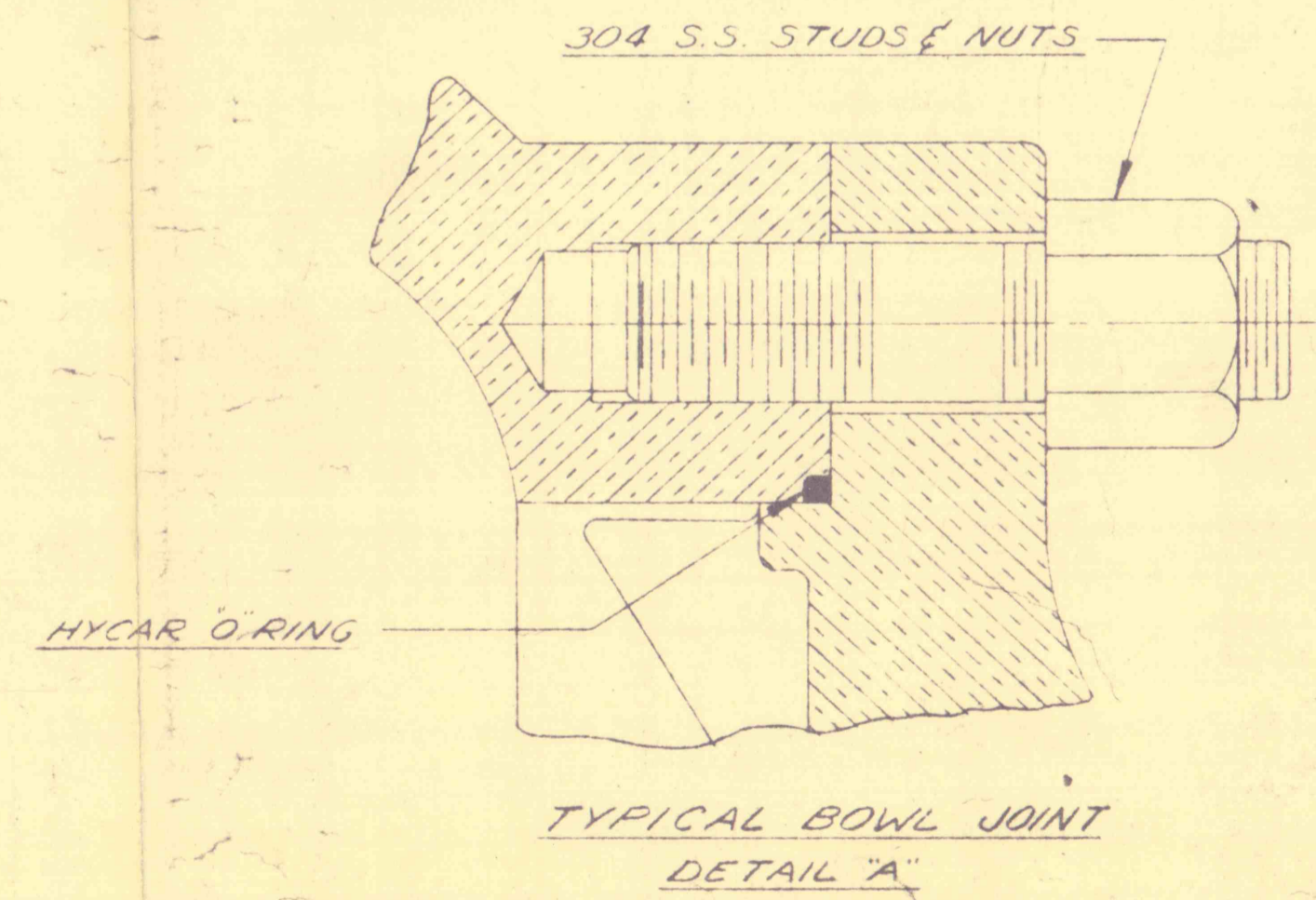
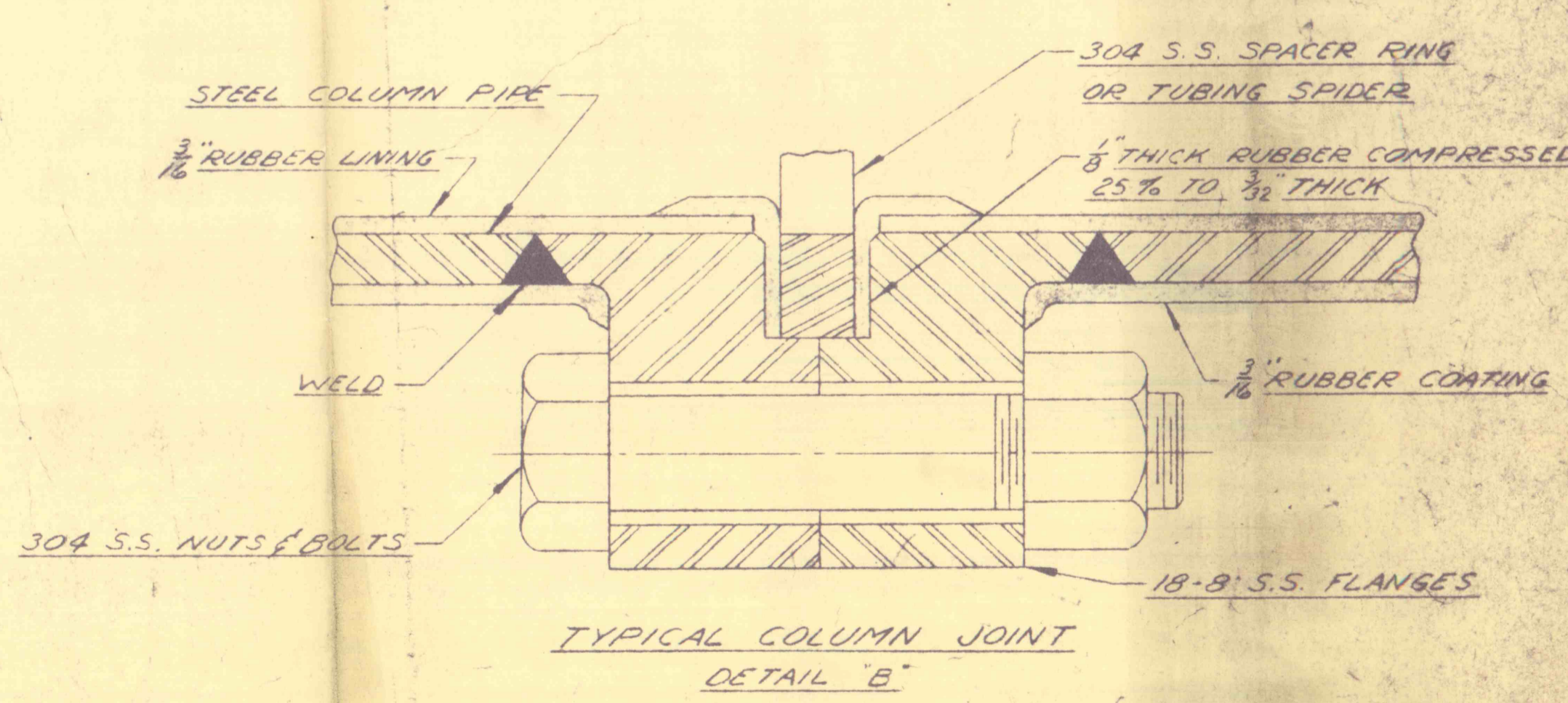


ITEM NO.	QTY	PART NO.	DESCRIPTION	MATERIAL
1	1	G18 AEV	GIB KEY	C.R.S.
2	1	T84511	TOP SHAFT 3 1/8\" DIA	C1045 S2
3	1	T84511	TOP SHAFT NUT	SAE A40 BRZ
4	1	1000 HP ISCKLE, 3PH, 1500 RPM, VHS. MOTOR	DISCHARGE HEAD ASSEMBLY	STEEL
5	1	280869-1	LUBRICATOR ASSEMBLY	STEEL
6	1	V1021-A	GLAND PACKING SHAFT	SAE 63 BRZ
7	1		RING THROUST	302 S.S.
8	1		PLATE PRESSURE	303 S.S.
9	1		PACKING 3/8\" DIA x 3 1/4\" ID. RING	#710 GARL
10	4		BUSHING	SAE 63 BRZ
11	1	276810A	PIN STOP	303 S.S.
12	1		GLAND PACKING BODY	SAE 63 BRZ
13	1		PACKING 3/8\" DIA x 6\" ID. RING	#710 GARL
14	3		BUSHING	SAE 63 BRZ
15	1		BODY TUBE NUT	302 S.S.
16	1		BUSHING	SAE 63 BRZ
17	1	2768102	PN. SPRING GUIDE	303 S.S.
18	16		SPRING 1/8\" DIA x 3 1/4\" OD x 6 1/2\" LG.	SPRING
19	16		CLAMP LOCK	302 S.S.
20	1		COLUMN 1/4\" DIA x 5'10\" LG.	304 S.S.
21	2		HEAD SHAFT 3 1/8\" DIA	C1045 S2
22	1		SHAFT 3 1/8\" DIA x 5'0\" LG.	304 S.S.
23	1		TUBE SPIDER	304 S.S.
24	23		SPACER RING	304 S.S.
25	88		TOP TUBE	304 S.S.
26	1	T100843	SHAFT COUPLING	303 S.S.
27	101	T100879	TUBE 3/8\" DIA x 5'10\" LG	304 S.S.
28	198		TUBE BEARING	SAE 63 BRZ
29	200		COLUMN 1/4\" DIA x 5'0\" LG.	304 S.S.
30	1		COLUMN 1/4\" DIA x 10'0\" LG.	304 S.S.
31	58		TOP BEARING ADAPTER	304 S.S.
32	1		SHAFT 3 1/8\" DIA x 10'0\" LG.	C1045 S2
33	98	T100257	IMPELLER SHAFT 2 1/8\" DIA	303 S.S.
34	1		BUSHING	SAE 63 BRZ
35	1		DISCHARGE MANIFOLD - 18\" MA	SAE 63 BRZ
36	1		BUSHING	SAE 63 BRZ
37	1	V8684	TOP STD. BOWL - 18\" MA	303 S.S.
38	1	V8684	SPLIT RING - LOWER	28-9 S.S.
39	1		IMPELLER	SAE 63 BRZ
40	12		STD. BOWL - 18\" MA	303 S.S.
41	22		SUCTION MANIFOLD - 18\" MA	SAE 63 BRZ
42	11		BUSHING	SAE 63 BRZ
43	1	V8684	KEY IMPELLER	303 S.S.
44	1		BUSHING	SAE 63 BRZ
45	12		SAND COLLAR	NEOP
46	11		STEAMER	SAE 63 BRZ
47	1	V8684	BUSHING	SAE 63 BRZ
48	1		RETAINER UPPER SPLIT RING	SAE 63 BRZ
49	1		SPLIT RING - UPPER	303 S.S.
50	12		SHAFT 3 1/8\" DIA x 5'0\" LG	C1045 S2

* BEARINGS TO BE SINTERED METAL BUSHED.
 * BOTTOM 80 FT. OF SHAFT TO BE 303 S.S.



WEIGHT OF HEAVIEST PART	- 15,000"
TOTAL WEIGHT	- 164,700"
MAX. LOAD ON THRUST BEARINGS	- 55,640"
LATERAL IN BOWLS	- 1"
WEIGHT OF LEFT COLUMN SECTION	- 1,390"
WEIGHT OF BOWL ASSEMBLY	- 5,900"



PEERLESS PUMP DIVISION
 FOOD MACHINERY AND CHEMICAL CORPORATION
 LOS ANGELES, CALIFORNIA INDIANAPOLIS, INDIANA

DRAWN: [Signature]	LEHIGH COAL & NAVIGATION COMPANY	PART & PART-DWG. NO.
TRACED	COMMONWEALTH OF PENNSYLVANIA	TYPE DRAWING
CHECKED	GREENWOOD #10 MINE	ASSEMBLY
APPROVED	PROJECT #5	P.O. 95820
DATE 5-9-57	MATERIAL	PART & ORG. NO.
SCALE 1/4"		2868151

GENERAL REVISIONS 1-10-58 GENERAL REVISIONS 12-23-57 GENERAL REVISIONS 8-27-57