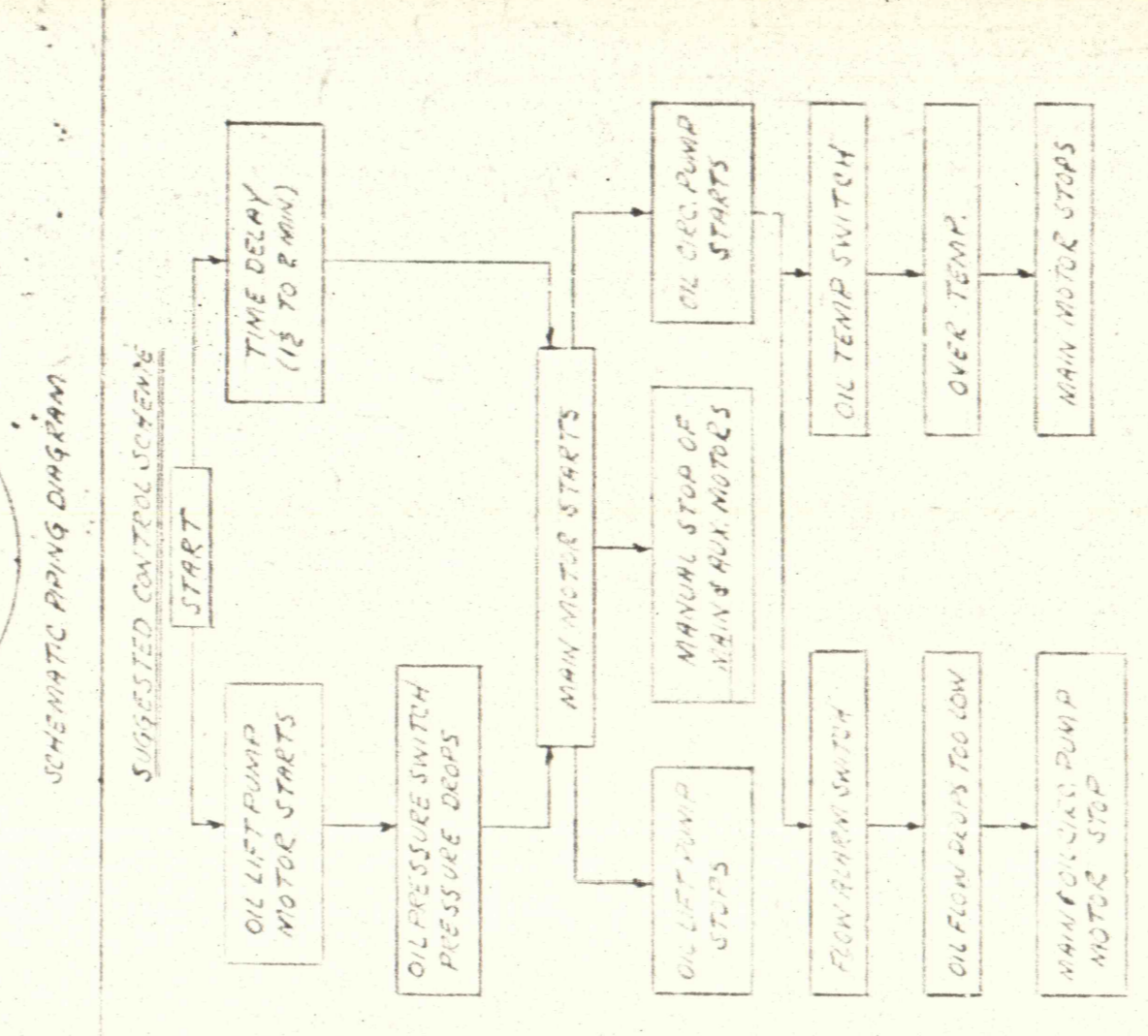
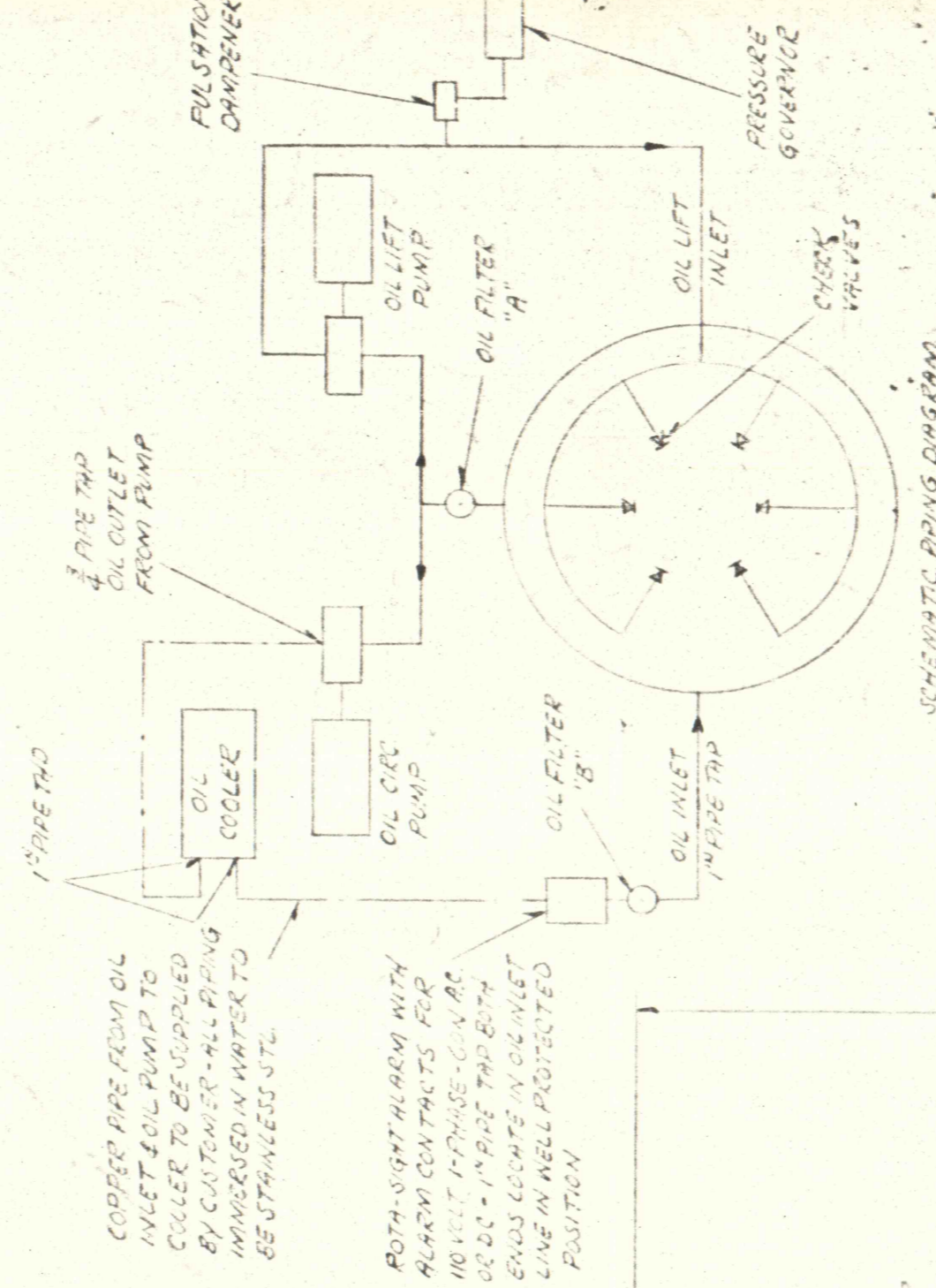
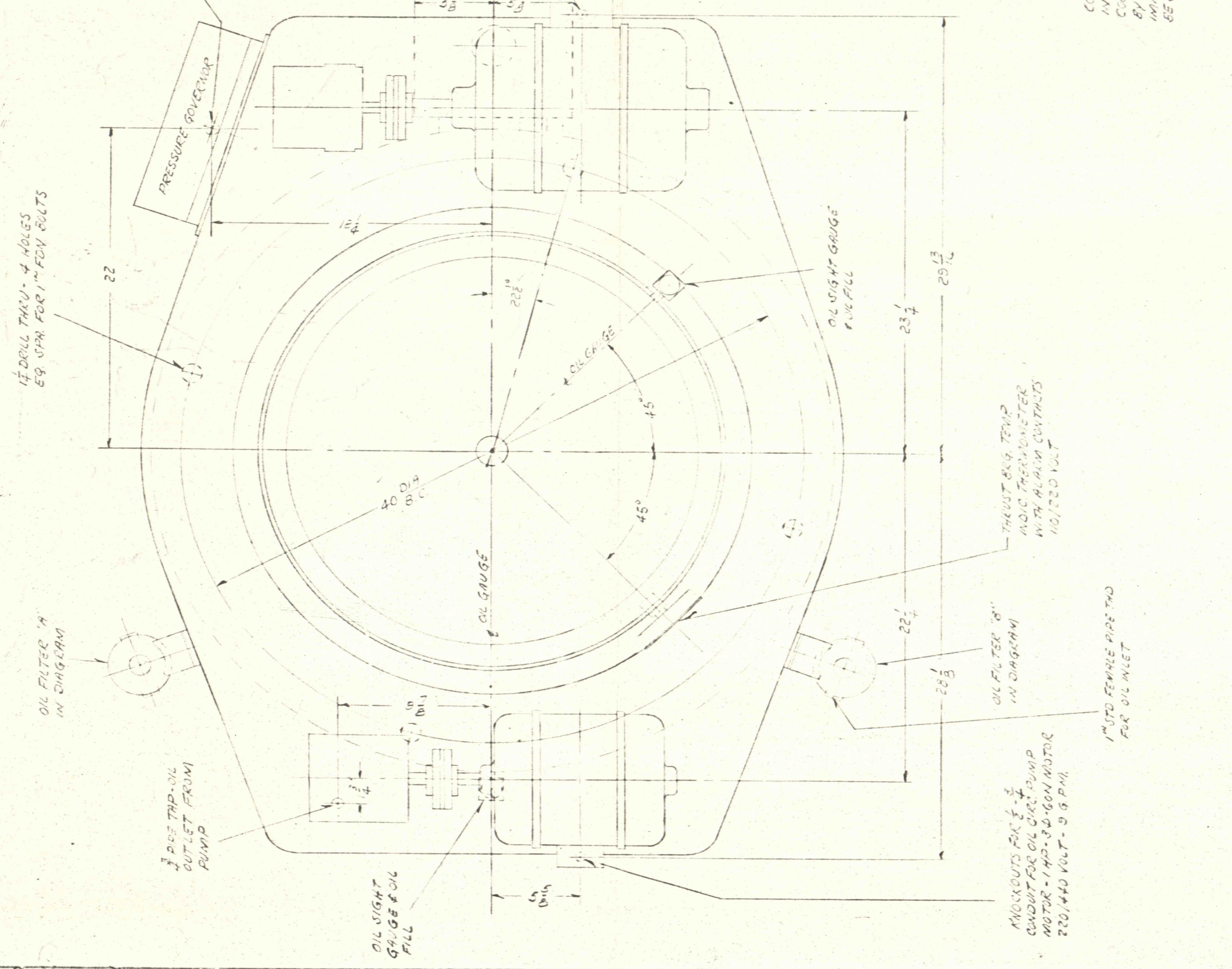
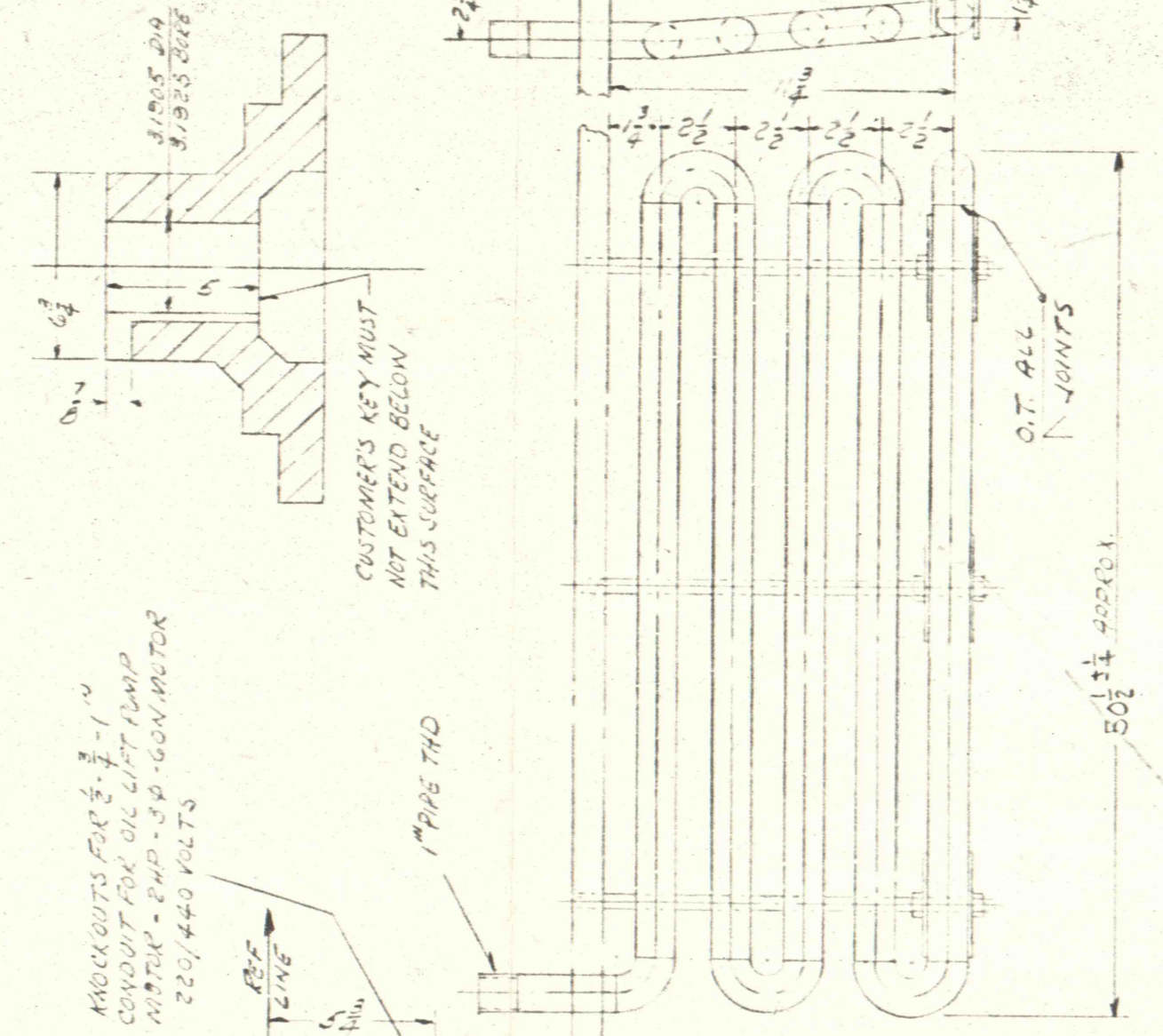
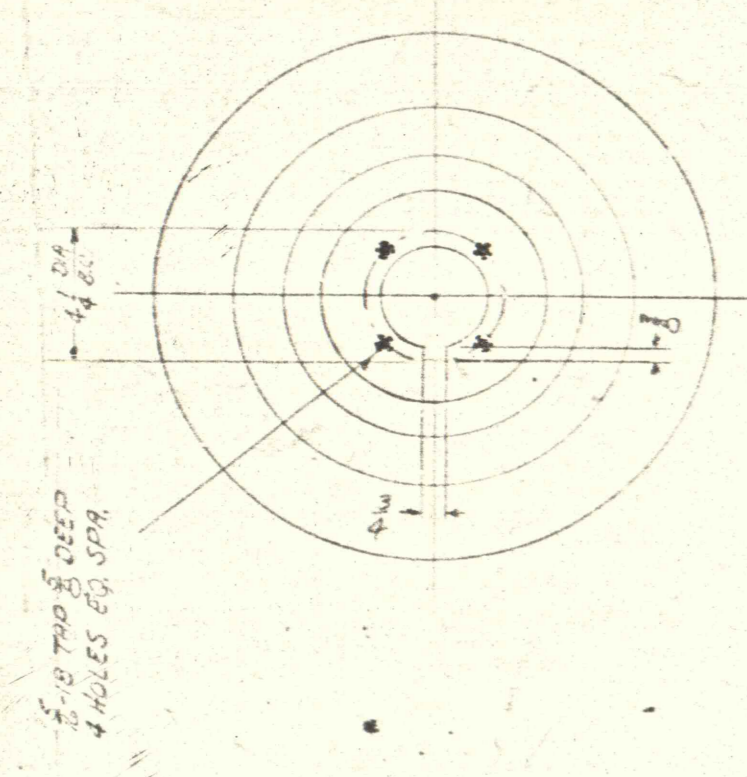


REV	DATE	DESCRIPTION
1	5/11/34	ASSEMBLY DRAWING
2	5/11/34	REVISIONS
3	5/11/34	REVISIONS

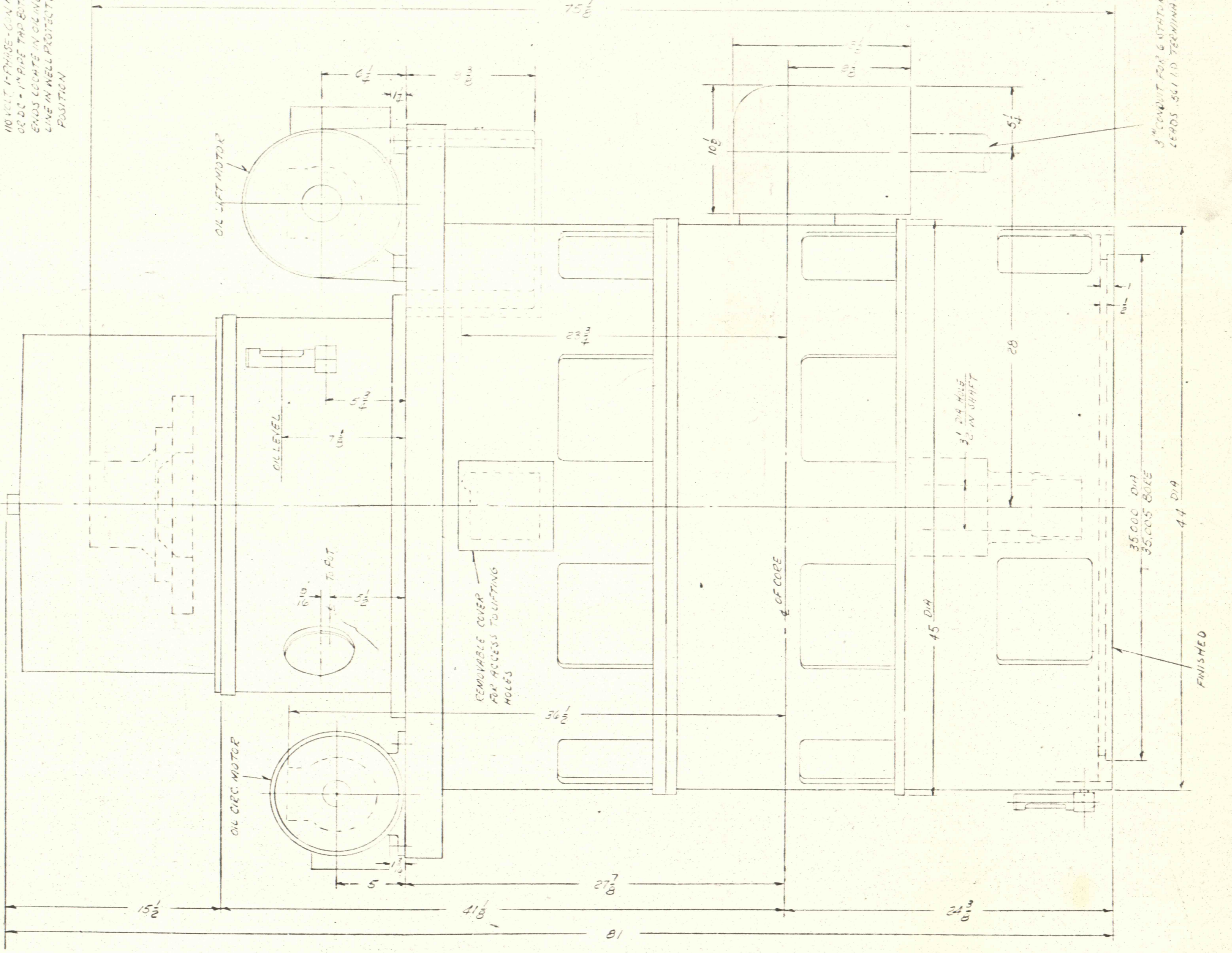


PARTS NOT SUPPLIED BY WESTINGHOUSE ELECTRIC CORPORATION - FOUNDATION BOLTS, SCOLD SHAFT, LOCKNUT & KEY

APPROX WEIGHT	
STATOR	4200 LBS
ROTOR	2500 LBS
GETHERS	1000 LBS
TOTAL	7700 LBS

OIL CAPACITY OF UPPER OIL POT - 1.12 GAL APPROX  
OIL CAPACITY OF LOWER OIL POT - 1.5 GAL APPROX  
USE A GOOD GRADE OF MACHINE OIL 200 TO 250 S.S.U. VISCOSITY AT 100°F

NOTE - COMPLETE SYSTEM MUST BE FILLED WITH OIL BEFORE STARTING MOTOR



FRAME - G-34-15  
UPPER BRG - 15" KINGSBURY WITH OIL LIFT  
LOWER BRG - 5X22

WESTINGHOUSE ELECTRIC CORPORATION	
TITLE - CS VERTICAL HOLLOW SHAFT MOTOR	
OUTLINE	
DIMENSIONS IN INCHES - SCALE N.T.S.	
DFTM. R. HALL	7/33
APP. G. S. R. C. 7/33	7/33
CHKD. R. K. 7/33	7/33
DIV. & PLANT LOCATION	

45-A-3372