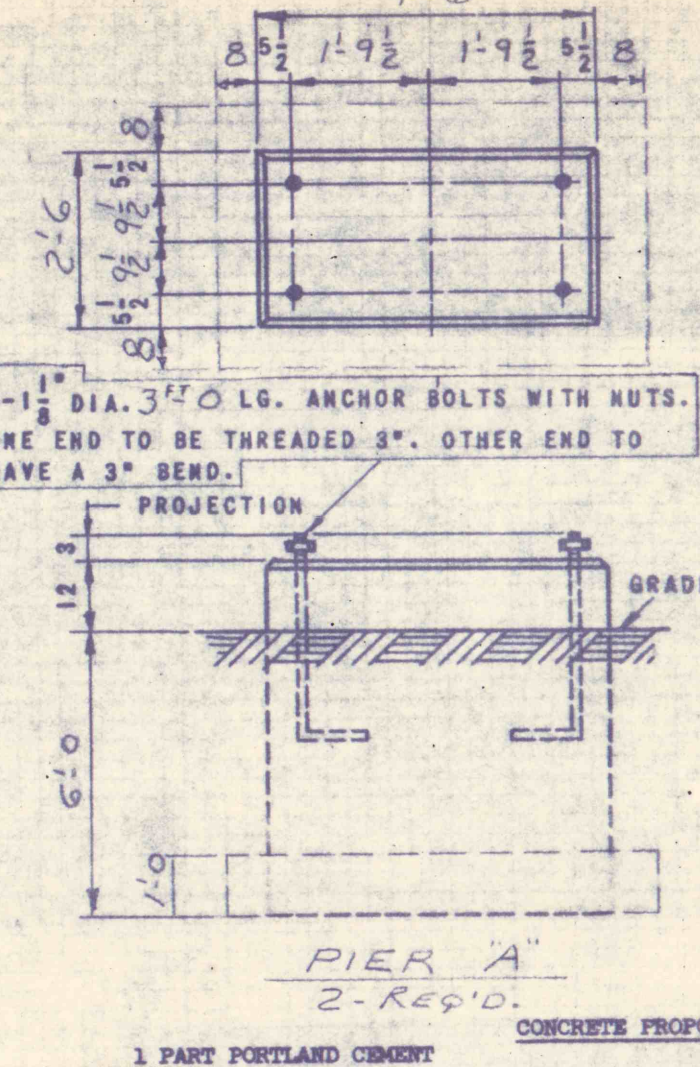
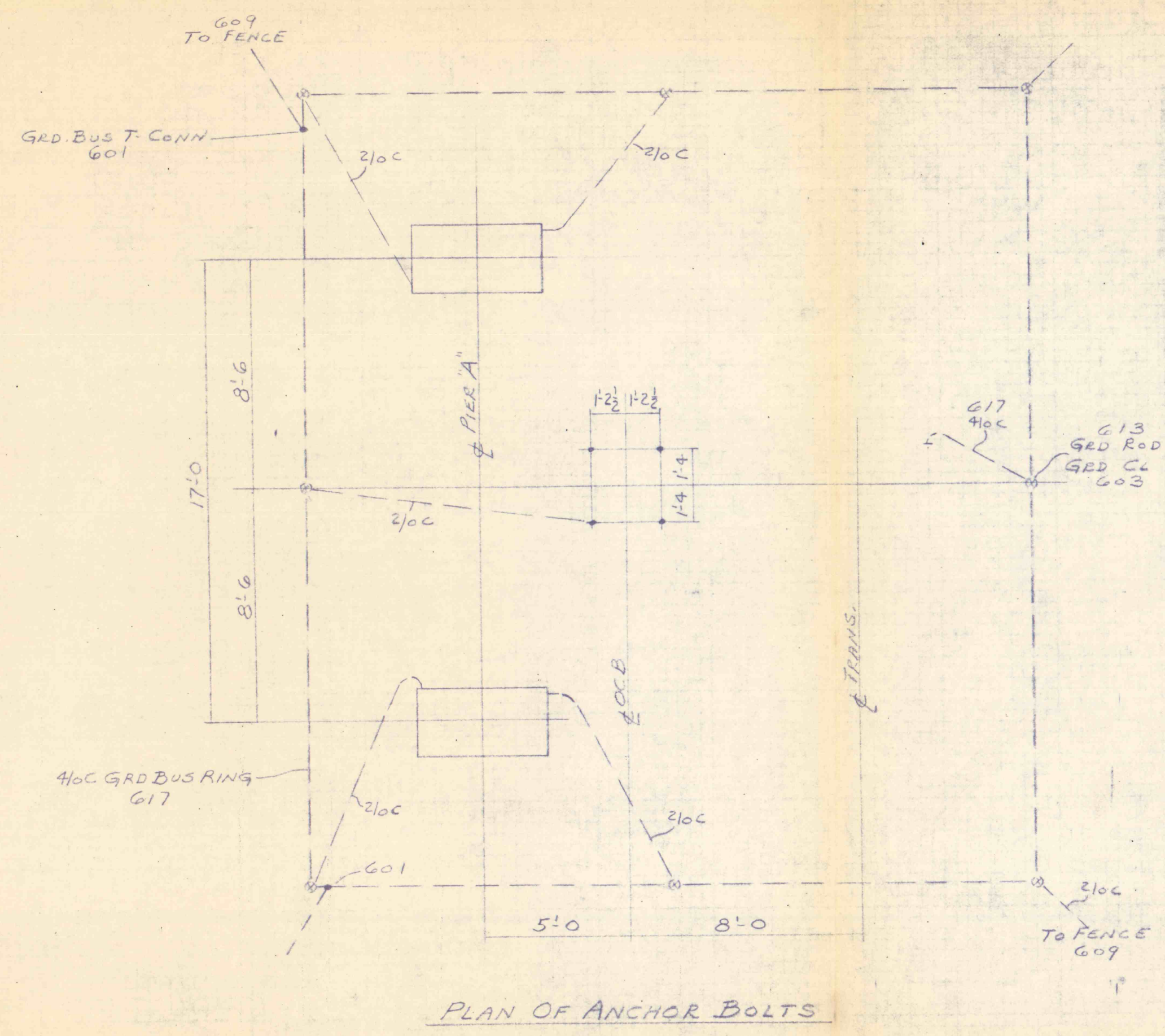
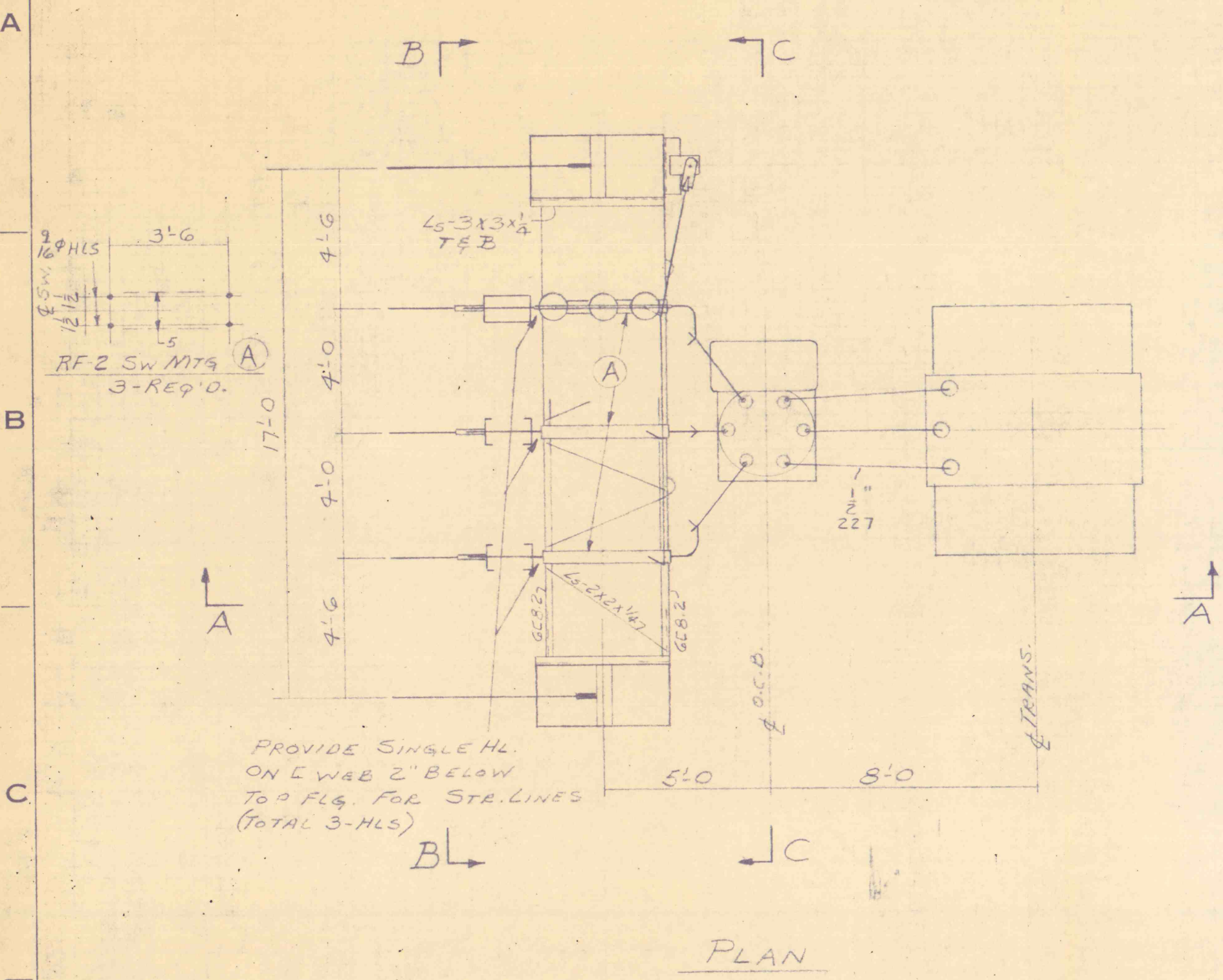


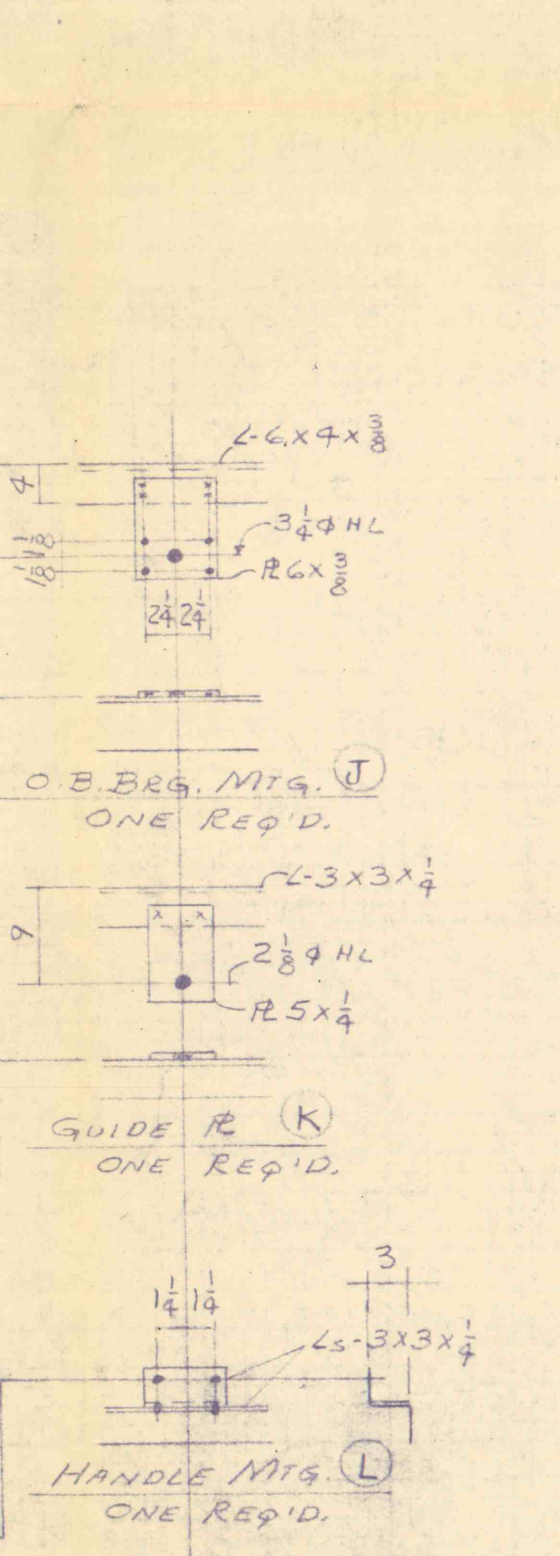
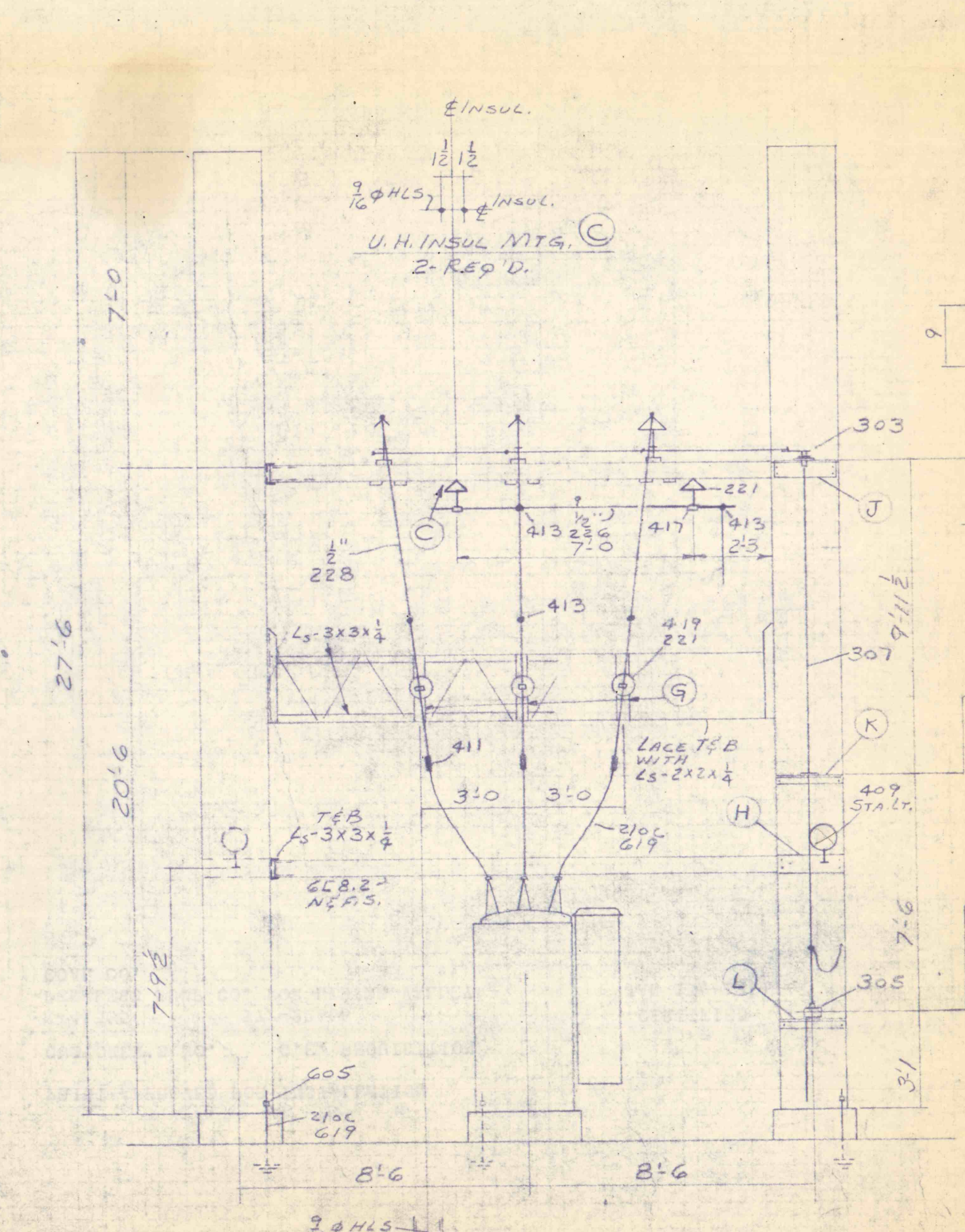
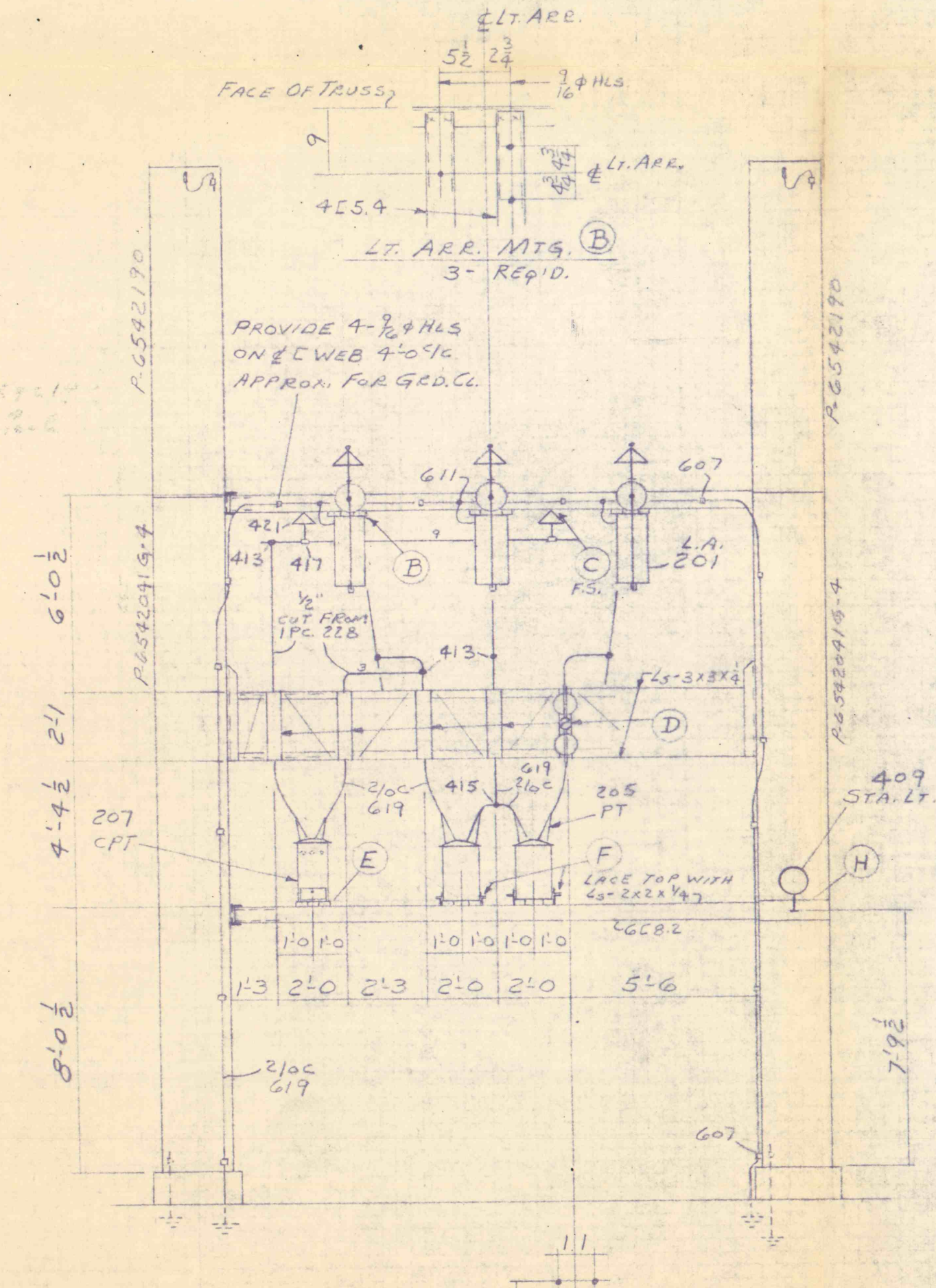
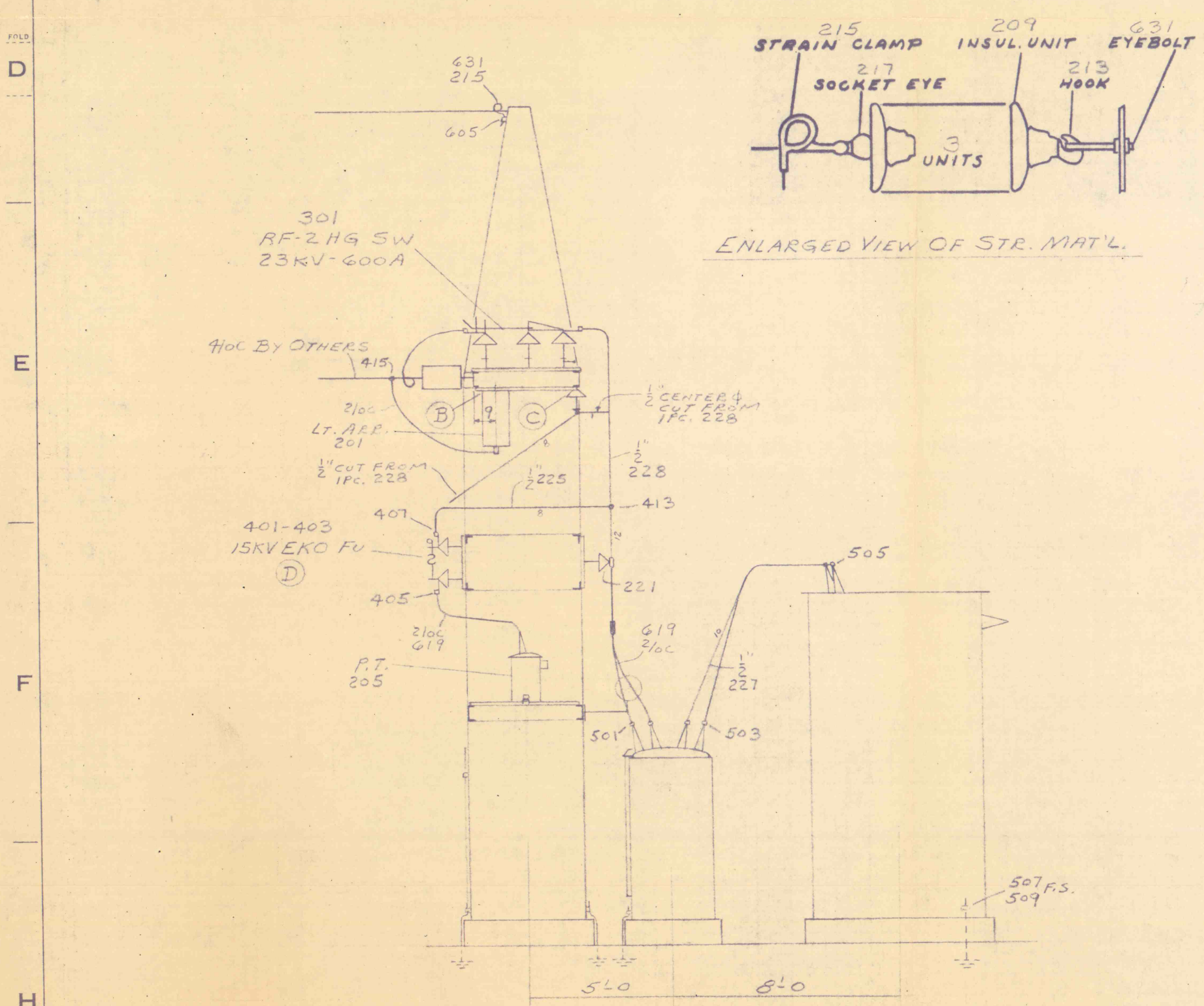
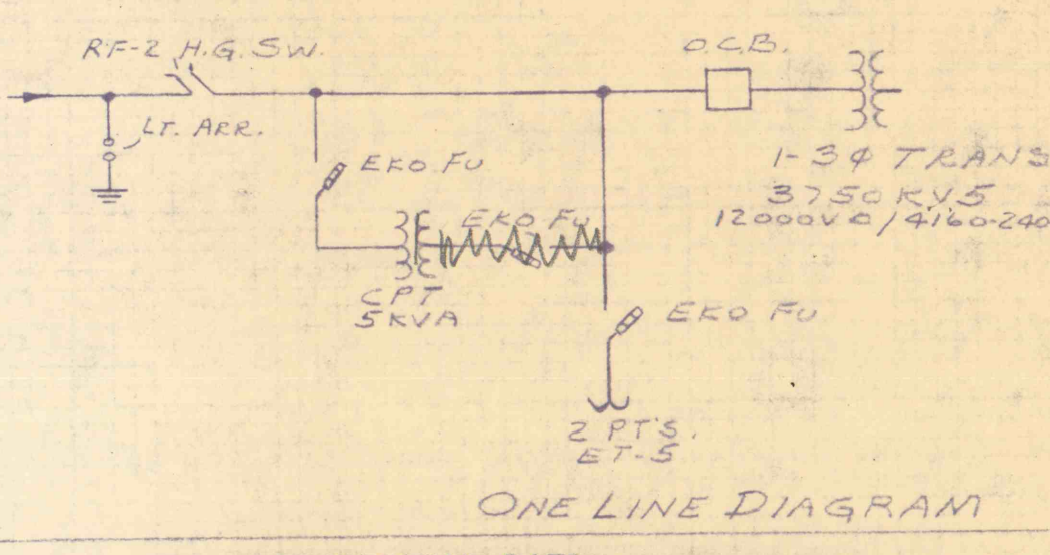
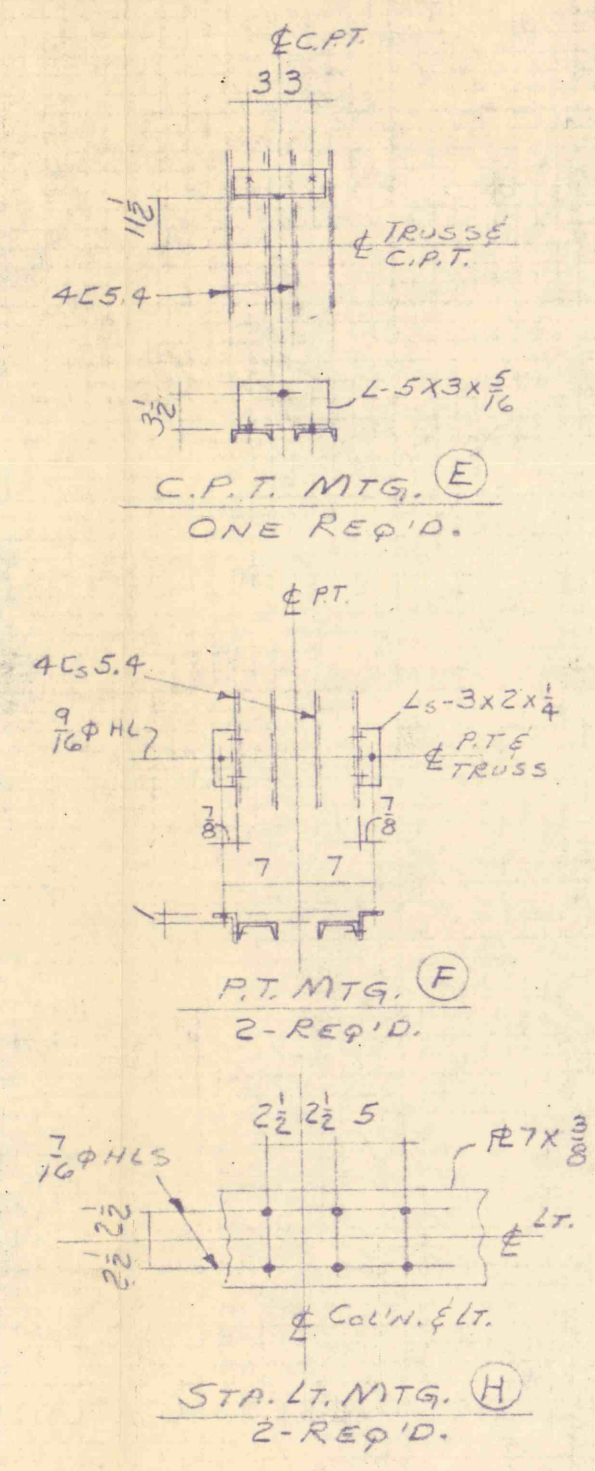
UNLESS OTHERWISE SPECIFIED USE THE FOLLOWING:
 APPLIED PRACTICES SURFACES TOLERANCES ON MACHINED DIMENSIONS
 FRACTIONS DECIMALS ANGLES
 0544D0115
 CONT. ON SHEET SHEET NO.

TITLE **ARG'Y. OF OUTDOOR STATION**
 FIRST MADE FOR FEELLESS PUMP DIV. INDIANAPOLIS, IND.
 REP. 372-22666



1 PART PORTLAND CEMENT
 2 1/2 PARTS SAND
 5 PARTS CRUSHED STONE

NOTE: THE DEPTH OF PIER BELOW GRADE AS SHOWN IS MINIMUM ALLOWED TO PREVENT OVERTURNING OF TOWER. DEPTH SHOULD BE INCREASED, IF NECESSARY TO AVOID FROST ACTION.
 IF TOWER IS LOCATED ON ROCK, DEPTH OF PIER SHOWN IS NOT NECESSARY, BUT ANCHORAGE TO ROCK MUST BE PROVIDED TO PREVENT OVERTURNING.
 SIZE OF PIER SHOWN IS SUFFICIENT FOR A SAFE BEARING PRESSURE ABOUT 4000 LBS. PER SQ. FT. IF SOIL IS ENCOUNTERED THAT WILL NOT WITHSTAND THIS PRESSURE, SIZE OF PIERS MUST BE INCREASED. 3/4" MIN. ON ALL EXPOSED EDGES.
 NOTE: SINCE THE STABILITY OF THE COLUMN FOUNDATION SHOWN IS DEPENDENT UPON AN EFFECTIVE SIDE PRESSURE, THE "BACK FILL" (WHEN REQUIRED) SHOULD BE WELL COMPACTED AND WATERED. THE USE OF LARGE STONES IN THE "BACK FILL" IS HIGHLY RECOMMENDED.



DESCRIPTION OF GROUPS	REVISIONS	PRINTS TO

MADE BY: *[Signature]* DATE: Feb. 7, 1959
 APPROVALS: *[Signature]*
 LOCATION: PHILA.
 SHEET NO. 10
 CONT. ON SHEET 9
 SHEET NO. 0544D0115