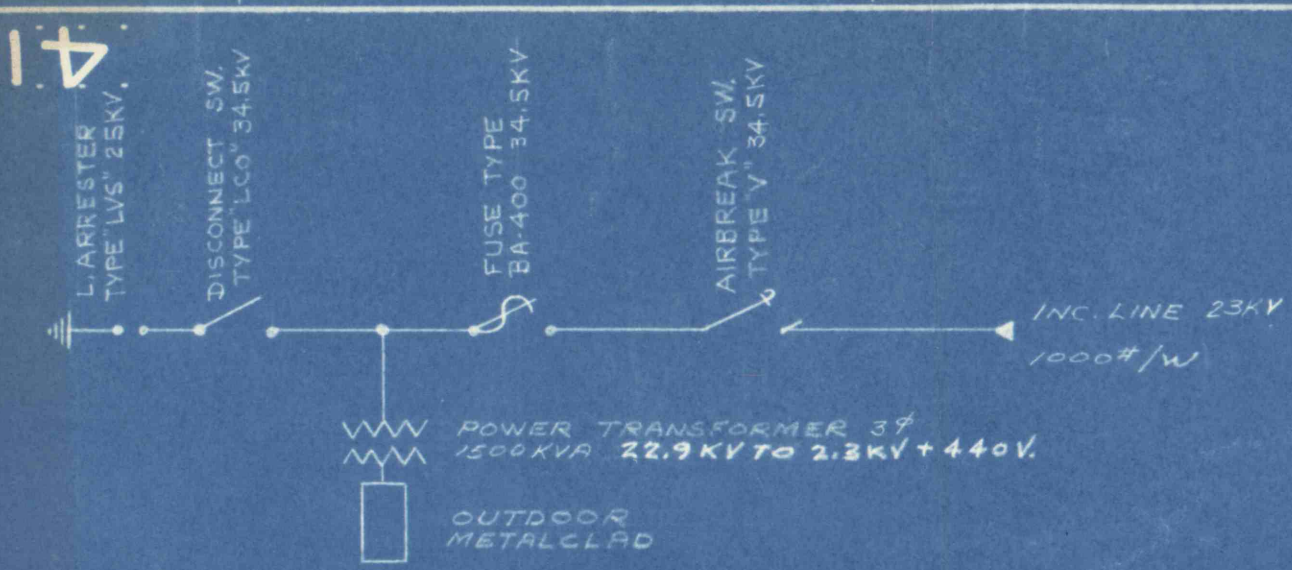
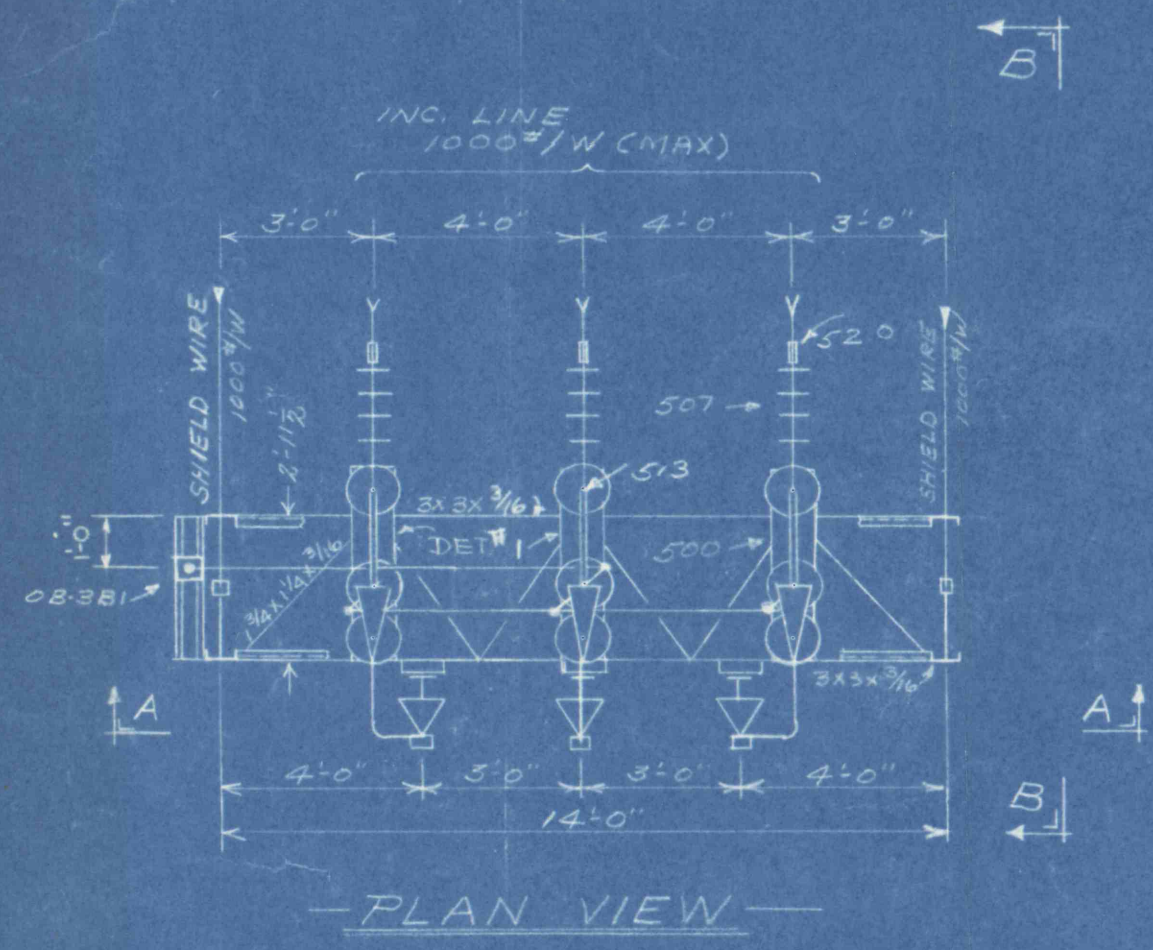


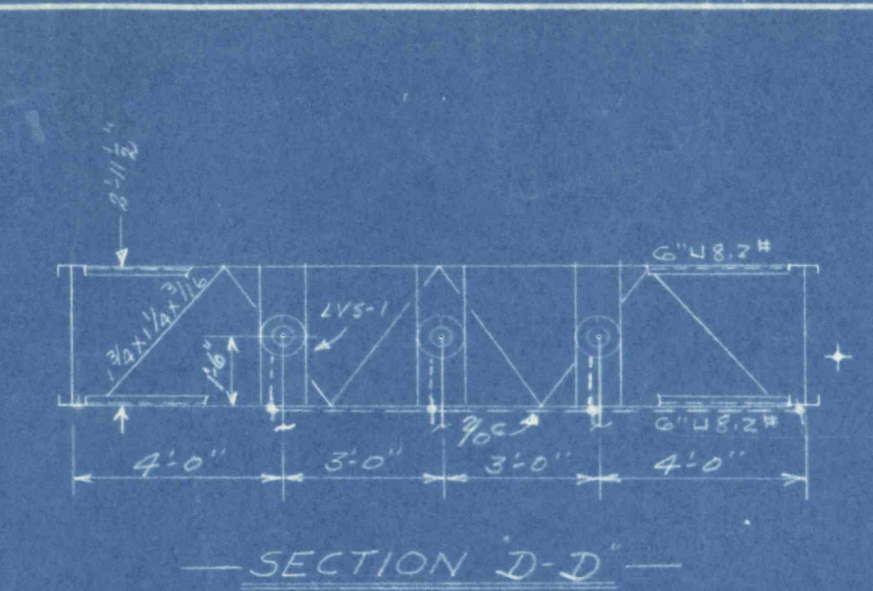
416 D433
99



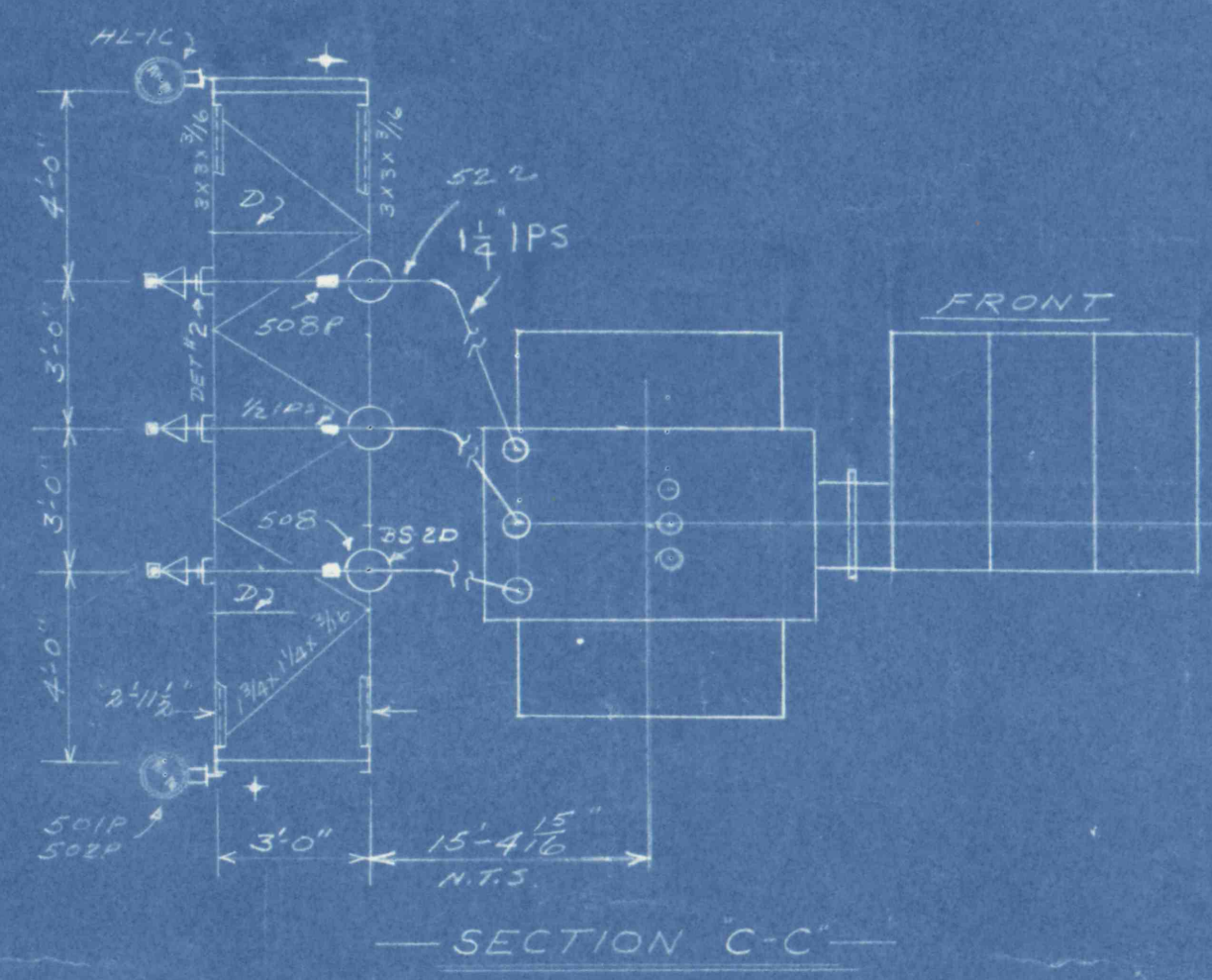
SINGLE LINE DIAGRAM



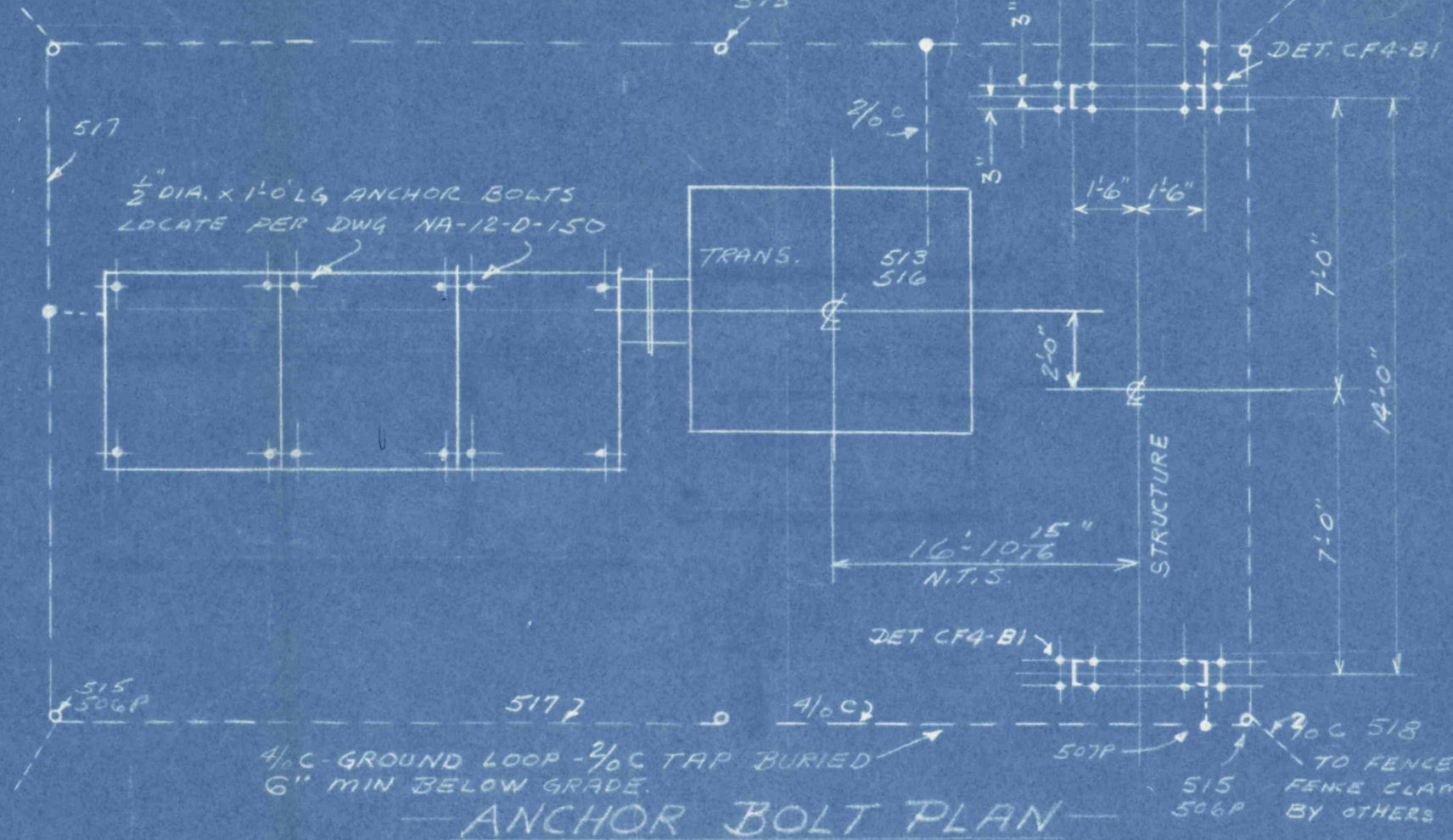
PLAN VIEW



SECTION D-D

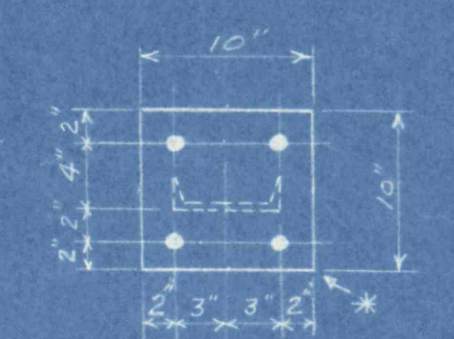


SECTION C-C

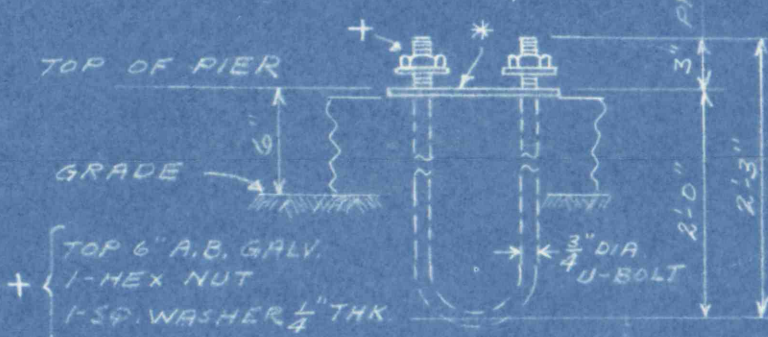


ANCHOR BOLT PLAN

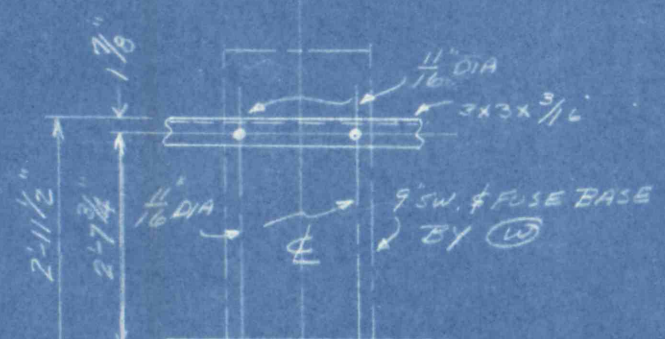
* LEVELING PLATE SHIPPED & INSTALLED WITH ANCHOR BOLTS. USE AS TEMPLATE WHEN SETTING BOLTS & GROUT TRUE AND LEVEL TO CORRECT ELEVATION.



DETAIL CF4-B1



DETAIL #2



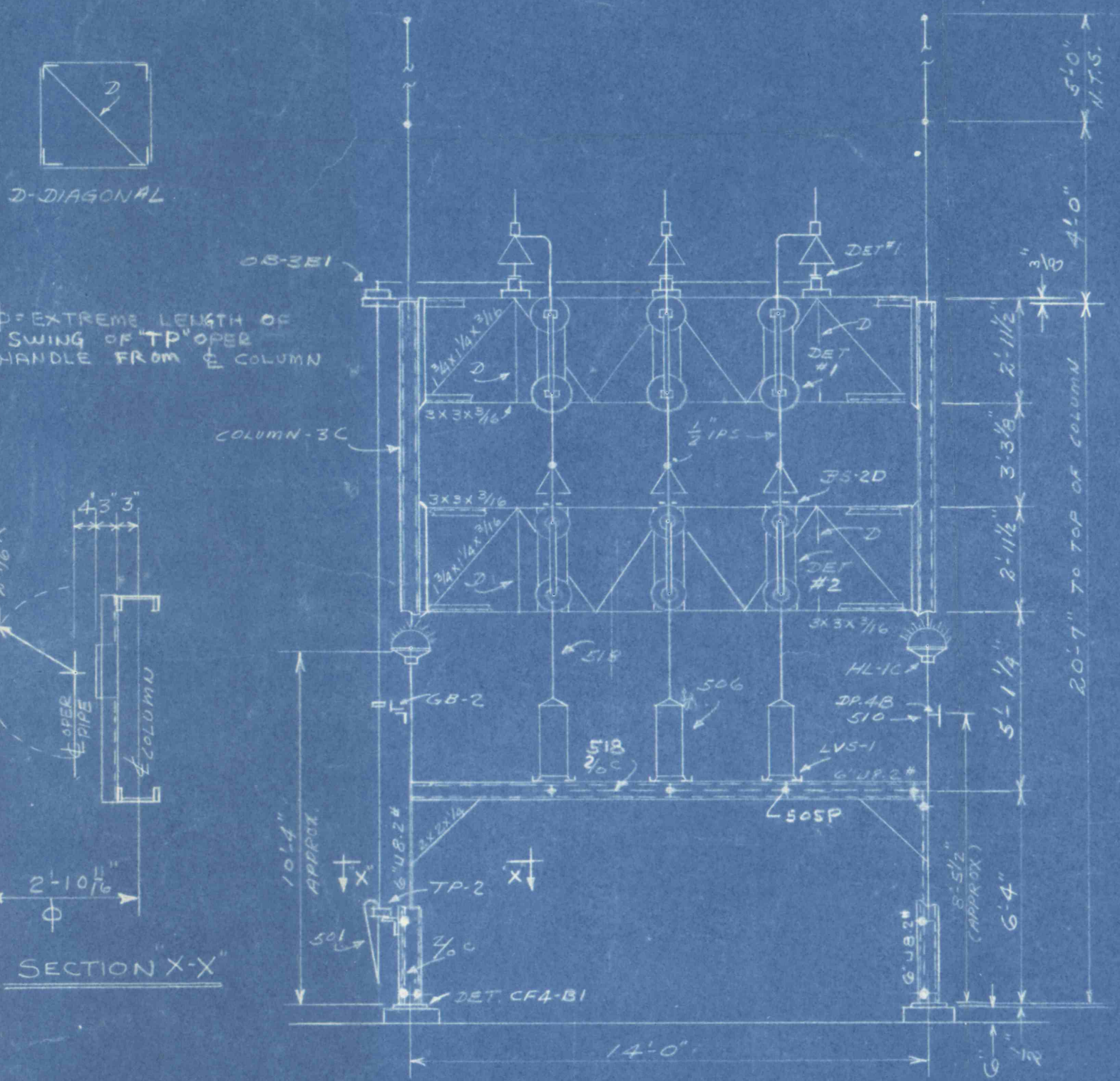
DETAIL #1

EQUIPMENT MTS. BOLTS WITH NUTS & LOCKWASHERS			
APP. QTY.	SIZE	REQ. WIRE	WIRE NUMBER
B-1	3/8 x 1 1/4	48	
B-2	1/2 x 1 1/2	20	20
B-3	3/8 x 1 3/4	10	

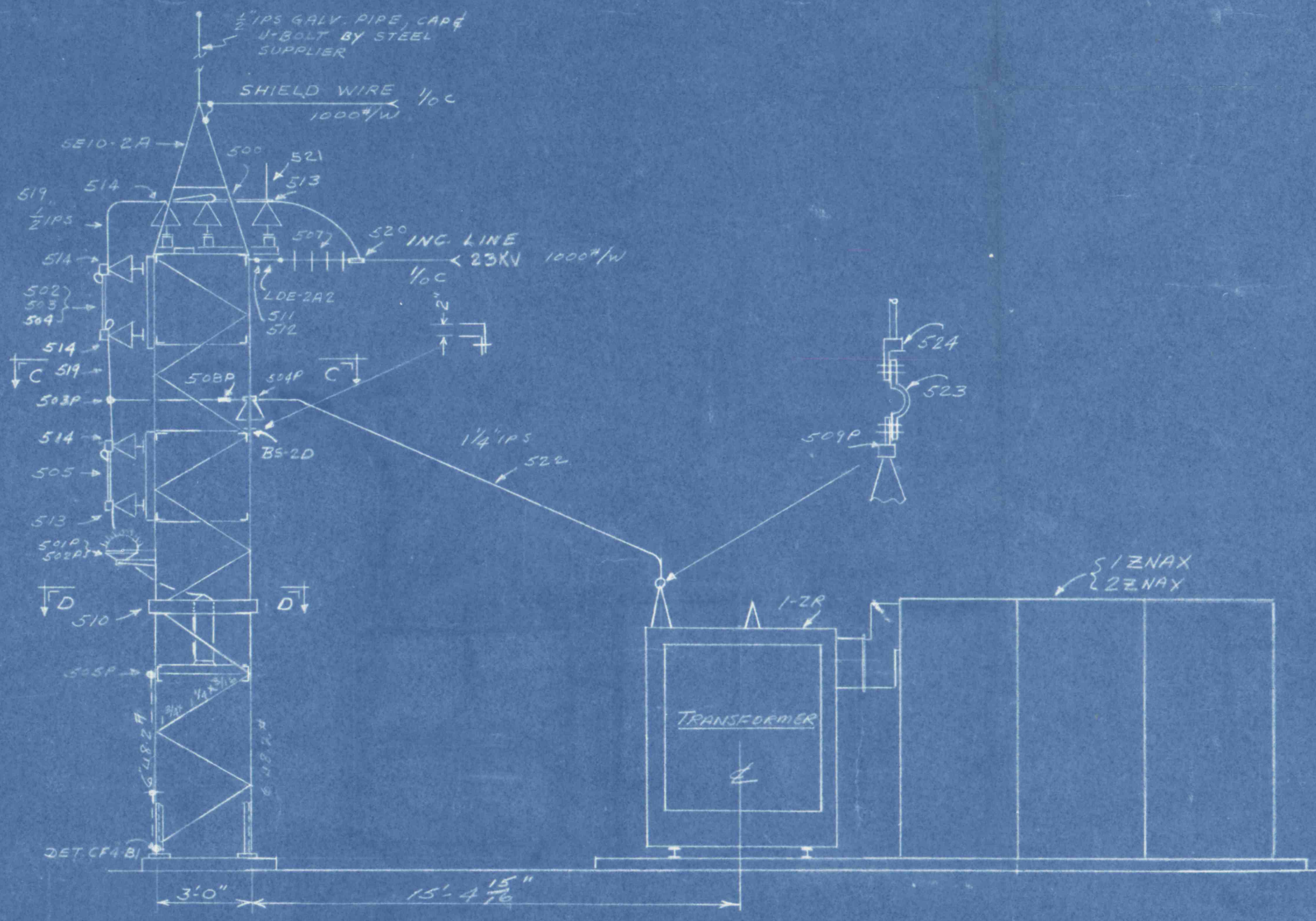
* REQ. WHEN 3/8 DIA BOLTS ARE USED IN 1/2 DIA HOLES.

LIST OF MATERIAL

ITEM NO.	REQ.	STYLE NO. CAT. NO. S.O. DWS. NO.	DESCRIPTION	REMARK
B-1 500	3	34Y-1267-05	SWITCH POLE UNIT TYPE V 34.5KV 600A HORIZ. MTD. SIM TO S#1766874 EXCEPT SPECIAL BASE DRILLING	
B-1 501	1	1534757	TYPE TP OFFSET OPER. MECHANISM FOR ITEM 500	
B-1 502	3	34Y-1267-BS1	FUSE MOUNTING TYPE BA-400 34.5KV SIM. TO STYLE NO. 144019 EXCEPT SPECIAL BASE DRILLING	
503	6	131417	FUSE UNITS TYPE BA-400 34.5KV 50E AMPS	2 SQUARE
504	3	1558180	FUSE HOLDER TYPE BA-400 34.5KV	2 SQUARE
B-1 505	3	465099944	DISCONNECT SWITCH TYPE LCO 23KV 600A SPST	
B-2 506	3	1225401	LIGHTNING ARRESTER TYPE LVS 25KV	
507	12	570265	STRAIN INSULATOR 10" DIA. CLEVELAND TYPE	4 SET
B-2 508	3	968770	APPARATUS INSULATOR 34.5KV 3" B.O. CAP PAN TYPE	
509	1	364235	HOCKSTICK 18" LG.	
510	1	1650300	WESTINGHOUSE DRESSPLATE (6 1/2" X 40)	
511	5	389524	3/8 DIA COPPER ALLOY PIN	
512	6		1/8 X 1/8 PH. BRK. COTTER PIN	
513	8	1718651	TERMINAL LUG #6W TO 250MM2	28 PAD
514	12	1718659	TERMINAL LUG 1/2 IPS	28 PAD
515	6	1766330	3/4 DIA X 12" LG. COPPERWELD GROUND ROD	
516	2		2-13 X 1/8 SI BRK. HEX HD BOLT #4901-1	28 PAD
517	150		FT. OF 17-1055 (330 DIA) 1/2 BARE COPPER CABLE #7421-1	
518	150		FT. OF 7-138 (414 DIA) 3/8 BARE COPPER CABLE #7421-1	
519	3	1251531	PCS OF 1/2 IPS COPPER TUBING 20' LG.	
520	5	179543	STRAIN CLAMP #6 TO 2/0	
521	3	1718698	AIRLING HORN FOR ITEM 500	
522	3	1251533	PCS OF 1/4 IPS COPPER TUBING 20' LG.	
523	3	1534512	SEMI RIGID EXPANSION BEND 800 A	
524	3	1718662	TERMINAL LUG 1/4 IPS	28 PAD
500P SET			GALVANIZED STEEL & HOCKSTICK CONT. 10' LG. LG. MTS.	STEEL SUPPLIER
B-3 501A	2	543586 0571	LIGHT WITH BRACKET & MOSUL BASE LAMP SOCKET	HOLDUPWARE
502P	2	P5-35	CLEAR GLASS MOSUL BASE LAMP 300 WATT 120VOLT	WESTCO
503P	3	774-0194	TEE CONNECTOR 1/2 IPS RUN & TAP	
504P	3	UP-12-3	ZUS SUPPORT CLAMP 1/4 IPS CAP MTS. 300	
505P	11	6C-147-61	COLUMN CLAMPS 90C TO FLAT (2 GRABE)	AMERICAN ELECTRIC
506P	6	6C-114-DIA	GROUND ROD CLAMPS 3/4 DIA RID - 1/2 90C (2 GRABE)	
507P	4	6C-113-BA	CROSS CONNECTOR 4/0 MAIN & 3/0 TAP	
508P	3	STTS-1204	STRAIGHT CONNECTOR 1/2 IPS TO 1/4 IPS	
509P	3	A35-11-B2-12	STUD CONNECTOR 1/2-12 STUD TO FLAT (28 PAD)	
REF. ITEMS				
12R	1	5.0-1R-8155 605D 360	TRANSFORMER 37 1500KVA 22.9KV TO 2.3KV + 440V.	(V)
12R 23NAX	1	NA 12D150	OUTDOOR METALCLAD 23KV	(V)



ELEVATION A-A



ELEVATION B-B

NO.	CHANGE	DATE	DESCRIPTION
1	54Y-1267		ANCHOR BOLT PLAN WAS SENT IN ADVANCE TO MURPHY STUBS
2	54Y-1267		MURPHY STUBS
3	54Y-1267		54Y-1267
4	54Y-1267		54Y-1267
5	54Y-1267		54Y-1267
6	54Y-1267		54Y-1267
7	54Y-1267		54Y-1267
8	54Y-1267		54Y-1267
9	54Y-1267		54Y-1267
10	54Y-1267		54Y-1267
11	54Y-1267		54Y-1267
12	54Y-1267		54Y-1267
13	54Y-1267		54Y-1267
14	54Y-1267		54Y-1267
15	54Y-1267		54Y-1267
16	54Y-1267		54Y-1267
17	54Y-1267		54Y-1267
18	54Y-1267		54Y-1267
19	54Y-1267		54Y-1267
20	54Y-1267		54Y-1267
21	54Y-1267		54Y-1267
22	54Y-1267		54Y-1267
23	54Y-1267		54Y-1267
24	54Y-1267		54Y-1267
25	54Y-1267		54Y-1267
26	54Y-1267		54Y-1267
27	54Y-1267		54Y-1267
28	54Y-1267		54Y-1267
29	54Y-1267		54Y-1267
30	54Y-1267		54Y-1267
31	54Y-1267		54Y-1267
32	54Y-1267		54Y-1267
33	54Y-1267		54Y-1267
34	54Y-1267		54Y-1267
35	54Y-1267		54Y-1267
36	54Y-1267		54Y-1267
37	54Y-1267		54Y-1267
38	54Y-1267		54Y-1267
39	54Y-1267		54Y-1267
40	54Y-1267		54Y-1267
41	54Y-1267		54Y-1267
42	54Y-1267		54Y-1267
43	54Y-1267		54Y-1267
44	54Y-1267		54Y-1267
45	54Y-1267		54Y-1267
46	54Y-1267		54Y-1267
47	54Y-1267		54Y-1267
48	54Y-1267		54Y-1267
49	54Y-1267		54Y-1267
50	54Y-1267		54Y-1267
51	54Y-1267		54Y-1267
52	54Y-1267		54Y-1267
53	54Y-1267		54Y-1267
54	54Y-1267		54Y-1267
55	54Y-1267		54Y-1267
56	54Y-1267		54Y-1267
57	54Y-1267		54Y-1267
58	54Y-1267		54Y-1267
59	54Y-1267		54Y-1267
60	54Y-1267		54Y-1267
61	54Y-1267		54Y-1267
62	54Y-1267		54Y-1267
63	54Y-1267		54Y-1267
64	54Y-1267		54Y-1267
65	54Y-1267		54Y-1267
66	54Y-1267		54Y-1267
67	54Y-1267		54Y-1267
68	54Y-1267		54Y-1267
69	54Y-1267		54Y-1267
70	54Y-1267		54Y-1267
71	54Y-1267		54Y-1267
72	54Y-1267		54Y-1267
73	54Y-1267		54Y-1267
74	54Y-1267		54Y-1267
75	54Y-1267		54Y-1267
76	54Y-1267		54Y-1267
77	54Y-1267		54Y-1267
78	54Y-1267		54Y-1267
79	54Y-1267		54Y-1267
80	54Y-1267		54Y-1267
81	54Y-1267		54Y-1267
82	54Y-1267		54Y-1267
83	54Y-1267		54Y-1267
84	54Y-1267		54Y-1267
85	54Y-1267		54Y-1267
86	54Y-1267		54Y-1267
87	54Y-1267		54Y-1267
88	54Y-1267		54Y-1267
89	54Y-1267		54Y-1267
90	54Y-1267		54Y-1267
91	54Y-1267		54Y-1267
92	54Y-1267		54Y-1267
93	54Y-1267		54Y-1267
94	54Y-1267		54Y-1267
95	54Y-1267		54Y-1267
96	54Y-1267		54Y-1267
97	54Y-1267		54Y-1267
98	54Y-1267		54Y-1267
99	54Y-1267		54Y-1267
100	54Y-1267		54Y-1267

STANDARD MTS. DETAILS	INDEX Dwg. No.
CF4-B1	126-A-610
3C	126-A-752
TP-2	126-A-756
50-2	126-A-754
50-2A	126-A-754
50-2B	126-A-754
50-2C	126-A-754
50-2D	126-A-754
50-2E	126-A-754
50-2F	126-A-754
50-2G	126-A-754
50-2H	126-A-754
50-2I	126-A-754
50-2J	126-A-754
50-2K	126-A-754
50-2L	126-A-754
50-2M	126-A-754
50-2N	126-A-754
50-2O	126-A-754
50-2P	126-A-754
50-2Q	126-A-754
50-2R	126-A-754
50-2S	126-A-754
50-2T	126-A-754
50-2U	126-A-754
50-2V	126-A-754
50-2W	126-A-754
50-2X	126-A-754
50-2Y	126-A-754
50-2Z	126-A-754

G.O. No. 11-11910-ZY 23KV

WESTINGHOUSE ELECTRIC CORPORATION
 TITLE: PEERLESS RUMP DIVISION, COMMONWEALTH OF PENNSYLVANIA
 SUSQUEHANNA COLLIERIES, CAMERON MINE PROJECT #8
 DIMENSIONS IN INCHES - SCALE: 1/4" = 1'-0"
 DFTM: J.M. Brock
 MURPHY STUBS
 416 D433
 ASSEM. SWGR. & DEVICES ASSEMBLY SWGR. EAST PITTSBURGH, PA. U.S.A.