

MARK	NO. PCS.	SIZE	LENG.
------	----------	------	-------

MARK	NO. PCS.	SIZE	LENG.
4D	1	TRUSS	
4D1	1	L3x3x1/2	13 4 3/4
4D2	1	do	13 4 3/4
4D3	1	do	13 4 3/4
4D4	1	do	13 4 3/4
a	4	R3/4x4	0 3 3/4
4D5	8	L1 1/2x1 1/4x1/8	3 7
4D6	16	do	3 3 3/4
4D7	6	L5x3 1/2x1/4	0 9
4D8	3	L5x3x1/4	0 5
4D9	2	L4x3x1/4	3 5 1/2
4D10	2	do	3 5 1/2
4D11	2	L1 1/2x1 1/4x1/8	3 9 1/4

82	5/8" G.M.B.	0 14	Sp. No. 12160
2	3/8" G.M.B.	0 1 3/4	do

4D12	1	L2 1/2x2 1/2x1/4	3 4 1/4
4D13	6	L3 1/2x2 1/2x1/4	0 2 1/4
	3	3/8" G.M.B.	0 1 3/4

4D14	1	L2 1/2x2 1/2x1/4	2 11 3/4
4D15	1	do	0 5
	2	5/8" G.M.B.	0 14

4D16	1	L2 1/2x2 1/2x1/4	2 11 3/4
4D15	1	do	0 5
	2	5/8" G.M.B.	0 14

4D17	1	L2 1/2x2 1/2x1/4	2 11 3/4
4D15	1	do	0 5
	2	5/8" G.M.B.	0 14

4D18	1	L2 1/2x2 1/2x1/4	2 11 3/4
4D15	1	do	0 5
	2	5/8" G.M.B.	0 14

4D19	1	L2 1/2x2 1/2x1/4	2 11 3/4
4D15	1	do	0 5
	2	5/8" G.M.B.	0 14

4D20	1	L2 1/2x2 1/2x1/4	2 11 3/4
4D15	1	do	0 5
	2	5/8" G.M.B.	0 14

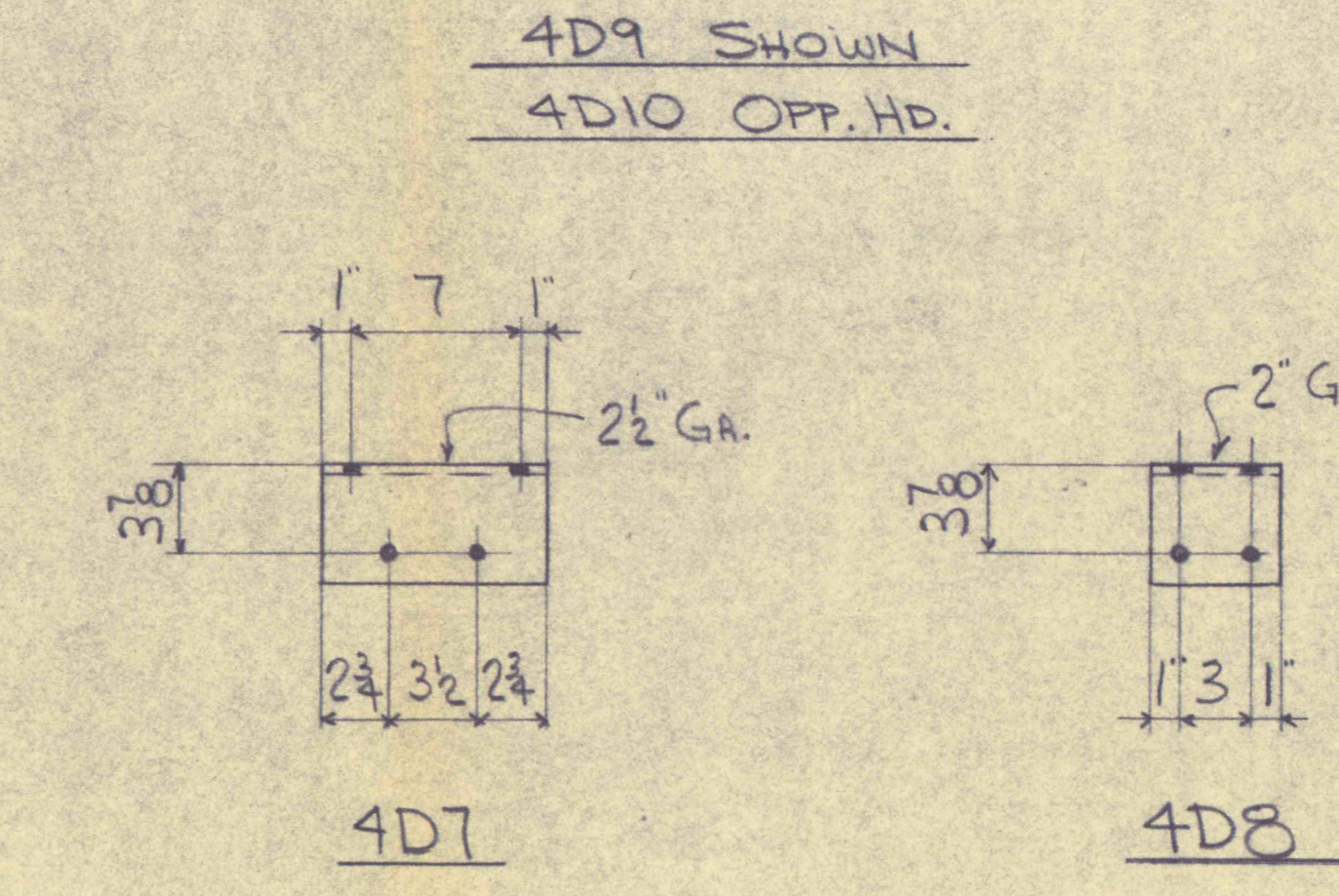
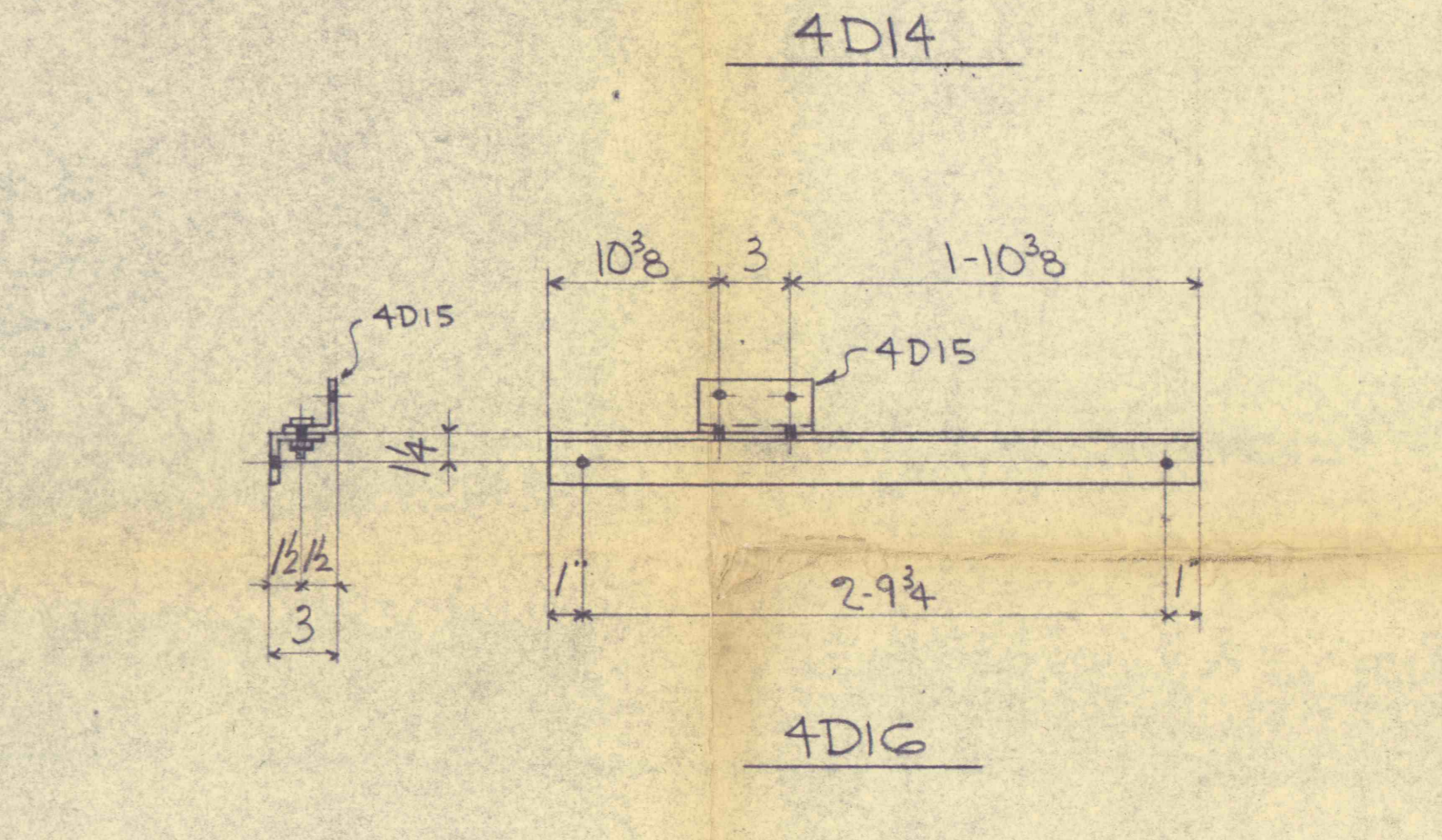
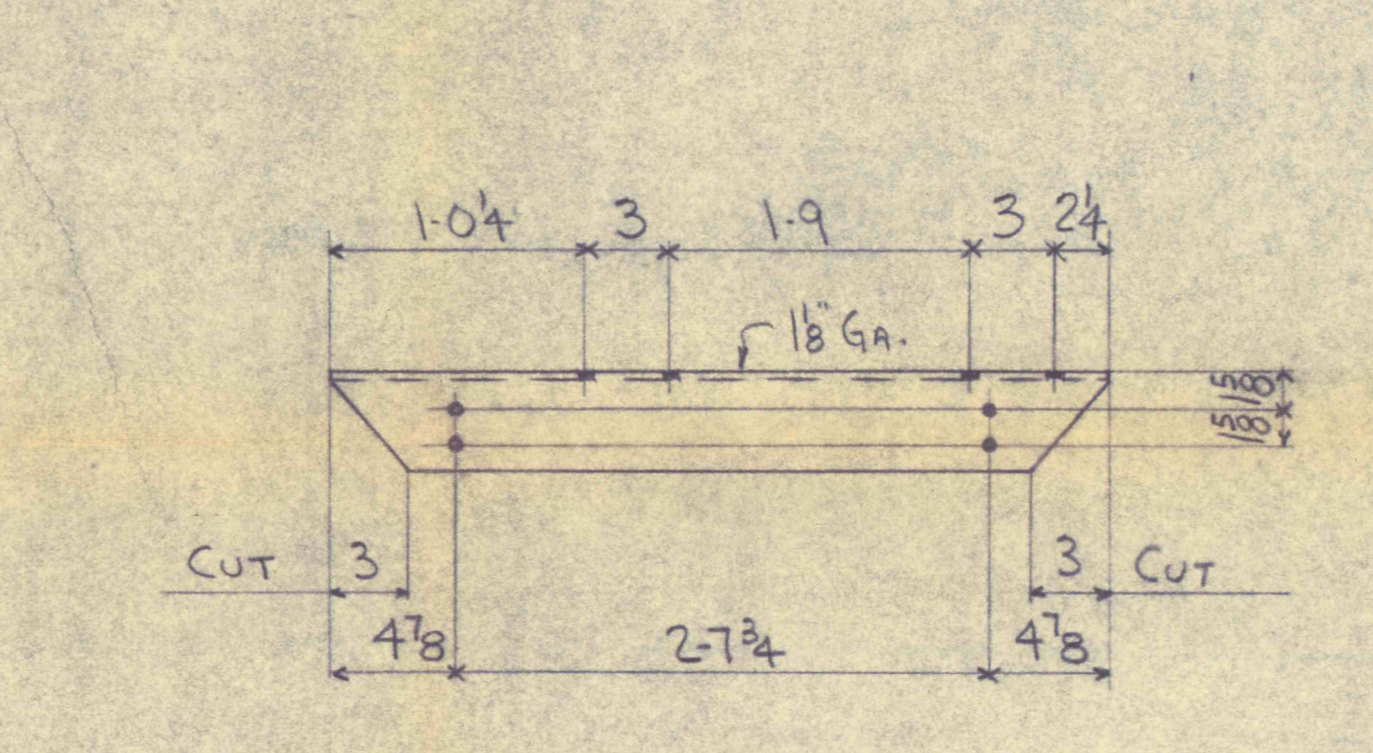
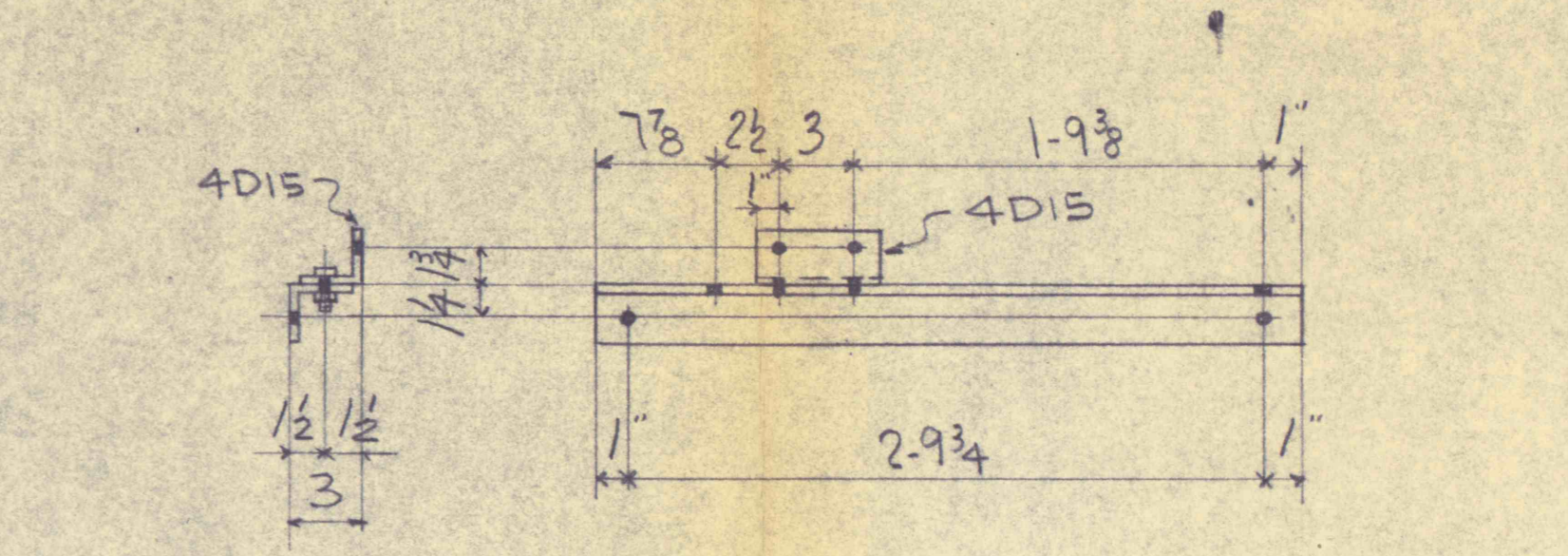
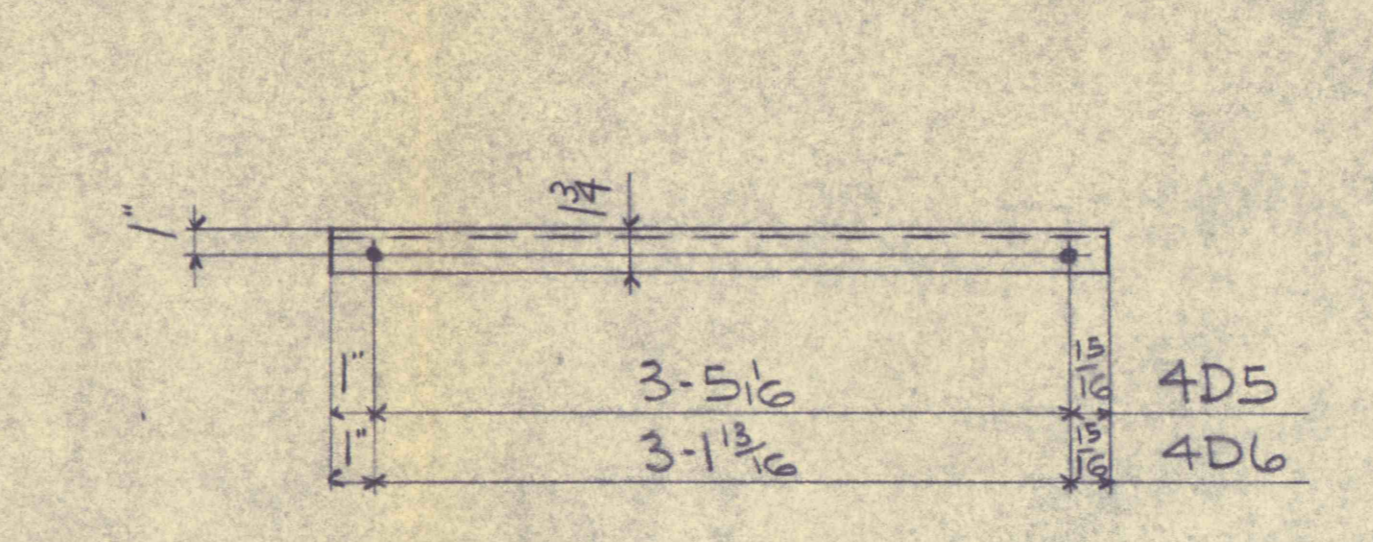
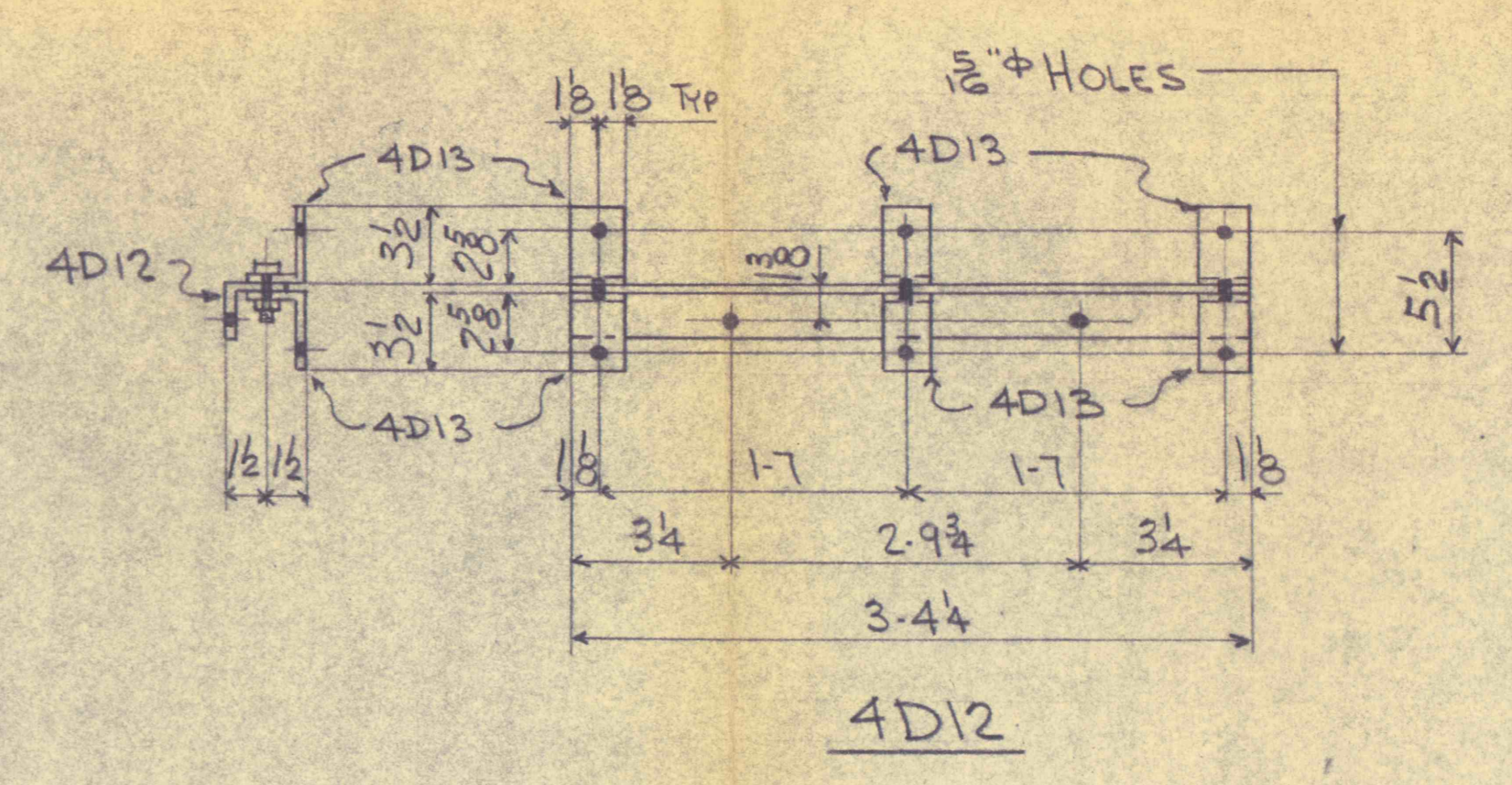
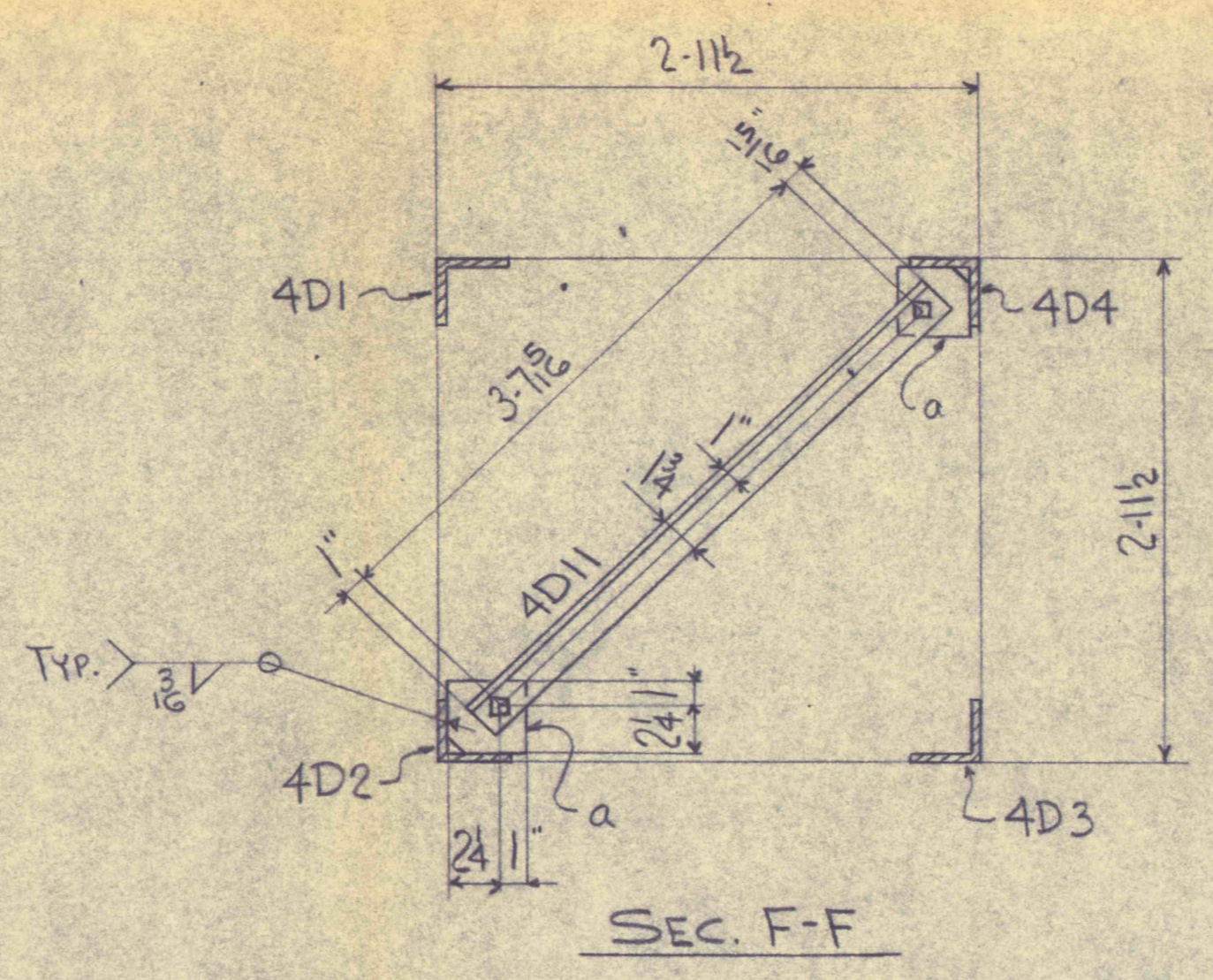
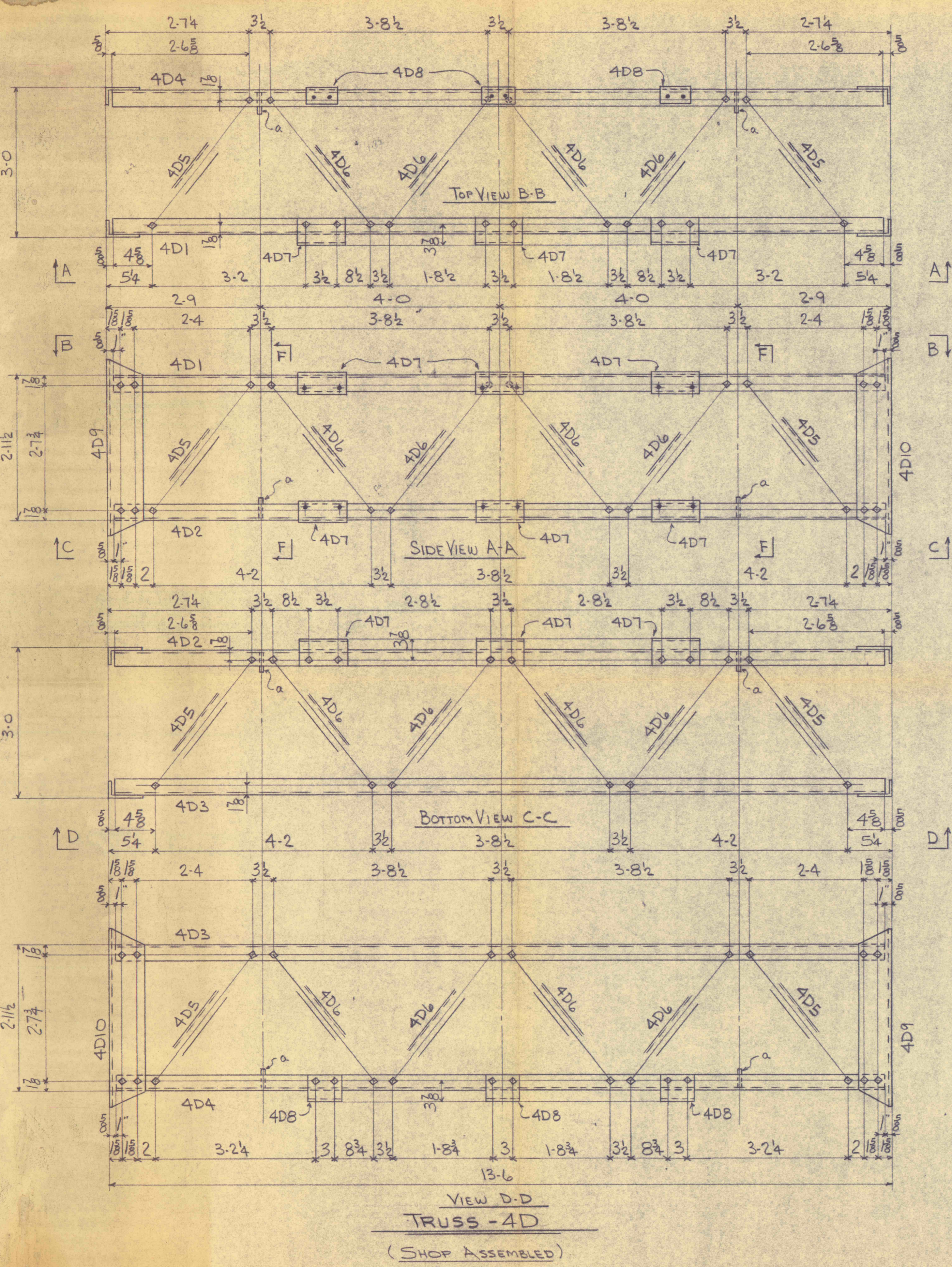
4D21	1	L2 1/2x2 1/2x1/4	2 11 3/4
4D15	1	do	0 5
	2	5/8" G.M.B.	0 14

4D22	1	L2 1/2x2 1/2x1/4	2 11 3/4
4D15	1	do	0 5
	2	5/8" G.M.B.	0 14

4D23	1	L2 1/2x2 1/2x1/4	2 11 3/4
4D15	1	do	0 5
	2	5/8" G.M.B.	0 14

4D24	1	L2 1/2x2 1/2x1/4	2 11 3/4
4D15	1	do	0 5
	2	5/8" G.M.B.	0 14

4D25	1	L2 1/2x2 1/2x1/4	2 11 3/4
4D15	1	do	0 5
	2	5/8" G.M.B.	0 14



NOTES:  
 ALL STEEL TO BE H.D. GALVANIZED  
 ERECTION DWG. I505-E1  
 DESIGN DWG. -W.E.C. 41GD433

CERTIFIED FOR CONSTRUCTION  
 H.C. Morgan 7/10/58  
 PEERLESS PUMP PON-30499  
 JOB #79962-V IN-11910  
 CAMERON MINE PROJECT #B

HOLES - 1/8" UNLESS NOTED

PROPERTY OF LEE C. MOORE CORPORATION  
 THIS PRINT IS RELEASED TO ILLUSTRATE OUR PRODUCT MORE CLEARLY TO YOU. WE RESPECTFULLY REQUEST THAT IT NOT BE REPRODUCED OR THAT IT NOT BE USED FOR ANY OTHER PURPOSE WITHOUT OUR WRITTEN CONSENT.

LEE C. MOORE CORPORATION  
 PITTSBURGH, PA. • TULSA, OKLA. • DALLAS, TEXAS • WICHITA, KANSAS

TRUSS DETAILS - CAMERON MINE PROJECT #B  
 PEERLESS PUMP DIVISION, COM. OF PA.  
 WASHINGTON, ELECTRIC CORPORATION

I-505-4D  
 DRWN. J.S. 6-19-58  
 CHD. L.P.C. 7-9-58