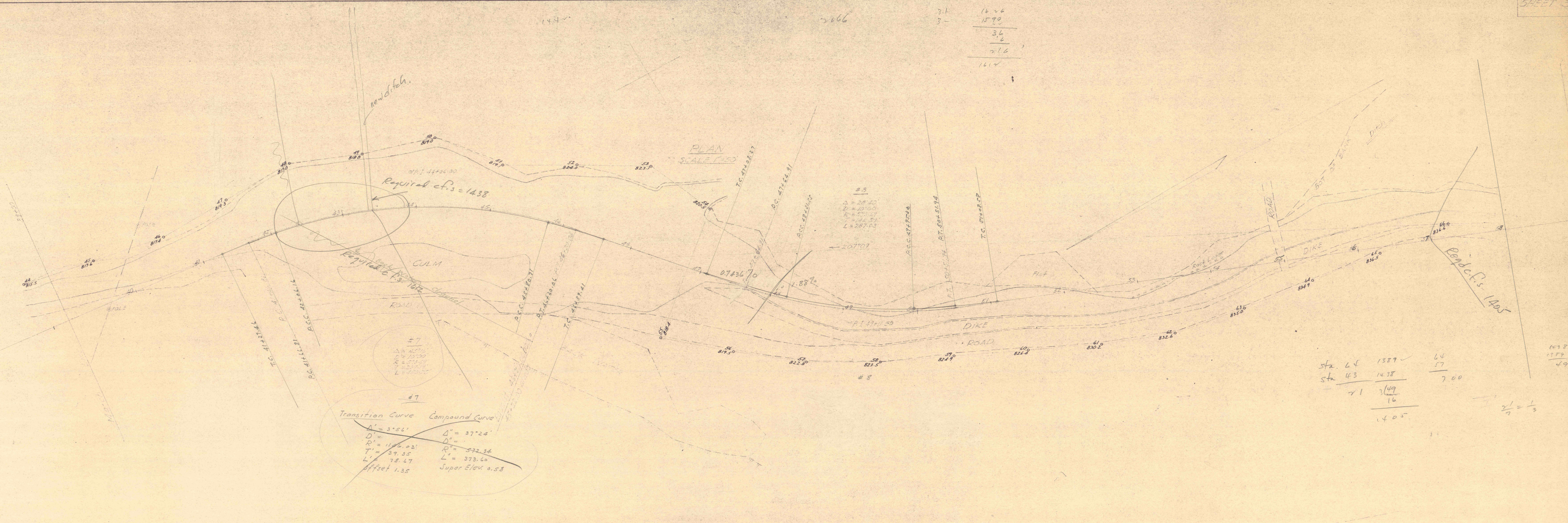


3.1 16.26
 3- 15.90

 3.6
 2.16

 1.44



#7

Transition Curve

Compound Curve

$\Delta' = 37.24'$ $\Delta'' = 37.24'$

$D' = 1176.03'$ $D'' = 572.34'$

$T' = 39.35'$ $T'' = 373.60'$

$L' = 78.47'$ $L'' = 373.60'$

offset 1.35 Super Elev. 0.58

#8

$\Delta = 28.10'$

$D = 1100'$

$T = 14.51'$

$L = 287.03'$

Sta 64 1387 ✓ 64

Sta 43 1438 57

71 1497 7.00

16

1405

$\frac{2}{3} = \frac{1}{3}$

PROFILE

50 HORIZ.

SCALE 1"=10 VERT.

