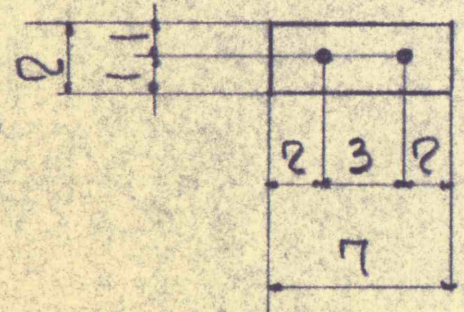
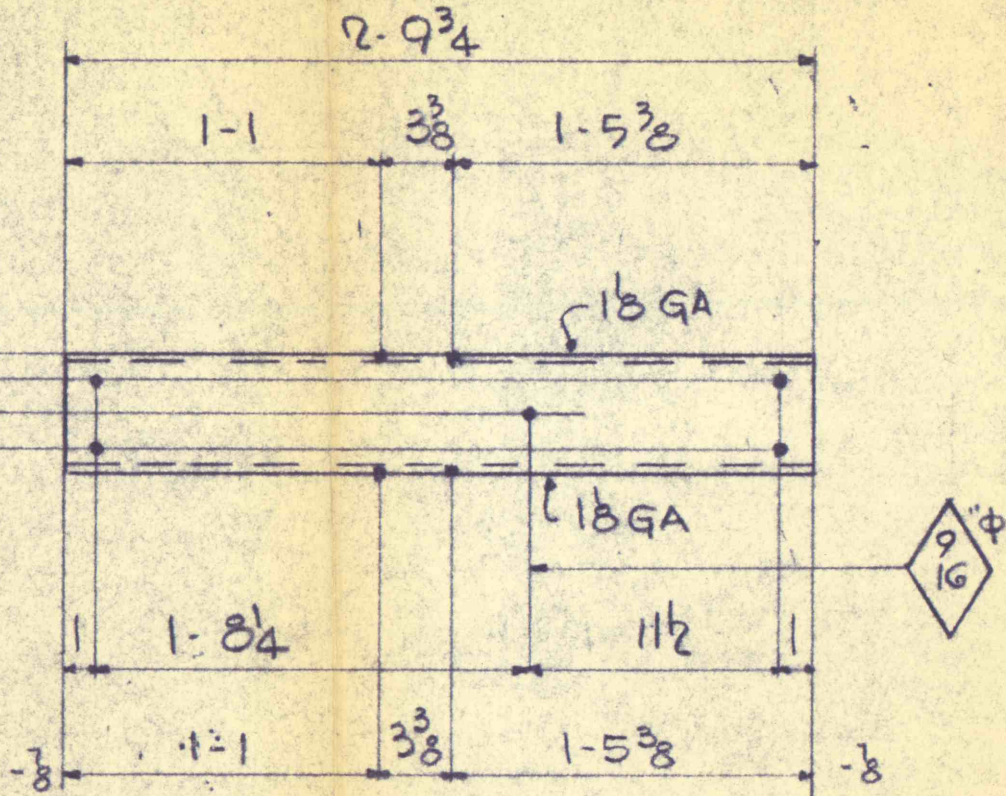


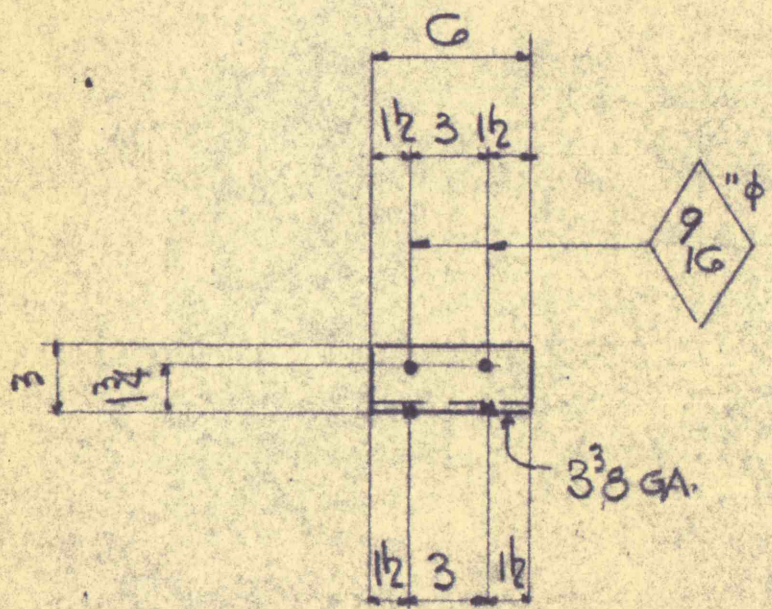
12C1



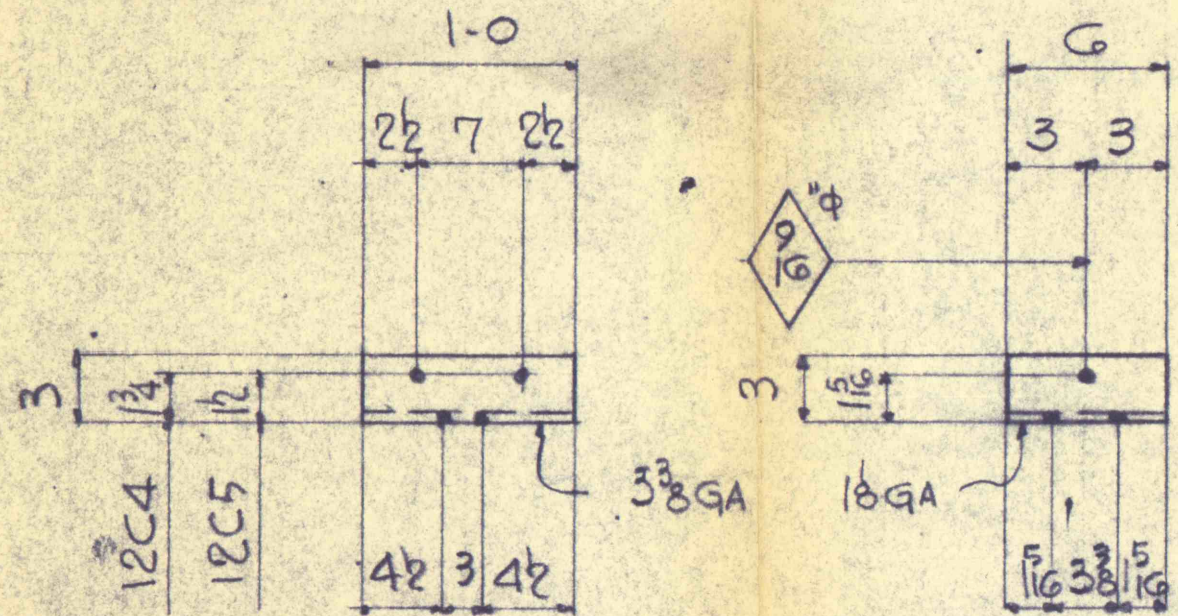
12C7



12C3



12C2



12C4 - As NOTED

12C5 " " "

12C6

NOTES

- ALL STEEL TO BE GALV.
- L.C.M. ERECTION
- I-747-E1
- WEC DESIGN
- 420-D-965

MARK	NO. PCS.	SIZE	LENGTH		TOTAL LGTH.	TOTAL WGT.
			FT.	INS.		
12C1	6	L6x4x3/8	1	0		
12C2	3	L5x3x1/4	0	6		
12C3	3	5CG.7	2	9 3/4		
12C4	3	L5x3x1/4	1	0		
12C5	3	L5x3x1/4	1	0		
12C6	6	L3x2x3/16	0	6		
12C7	3	2x4	0	7		

ALL HOLES 1/16" UNLESS NOTED

COORD.	ENGR.

LEE C. MOORE CORPORATION
 PITTSBURGH, PA. • TULSA, OKLA. • DALLAS, TEXAS • WICHITA, KANSAS

DETAILS 13.8/4.16 KV OUTDOOR SUBSTATION
 FAIRBANKS MORSE & CO. FAIR LAWN, N.J.
 WESTINGHOUSE ELECTRIC CORPORATION

I-747-12C
 DRWN. MARCHIONDA 4-14-59
 CHKD. RDMC 5-1-59
 APPD.