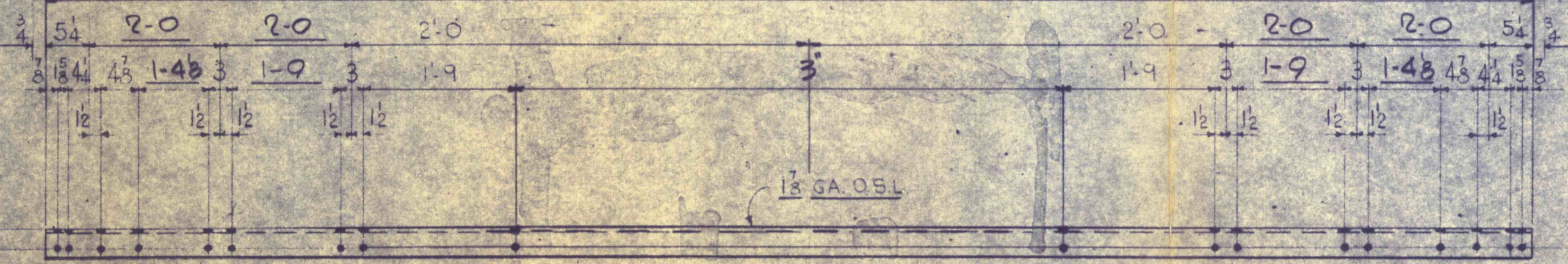
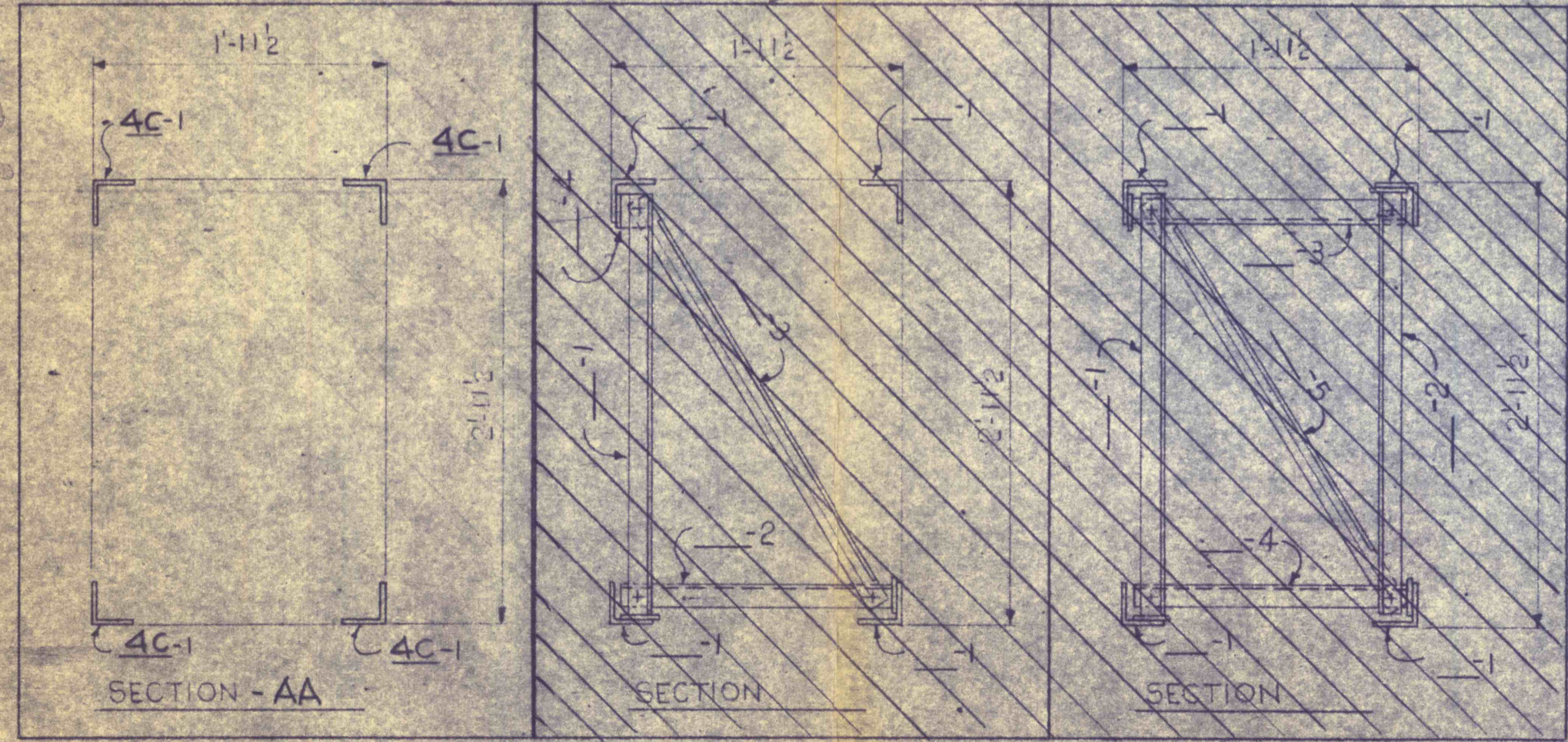
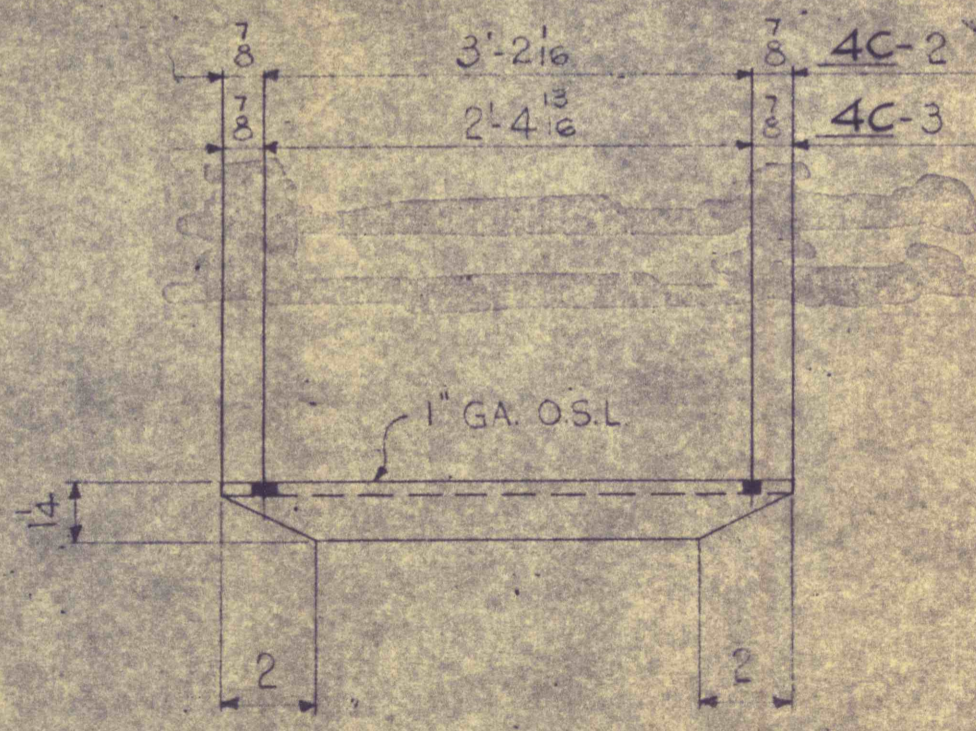


KEY PLAN

12-10 1/2



4C1



NOTE:
ALL MATERIAL TO BE HOT DIP GALVANIZED
L.C.M. CORP. ERECTION DWGS. I-747-E1

MATERIAL REQUIRED FOR (1) TRUSS	
No.	MARK
4	4C1
12	4C2
12	4C3

MARK	NO. PCS.	SIZE	LENGTH		TOTAL LGTH.	TOTAL WGT.
			FT.	INS.		
4C-1	4	L3x3x3/16	12	10 1/2		
4C-2	12	L1 1/2 x 4 x 3/16	3	3 1/2		
4C-3	12	L1 1/2 x 4 x 3/16	2	6 9/16		

11 1/16 HOLES

LEE C. MOORE CORPORATION
PITTSBURGH, PA. • TULSA, OKLA. • DALLAS, TEXAS • WICHITA, KANSAS

(32T33) 3'-0" x 2'-0" STANDARD BOX TRUSS

WESTINGHOUSE ELECTRIC CORPORATION

I-747-4C		REV.
DRWN.	MARCHIONDA	4-14-59
CHKD.	RDM	5-1-59
APPD.		