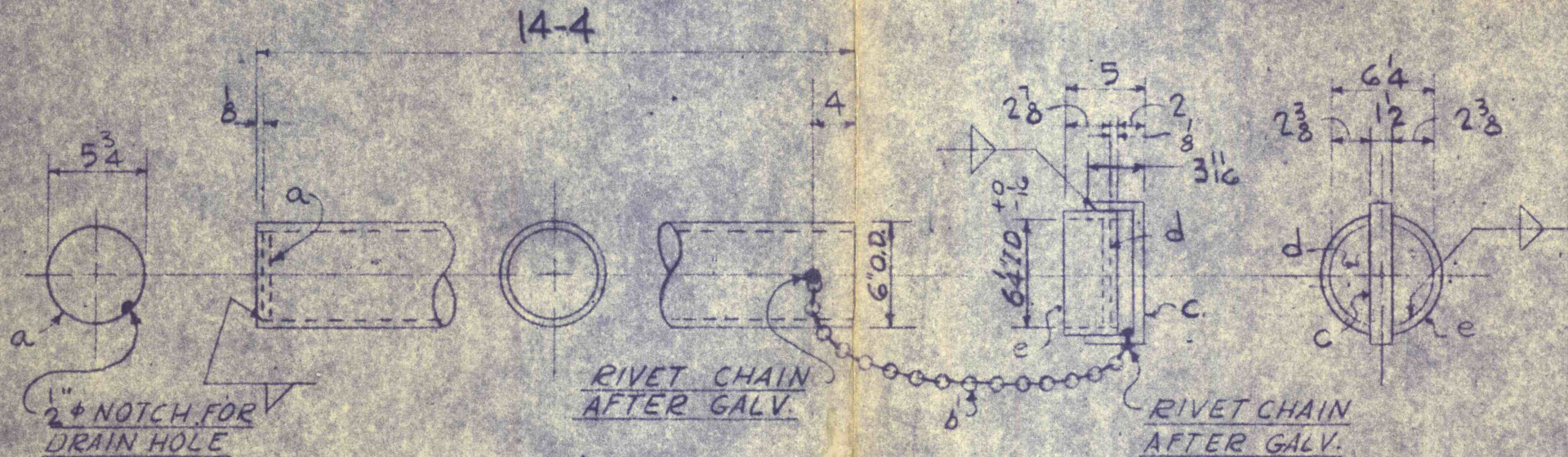


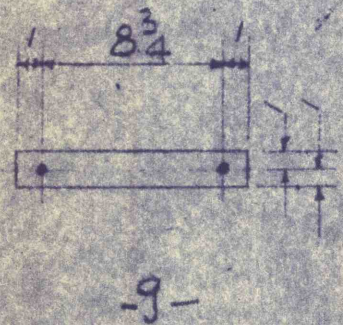
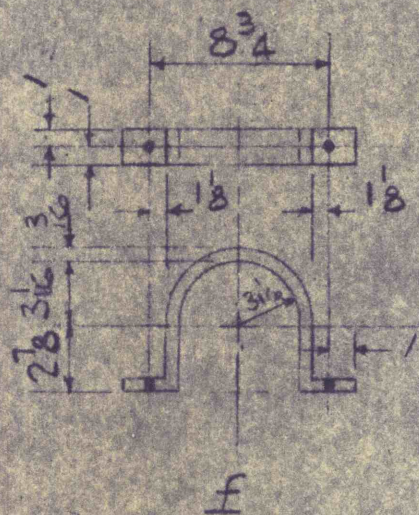
SHIP COMPLETELY ASSEMBLED
WITH COVER, BOLTED CLAMPS, AND 4
BOLTS 4" x 3" INSIDE CONTAINER.



RIVET CHAIN
AFTER GALV.

RIVET CHAIN
AFTER GALV.

LID TO BE FREE FIT
AFTER GALVANIZING



NOTE:
ALL STEEL TO BE GALVANIZED

MARK	NO. PCS.	SIZE	LENGTH		WGT.
			FT.	INS.	
(MATERIAL FOR ONE CONTAINER)					
HC-1	1	HOOKSTICK CONTAINER			
	1	6" O.D. TUBE			
		11 GA.	14	4	
a	1	R 5 3/4 x 1/8	0	5 3/4	
b	1	#50 SASH	1	6	
		CHAIN-GALV.			
	2	3/16" BRASS	0	0 3/8	
		RIVETS			
		LID			
e	1	R 3 x 8"	1	8	(ROLLED)
c	1	R 1 1/2 x 8	1	2	(BENT)
d	1	R 6 1/4 x 8	0	6 1/4	
		STRAPS			
f	2	R 2 x 3/16	1	8	(BENT)
		CLAMPS			
g	2	R 2 x 3/16	0	10 3/4	
		FIELD BOLTS (SHIPPED INSIDE CONTAINER)			
	4	1" GMB	0	3	FULL THD.
	4	1" GMB	0	1	FULL THD.
		5" 1/16" HOLES UNLESS NOTED			

LEE C. MOORE CORPORATION
PITTSBURGH, PA. TULSA, OKLA. DALLAS, TEXAS. WICHITA, KANS.

I-747-2C REV.

HOOKSTICK CONTAINER

DRWN. JRW 4-2-58
CHKD. FC 4-2-58
APPD.