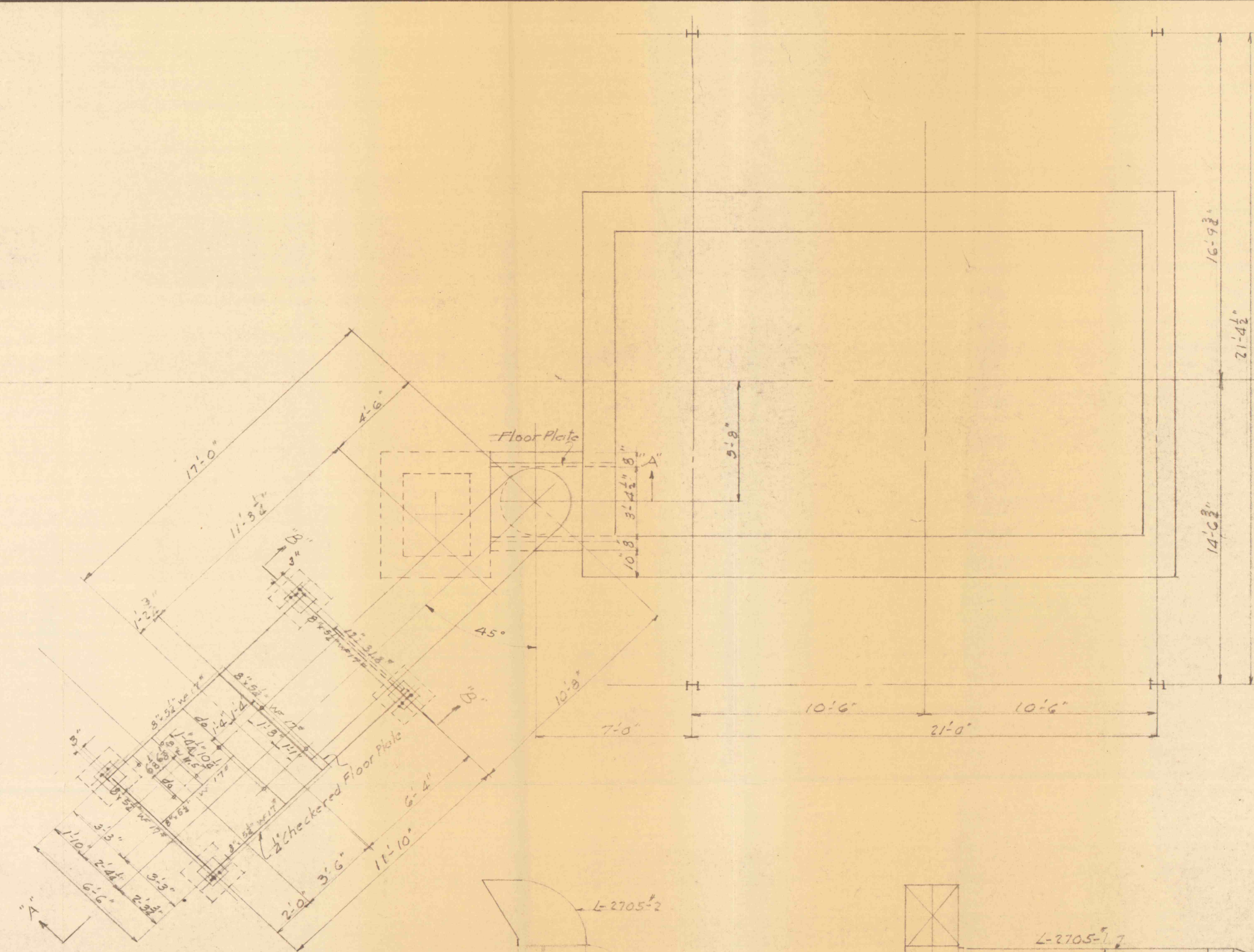
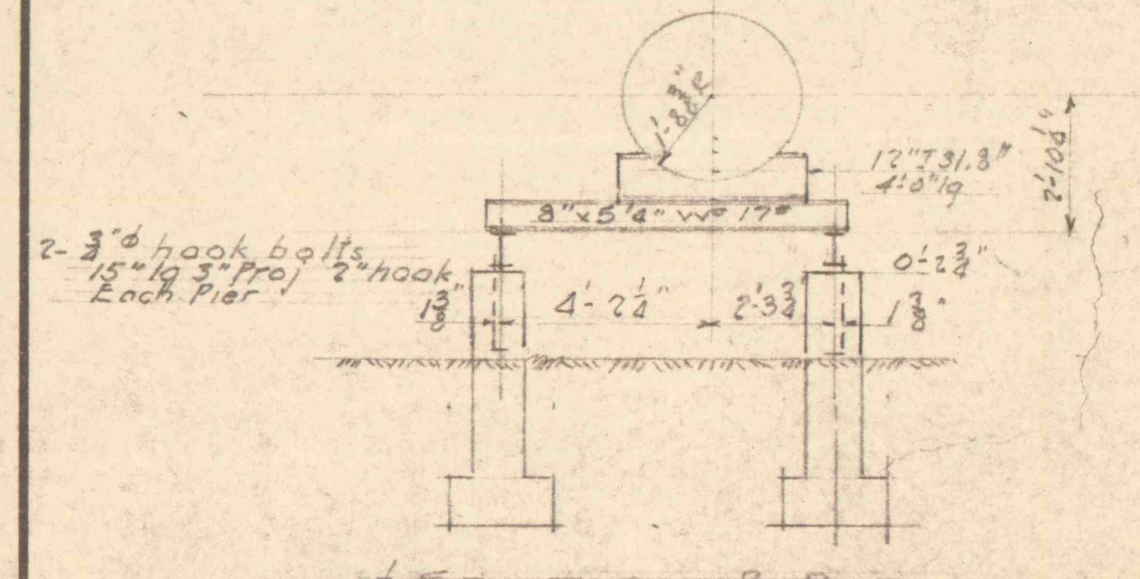
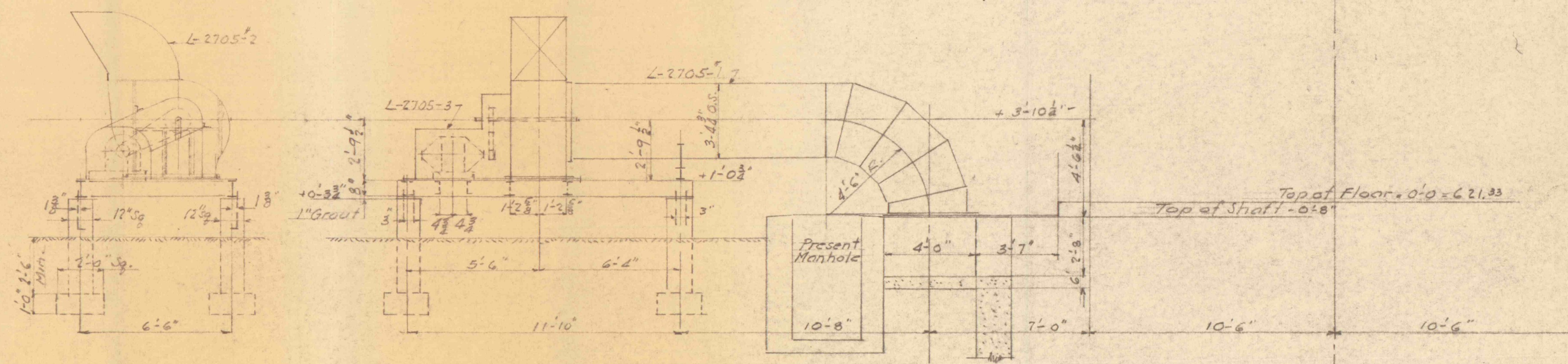


HOIST HOUSE



Fan - Sturtevant Multivane Design #3
 Size #3 - 1200 C.F.M./Min @ 1" W.G. + 343 RPM
 Motor - 15 H.P.G.E. - K6 - 845 C.P.M. - Frame 404
 Motor Sheave - Gates 4 Groove Super 3V. 6" Dia
 bored for 2 1/2" dia. shaft - 2 x 4" k.s.
 Fan Sheave - Gates 4 Groove Super 3V. 14" P. Dia
 bored for 2 1/2" dia. shaft - 2 x 4" k.s.
 Belts 4 - 3V 1000 Super H.C.
 Motor Base Plate Dwg. H4782.



Rev. 5.L.B. 4-21-60 Motor & Dist. of fan & of Motor.
 FLOOD CONTROL PROJ #22 PHASE "B"
 PA DEPT OF MINES & METALLURGICAL INDUSTRIES
 TRUESDALE COLLYERSHAM SHAFT VENT FAN GEN. PLAN

GLEN ALDEN CORPORATION Wilkes-Barre, Pa. CONSTRUCTION ENGINEERS	
APPROVED	DRAWN BY 5.L.B. 2-12-60
Const. Engr. Q.W.C. 4-11-60	TRACED BY
	CHECKED BY
	S2587

For details of Shaft Vent Fan see dwg. L-2705.