

THE EXISTING SHAFT TOWER TO BE RE-USED WITH ALTERATIONS AND ADDITIONS.

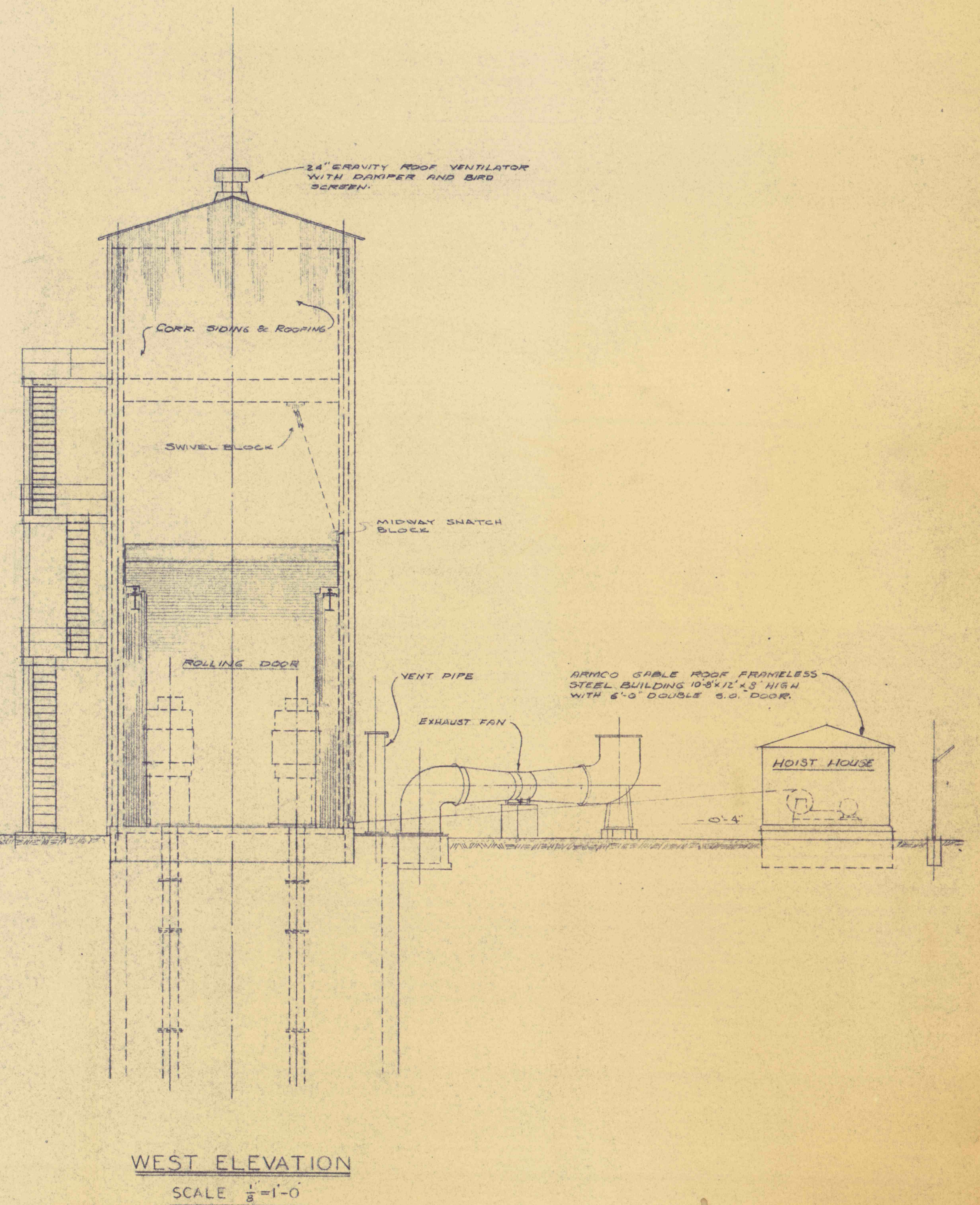
NORTH ELEVATION

SCALE $\frac{1}{8}'' = 1'-0''$

4-12 STAGE VERT TURBINE PUMPS FURNISHED UNDER PHASE 'A' 300 HEAD - 4000 G.P.M. - 14" DIA COLUMN LINE - 5 1/2" DIA. SHAFT - 6" DIA. OIL TUBE. BOTTOM OF SHAFT AND OIL TUBE TO BE STAINLESS STEEL.

MOTORS FURNISHED UNDER PHASE 'A' 1875 H.P. SQUIRREL CAGE INDUCTION 3* 60 - 1350/1160 Y 1150 RPM.

ELECTRICAL SWITCHGEAR FURNISHED UNDER PHASE 'A'



WEST ELEVATION

SCALE $\frac{1}{8}'' = 1'-0''$

ELEVATIONS - GENERAL ARRANGEMENT

REVISIONS	
DEC. 30, 1958	
DEC. 5, 1958	
MAR. 10, 1957	
JULY 13, 1957	
AUG. 7, 1957	
AUG. 26, 1957	

FLOOD CONTROL PROJECT NO 22 PHASE B
PA DEPT OF MINES & MINERAL INDUSTRIES

GLEN ALDEN CORPORATION
TRUESDALE COLL. ASKAM SHAFT

ROUSHEY AND SMITH

SCALE NOTED ENGINEERS AND CONSULTANTS JOB 633
DATE 9-25-58 161 MARKET ST WILKES-BA, PA DWG. No. 3
BY EBB METROPOLITAN WILKES-BARR

