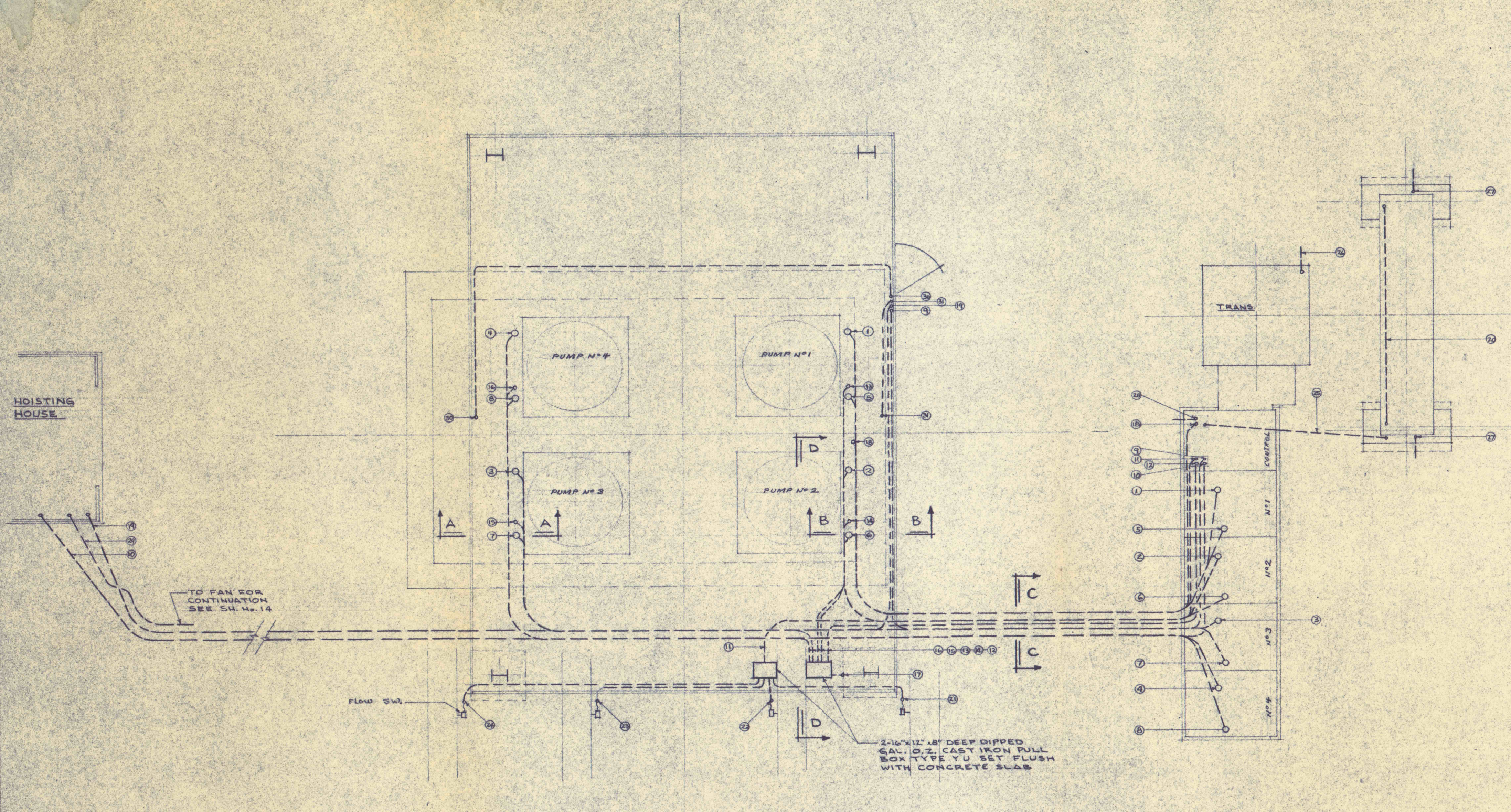
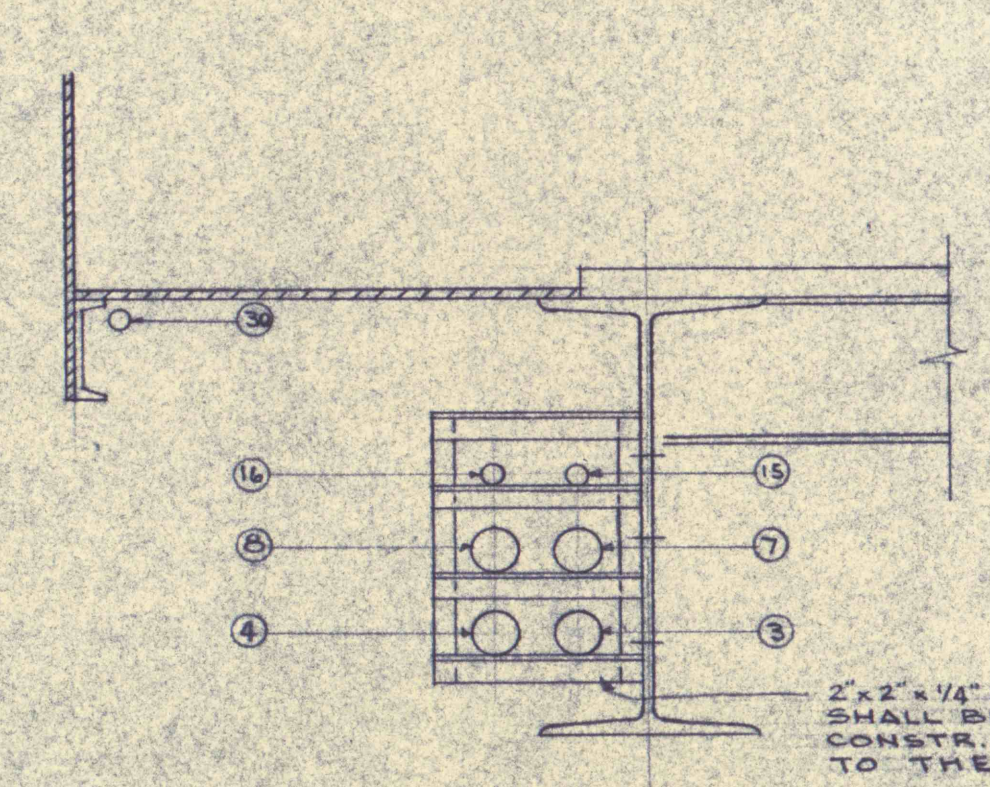
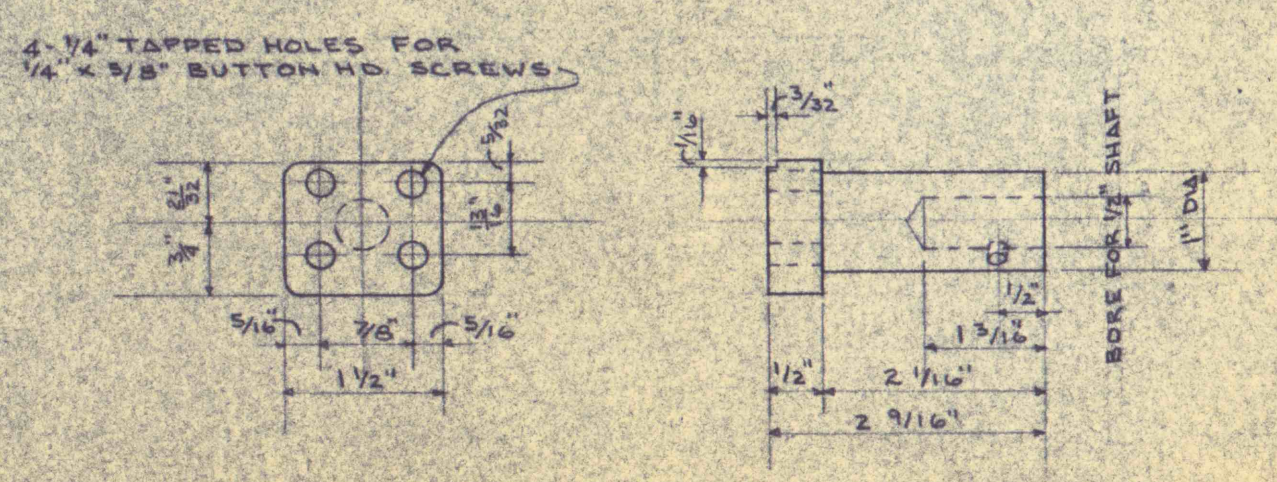
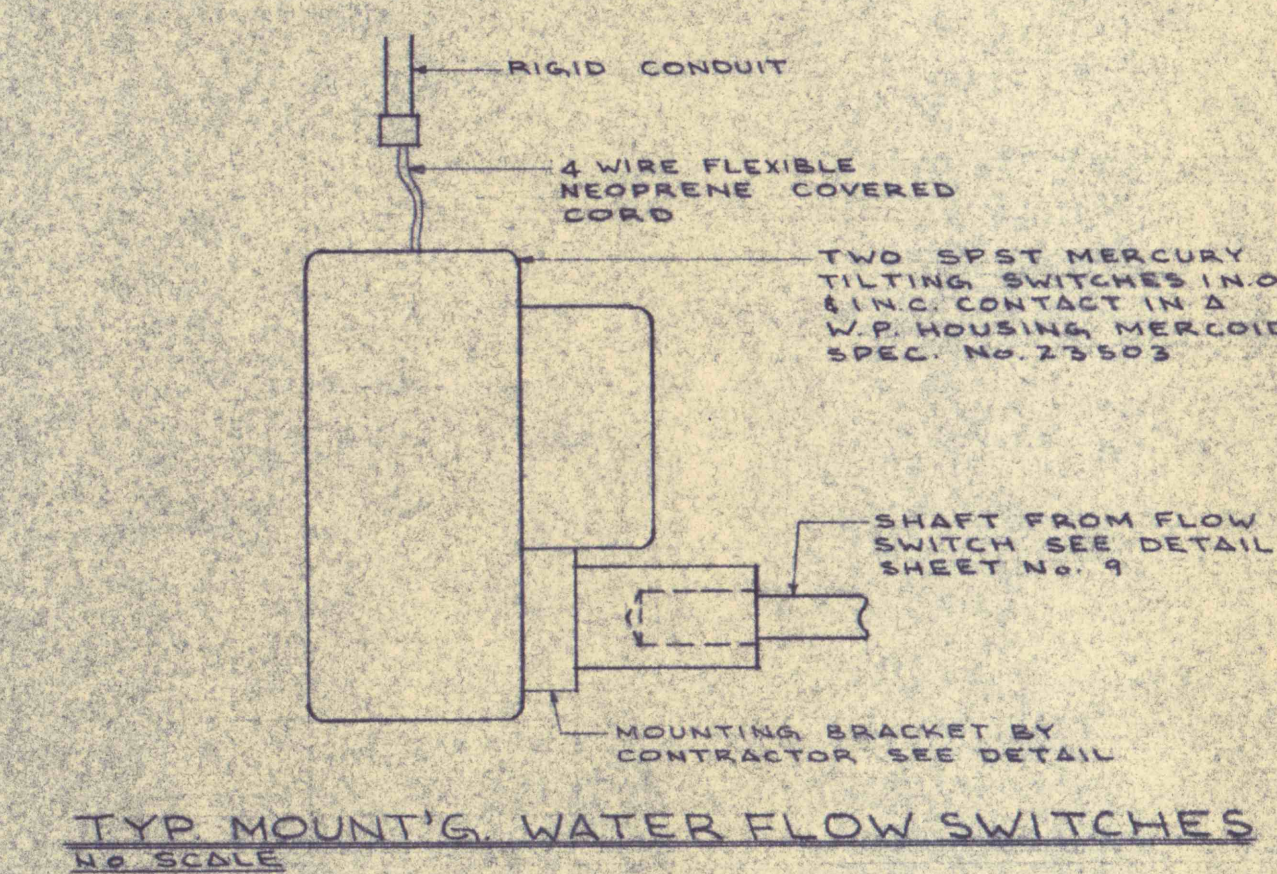


CONDUIT SCHEDULE

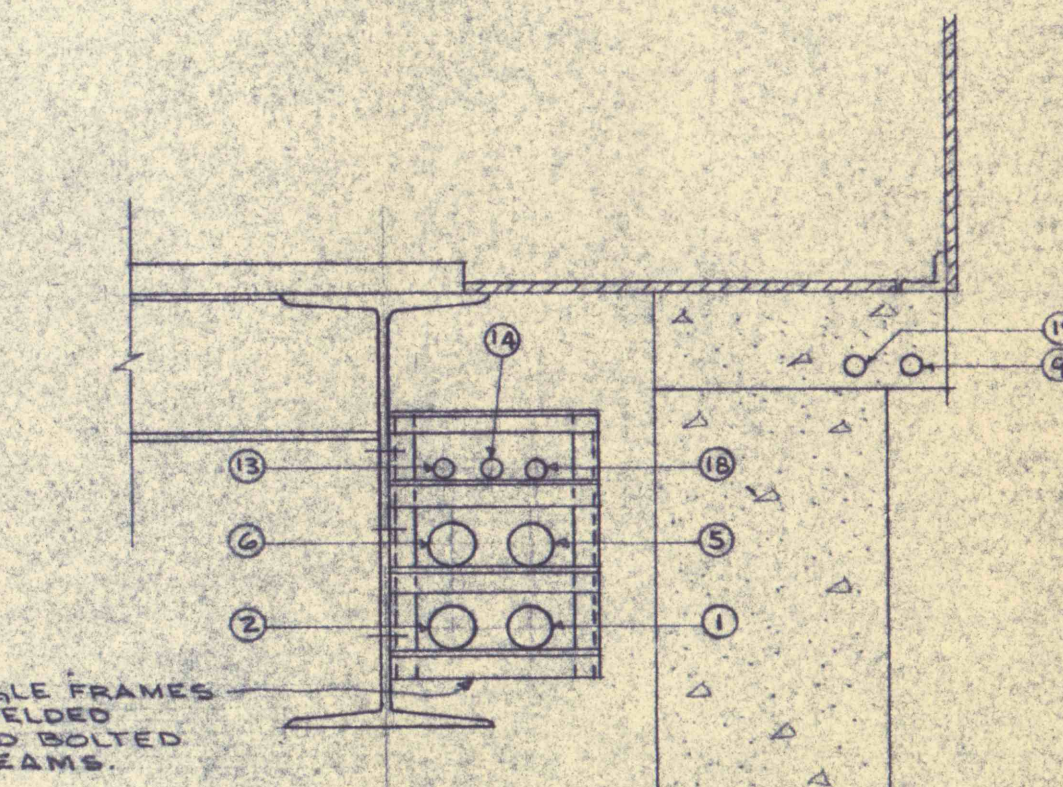
CONDUIT No.	SIZE	FROM	TO	CONDUCTORS	USE
1	4"	STARTER No.1	PUMP No.1	3-300MCM HV	MOTOR FEED
2	4"	STARTER No.2	PUMP No.2	3-300MCM HV	MOTOR FEED
3	4"	STARTER No.3	PUMP No.3	3-300MCM HV	MOTOR FEED
4	4"	STARTER No.4	PUMP No.4	3-300MCM HV	MOTOR FEED
5	4"	STARTER No.1	PUMP No.1	1-1/2 No.12 CABLE 2-2 No.12 CABLE 1-2 No.12 CABLE	PUMP CONTROL OIL PUMP OILER CONTROL
6	4"	STARTER No.2	PUMP No.2	40	40
7	4"	STARTER No.3	PUMP No.3	40	40
8	4"	STARTER No.4	PUMP No.4	40	40
9	2"	CONTROL SEC.	LP-A	4 No.8 2 No.12	LP-A SUB-STATION LTG.
10	2 1/2"	CONTROL SEC.	HOIST HOUSE	3 No.7/0 1-2 No.12 CABLE	HOIST & FAN RELAY CONTROL
11	2"	CONTROL SEC.	JUNCTION BOX	4-4 No.12 CABLE	W.P. SWITCH
12	1 1/2"	CONTROL SEC.	JUNCTION BOX	1 No. 4/0	GROUND
13	1"	JUNCTION BOX	PUMP No.1	1 No. 1/0	GROUND
14	1"	JUNCTION BOX	PUMP No.2	1 No. 1/0	GROUND
15	1"	JUNCTION BOX	PUMP No.3	1 No. 1/0	GROUND
16	1"	JUNCTION BOX	PUMP No.4	1 No. 1/0	GROUND
17	1 1/2"	JUNCTION BOX	COLUMN	1 No. 4/0	GROUND
18	2"	LEVEL CONTROL	CONTROL SEC.		FUTURE
19	1 1/2"	LP-A	HOIST HOUSE	3 No. 8	LOAD CENTER
20	1"	TOWER BASE	TOWER BASE	2 No.12	SUB-STATION LTG.
21	1"	JUNCTION BOX	PUMP DISCH.No.1	1-4 No.12 CABLE	FLOW CONTROL
22	1"	JUNCTION BOX	PUMP DISCH.No.2	1-4 No.12 CABLE	FLOW CONTROL
23	1"	JUNCTION BOX	PUMP DISCH.No.3	1-4 No.12 CABLE	FLOW CONTROL
24	1"	JUNCTION BOX	PUMP DISCH.No.4	1-4 No.12 CABLE	FLOW CONTROL
25	1"	CONTROL SEC.	TOWER BASE	2 No.12	SUB-STATION LTG.
26	1"	TRANSFORMER	STUB THRU BASE	1 No.1/0 BARE	GROUND
27	1"	TOWER	STUB THRU BASE	1 No.1/0 BARE	GROUND
28	1 1/4"	CONTROL SEC.	STUB THRU BASE	1 No. 4/0 BARE	GROUND
29	1"	HOIST HOUSE	FAN	3 No. 8	MOTOR FEED
30	3/4"	LP-A	5 DAY OILER	2 No.12	OILER HTR.
31	3/4"	LP-A	5 DAY OILER	2 No.12	OILER HTR.



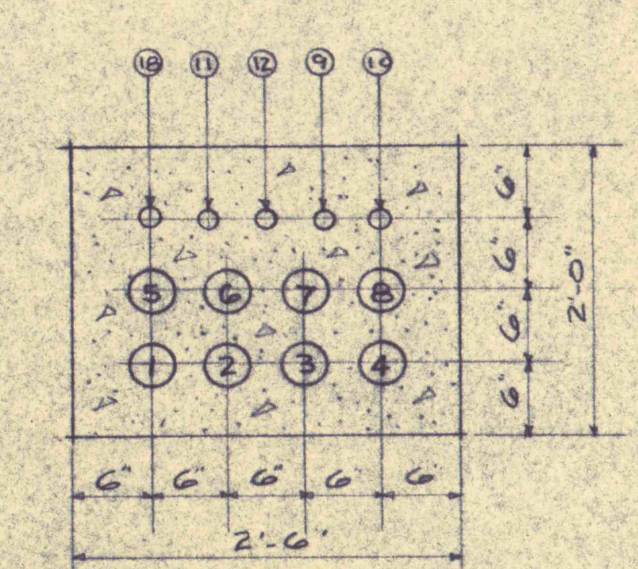
PLAN
SCALE 1/4" = 1'-0"



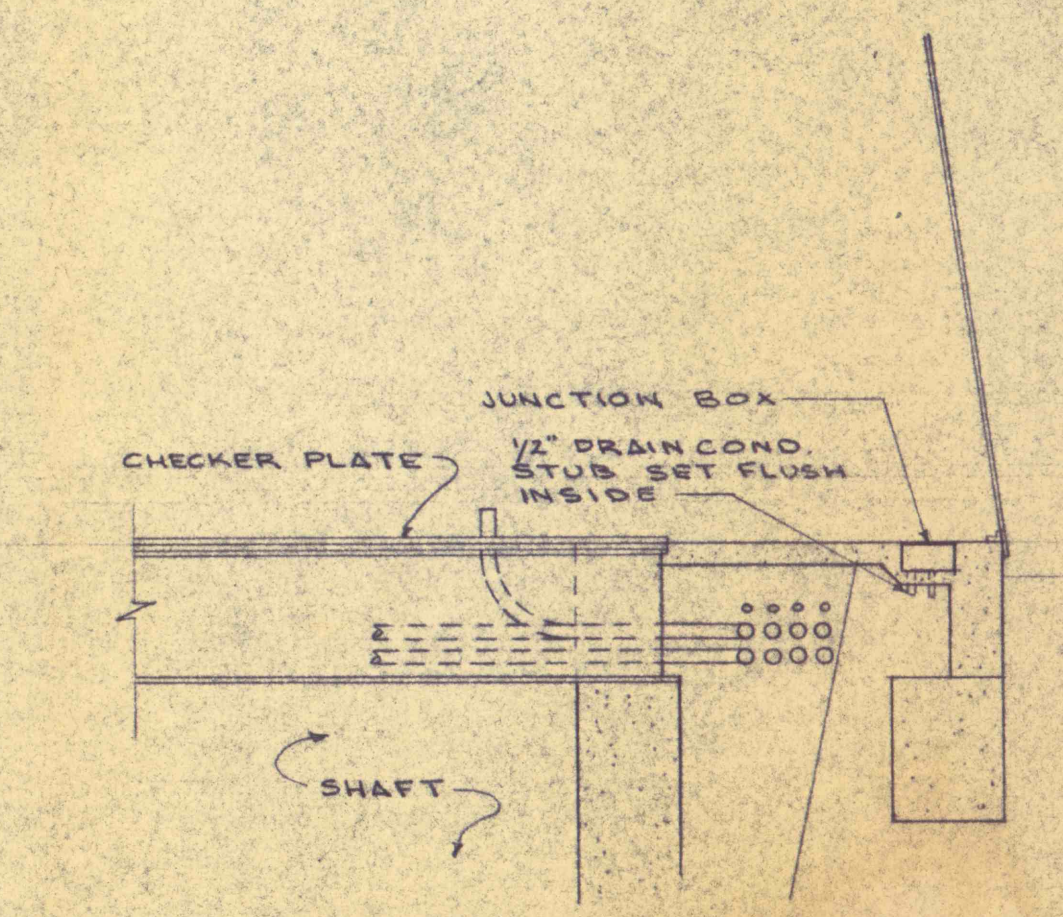
SECTION A-A
SCALE 3/4" = 1'-0"



SECTION B-B
SCALE 3/4" = 1'-0"



SECTION C-C
SCALE 3/4" = 1'-0"



SECTION D-D
SCALE 1/4" = 1'-0"

ELECTRICAL EQUIPMENT-FOUNDATIONS & DETAILS

<p>REVISIONS</p> <p>AUG 7, 1959</p>			<p>FLOOD CONTROL PROJECT NO.22 PHASE B PA DEPT OF MINES & MINERALS INDUSTRIES</p>		
<p>GLEN ALDEN CORPORATION TRUESDALE COLL. ASKAM SHAFT</p>			<p>ROUSHEY AND SMITH</p>		
SCALE NOTED	ENGINEERS AND CONSULTANTS	JOB NO. 633			
DATE 7-13-59	189 MARKET ST. KINGSTON, PA.				
BY: PLR/WAE	METROPOLITAN WILKES-BARRE	DWG. NO. 15			